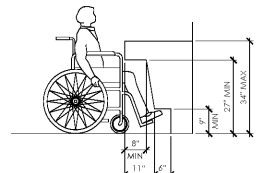
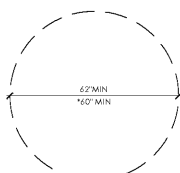


SIZE OF CLEAR FLOOR SPACE

NOTE: CLEAR FLOOR WIDTH AT KNEE AND TOE CLEARANCE SPACE SHALL BE 2'-4" MINIMUM. ADDITIONAL SPACE BEYOND KNEE AND TOE CLEARANCES SHALL BE PERMITTED BENEATH ELEMENTS.

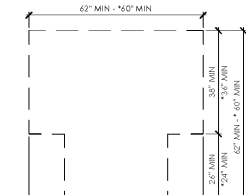


KNEE AND TOE CLEARANCES

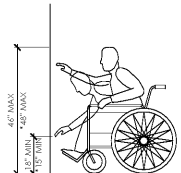


CIRCULAR TURNING SPACE

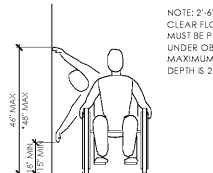
NOTE: AN UNOBSTRUCTED TURNING SPACE SHALL BE IN ALL ACCESSIBLE SPACES. THE CLEAR FLOOR SPACE AT FIXTURES AND CONTROLS. THE ACCESSIBLE ROUTE AND TURNING SPACE MAY OVERLAP.



T-SHAPED TURNING SPACE

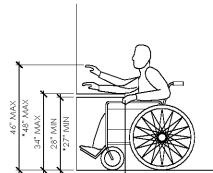


UNOBSTRUCTED FORWARD REACH

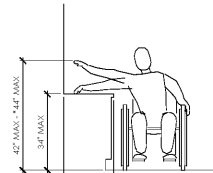


UNOBSTRUCTED SIDE REACH

NOTE: 2'-4" MIN WIDE CLEAR FLOOR SPACE MUST BE PROVIDED UNDER OBSTRUCTION. MAXIMUM REACH DEPTH IS 2'-1".



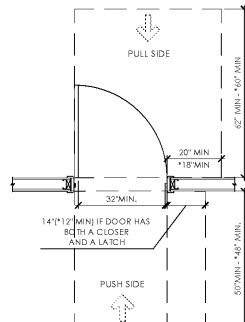
OBSTRUCTED HIGH FORWARD REACH



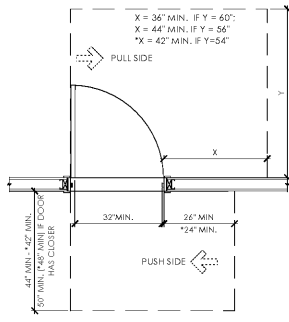
OBSTRUCTED HIGH SIDE REACH

ACCESSIBLE SPACE ALLOWANCE

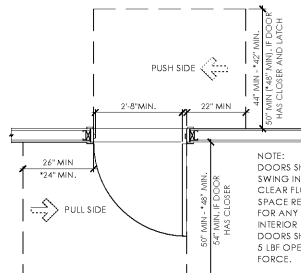
SCALE: 3/8" = 1'-0"



FRONT APPROACH



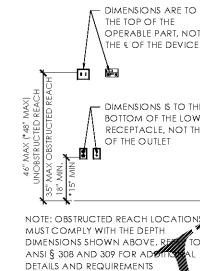
SIDE APPROACHES



NOTE: DOORS SHALL NOT SWING INTO THE CLEAR FLOOR SPACE REQUIRED FOR ANY FIXTURE. INTERIOR HINGED DOORS SHALL HAVE 5 LBF OPENING FORCE.

ACCESSIBLE OUTLETS, SWITCHES, & OPERABLE CONTROLS

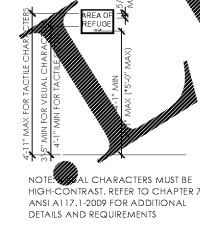
SCALE: 3/8" = 1'-0"



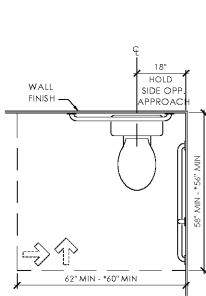
NOTE: OBSTRUCTED REACH LOCATIONS MUST COMPLY WITH THE DEPTH DIMENSIONS SHOWN ABOVE. REFER TO ANSI § 308 AND 309 FOR ADDITIONAL DETAILS AND REQUIREMENTS.

ACCESSIBLE SIGNAGE

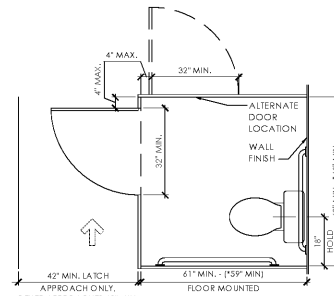
SCALE: 3/8" = 1'-0"



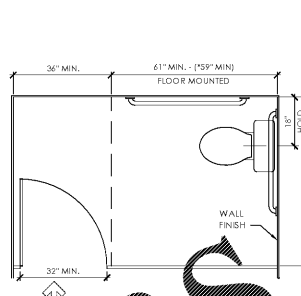
NOTE: TACTILE CHARACTERS MUST BE HIGH-CONTRAST. REFER TO CHAPTER 7 IN ANSI A117.1-2009 FOR ADDITIONAL DETAILS AND REQUIREMENTS.



NO TOILET PARTITIONS



STANDARD STALL

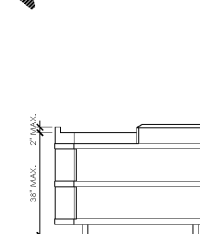


STALL AT END OF ROW

NOTE: WATER CLOSET SHALL BE ON AN ACCESSIBLE ROUTE. WALL MOUNTED WATER CLOSET TO BE MOUNTED 58" FROM FINISH FLOOR TO TOP OF WATER CLOSURE. IF A LOCK MOUNTED WATER CLOSURE IS SHOWN, GRAB BARS AND OTHER TOILET ROOM ACCESSORIES SHALL BE THE SAME AS SHOWN IN ACCESSIBLE TOILET ROOMS.

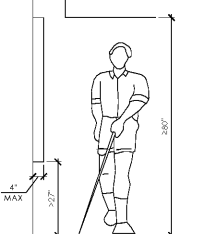
ACCESSIBLE CHECKOUT COUNTER

SCALE: 3/8" = 1'-0"



PROTRUDING OBJECTS

SCALE: 3/8" = 1'-0"

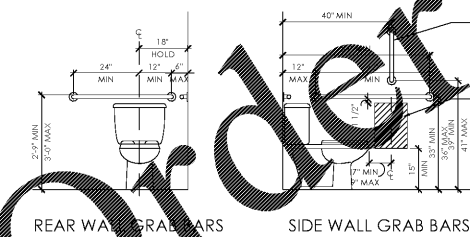


NOTE: HANDRAILS MAY PROTRUDE 4'-1/2" AND DOOR CLOSERS AND DOOR STOPS SHALL BE PERMITTED TO BE 6'-4" A.F.F.

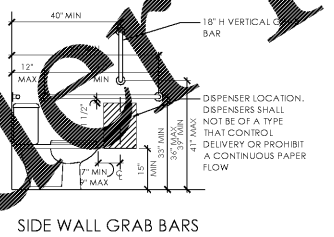
ACCESSIBILITY NOTES

- TURNING SPACE
 - ALL ROOMS SHALL BE SERVICED BY AN ACCESSIBLE ROUTE, AND SHALL PROVIDE A TURNING RADIUS 62" MINIMUM DIAMETER CIRCULAR SPACE OR T-SHAPED SPACE WITH 62" MINIMUM SQUARE, WITH ARMS AND BASE 38" MINIMUM IN WIDTH.
- ACCESSIBLE ROUTES
 - ACCESSIBLE ROUTES SHALL BE 3'-0" WIDE MINIMUM.
- OPERABLE PARTS
 - THE ENTIRE OPERABLE PARTS SHALL FALL WITHIN THE REQUIRED REACH RANGES.
 - OPERABLE PARTS SHALL BE OPERABLE WITH ONE HAND AND SHALL NOT REQUIRE TIGHT GRASPING, PINCHING, OR TWISTING OF THE WRISTS. THE FORCE REQUIRED TO ACTIVATE OPERABLE PARTS SHALL BE 5.0 POUNDS MAXIMUM.
- SIGNAGE
 - REFER TO ANSI §703 FOR COMPLETE SIGNAGE REQUIREMENTS.
 - VISUAL SIGNAGE MUST BE 3'-5" MIN A.F.F. AND LETTERING MUST BE 5/8" MIN AND HIGH-CONTRAST.
 - CHARACTERS IN TACTILE AND BRaille SIGNAGE MUST BE BETWEEN 4'-0" AND 4'-11" A.F.F.
- DOORS AND DOORWAYS
 - PRIMARY ENTRANCES SHALL BE ACCESSIBLE AND LOCATED ON AN ACCESSIBLE ROUTE.
 - A CLEAR OPENING OF 32" SHALL BE PROVIDED.
- TOILET FACILITIES
 - AT LEAST ONE LAVATORY AND ONE WATER CLOSET SHALL MEET ALL ANSI AND 2010 ADA REQUIREMENTS.
 - DOORS SHALL NOT SWING INTO THE CLEAR FLOOR SPACE OR CLEARANCE FOR ANY FIXTURE.
 - EXCEPTION: WHERE A 32" X 50" CLEAR FLOOR SPACE IS PROVIDED WITHIN THE ROOM BEYOND THE SWING OF THE DOOR.
 - CLEAR FLOOR SPACES, CLEARANCES AT FIXTURES AND TURNING SPACES PERMITTED TO OVERLAP.
 - REINFORCEMENT SHALL BE PROVIDED FOR INSTALLATION OF GRAB BARS AND SHOWER SEATS AT WATER CLOSETS, BATHTUBS AND SHOWER COMPARTMENTS AS REQUIRED.
- LAVATORY
 - PROVIDE A 32" X 50" CLEAR FLOOR SPACE POSITIONED FOR FORWARD APPROACH.
 - THE FRONT OF LAVATORIES AND SINKS SHALL BE 33-1/2" MAXIMUM A.F.F. MEASURED TO THE HIGHER OF THE RIM OR COUNTER SURFACE.
 - THE DEPTH OF THE SINK BOWL SHALL BE 6 1/2" MAXIMUM.
 - MULTIPLE-COMPARTMENT SINKS SHALL HAVE AT LEAST ONE COMPARTMENT COMPLYING WITH THIS REQUIREMENT.
 - EXPOSED PIPES AND SURFACES UNDER LAVATORIES AND SINKS SHALL BE INSULATED OR OTHERWISE CONFIGURED TO PROTECT AGAINST CONTACT. THERE SHALL BE NO SHARP OR ABRASIVE SURFACES UNDER LAVATORIES AND SINKS.
- MIRRORS
 - MIRRORS ABOVE LAVATORIES SHALL HAVE THE BOTTOM EDGE OF THE REFLECTING SURFACE 40" MAXIMUM A.F.F.
- WATER CLOSET
 - THE REQUIRED CLEARANCE AROUND THE WATER CLOSET SHALL BE PERMITTED TO OVERLAP THE WATER CLOSET, ASSOCIATED GRAB BARS, PAPER DISPENSERS, COAT HOOKS, SHELVES, ACCESSIBLE ROUTES, CLEAR FLOOR SPACE REQUIRED AT OTHER FIXTURES AND THE WHEELCHAIR TURNING SPACE. NO OTHER FIXTURES OR OBSTRUCTIONS SHALL BE LOCATED WITHIN THE REQUIRED WATER CLOSET CLEARANCE.
 - THE TOP OF THE WATER CLOSET SEAT SHALL BE 15" MINIMUM AND 19" MAXIMUM A.F.F.
 - A WALL CAPABLE OF SUPPORTING GRAB BARS IN WEIGHT AND DIMENSION MUST BE PROVIDED AT THE SIDE OF THE WATER CLOSET, 18" FROM THE CL OF THE WATER CLOSET TO FINISHED WALL SURFACE. SWING-DOWN GRAB BARS ARE NOT PERMITTED.
- SINK
 - PROVIDE A 32" X 50" CLEAR FLOOR AREA POSITIONED FOR FORWARD APPROACH. THE CLEAR FLOOR SPACE SHALL BE CENTERED ON THE SINK BOWL.
 - THE REQUIREMENT FOR KNEE AND TOE CLEARANCE SHALL NOT APPLY TO MORE THAN ONE BOWL OF A MULTI-BOWL SINK.
 - THE FRONT OF LAVATORIES AND SINKS SHALL BE 33-1/2" MAXIMUM A.F.F. MEASURED TO THE HIGHER OF THE RIM OR COUNTER SURFACE.
 - THE DEPTH OF THE SINK BOWL SHALL BE 6 1/2" MAXIMUM.
 - MULTIPLE-COMPARTMENT SINKS SHALL HAVE AT LEAST ONE COMPARTMENT COMPLYING WITH THIS REQUIREMENT.
 - ALL EXPOSED PIPES AND SURFACES UNDER LAVATORIES AND SINKS SHALL BE INSULATED OR OTHERWISE CONFIGURED TO PROTECT AGAINST CONTACT AND THERE SHALL BE NO SHARP OR ABRASIVE SURFACES UNDER LAVATORIES AND SINKS.
- CHECKOUT COUNTERS AND AISLES
 - PROVIDE CHECKOUT AISLES THAT COMPLY WITH ANSI 904.4. MINIMUM WIDTH OF 36".
 - CHECKOUT COUNTER SURFACE SHALL BE 38" A.F.F. MAX. TOP OF COUNTER EDGE PROTECTION SHALL BE 2" MAX ABOVE THE COUNTER SURFACE ON THE AISLE SIDE OF THE CHECKOUT COUNTER.

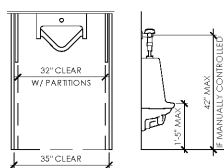
NOTE: WHERE TWO DIMENSIONS ARE SHOWN - FIRST DIMENSION(S) SHOWN ARE SUGGESTED DIMENSION TOLERANCES BEYOND THE REQUIREMENTS SET FORTH IN ANSI A117.1; SECOND DIMENSION(S) PRECEDED BY AN * REFERS TO ANSI A117.1 REQUIREMENTS



REAR WALL GRAB BARS



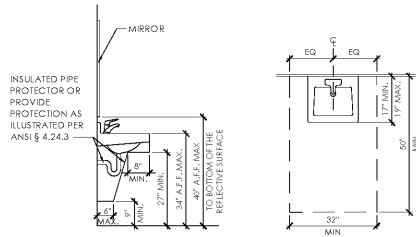
SIDE WALL GRAB BARS



ACCESSIBLE URINAL

SCALE: 3/8" = 1'-0"

- FLUSH CONTROLS SHALL BE AUTOMATIC OR HAND CONTROLLED. IF HAND CONTROLLED, THEY SHALL BE WITHIN APPLICABLE REACH RANGES.
- PARTITIONS MORE THAN 24" DEEP CONSTITUTE AN ALCOVE.



ACCESSIBLE LAVATORY/SINK AND MIRROR

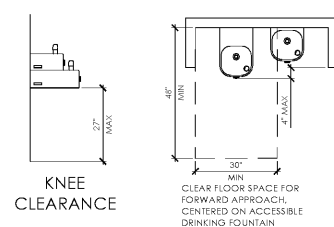
SCALE: 3/8" = 1'-0"



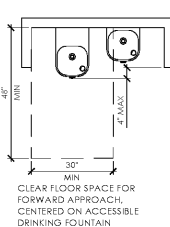
SPOUT HEIGHTS

ACCESSIBLE DRINKING FOUNTAIN

SCALE: 3/8" = 1'-0"



KNEE CLEARANCE



CLEAR FLOOR SPACE FOR FORWARD APPROACH, CENTERED ON ACCESSIBLE DRINKING FOUNTAIN

ACCESSIBLE WATER CLOSET - ELEVATION

SCALE: 3/8" = 1'-0"

Issued:	Date:
A Permit Set	12/05/17
B Client Review Set	05/03/18
C Bid Set	05/11/18
D	
Revisions:	Date:
1	
2	
3	
4	
5	
6	
7	
8	
9	

DO NOT SCALE PLANS
Copying, Printing, Software and other processes required to produce these prints can stretch or shrink the actual paper or layout. Therefore, scaling of this drawing may be inaccurate. Contact me consultants with any need for additional dimensions or clarifications.

ms consultants, inc.
engineers, architects, planners
920 Main Campus Drive
Suite 430
Raleigh, NC 27606-5213
phone 919.772.5565
fax 919.779.2308

DRAWN BY: MEM/KNW
REVIEWED BY: JAB

Seal

ALDI Inc.
1985 Old Union Church Road
Salisbury, NC 28146
704 942-8222
(704) 642-0278 fax

ALDI Inc. Store #: 65
Charlotte, NC
6113 Idlewild Road
Charlotte, NC 28212
Mecklenburg County
Project Name & Location:

Accessibility Standards	Drawing Name:
Prototype Rls. 09/07/17	Project No. 40452-13
Type: LHSD-V8	
Scale: As Noted	Drawing No. G-005