

ELECTRICAL PANEL SCHEDULES

CKT. #	DESCRIPTION	NOTE	BREAKER POLE	AMP.	LOAD (KVA)	A	B	C	LOAD (KVA)	BREAKER POLE	NOTE	DESCRIPTION	CKT. #	
1	RTU-2 FLA: 82.0 MCA: 83.0		4	3	9.84	10.7			0.89	20	1	FRONT STORE LIGHTS	2	
2	#2, #8 G. 1in (1) 1-1/4" C. EA				9.84	10.4			0.32	20	1	BACK STORE LIGHTS	4	
3	WIRE				9.84	10.3			0.63	20	1	STORE LIGHTS	5	
7	PREP RM RECEPT.		1	1	20	0.0				20	1	STORE LIGHTS	8	
9	COMPUTER RECEPT.		1	1	20	0.0				20	1	PADDLE FANS	10	
11	OFFICE RECEPT.		1	1	20	0.0				20	1	STORE LIGHTS	12	
13	HAND DRYER		1	1	20	1.50	9.5		8.00	90	3	WATER HEATER	14	
15	HAND DRYER		1	1	20	1.50	9.5		8.00	90	3	WATER HEATER	16	
17	WATER RECEPT.		1	1	20	0.0				20	1	EXISTING TO REMAIN	18	
19	STORE LIGHTS		1	1	20	1.2			1.20	20	1	1.6	BUILDING SIGN	20
21	HALL PACKS		1	1	20	0.0				20	1	1	AIR	22
23	BUILDING SIGNS		1	1	20	1.2			1.2	20	1	1	ROOF TOP RECEPT.	24
25	CHECKOUT RECEPT.		1	1	20	0.0				20	1	1	3-DOOR FREEZER	26
27	CHECKOUT RECEPT.		1	1	20	0.0				20	1	1	CHECKOUT LIGHTS	28
29	LOTTERY		1	1	20	0.0				20	1	1	SOFFIT RECEPT.	30
31	UNKNOWN		1	1	20	0.0				20	2	1	SLUSHY MACHINE	32
33	SOFFIT RECEPT.		1	1	20	0.0				20	1	1	EXISTING TO REMAIN	34
35	SOFFIT RECEPT.		1	1	20	0.0				20	1	1	UNKNOWN	36
37	CHUCKLES		1	1	20	0.5			0.50	20	1	1	RESTROOM/OFFICE LIGHTS/RK EF	38
39	UNKNOWN		1	1	20	0.0				20	1	1	RECEPT.	40
41	UNKNOWN		1	1	20	0.0				20	1	1	RECEPT.	42
					22.0	19.9	19.7	TOTAL KVA PER PHASE						
					61	55	55	AMPS PER PHASE						

VOLTAGE 208Y/120V
PHASE 3
WIRE 4
MAINS 200 MCB
RATING 200 (AMPS)
WITH I.G. BAR NO

LOCATION SEE PLAN
MOUNTING SEE RISER
FEEDER SEE "MDP"
MIN AIC 22k

ITEMS CON. % DEM.
RECEPTACLES 0.0 code 0.0
KITCHEN 0.0 65% 0.0
HVAC 29.5 100% 29.5
LIGHTS (INT.) 2.6 125% 3.2
LIGHTS (EXT.) 2.4 125% 3.0
MISC. 27.0 100% 27.0
TOTAL KVA 61.5
TOTAL AMPS 171

NOTES:
1) EXISTING TO REMAIN
2) E.C. SHALL RELOCATE BREAKER AND CIRCUIT TO ALLOW SPACE FOR NEW WATER HEATER BREAKER INSTALLATION.
3) E.C. SHALL VERIFY EXISTING PANEL LOAD AND VERIFY THAT THE NEW WATER HEATER LOAD DOES NOT OVERLOAD THE EXISTING PANEL.
4) PROVIDE HACR TYPE BREAKER.
5) PROVIDE LOCKABLE MEANS PER NEC 422.31
6) PROVIDE LOCKABLE MEANS PER NEC 600.6

CKT. #	DESCRIPTION	NOTE	BREAKER POLE	AMP.	LOAD (KVA)	A	B	C	LOAD (KVA)	BREAKER POLE	NOTE	DESCRIPTION	CKT. #	
1	SPARE		1	20	0.0					20	1	1	COOLER FANS	2
3	SPARE		1	20	0.0					20	1	1	COOLER LIGHTS	4
5	SPARE		1	20	0.0					20	1	1	HEATER	6
7	RTU-1 FLA: 94.0 MCA: 95.0		2	3	100	11.28	11.3			20	3	1	COOLER COMP.	8
8	#1, #8 G. 1in (1) 1-1/2" C. EA				11.28	11.3				20	3	1	COOLER COMP.	10
11	WIRE				11.28					20	3	1	COOLER COMP.	12
13	DINING RECEPTACLES		1	1	20	0.90	0.9			20	1	1	BEVERAGE COUNTER	14
15	HAND DRYER		1	1	20	1.5			1.5	20	1	1	BEVERAGE COUNTER	16
17	HAND DRYER		1	1	20	1.5			1.5	20	1	1	BEVERAGE COUNTER	18
19	SPARE		1	1	20	0.0				20	1	1	BEVERAGE COUNTER	20
21	SPARE		1	1	20	0.0				20	1	1	BEVERAGE COUNTER	22
23	SPARE		1	1	20	0.0				20	1	1	BEVERAGE COUNTER	24
25	SPARE		1	1	20	0.0				20	1	1	BUILDING SIGNS	26
27	D/T MENU BOARD		1	1	20	1.2			1.2	20	1	1	ICE MERCHANDISER	28
29	D/T PREVIEW BOARD		1	1	20	1.2			1.2	20	1	1	ICE BOOTH	30
31	D/T MENU CANOPY		1	1	20	1.2			1.2	20	2	1	SPACE	32
33	AIR-VAC		1	1	20	0.0				20	1	1	GENERATOR HEATER	34
35	NEW COUNTER		1	1	20	0.0				20	1	1	UNKNOWN	36
37	NEW COUNTER		1	1	20	0.0				20	1	1	SPACE	38
39	NEW COUNTER		1	1	20	0.0				20	1	1	SPACE	40
41	NEW COUNTER		1	1	20	0.0				20	1	1	SPACE	42
					13.4	14.0	14.0	TOTAL KVA PER PHASE						
					37	39	39	AMPS PER PHASE						

VOLTAGE 208Y/120V
PHASE 3
WIRE 4
MAINS 200 MCB
RATING 200 (AMPS)
WITH I.G. BAR NO

LOCATION SEE PLAN
MOUNTING SEE RISER
FEEDER SEE "MDP"
MIN AIC 22k

ITEMS CON. % DEM.
RECEPTACLES 0.0 code 0.0
KITCHEN 0.0 65% 0.0
HVAC 33.8 100% 33.8
LIGHTS (INT.) 0.0 125% 0.0
LIGHTS (EXT.) 2.5 100% 2.5
MISC. 11.3 100% 11.3
TOTAL KVA 47.3
TOTAL AMPS 115

NOTES:
1) EXISTING TO REMAIN
2) PROVIDE HACR TYPE BREAKER
3) PROVIDE LOCKABLE MEANS PER NEC 422.31

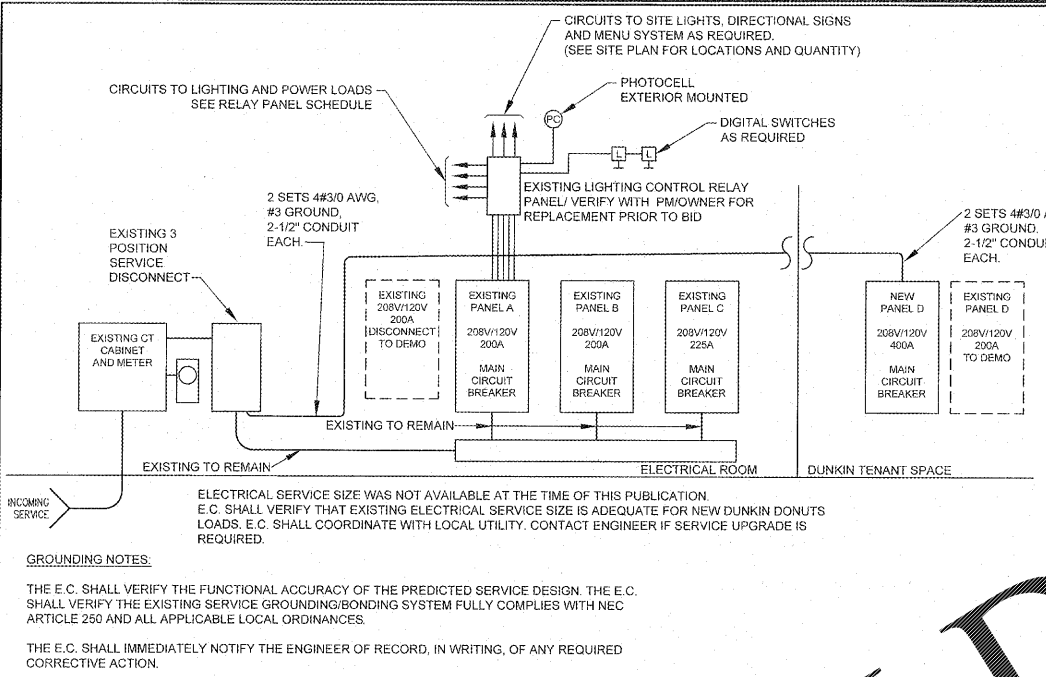
CKT. #	DESCRIPTION	NOTE	BREAKER POLE	AMP.	LOAD (KVA)	A	B	C	LOAD (KVA)	BREAKER POLE	NOTE	DESCRIPTION	CKT. #	
1	NO LEAD STP		1	2	20	0.0				15	1	1	ENL	2
3	SUPER STP		1	2	20	0.0				20	2	1	CANOPY	4
5	DISP. 2 & 4		1	1	15	0.0				15	1	1	DISP. 1 & 2	6
7	CANOPY		1	2	20	0.0				20	2	1	CANOPY	8
9	DISP. 7 & 8		1	1	15	0.0				15	1	1	DISP. 5 & 6	10
11	CANOPY		1	2	20	0.0				20	2	1	CANOPY	12
13	SPACE		1	1	15	0.0				15	1	1	SPACE	14
15	SPACE		1	2	20	0.0				20	2	1	SPACE	16
17	SPACE		1	1	15	0.0				15	1	1	SPACE	18
19	SPACE		1	1	15	0.0				15	1	1	DATA DIST.	20
21	SPACE		1	1	15	0.0				15	1	1	AIR STAND	22
23	CANOPY FASCIA		1	1	20	0.0				20	1	1	ENTRY/EXIT	24
25	CANOPY LOGO		1	1	20	0.0				20	1	1	CODE POLE	26
27	CANOPY FASCIA		1	1	20	0.0				20	1	1	SPACE	28
29	CANOPY FASCIA		1	1	20	0.0				20	1	1	SPACE	30
31	SPACE		1	1	20	0.0				20	2	1	PERIMETER LIGHTS	32
33	PERIMETER LIGHTS		1	1	15	0.0				15	1	1	RELAY SWITCH	34
35	PERIMETER LIGHTS		1	2	30	0.0				15	1	1	SITE/CONSOLE	36
37	PERIMETER LIGHTS		1	2	30	0.0				15	1	1	RELAY SWITCH	38
39	PERIMETER LIGHTS		1	2	30	0.0				15	1	1	RELAY SWITCH	40
41	PERIMETER LIGHTS		1	2	30	0.0				15	1	1	RELAY SWITCH	42
					0.0	0.0	0.0	TOTAL KVA PER PHASE						
					0	0	0	AMPS PER PHASE						

VOLTAGE 208Y/120V
PHASE 3
WIRE 4
MAINS 225 MCB
RATING 225 (AMPS)
WITH I.G. BAR NO

LOCATION SEE PLAN
MOUNTING SEE RISER
FEEDER SEE "MDP"
MIN AIC 22k

ITEMS CON. % DEM.
RECEPTACLES 0.0 code 0.0
KITCHEN 0.0 65% 0.0
HVAC 0.0 100% 0.0
LIGHTS (INT.) 0.0 100% 0.0
LIGHTS (EXT.) 0.0 100% 0.0
MISC. 11.2 100% 11.2
TOTAL KVA 11.2
TOTAL AMPS 32

NOTES:
1) EXISTING TO REMAIN



CKT. #	DESCRIPTION	NOTE	BREAKER POLE	AMP.	LOAD (KVA)	A	B	C	LOAD (KVA)	BREAKER POLE	NOTE	DESCRIPTION	CKT. #	
1	MOBILE DONUT CASE #10.5B (3)		3	1	20	0.07	1.1			20	3	1	MOBILE DONUT CASE #215	2
3	ESPRESSO MACHINE #96.3		2	30	2.50	5.5			3.00	30	2	1	ESPRESSO MACHINE #215	4
5	#10, #10 G. 1in (1) 3/4" C. EA				2.50				3.00	30	2	1	ESPRESSO MACHINE #215	6
7	ESPRESSO MACHINE #96.3		2	30	2.50	5.5			3.00	30	2	1	ESPRESSO MACHINE #215	8
9	#10, #10 G. 1in (1) 3/4" C. EA				2.50	3.6			1.20	1	1	1	COOK TOP #242.2	10
11	BAKERY DISPENSER #101C (2)		3	1	20	0.48			2.0	2	3	2	BAGEL TOASTER #244A	12
13	SUGAR DISPENSER #101D (2)		3	1	20	0.96	3.4		2.4	2	3	2	#10 G. 1in (1) 3/4" C. EA	14
15	COFFEE GRINDER #101Q-3		3	1	20	1.32			1.80	20	1	3	ROASTING UNIT #246A	16
17	COFFEE GRINDER #101Q-3		3	1	20	1.32			1.80	20	1	3	ASSEMBLY STATION #247	18
19	TWIN CARAFE BREWER #101P-3		2	2	50	3.4	4.5		4.6	2	4	2	ICE MAKER #413	20
21	#8, #10 G. 1in (1) 1" C. EA				3.46				4.5	1	1	3	2412, #12 G. 1in (1) 3/4" C. EA	22
23	TWIN CARAFE BREWER #101P-3		2	2	50	3.46	4.5		4.6	2	4	2	3-DOOR REFRIG. #445	24
25	#8, #10 G. 1in (1) 1" C. EA				3.46	8.3			4.99	3	3	3	HYDROCOCTION OVEN #530-B	26
27	SINGLE CARAFE BREWER #101PP-3		2	30	1.73				4.99	60	3	3	344, #10 G. 1in (1) 1-1/4" C. EA	28
29	#10, #10 G. 1in (1) 3/4" C. EA				1.73				4.99	60	3	3	HYDROCOCTION OVEN #539-B	30
31	HOT WATER BEV. MACHINE #10B-A1		30	2	26	7.2			4.99	60	3	3	344, #10 G. 1in (1) 1-1/4" C. EA	32
33	#10, #10 G. 1in (1) 3/4" C. EA				2.26	7.2			4.99	60	3	3	344, #10 G. 1in (1) 1-1/4" C. EA	34
35	BLENDER WITH RINSE #116		30	2	24	7.2			4.99	60	3	3	344, #10 G. 1in (1) 1-1/4" C. EA	36
37	SPARE		1	20	0.0	1.7			1.20	20	1	1	MOBILE PICK-UP SIGN #855E	38