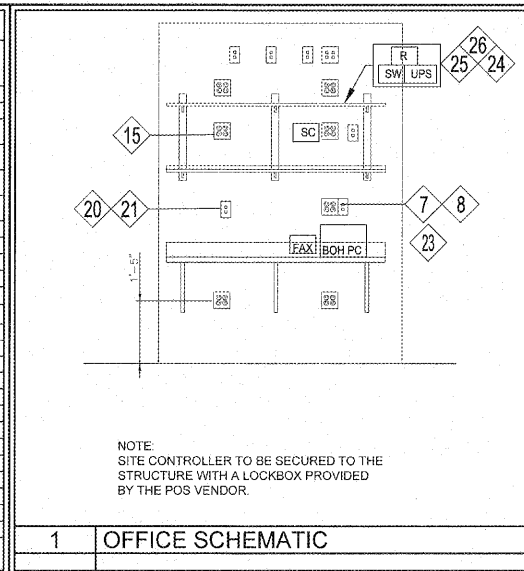


KEY NOYE #	QTY	DESCRIPTION	LOCATION	VOLT	AMPS	TRANSFORMER	LOW VOLT TERM	EXCLUSIONS/NOTES
<b>POS EQUIPMENT</b>								
1	4	POINT OF SALES TERMINAL (POS)	(2)DD FRONT COUNTER,(1)OT (1)OT	120V	0			
2	3	RECEIPT PRINTER	(2)DD FRONT COUNTER, (1) OT	120V	2.0	YES	RJ45	
3	6	PREP PRINTER	(1) ESPRESSO STATION, (1) DUNKIN SANDWICH STATION	240V	1.2	YES	RJ45	
4	6	VDU	(2)DT EXPO STATION, (2) DUNKIN SANDWICH STATION (1) COFFEE STATION, (1) SERVICE AREA	100-240V	1.5	NO	N/A	
6	6	VDU CONTROLLER (PC BASED)	(2)DT EXPO STATION, (2) DUNKIN SANDWICH STATION (1) COFFEE STATION, (1) SERVICE AREA	100-120V	1.0	YES	RJ45	
6	1	POS NETWORK HUB/SWITCH	POS COUNTER/ PREP AREA	100-120V	0.5	YES	RJ45	
7	1	PC SITE CONTROLLER	OFFICE	100-120V	4.0	NO	RJ45	
8	1	PRINTER / FAX / COPIER	OFFICE	100-120V	8.2	NO	N/A	
9	3	SCANNER	(2)DD FRONT COUNTER (1)			NO	RJ45	CONNECTED TO POS UNITS
10	1	PRICE CONFIRMATION DISPLAY	NOT OUTSIDE AT WINDOW			NO	RJ45	CONNECTED TO DT POS UNIT
12	3	CASH DRAWER	UNDER ALL POS ST.	N/A	N/A	N/A	RJ45	DT ORDER TAKER DOES NOT SET CASH DRAWER DT CASH DRAWER ON TOP OF COUNTER, AUTOMATIC COIN CHANGER IS OPTIONAL.
<b>OTHER COMMUNICATIONS DEVICES</b>								
15	1	DRIVE THROUGH ORDER CONSOLE		120V	?	NO	RS232	MUST BE WITHIN 60FT OF DISPLAY
16	0	SPARE						
<b>PHONE / DATA</b>								
18	0	SPARE						
19	0	SPARE						
20	1	FAX LINE	OFFICE	LOW VOLT	N/A	N/A	RJ45	FAX LINE FOR OFFICE
21	1	PHONE	OFFICE	LOW VOLT	N/A	N/A	RJ45	PHONE LINE FOR OFFICE
22	0	SPARE						
23	1	HIGH SPEED INTERNET (MNS)	OFFICE	LOW VOLT	N/A	N/A	RJ45	FOR SITE CONTROLLER & BOH PC
24	1	MARCH SYSTEMS SECURITY	SECURITY SYSTEM	LOW VOLT	N/A	N/A	RJ45	FOR MARCH SYSTEMS. PLUGS INTO MNS ROUTER PORT #2
25	1	OFFICE M/B SOFFIT		LOW VOLT	N/A	N/A	RJ45	BY VENDOR. PLUGS INTO MNS ROUTER PORT #4
26	1	BRAND APPROVED WIFI	OFFICE	LOW VOLT	N/A	N/A	RJ45	BY VENDOR. PLUGS INTO MNS ROUTER PORT #6
1	1	DSL/CABLE	OFFICE	LOW VOLT	N/A	N/A	RJ45	FOR NON-MNS SUPPORTED APPLICATIONS (ATM, MUSIC, NON-MARCH SURVEILLANCE, ETC.)



1 OFFICE SCHEMATIC

NOTE: DRAWINGS ARE NOT TO SCALE IF SHEET IS PLOTTED ON 11" x 17"

Order Plans @ www.LDILine.com

THESE PLANS ARE CONFIDENTIAL PROPERTY OF DUNKIN' BRANDS, INC., UNDER RESTRICTED ACCESS.

**Dunkin' Brands**

PROJECT NO.: 17229

**NRD** national restaurant designers  
**ARCHITECTS & ENGINEERS**

3005 Carrington Mill Blvd., Morrisville, NC 27560  
ph: 919 544 7251 fax: 919 544 9399  
A Division of LMH Associates

REGISTERED PROFESSIONAL ENGINEER  
COMMONWEALTH OF VIRGINIA  
REG. NO. 42852  
EXPIRES 12/31/2008

NO DESCRIPTION	DATE	DATE	SCALE	DRAWN	CTT	DRS	DRS
SET REVISIONS							
SHEET REVISIONS							

DD FRESH BREW 1.0  
908 MARKET DRIVE, EMPORIA, VA

**ELECTRICAL  
POS PLAN AND DETAILS**

PC# 358084

**E-3.1**