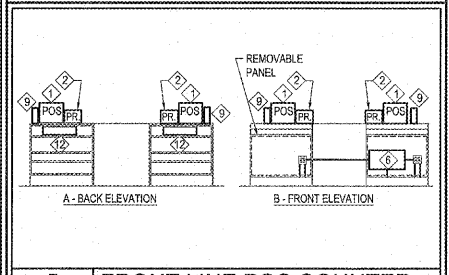
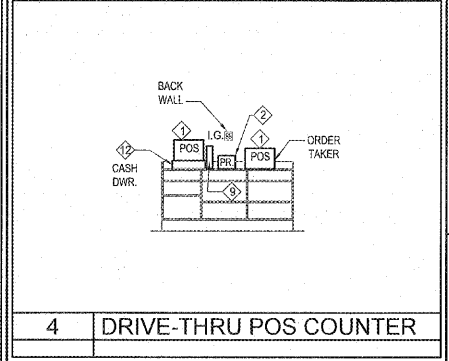
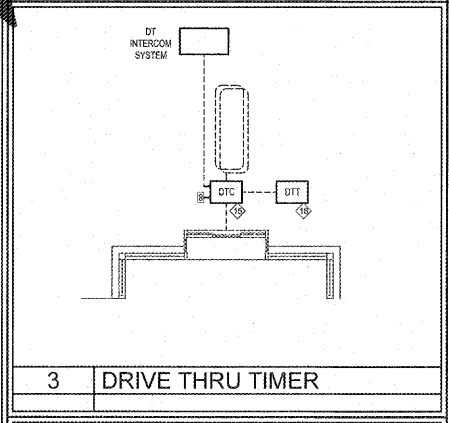


POS LEGEND

I.G.	100 V QUADRALEX OUTLET W/ISOLATED GROUND
I.G.	100 V DUPLEX OUTLET W/ISOLATED GROUND
▲	TELEPHONE OUTLET, R4S, BOX
△	DATA OUTLET, R4S
▽	QUAD DATA OUTLET, R4S
POS	POINT OF SALES TERMINAL (REQUIRED)
POS	POINT OF SALES TERMINAL (OPTIONAL)
VDU	VIDEO DISPLAY UNIT (REQUIRED)
VDU	VIDEO DISPLAY UNIT (FUTURE/OPTIONAL)
DTRD	DRIVE THROUGH REMOTE DISPLAY (REQUIRED)
DTCD	DRIVE THROUGH CONSOLE (REQUIRED)
R	MNS ROUTER
SW	SWITCH
FAX	FAX/PRINTER
M	MODEM
UPS	UPS
SC	SITE CONTROL (SELF-MOUNTING RADIANT ONLY)
RP	RESCRIPT PRINTER
PREP	PREP PRINTER
B.O.H. PC	OFF-HOUSE PC
◇	EQUIPMENT NOTE SEE SHEET E-3.1

GENERAL NOTES:

- REFER TO [HTTP://EXTRANET.DUNKINBRANDS.COM](http://extranet.dunkinbrands.com) FOR A LISTING OF APPROVED POS VENDORS BY CONCEPT.
- FINAL POS DRAWINGS NEED TO BE PROVIDED TO POS VENDOR THAT IS SELECTED.
- POS VENDORS REQUIRE DEDICATED ISOLATED GROUNDED (DIG) OUTLETS ON A 20 AMP CIRCUIT DEDICATED ONLY TO POS EQUIPMENT. 60HZ, 120V-10%. ALL POS TERMINALS AND VIDEO DISPLAY DEVICES REQUIRE A DUPLEX OUTLET. THE BACK OFFICE CONTROLLER REQUIRES A QUAD OUTLET. THE NETWORK SWITCH REQUIRES A DUPLEX. IF FEDERAL, STATE, AND LOCAL WIRING CODES DO NOT MEET THIS REQUIREMENT, CONTACT THE POS VENDOR FOR INFORMATION ON ADDITIONAL EQUIPMENT THAT CAN BE PURCHASED TO MEET THIS REQUIREMENT. IF THIS REQUIREMENT IS NOT MET, THE POS SYSTEM WARRANTY IS INVALID.
- ALL POWER INDICATED ON THIS PLAN MUST HAVE A THIRD WIRE, ISOLATED GROUND, AND BE TERMINATED WITHIN (4) FEET OF THE DEVICE.
- IG-5362 RECEPTACLES MUST BE USED FOR ALL POS UNITS, UNITS AND SITE CONTROLLER UNIT (IN OFFICE) (SEE RECEPTACLE ONLY).
- LOW VOLTAGE WIRE IS REQUIRED TO BE CATEGORY 5 CABLE RUN IN 1 1/2" CONDUIT FOR POS ES AND MUST BE TERMINATED WITH PULL STRINGS. ALL POS EQUIPMENT MUST BE TERMINATED AT THE FRONT COUNTER CHAIR.
- A 12" MINIMUM SEPARATION MUST BE MAINTAINED BETWEEN LOW VOLTAGE WIRES AND POWER WIRING (TO AVOID ELECTRICAL INTERFERENCE).
- BRAND REQUIREMENTS DICTATE THAT A MINIMUM OF THREE CONDUITS BE USED FOR DATA LINES BETWEEN THE OFFICE AND OTHER PARTS OF THE STORE- ONE CONDUIT IS TO BE DEDICATED TO POS WIRING, ONE FOR DIGITAL MENUBOARD DATA LINES, AND ANOTHER FOR NON-POS ITEMS (I.E. SECURITY CAMERAS, DT TIMERS, HEAD SET WIRING)
- EXACT # OF RECEPTACLES ON OFFICE MUST BE COORDINATED ON A PROJECT-BY-PROJECT BASIS IN TERMS OF EQUIPMENT LOCATED IN THE OFFICE
- ALL CEILING MOUNTED VDUS TO BE SUSPENDED FROM UNISTRUT BY THREADED ROD W/ WHITE PVC SLEEVE. CONNECT UNISTRUT TO ROOF STRUCTURE. VDU BY POS VENDOR; UNISTRUT & THREADED ROD BY G.C. UNISTRUT TO SUPPORT MINIMUM 50 LB. WEIGHT
- VDU MOUNTING HEIGHTS (TO BOTTOM OF MONITOR) ARE AS FOLLOWS:
 - SANDWICH STATION - 68" A.F.F.
 - DRIVE THRU - 61" A.F.F.
- DIGITAL MENUBOARD PREP WIRING:
 - PROVIDE BOX PLATE AND 1" DIA. CONDUIT FROM FROM (2) QUAD DATA OUTLETS IN MENUBOARD SOFFIT TO (2) QUAD DATA OUTLETS IN OFFICE WALL. EITHER (A) PROVIDE PULL STRING IN EACH CONDUIT (CAT 5 CABLE AND FINAL DATA CONNECTIONS BY DMB VENDOR), OR (B) PROVIDE ALL CAT 5 CABLE AND FINAL CONNECTIONS TO DATA PLATES/BOXES. COORD. W/ FEE



POS - COMMUNICATIONS

EQUIPMENT NOTES:

- VDU HEIGHT TO BE COORDINATED WITH EQUIPMENT AND SIGNAGE (SEE ELEVATIONS). G.C. IS TO PROVIDE SOLID IN-WALL BLOCKING FOR THE VDU AS REQUIRED.
- ONLY REQUIRED EQUIPMENT IS VISUALLY REPRESENTED AND TAGGED IS SHOWN ON THIS FLOOR PLAN. OPTIONAL EQUIPMENT IS TAGGED BUT NOT SHOWN GRAPHICALLY.

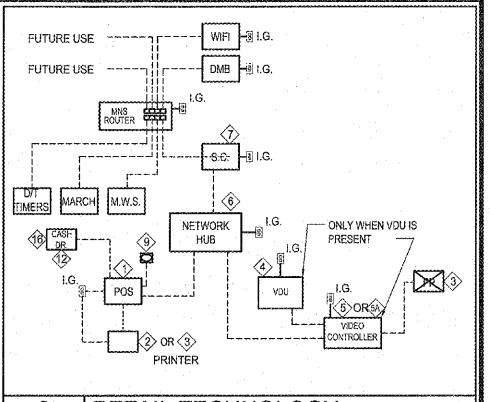
HIGH SPEED SYSTEM NOTES:

BEFORE HIGH SPEED CAN BE INSTALLED AT THE SITE, THE FOLLOWING ITEMS MUST BE IN PLACE PRIOR TO THE INSTALLATION. THESE ELEMENTS NEED TO BE IN PLACE 6-7 WEEKS BEFORE THE STORE OPENING TO ENSURE HIGH SPEED CONNECTIVITY.

- SINGLE, 2" DEDICATED CONDUIT FROM BUILDING TO CURB, W/ 3-4 PULL STRINGS
- FRAMED OFFICE IN A BUILDING THAT HAS A ROOF. CEMENT FLOORS AND EXTERIOR WALLS. ENSURE RECEPTACLE IN PLACE AND POWERED FOR ROUTER CONNECTION.
- GROUNDING ELECTRICAL (QUAD OUTLET) - THE FOLLOWING IS A LIST OF ACCEPTABLE GROUNDS IN ORDER OF PREFERENCE:
 - BUILDING SERVICE GROUND (MAIN GROUND ELECTRODE SYSTEM)
 - MAIN ELECTRIC BOX
 - BUILDING STEEL
 - WATER PIPE (AN ACCEPTABLE WATER PIPE IS A METAL UNDERGROUND WATER PIPE IN DIRECT CONTACT WITH THE EARTH FOR 10 FEET OR MORE AND ELECTRICALLY CONTINUOUS TO THE POINT WHERE THE PROTECTOR GROUND IS INSTALLED)

MARCH SURVEILLANCE SYSTEM NOTES:

- DEDICATED RECEPTACLE REQUIRED, 24" A.F.F.
- CLEAR WALL SPACE REQUIRED = 24" X 24" TO HANG DVR. REFER TO MANUFACTURER'S SPECIFICATION SHEET. UNIT IS DOCKED IN A LOCKABLE BRACKET WHICH ALLOWS UNIT TO SLIDE OUT.
- A DEDICATED PORT (#2) ON MNS ROUTER IS ASSIGNED TO MARCH SYSTEMS.
- DUNKIN BRANDS REQUIRES A MINIMUM OF ONE (1) CAMERA PER REGISTER TO BE CONSIDERED AS A COMPLIANT INSTALLATION.



1 POS PLAN
1/4" = 1'-0"

Order Plans @ WWW.WWJEDD.COM

THESE PLANS ARE CONFIDENTIAL PROPERTY OF DUNKIN' BRANDS, INC. UNLESS OTHERWISE INDICATED. NO OTHER RESTRICTED ACCESS.

Dunkin' Brands

PROJECT NO.: 17229

NRD national restaurant designers ARCHITECTS & ENGINEERS

3005 Corrington Mill Blvd., Morrisville, NC 27560
ph: 919 544 7251 fax: 919 544 9399
A Division of LMNT Associates

COMMISSIONER OF VIRGINIA REGISTRATION & PROFESSIONAL STANDARDS

NO	DESCRIPTION	DATE	SCALE	DRAWN	CHKD	APPD
1	OWNER COMMENTS (RESTROOM CHANGE)	5/2/18				

SET REVISIONS	DATE	SCALE	DRAWN	CHKD	APPD	
NO	DESCRIPTION	DATE	SCALE	DRAWN	CHKD	APPD
1	OWNER COMMENTS (RESTROOM CHANGE)	5/2/18				

DD FRESH BREW 1.0
908 MARKET DRIVE, EMPORIA, VA

ELECTRICAL
POS PLAN AND DETAILS

PC #358084

E-3.0