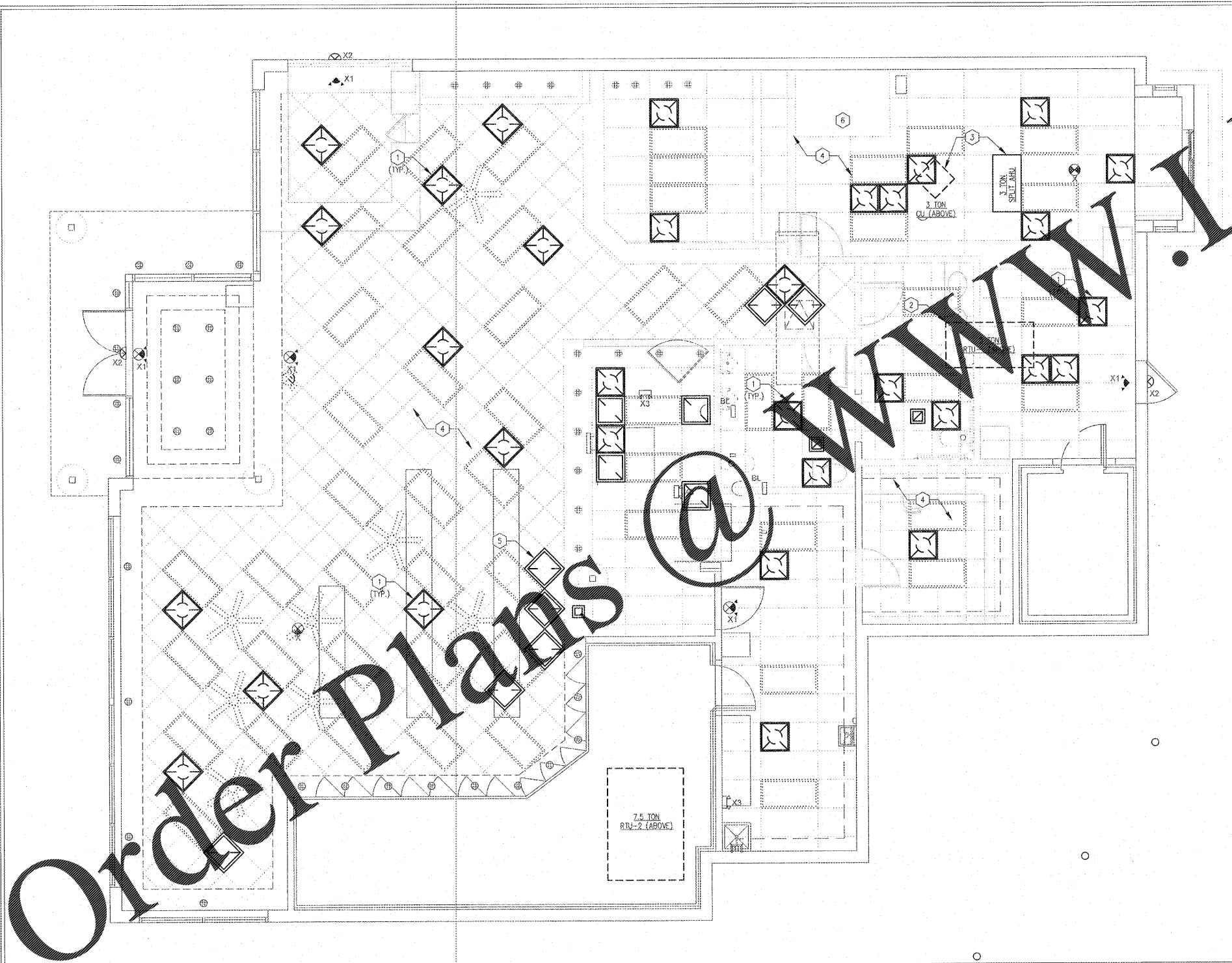


Order Plans @ WWW.LDILine.com



GENERAL NOTES:

A. SEE SHEET M-2.0 FOR NON-SHEET SPECIFIC MECHANICAL NOTES.

B. M.C. SHALL FIELD VERIFY EXISTING CONDITIONS PRIOR TO STARTING WORK. MECHANICAL SCOPE INCLUDES THE DEMOLITION AND REPLACEMENT OF THE EXISTING RTU-1 DUCT SYSTEM, RELOCATED RESTROOM SYSTEMS, AND NEW DIFFUSERS LOCATED WITHIN NEW CEILING GRIDS RECONNECTED TO EXISTING DUCT SYSTEMS. NEW TEST AND BALANCING IS REQUIRED, SEE SHEET M-2.0 FOR APPLICABLE REQUIREMENTS.

C. SEE SHEET M-1.1 FOR NEW FLOOR WORK.

KEYED NOTES:

1. REMOVE ALL EXISTING DIFFUSERS AND GRILLES. SEE SHEET M-1.1 FOR NEW WORK.
2. REMOVE EXISTING DUCT SYSTEM FOR RTU-1. CONTRACTOR SHALL FULLY INVESTIGATE DUCT SYSTEMS TO BE REMOVED PRIOR TO REMOVAL AND ADVISE OF POTENTIAL CONFLICTS PRIOR TO BEGINNING WORK. REMOVE ASSOCIATED EXISTING THERMOSTATS AND SENSORS. SEE SHEET M-1.1 FOR NEW WORK.
3. REMOVE EXISTING 3 TON SPLIT SYSTEM. CONTRACTOR SHALL FULLY INVESTIGATE SYSTEMS TO BE REMOVED PRIOR TO REMOVAL AND ADVISE OF POTENTIAL CONFLICTS PRIOR TO BEGINNING WORK. SEE SHEET M-1.1.
4. FIELD VERIFY SITE CONDITIONS PRIOR TO BEGINNING DEMOLITION. REVIEW COMPLETE SET OF PLANS PRIOR TO BEGINNING DEMOLITION. SUBMIT FINDINGS FOR REVIEW AND ADVISE OF POTENTIAL CONFLICTS PRIOR TO BEGINNING WORK.
5. M.C. SHALL REMOVE BRANCH DUCT SERVING THIS DIFFUSER BACK TO MAIN AND SEAL AIRTIGHT.
6. M.C. SHALL REMOVE EXISTING LOHN JOHN SILVERS HOOD, DUCT, AND ANSUL SYSTEM.

1 MECHANICAL DEMOLITION FLOOR PLAN
1/4"=1'-0"

NOTE: DRAWINGS ARE NOT TO SCALE IF SHEET IS PLOTTED ON 11" x 17"

THESE PLANS ARE CONFIDENTIAL PROPERTY OF DUNKIN' BRANDS, INC. UNDER RESTRICTED ACCESS.

dunkin' brandsSM

PROJECT NO.: 17229

NRD national restaurant designers
ARCHITECTS & ENGINEERS

3005 Carrington Mill Blvd., Morrisville, NC 27560
ph: 919 544 7251 fax: 919 544 9399
A Division of LMHT Associates

NO	DESCRIPTION	DATE	DATE	SCALE	DRAWN	CKD	APPD

DD FRESH BREW 1.0
DUNKIN' DESIGN GUIDELINES

MECHANICAL
DEMOLITION FLOOR PLAN

PC NUMBER

M-1.0