

NOTE:
REFER TO CONSTRUCTION SPECIFICATIONS FOR MORE INFORMATION.

NOTE 1:
SPEAKER POST TO BE LOCATED 8'-0" FROM CENTER OF D/T WINDOW TO CENTER OF SPEAKER POST

NOTE 2:
CONSULT APPLICABLE CODES, ORDINANCES AND LAWS FOR ALL SPECIFIC SITE DESIGN REQUIREMENTS

NOTE 3:
CONCRETE PAD AT DRIVE THRU LOOP/DETECTOR SHOULD MATCH THE ADJACENT LOT SURFACE MATERIAL AS MUCH AS POSSIBLE. PROVIDE BLACK STAINED CONCRETE WHEN USED ADJACENT TO ASPHALT MATERIAL.

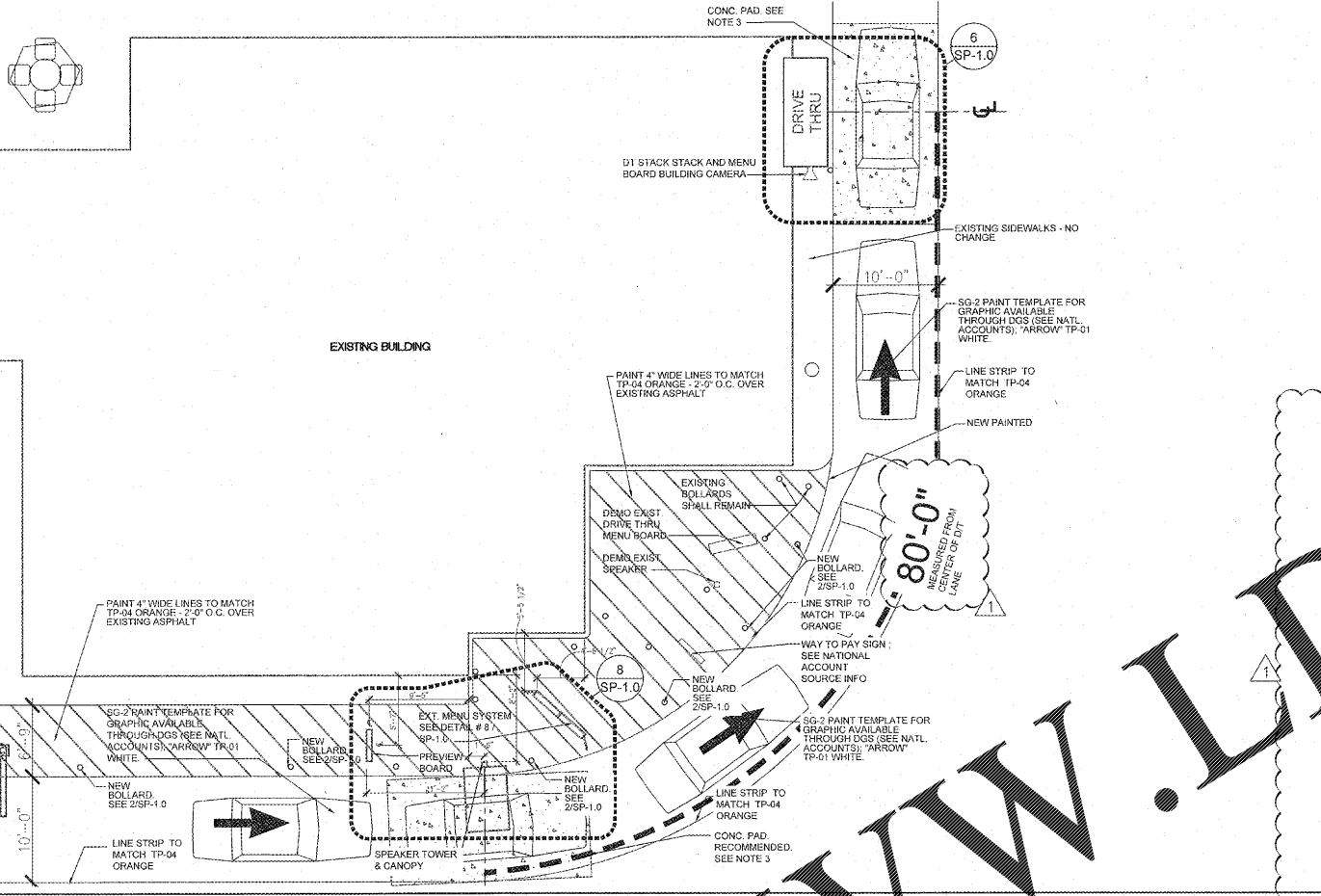
"SOFFIT ENTRY" HEIGHT LIMITATION BAR. SEE NATIONAL ACCOUNT SOURCE INFO.

DRIVE THRU SIGN

LINE STRIP TO MATCH TP-04 ORANGE

DS-1 PAINT TEMPLATE FOR GRAPHIC AVAILABLE THROUGH DGS (SEE NATL. ACCOUNTS); "AMERICA RUNS ON DUNKIN' TP-04 ORANGE; "STARTING LINE" TP-01 WHITE; "START" TP-05 PINK

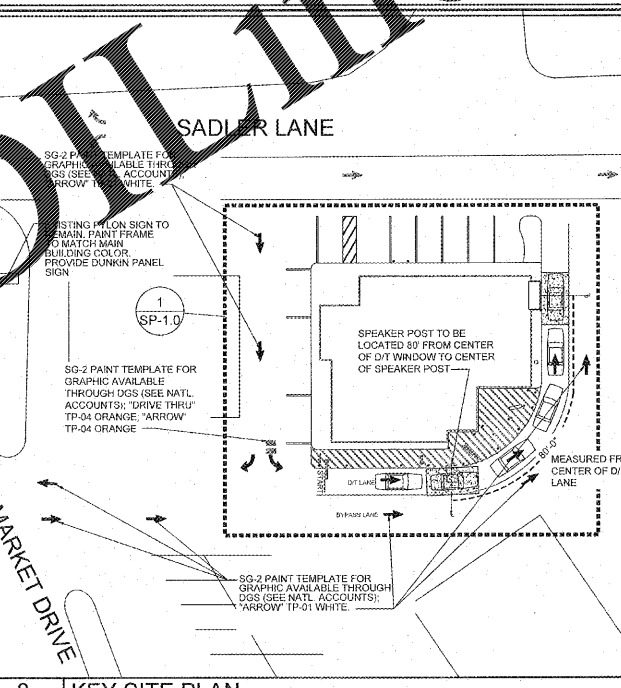
NOTE: PROPERLY PREP THE ASPHALT BEING PAINTED VIA PRESSURE WASH BEFORE PAINTING THE "AMERICA RUNS ON DUNKIN'" STENCIL AT DRIVE THRU.



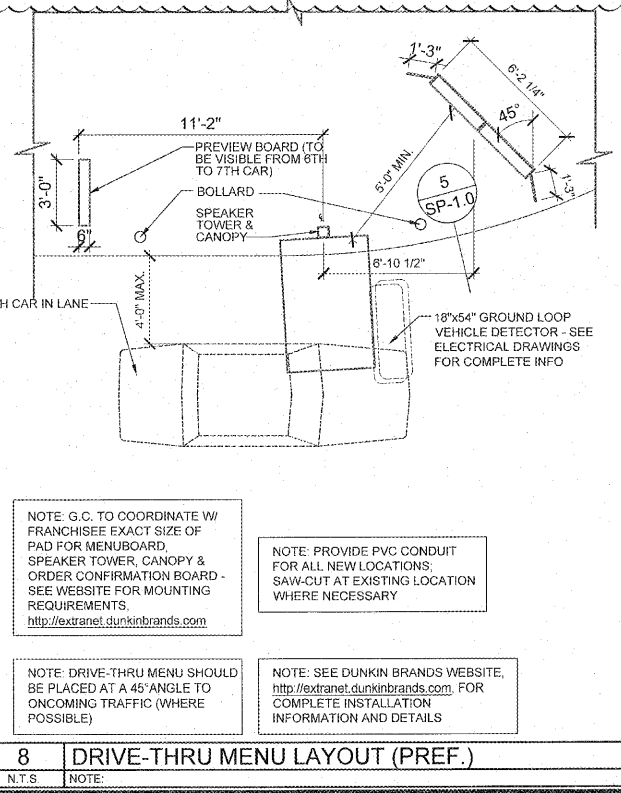
FINISH MATERIAL SCHEDULE - Traffic Striping Paint

CHECKED: 10/07/2016

CODE	MATERIAL	MANUFACTURER	PRODUCT #	DESCRIPTION / REMARKS
TP-01	PAINT	SHERWIN WILLIAMS	Pro Park	"White": B97WD2434
TP-02	PAINT	SHERWIN WILLIAMS	Pro Park	"Blue": B97LD2022
TP-03	PAINT	SHERWIN WILLIAMS	Pro Park	"Yellow": B97YD2467
TP-04	PAINT	SHERWIN WILLIAMS	Pro Park	"Orange": Custom Mix B97YD2467 CCE* Colorant 02 32 64 128 W1-White 6 1 R4-New red 4 5 Y3-Deep Gold 6 1 "Pink": Custom Mix B97RD2012 CCE* Colorant 02 32 W1-White 6 -Blue 6
TP-05	PAINT	SHERWIN WILLIAMS	Pro Park	"Orange": Custom Mix B97YD2467 CCE* Colorant 02 32 64 128 W1-White 6 1 R4-New red 4 5 Y3-Deep Gold 6 1 "Pink": Custom Mix B97RD2012 CCE* Colorant 02 32 W1-White 6 -Blue 6

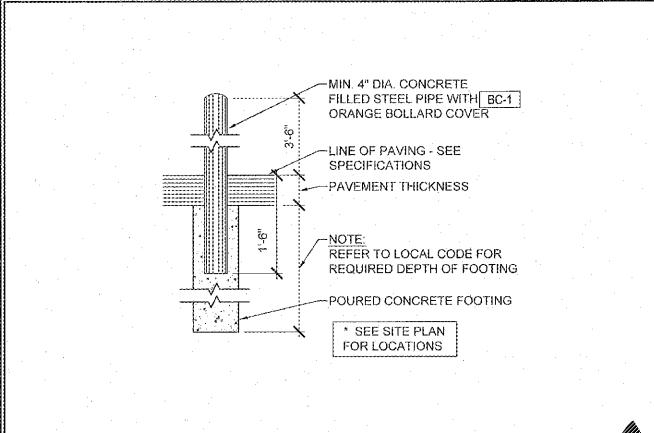


8 KEY SITE PLAN
N.T.S. NOTE

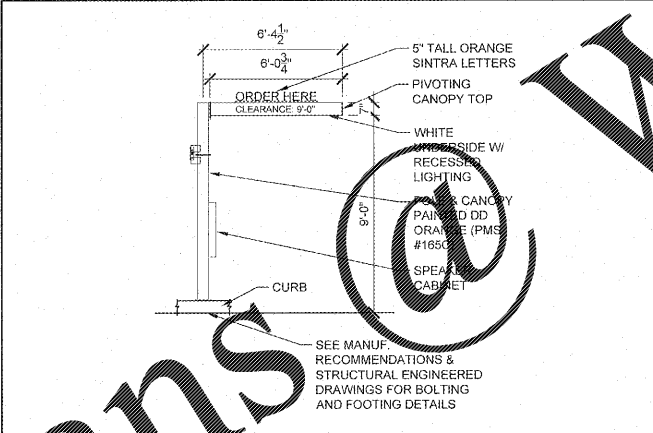


8 DRIVE-THRU MENU LAYOUT (PREF.)
N.T.S. NOTE

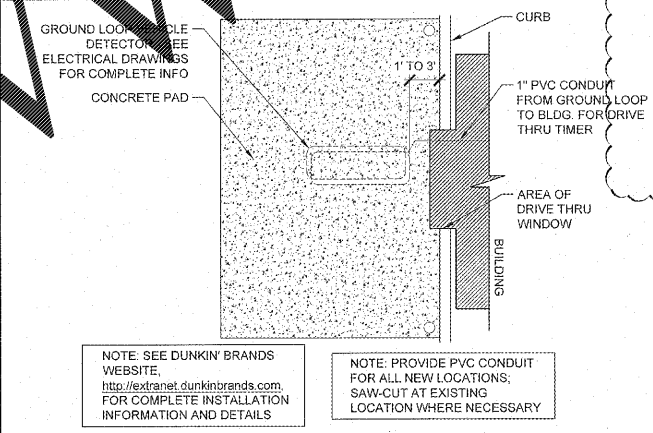
1 SCHEMATIC SITE PLAN
1/8" = 1'-0" NOTE



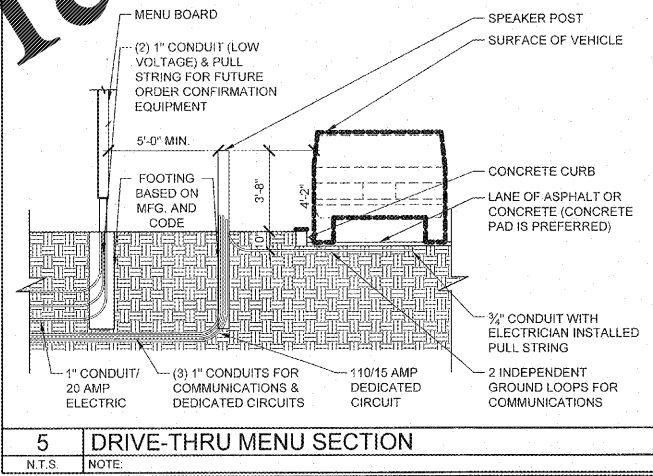
2 BOLLARD DETAIL
3/4" = 1'-0" NOTE



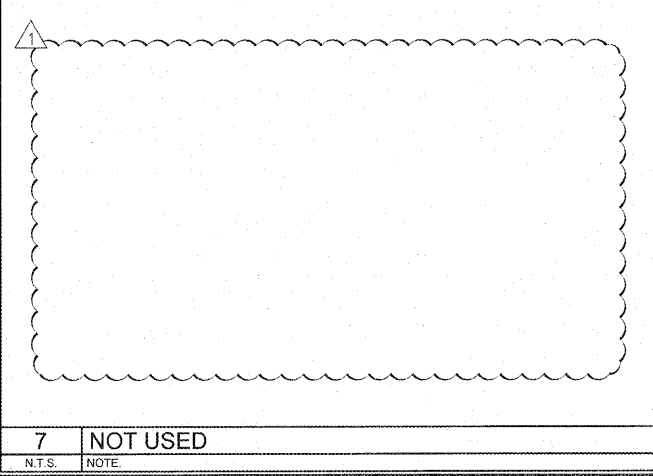
4 HEIGHT DETECTION BAR
1/4" = 1'-0" NOTE



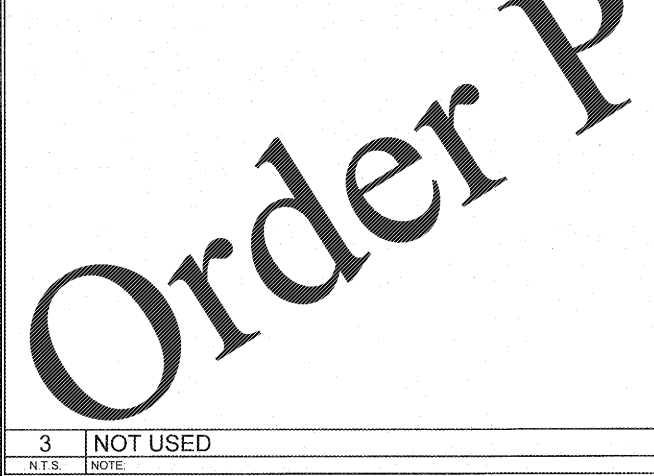
6 DRIVE-THRU TIMER AT WINDOW
N.T.S. NOTE



5 DRIVE-THRU MENU SECTION
N.T.S. NOTE



7 NOT USED
N.T.S. NOTE



3 NOT USED
N.T.S. NOTE

THESE PLANS ARE CONFIDENTIAL PROPERTY OF DUNKIN' BRANDS, INC. UNLESS OTHERWISE INDICATED. NO OTHER RESTRICTED ACCESS.

Dunkin' Brands

PROJECT NO.: 17229

NRD national restaurant designers
ARCHITECTS & ENGINEERS

3005 Carrington Mill Blvd., Morrisville, NC 27560
ph: 919 544 7251 fax: 919 544 9399

A Division of LMHT Associates

COMMONWEALTH OF VIRGINIA
Lic. No. 009911
3/16

NO.	DESCRIPTION	DATE	SCALE	DRAWN BY	CKD	TD	APPD
1	OWNER COMMENTS (RESTROOM CHANGE)	5/2/18					
	SHEET REVISIONS						

DD FRESH BREW 1.0
908 MARKET DRIVE, EMPORIA, VA

SCHEMATIC SITE PLANS AND DETAILS

PC# 358084

SP-1.0

Order Plans @ WWW.LDILLINE.COM

NOTE: DRAWINGS ARE NOT TO SCALE IF SHEET IS PLOTTED ON 11" x 17"