

**#ATL034**  
**CONYERS, GA**

**Krystal**



3/22/18

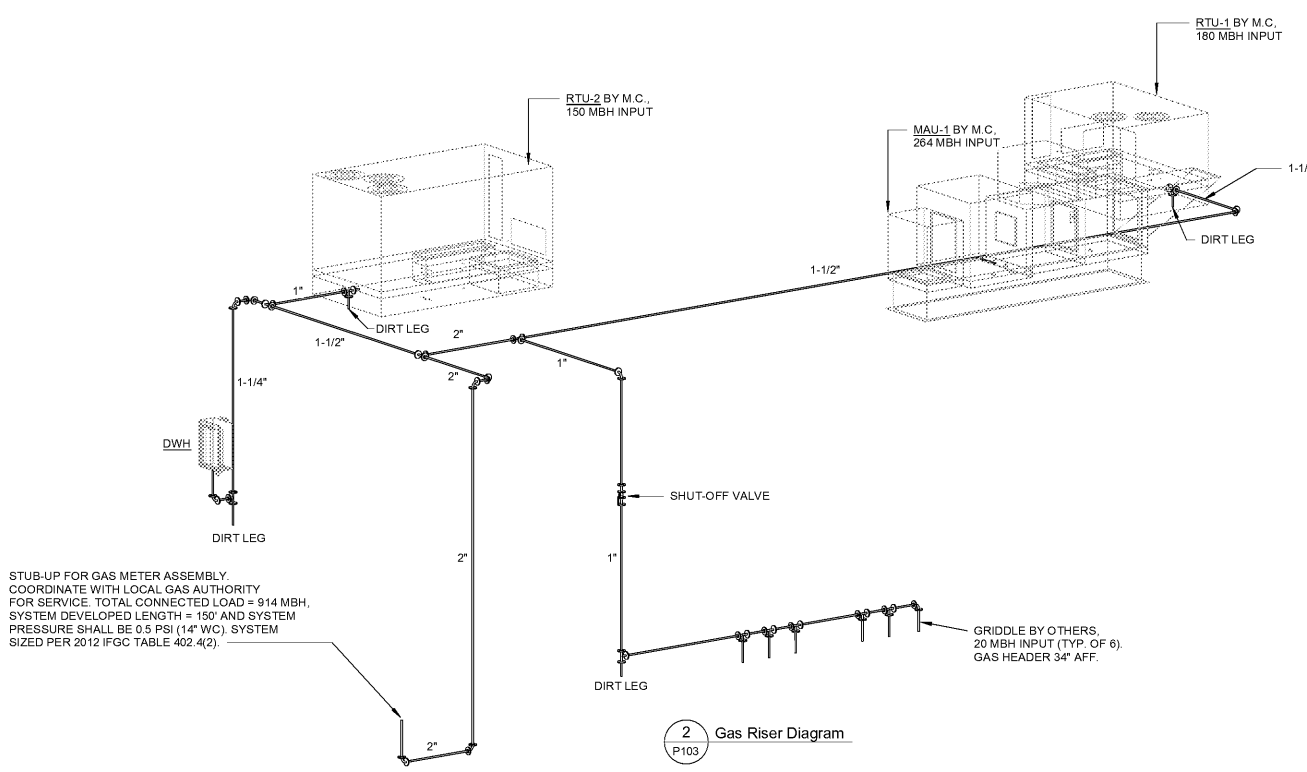
**ISSUED FOR CONSTRUCTION**  
 1447 Highway 138  
 Conyers, Georgia 30012  
 Rockdale County, Georgia

Revisions		
#	Date	Description

Project Number: 19028  
 Issued for: CONSTRUCTION  
 Issue Date: 03/22/18

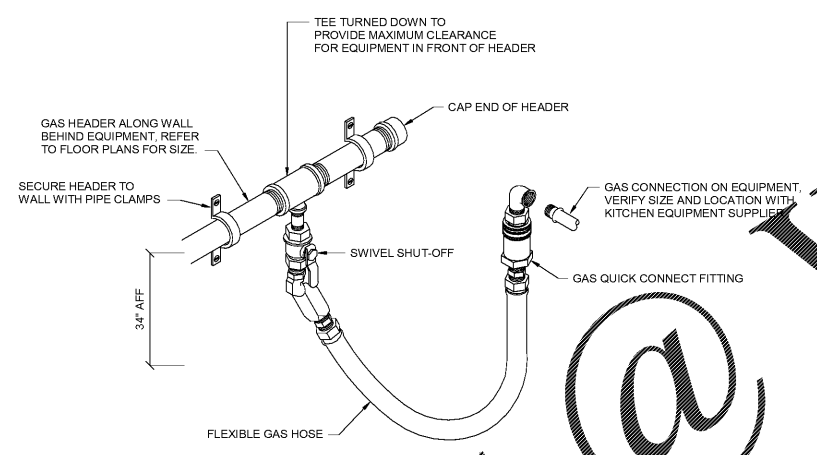
DRAWING TITLE  
**Plumbing Floor Plan - Gas**

SHEET NUMBER  
**P103**



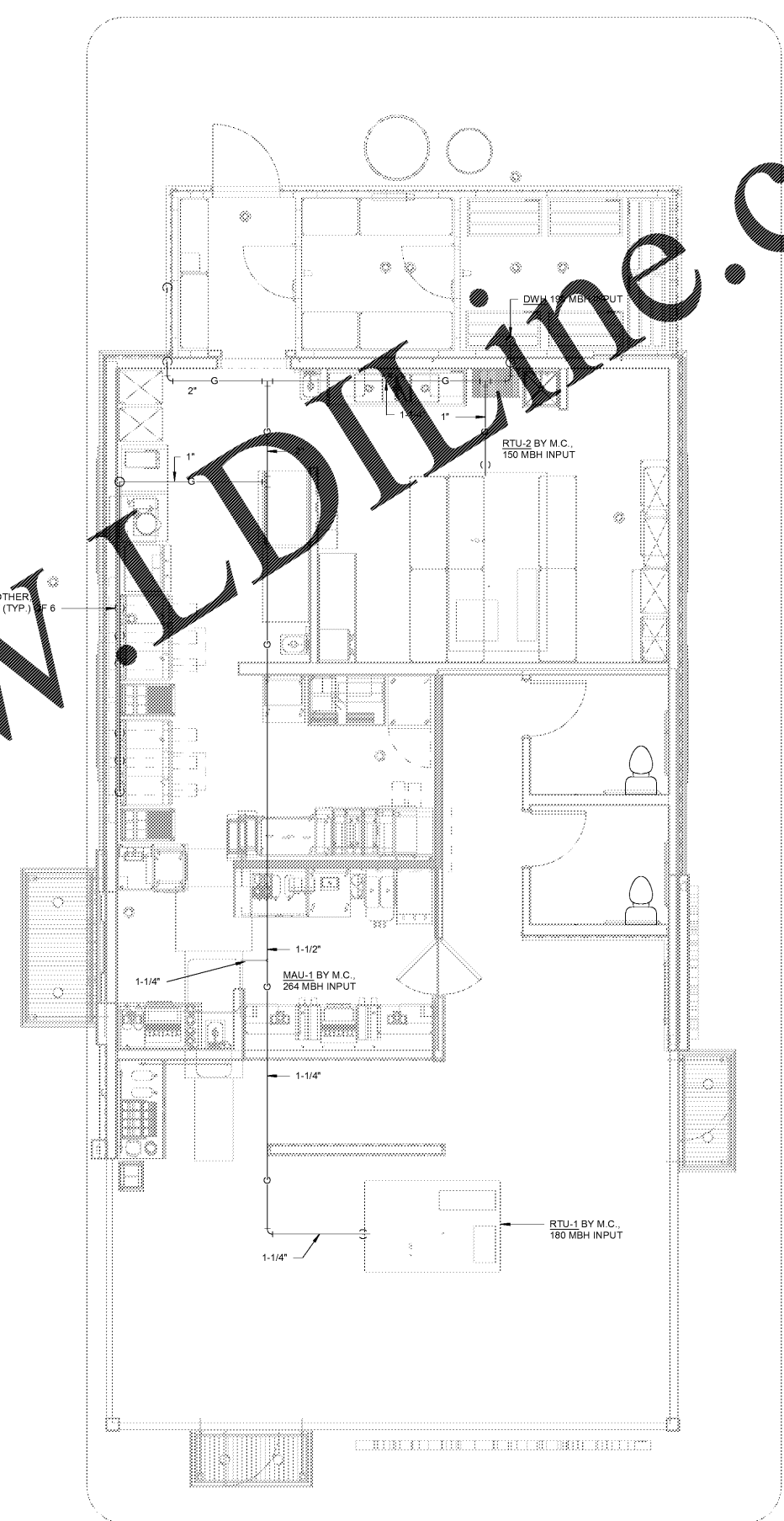
STUB-UP FOR GAS METER ASSEMBLY. COORDINATE WITH LOCAL GAS AUTHORITY FOR SERVICE. TOTAL CONNECTED LOAD = 914 MBH. SYSTEM DEVELOPED LENGTH = 150' AND SYSTEM PRESSURE SHALL BE 0.5 PSI (1.4\"/>

**2 Gas Riser Diagram**  
 P103



**3 KITCHEN EQUIPMENT GAS CONNECTION DETAIL**  
 P103 NOT TO SCALE

GAS LOAD SCHEDULE			
EQUIPMENT	QTY	GAS SIZE (IN)	INPUT
DOMESTIC WATER HEATER	1	3/4"	199,900 BTUH/EACH
ROOFTOP UNIT (RTU-1)	1	3/4"	180,000 BTUH/EACH
ROOFTOP UNIT (RTU-2)	1	3/4"	150,000 BTUH/EACH
MAKE-UP AIR UNIT (MAU-1)	1	3/4"	264,000 BTUH/EACH
GRIDDLE	6	3/4"	20,000 BTUH/EACH
TOTAL CONNECTED LOAD			913,900 BTU/HR



**1 Gas Piping**  
 P103 1/4" = 1'-0"

Order Plans @