

#ATL034
CONYERS, GA

Krystal



3/22/18

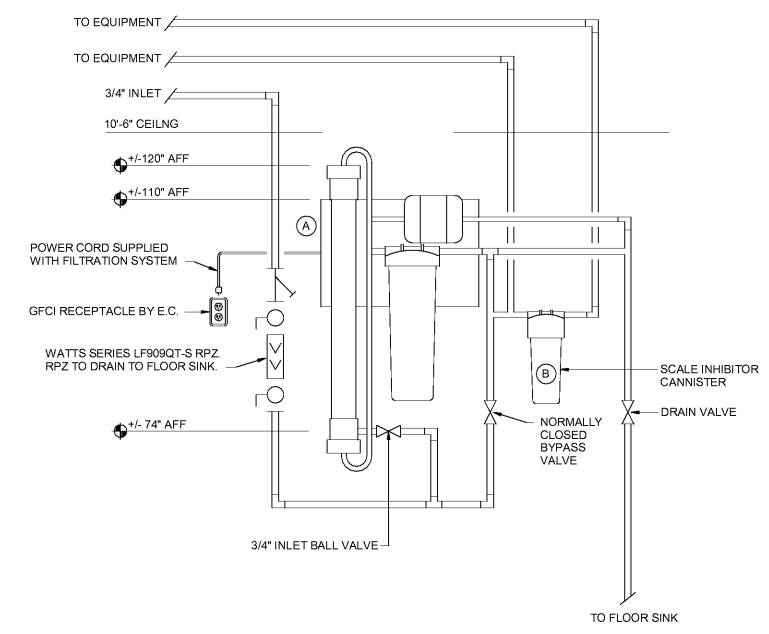
ISSUED FOR CONSTRUCTION
 1447 Highway 138
 Conyers, Georgia 30012
 Rockdale County, Georgia

Revisions		
#	Date	Description

Project Number: 19028
 Issued for: CONSTRUCTION
 Issue Date: 03/22/18

DRAWING TITLE
Plumbing Floor Plan - Water

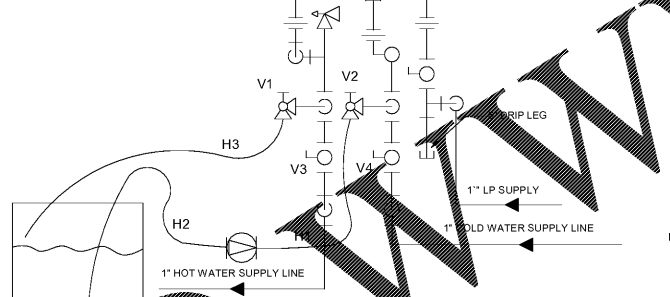
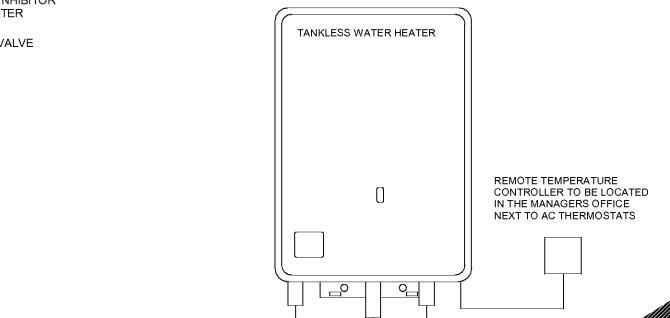
SHEET NUMBER
P102



VIZION WATER FILTERS BY A.J. ANTUNES & CO. PROVIDED BY EQUIPMENT SUPPLIER INSTALLED BY PLUMBER.

(A) VZN-441V-T5 CARBON FILTER
 (B) SI-XL SCALE INHIBITOR

NOTE: EXTEND WATER FILTER DRAIN LINE TO FLOOR SINK SERVING ICE MACHINE. SEE HUB DRAIN DETAIL FOR ADDITIONAL INFORMATION.

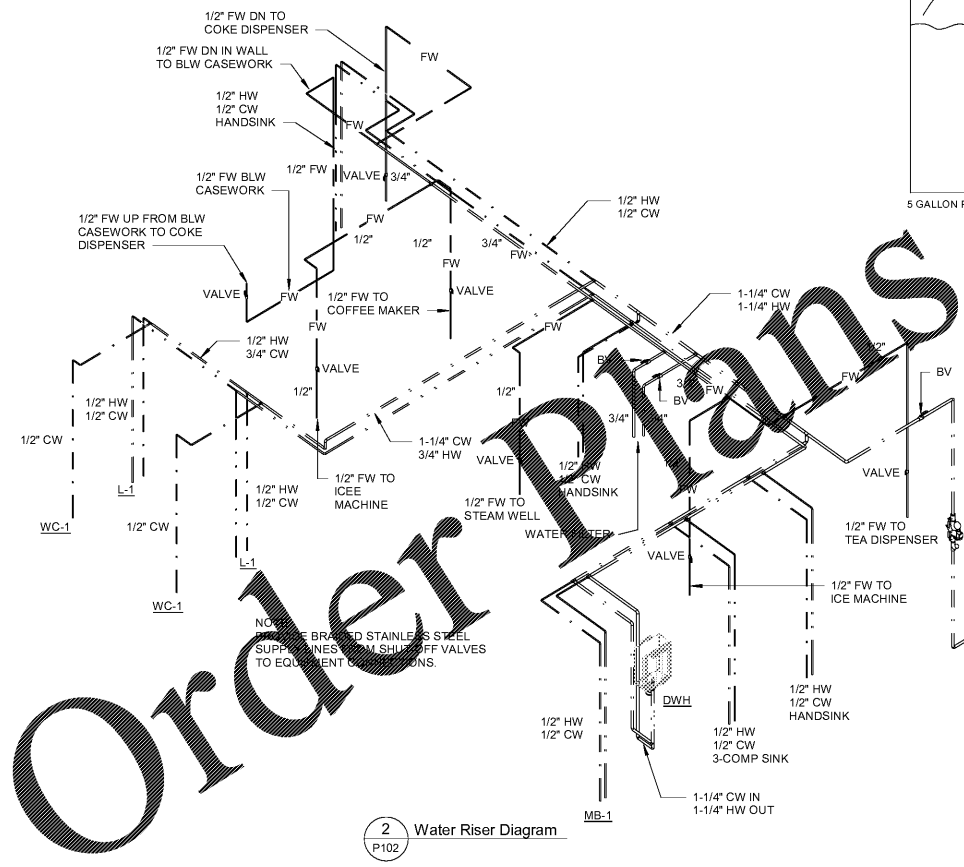


NOTE: PLUMBING CONTRACTOR TO PROVIDE AND INSTALL ALL NECESSARY SHUT-OFF VALVES, BACK-FLOW PREVENTERS, ETC. FOR FUTURE TANKLESS WATER HEATER. SEE DETAIL ABOVE FOR SUGGESTED LAYOUT.

RINSE WATER HEATER FLUSH PROCEDURE:

- DISCONNECT POWER TO RINNAL WATER HEATER
- CLOSE VALVES V3 AND V4
- CONNECT PUMP OUTLET HOSE H1 TO SERVICE VALVE V2
- CONNECT DRAIN HOSE H3 TO VALVE V1
- POUR APPROXIMATELY 4 GALLONS OF VIRGIN, FOOD GRADE, WHITE VINEGAR (OR VIRGIN, FOOD GRADE CITRIC ACID) INTO PAIL
- PLACE FREE ENDS OF HOSE H2 AND H3 INTO PAIL
- OPEN VALVES V1 AND V2
- TURN ON POWER TO CIRCULATING PUMP AND ALLOW SOLUTION TO CIRCULATE THROUGH WATER HEATER FOR 45 MINUTES
- TURN OFF POWER TO CIRCULATING PUMP
- REMOVE END OF HOSE H3 FROM PAIL
- CLOSE VALVE V2 AND OPEN VALVE V4 ONLY DO NOT OPEN VALVE V3 AT THIS TIME
- ALLOW WATER TO FLOW OUT OF HOSE H3 FOR 5 MINUTES, RINSING CLEANING SOLUTION FROM WATER HEATER.
- CLOSE VALVE V1 AND OPEN VALVE V3
- DISCONNECT HOSES H1 AND H3 FROM SERVICE VALVES
- REMOVE IN-LINE FILTER FROM WATER HEATER COLD WATER INLET AND CLEAN OUT ANY RESIDUE. PLACE FILTER BACK INTO UNIT.
- RESTORE POWER TO WATER HEATER.

4 TANKLESS WATER HEATER DETAIL
 SCALE: 1/4" = 1'-0"



2 Water Riser Diagram
 P102

1-1/2" DOMESTIC SERVICE RISER, W/ WATTS SERIES LF909 RPZ BEP IN CORNER OF BUILDING.
 SEE SITE UTILITY PLAN FOR CONT.

- DRAIN VALVE
- PRESSURE RELIEF VALVE
- 1" BALL VALVE (TYP.)
- 1" UNION (TYP.)
- CIRCULATING PUMP

KEYED NOTES THIS SHEET

- CONNECT 1/2" CW TO ICE MACHINE WITH BALL VALVE AND WATTS SERIES LF7 DUAL CHECK VALVE. VERIFY EXACT LOCATION AND SIZE OF CONNECTION WITH EQUIPMENT SUPPLIER.
- CONNECT 1/2" CW TO TEA BREWER COFFEE MACHINE OR BEVERAGE DISPENSER WITH ANGLE COMPRESSION STOP MOUNTED BEHIND EQUIPMENT AND WATTS SERIES SD-3 DUAL CHECK VALVE. VERIFY EXACT LOCATION AND SIZE OF CONNECTION WITH EQUIPMENT SUPPLIER.
- CONNECT 1/2" CW TO STEAM WELL WITH BALL VALVE AND WATTS SERIES LF7 DUAL CHECK VALVE. VERIFY EXACT LOCATION AND SIZE OF CONNECTION WITH EQUIPMENT SUPPLIER.
- DROP 3/4" CW PIPING DOWN TO FILTRATION SYSTEM BY OTHERS. VERIFY EXACT LOCATION AND SIZE OF CONNECTION WITH EQUIPMENT SUPPLIER. SEE DETAIL THIS SHEET FOR ADDITIONAL INFORMATION.
- EXTEND 3/4" FILTERED WATER (FW) TO EQUIPMENT.

1 Water Piping
 SCALE: 1/4" = 1'-0"