

**#ATL034**  
**CONYERS, GA**

**Krystal**



3/22/18

**ISSUED FOR CONSTRUCTION**

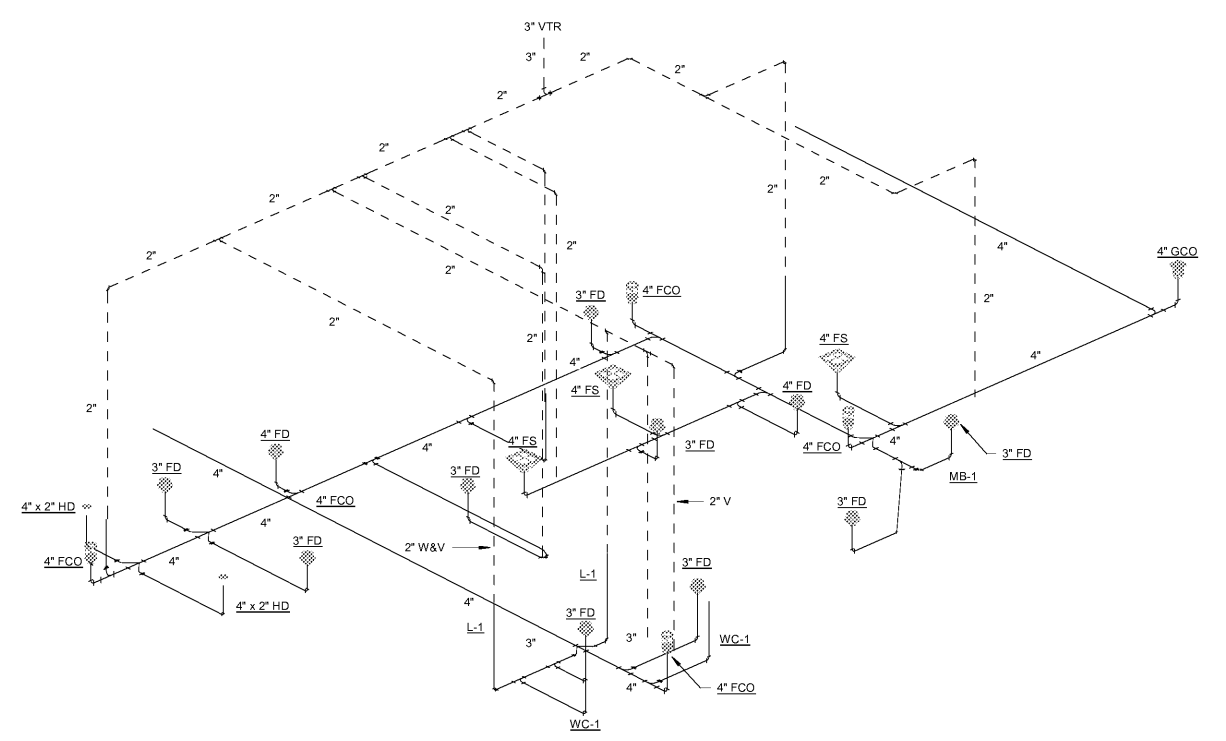
1447 Highway 138  
 Conyers, Georgia 30012  
 Rockdale County, Georgia

Revisions		
#	Date	Description

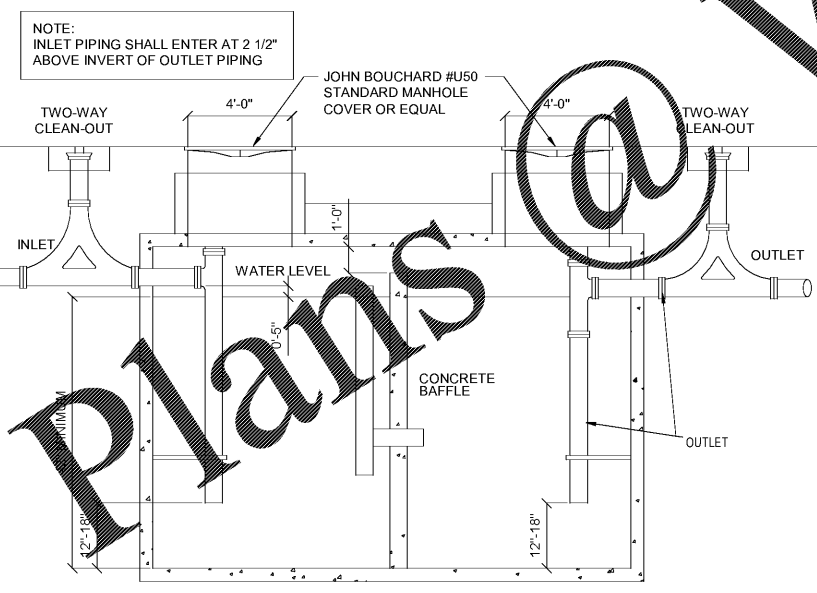
Project Number: 18028  
 Issued for: CONSTRUCTION  
 Issue Date: 03/22/18

DRAWING TITLE  
**Plumbing Floor Plan - Sanitary**

SHEET NUMBER  
**P101**



2 Sanitary Riser  
 P101



GREASE TRAP IS TO BE FURNISHED & INSTALLED BY PLUMBING CONTRACTOR. THE INSTALLATION SHOWN IS MINIMUM REQUIREMENT, HOWEVER, ALL FEDERAL, STATE & LOCAL REQUIREMENTS MUST BE MET BY PLUMBING CONTRACTOR.

NOTE: INLET PIPING SHALL ENTER AT 2 1/2\"/>

3 1500 GAL GREASE INTERCEPTOR DETAIL  
 P101 SCALE: NOT TO SCALE

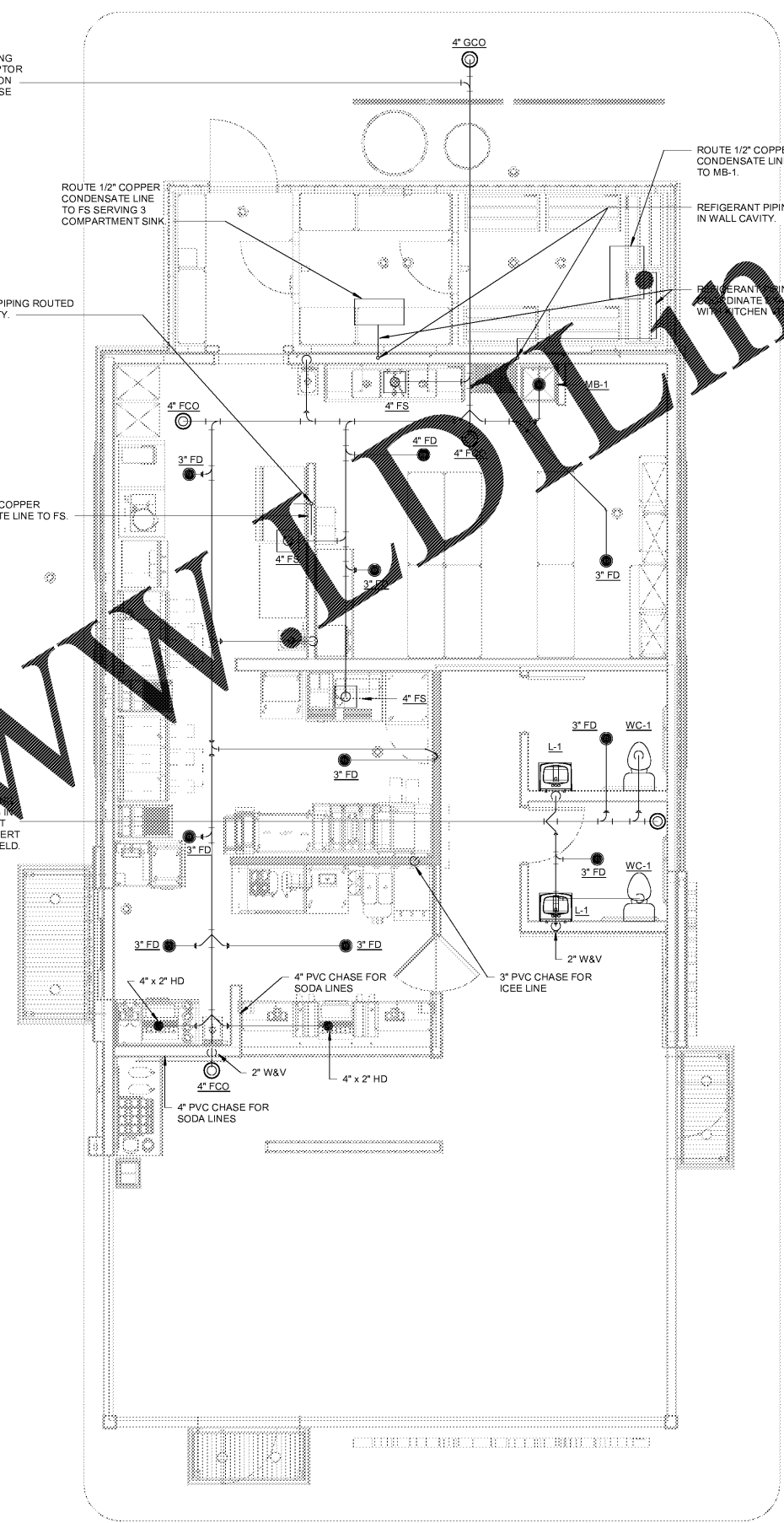
EXTEND 4\"/>

ROUTE 1/2\"/>

REFRIGERANT PIPING ROUTED IN WALL CAVITY.

ROUTE 1/2\"/>

EXTEND NEW 4\"/>



1 Sanitary Piping  
 P101 1/4\"/>

Order Plans @ WWW.WAVEDIAGRAMS.COM

WWW.WAVEDIAGRAMS.COM