

#ATL034
 CONYERS, GA



3/22/18
ISSUED FOR CONSTRUCTION
 1447 Highway 138
 Conyers, Georgia 30012
 Rockdale County, Georgia

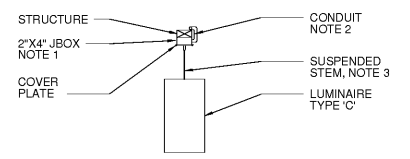
Revisions		
#	Date	Description

KEYED NOTES

1. THE CONTRACTOR SHALL COORDINATE EXACT REQUIREMENTS WITH COOLER/FREEZER EQUIPMENT VENDOR PRIOR TO ANY ROUGH-IN WORK. SEE SHEET E201 FOR ADDITIONAL WORK THIS AREA.
2. OUTLET BOX FOR 'KRYSTAL' SIGNAGE LOCATED ABOVE CEILING. THE CONTRACTOR SHALL MAKE ALL FINAL CONNECTIONS AS DIRECTED BY SIGN VENDOR. THE CIRCUIT SHALL BE RAN THROUGH LIGHTING CONTRACTOR. COORDINATE DISCONNECTING MEANS AND PROVIDE WEATHERPROOF ENCLOSURES AS REQUIRED FOR INSTALLATION.
3. HOOD LIGHTS TO BE PROVIDED BY HOOD VENDOR/MANUFACTURE. SEE GENERAL NOTES FOR ILLUMINATION LEVELS & SHATTERPROOF LENS/HOUSING NOTATIONS.
4. DIGITAL MENU BOARD CONNECTION. CONNECTION AT 9'-0". SEE ARCHITECTURAL ELEVATIONS FOR MOUNTING LOCATION.
5. LED LIGHT BAND AT TOP OF ARCHITECTURAL FEATURE BY SIGN COMPANY. COORDINATE PLACEMENT WITH ARCHITECT DETAILS AND SIGN VENDOR PRIOR TO ANY ROUGH IN WORK.
6. SEE POWER PLAN & ARCHITECTURAL ELEVATIONS FOR PLACEMENT OF DEVICES.
7. TRACK SHALL BE INSTALLED TO BOTTOM OF TRUSS BRACING.
8. THE CONTRACTOR SHALL PROVIDE WEATHER PROOF JUNCTION BOX AND CONNECTION FOR SIGN VENDOR'S UP/DOWN CANOPY LIGHTING. COORDINATE LOCATION WITH OTHER TRADEWORK PRIOR TO ANY ROUGH-IN. PROVIDE DISCONNECTING MEANS AND FINAL CONNECTIONS. CIRCUIT CONTROLLED VIA LIGHTING CONTACTOR.

LIGHTING GENERAL NOTES

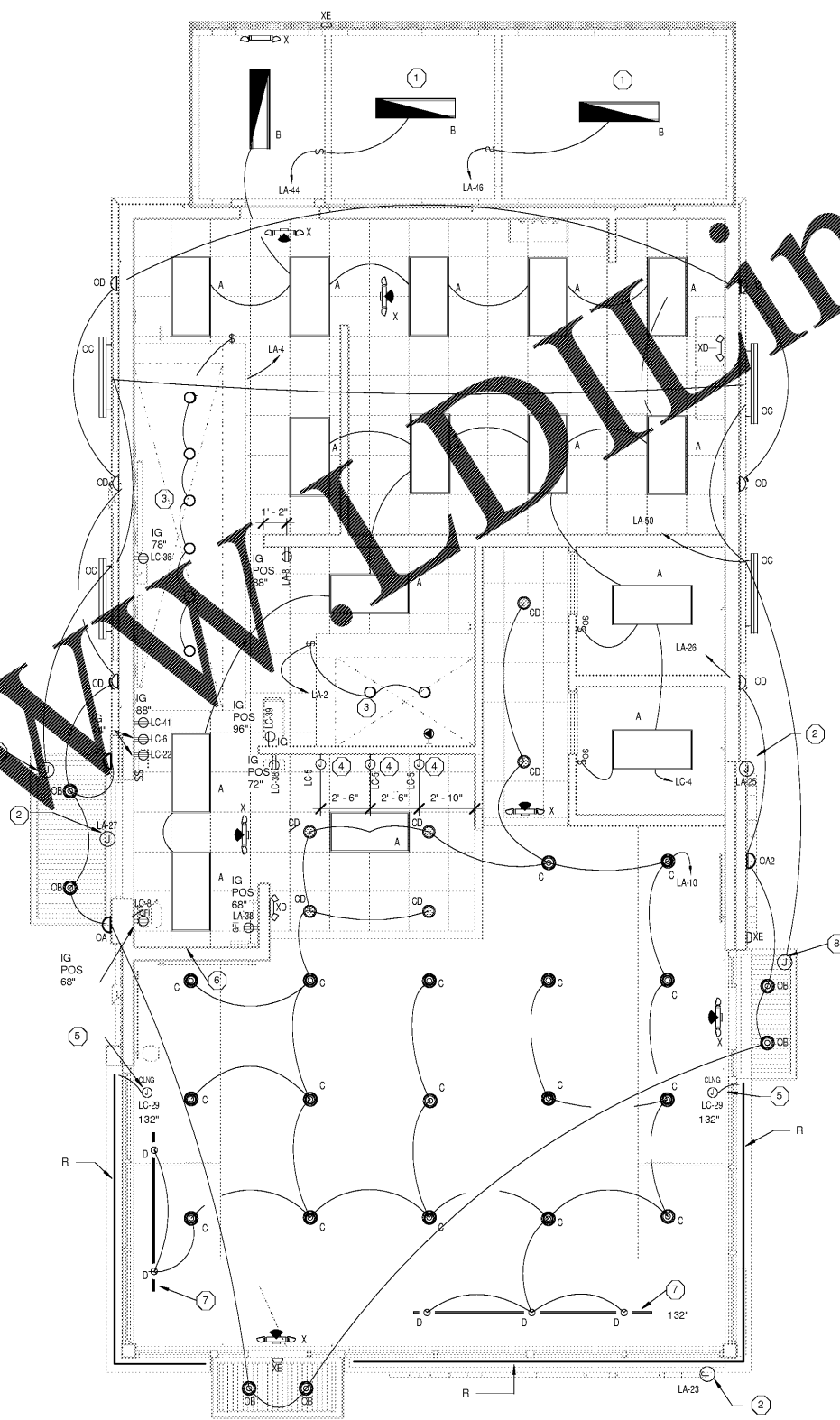
1. ALL EMERGENCY/EGRESS FIXTURES SHALL BE CONNECTED TO LOCAL CIRCUIT SERVING RESPECTIVE AREA AND AHEAD OF ALL CONTROLS.
2. THE ELECTRICAL CONTRACTOR IS RESPONSIBLE FOR PROVIDING 0-10V CONDUCTORS FROM DIMMER SWITCHES TO ALL 0-10V LIGHTING AS REQUIRED.
3. ALL LIGHTS LOCATED WITHIN WORK AREAS SHALL BE EQUIPPED WITH INDIVIDUAL SHIELDS OR SHATTERPROOF LAMPS AS REQUIRED BY 15A NCAC 18A-2630.
4. LIGHT FIXTURES SELECTED BY OTHER SHALL MEET THE REQUIRED 50 FOOTCANDLE REQUIREMENTS IN THE KITCHEN, STAIRS AND WALK-IN COOLER AREAS.



- NOTES:**
1. SURFACE MOUNTED J-BOX SHALL BE MOUNTED TO STRUCTURE. CONDUIT(S) SHALL BE CONCEALED WHERE POSSIBLE FROM VIEW OF GUESTS. CONDUITS SHALL BE RAN ON TOP OF STRUCTURE WHERE POSSIBLE AND TURN DOWN INTO JUNCTION BOXES.
 2. COORDINATE STEM LENGTH WITH LUMINAIRE PRIOR TO ORDERING. B.O. OF FIXTURE SHALL BE AT B.O. OF TRUSS AT 12'-6"

2 FIXTURE TYPE 'C' MOUNTING DETAIL
 1/2" = 1'-0"

LIGHTING FIXTURE SCHEDULE					
TYPE	DESCRIPTION	MOUNTING	NUMBER AND TYPE OF LAMPS	MANUFACTURER AND CATALOG #	ACCESSORIES AND REMARKS
A	2'x4' LONG LED TROFFER	LAY IN GRID CEILING	6000 LUMENS, 1-LED, 3500K	METALUX 24 FP SERIES	LED FLAT PANEL PROVIDING SURFACE MOUNT TRIMMER KIT FOR RESTROOM FIXTURES 58W TOTAL
B	1'x4' LONG LED TROFFER	SURFACE MOUNT CEILING	6000 LUMENS, 1-LED, 4000K	KASON 1810LX LED	FIXTURE SHALL BE SEALED & COVERED WITH ACRYLIC RIBBED & FROSTED DIFFUSER. COORDINATE MOUNTING WITH SIGN VENDOR PRIOR TO ROUGH-IN WORK. 58W TOTAL.
C	6" CYLINDER LED DOWNLIGHT	SUSPENDED CEILING	2000 LUMENS, 1-LED, 3500K	GOTHAM EVO CYL 35/20 6AR SERIES	6" SUSPENDED LED CYLINDER. VERIFY FINISH COLOR. CLEAR REFLECTOR WITH SEMI-SPECULAR FINISH. 23.2W TOTAL.
CD	6" LED DOWNLIGHT	RECESSED CEILING	2000 LUMENS, 1-LED, 3500K	GOTHAM EVO 35/20 6AR SERIES	6" RECESSED LED CLEAR REFLECTOR WITH SEMI-SPECULAR FINISH. 23.2W TOTAL.
D	TRACK HEAD/ SYSTEM	SURFACE MOUNT CEILING	2000 LUMENS, 1-LED, 3500K PAR30 LAMP	JUNIPER LIGHTING T2830 TRACK HEAD	TRACK HEAD/ TRACK HEAD. VERIFY HEAD QUANTITY AND SELECT TRACK LENGTH TO CORRESPOND. VERIFY FINISH WITH ARCHITECT/OWNER. TRACK AVAILABLE IN 4', 8', AND 12'. 29W/HEAD.
R	EXTERIOR LED FLEX LIGHT	CLIP MOUNTED	LED FLEX	SLONE LUMEN LED WITH 1.5" (W/ WARM WHITE)	SIGN COMPANY TO PROVIDE AND INSTALL. PROVIDED WITH WHITE MOUNTING CHANNEL. TOTAL FIXTURE WATTAGE: 5.4W PER 50FT. CONTRACTOR PROVIDE ELECTRICAL PROVISIONS.
OA	UL LISTED 6" TWO LIGHT OUTDOOR WALL SCONCE	SURFACE MOUNT WALL	1-A19 RETROFIT LED, 3000K	SEAGULL LIGHTING 9313902-753	SUITABLE FOR WET LOCATION. PROVIDE 2 MEDIUM A19 RETROFIT LAMPS. 17W MAX. DOWN LIGHT OPTION ONLY.
OA2	UL LISTED 6" TWO LIGHT OUTDOOR WALL SCONCE	SURFACE MOUNT WALL	2-A19 RETROFIT LED, 3000K	SEAGULL LIGHTING 9313902-753	SUITABLE FOR WET LOCATION. PROVIDE 2 MEDIUM A19 RETROFIT LAMPS. 17W MAX. DOWN AND UP LIGHTING OPTION.
OB	6" CYLINDER DOWNLIGHT	VERIFY	1500 LUMENS, 1-LED, 3500K	GOTHAM EVO CYL 6 SERIES	CLEAR REFLECTOR WITH SEMI-SPECULAR FINISH. ARCHITECT SHALL VERIFY TRIM COLOR & FINISH AND MOUNTING PRIOR TO ORDERING. UL LISTED FOR WET LOCATION. 19W TOTAL.
OC	EXTERIOR HORIZONTAL WALL GRAZER	SEE POLE BOX VENDOR DETAIL	1-LED, 3500K	CAPITAL SIGNS & AWNINGS LLC. Z-LIGHT - Z-ULTRA-SLN72-65K UL 1P-66	UL LISTED MURAL LIGHTING. COORDINATE POWER SUPPLY LOCATION WITH DETAIL. 12V - 60W - 1.1 AMP.
OD	UL LISTED SQUARE UP/DN OUTDOOR WALL SCONCE	SURFACE MOUNT WALL	2-10W LUMEN DRIVER LED, 3000K	LIGHTING Q2LU-SERIES	SUITABLE FOR WET LOCATION. COORDINATE MOUNTING LOCATION WITH ARCHITECTURAL ELEVATIONS TO ANY ROUGH-IN WORK. 30W MAX TOTAL.
X	COMBO EMERGED EXIT SIGN	UNIVERSAL WALL MOUNTED	2-2" LAMPS	LITHONIA QM LED SERIES	POLYCARBONATE HOUSING WITH SELF-CONTAINED POWERPACK FOR 90MIN OPERATION. NICAD BATTERY. BLACK HOUSING. RED LETTERS. (VERIFY COLOR WITH ARCHITECT/INTERIORS)
XD	EMERGENCY LIGHT	SURFACE MOUNT	2-2" LAMPS	LITHONIA QM LED SERIES	WALL MOUNTED SELF-CONTAINED EMERGENCY LIGHT POLYCARBONATE HOUSING WITH SELF-CONTAINED POWER PACK FOR 90MIN OPERATION.
YE	EXTERIOR EMERGENCY LIGHT	SURFACE MOUNT WALL	TWO LAMPS INCLUDED	LITHONIA AFN SERIES	EXTERIOR EMERGENCY LIGHT WITH BATTERY BACKUP. TWO LAMPS AND UL WET LABEL. VERIFY FINISH. 90 MINUTE EMERGENCY BATTERY BACKUP
Y	SINGLE HEAD METAL HALIDE CUT LIGHT FIXTURE	POLE MOUNTED (25FT) ON DIRECT BURRY FIBERGLASS POLE	1-315W, 4000K, 200V, FURNISHED W/FIX.	GALLEON (COOPER LIGHTING): 315W LED GAN-AE-6-LED-U-74FT-BZ-ADJS ALLIANCE POLE: DS38WSDS2	PROVIDE BRONZE FINISH ON FIXTURE & POLE. SEE POLE DETAIL SHEET ES1.1 TOTAL FIXTURE WATTAGE SHALL BE 240. TOTAL LIGHT LUMENS 21,120.
YY	DUAL HEAD METAL HALIDE CUT LIGHT FIXTURE	POLE MOUNTED (25FT) ON DIRECT BURRY FIBERGLASS POLE	1-315W, 4000K, 200V, FURNISHED W/FIX.	GALLEON (COOPER LIGHTING): 315W LED GAN-AE-6-LED-U-SMG-BZ-ADJS ALLIANCE POLE: DS38WSDS2	PROVIDE BRONZE FINISH ON FIXTURE & POLE. SEE POLE DETAIL SHEET ES1.1 TOTAL FIXTURE WATTAGE SHALL BE 480. TOTAL LIGHT LUMENS 42,240.



1 LIGHTING PLAN
 1/4" = 1'-0"