



Ragana Architecture & Design, PLLC
1477 Park Road, Charlotte, NC 28209
704.375.0116 www.rad-arct.com

WAVE ENGINEERING
122 W. BLAND ST., SUITE C
CONYERS, GA 30012
706-236-1728
HWAVE@WAVEENGINEERING.COM
WAVE PROJECT # 18028

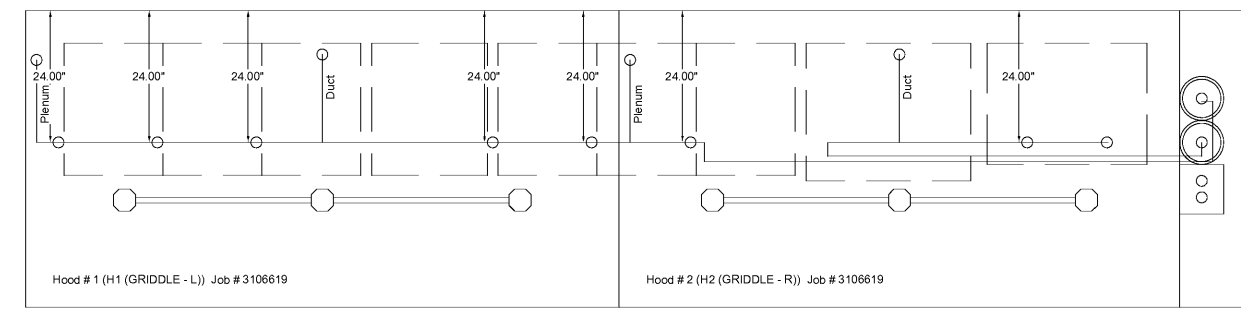
#ATL034
CONYERS, GA



3/22/18

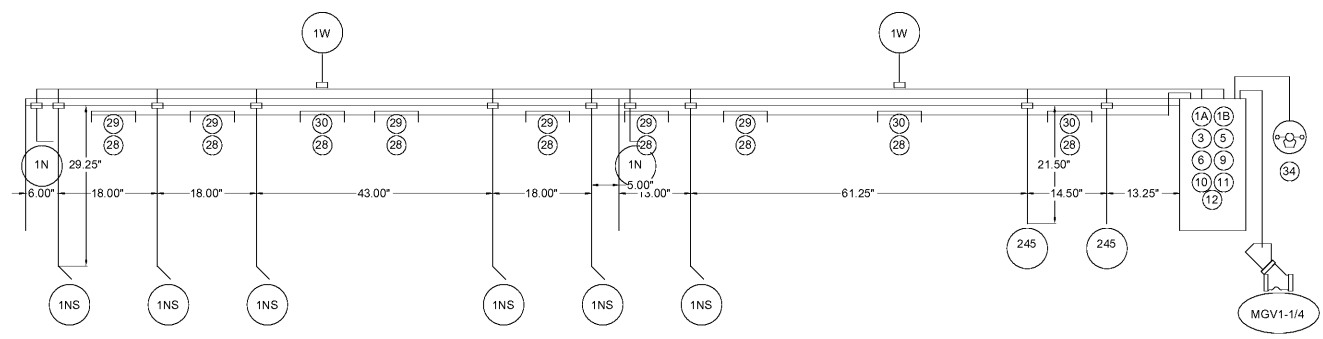
ISSUED FOR
CONSTRUCTION
1447 Highway 138
Conyers, Georgia 30012
Rockdale County, Georgia

Revisions		
#	Date	Description



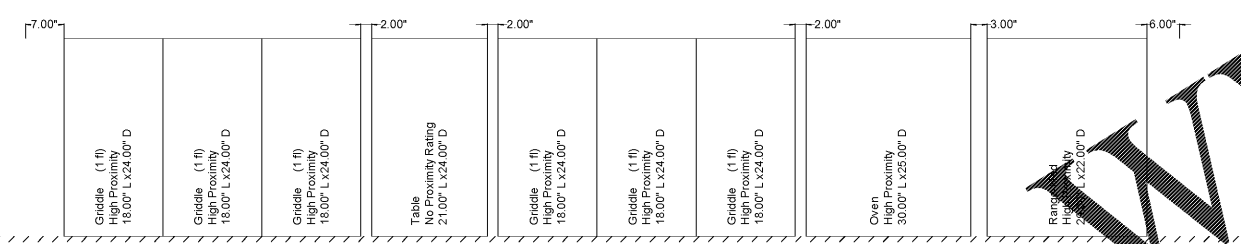
Job #: 3106619
Job Name: Krystal Cordova TN
Drawn By:
System Size: ANSUL-3.0/1.5 Total FP required: 14
Hood # 1 9' 0.00" Long x 54" Wide x 24" High
Riser # 1 Size: 14" Dia.
Hood # 1 Metal Blow-Off Caps included.
Hood # 2 8' 6.00" Long x 54" Wide x 24" High
Riser # 1 Size: 14" Dia.
Hood # 2 Metal Blow-Off Caps included.

- NOTES
- FIELD PIPE DROPS AS SHOWN
 - SLEEVING, ELBOWS, TEES, AND NOZZLES SUPPLIED BY CAS
 - RELOCATE NOZZLES IF FLOW PATTERN IS BLOCKED BY SHELVING, SALAMANDERS, ETC.
 - MAXIMUM 9 ELBOWS IN SUPPLY LINE.
 - MINIMUM 72 INCHES OF AGENT LINE FROM TANK TO FIRST NOZZLE.
 - IF APPLICABLE, PRE-PIPED CHARBROILER DROPS ARE SHIPPED LOOSE.
 - FACTORY PIPING EXTENDS A MAXIMUM OF 6" ABOVE THE TOP OF THE HOOD.
- APPLIANCE DIMENSIONS LISTED REPRESENT THE COOKING SURFACE SIZE, NOT THE OVERALL APPLIANCE SIZE.
- THIS FIRE SYSTEM COMPLIES WITH U. L. 300 REQUIREMENTS



- LEGEND - FIRE CABINET ANSUL SYSTEM
- 1A 1.5 GALLON TANK
 - 1B 3 GALLON TANK
 - 2 OEM AUTOMAN RELEASE
 - 3 OEM REGULATED RELEASE
 - 4 OEM REGULATED ACTUATOR
 - 5 ANSULEX LIQUID AGENT (NEUTRAL)
 - 6 ANSULEX LIQUID AGENT (ACID)
 - 7 CARTRIDGE (101-20)
 - 8 CARTRIDGE (101-10)
 - 9 CARTRIDGE (101-30)
 - 9A CARTRIDGE (LT-A-101-30)
 - 9B DOUBLE TANK CARTRIDGE
 - 10 FUSIBLE LINK
 - 11 FUSIBLE LINK MICROSWITCH
 - 12 FUSIBLE LINK
 - 13 DETECTOR BRACKET
 - 14 DETECTOR BRACKET
 - 15 DETECTOR BRACKET
 - 16 DETECTOR BRACKET
 - 17 DETECTOR BRACKET
 - 18 DETECTOR BRACKET
 - 19 DETECTOR BRACKET
 - 20 DETECTOR BRACKET
 - 21 DETECTOR BRACKET
 - 22 DETECTOR BRACKET
 - 23 DETECTOR BRACKET
 - 24 DETECTOR BRACKET
 - 25 DETECTOR BRACKET
 - 26 DETECTOR BRACKET
 - 27 DETECTOR BRACKET
 - 28 DETECTOR BRACKET
 - 29 DETECTOR BRACKET
 - 30 DETECTOR BRACKET
 - MGV MECHANICAL GAS VALVE
 - EGV ELECTRICAL GAS VALVE
 - 34 REMOTE MANUAL PULL STATION
 - S SWIVEL ADAPTOR

INCLUDES: FIELD INSTALLATION AND HOOKUP DURING NORMAL BUSINESS HOURS BY CERTIFIED INSTALLERS ONLY IN THE LOCATION NOTED ABOVE. TWO SITE VISITS ONLY (ONE VISIT TO SET PULL STATION & SYSTEM HOOKUP AND ONE VISIT FOR ONE TEST; ADDITIONAL VISITS WILL RESULT IN ADDITIONAL CHARGES). ONE MECHANICAL GAS VALVE PER SYSTEM AT A MAXIMUM SIZE OF 2". PERMIT, AND SYSTEM TEST.
EXCLUDES: UNION LABOR & PREVAILING WAGE (LABOR & WAGES WILL BE ADDED IF APPLICABLE), GAS VALVE INSTALLATION, ELECTRICAL HOOKUP AND CONNECTIONS, HANGING OF FIRE CABINET, SHUNT TRIP, HANDHELD EXTINGUISHER(S), ON-SITE RE-PIPING DUE TO EQUIPMENT LAYOUT CHANGES.



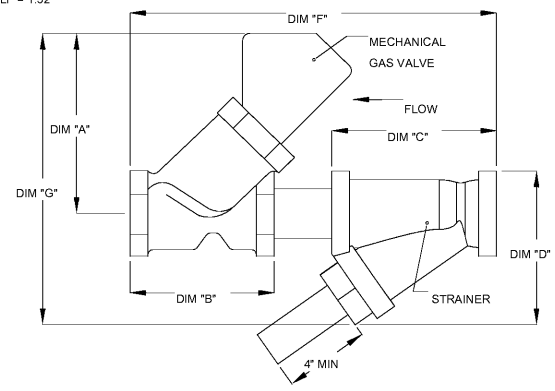
www.LDILine.com

GAS VALVES AND STRAINERS																
GAS VALVE SIZING				GAS VALVE DIMENSIONS						INSTALLATION			PART NUMBERS			
TYPE	SIZE	VOLTAGE	MIN. INLET PRESSURE	MAX. INLET PRESSURE	FLOW AT 1 IN W.C. DROP NATURAL GAS	FLOW AT 1 IN W.C. DROP PROPANE	DIM "A"	DIM "B"	DIM "C"	DIM "D"	DIM "E"	DIM "G"	MOUNTING ORIENTATION	GAS VALVE PART NUMBER	STRAINER PART NUMBER	GAS VALVE/STRAINER KIT
GAS VALVE FOR FS#1	MECHANICAL	1-1/4"	N/A	10 PSI (0 IN.W.C.)	1,718,000 BTU/HR	1,114,786 BTU/HR	6-3/8"	4-7/8"	5-1/8"	5-15/16"	12"	10-3/4"	HORIZONTAL	26-55604	4417K66	MGVA1-1/4

ELECTRIC GAS VALVES ONLY
3/4" THROUGH 2" VALVES CAN BE MOUNTED WITH THE SOLENOID IN ANY POSITION ABOVE HORIZONTAL.
2-1/2" THROUGH 3" VALVES MUST BE MOUNTED WITH THE SOLENOID VERTICAL AND UPRIGHT.

ALL GAS VALVES/STRAINERS
PROPER CLEARANCE MUST BE PROVIDED IN ORDER TO SERVICE THE STRAINERS A MINIMUM OF 4" CLEARANCE DISTANCE MUST BE PROVIDED AT THE BASE OF THE STRAINER CUSTOMER MUST VERIFY BTU CONSUMPTION AS WELL AS PRESSURE RATING SPECIFIC GRAVITY OF NATURAL GAS = 0.64, SPECIFIC GRAVITY OF LP = 1.52

CALCULATIONS
TO CALCULATE GAS FLOW FOR OTHER THAN 1 IN W.C. PRESSURE DROP
NEW BTU/HR = (BTU/HR AT 1 IN W.C. PRESSURE DROP) X NEW PRESSURE DROP^{0.5}
TO CALCULATE GAS FLOW FOR OTHER THAN 0.64 SPECIFIC GRAVITY
NEW BTU/HR = (BTU/HR AT 0.64) X (0.64 / NEW SPECIFIC GRAVITY)^{0.5}



Order Plans @

Project Number: 18028
Issued for: CONSTRUCTION
Issue Date: 03/22/18

DRAWING TITLE
HOOD DRAWINGS

SHEET NUMBER
M303