



Ragana Architecture & Design, PLLC
1477...
0118...
www.rad-arch.com

WAVE ENGINEERING
122 W. BLAND ST. SUITE C
CONYERS, GA 30209
909-236-7729
INFO@WAVEENGINEERING.COM
WAVE PROJECT # 19072

#ATL034
CONYERS, GA



3/22/18

ISSUED FOR
CONSTRUCTION
1447 Highway 138
Conyers, Georgia 30012
Rockdale County, Georgia

Revisions		
#	Date	Description

Project Number: 19028
Issued for: CONSTRUCTION
Issue Date: 03/22/18

DRAWING TITLE
**MECHANICAL
ROOF AND
EXHAUST PLAN**

SHEET NUMBER
M101

HOOD INFORMATION -
Job#3227534

HOOD NO.	TAG	MODEL	LENGTH	MAX. COOKING TEMP.	TOTAL EXH. CFM	EXHAUST PLENUM RISER(S)				TOTAL SUPPLY CFM	HOOD CONSTRUCTION	HOOD CONFIG.				
						WIDTH	LENG.	HEIGHT	DIA.			CFM	VEL.	S.P.	END TO END	ROW
1	H1 (GRIDDLE - L)	5424 ND-2-PSP-F	9' 0"	600 Deg	1800			4"	14"	1800	1684	-0.444"	1440	430 SS Where Exposed	LEFT	ALONE
2	H2 (GRIDDLE - R)	5424 ND-2-PSP-F	8' 6"	600 Deg	1700			4"	14"	1700	1590	-0.414"	1360	430 SS Where Exposed	RIGHT	ALONE
3	FRYER	5424 ND-2-PSP-F	7' 0"	600 Deg	1400			4"	12"	1400	1783	-0.413"	1134	430 SS Where Exposed	ALONE	ALONE

HOOD INFORMATION

HOOD NO.	TAG	TYPE	FILTER(S)			LIGHT(S)			WIRE GUARD	LOCATION	UTILITY CABINET(S)			FIRE SYSTEM PIPING	HANGING WGT		
			QTY.	HEIGHT	LENGTH	EFFICIENCY @ 7 MICRONS	QTY.	TYPE			SIZE	TYPE	SIZE			ELECTRICAL MODEL #	SWITCHES QUANTITY
1	H1 (GRIDDLE - L)	SS Baffle with Handles	6	16"	16"	30%	3	L55 Series E26	NO					YES	503 LBS		
2	H2 (GRIDDLE - R)	SS Baffle with Handles	6	16"	16"	30%	3	L55 Series E26	NO	Right	12"x54"x24"	Ansul R102	3.0/1.5	DCV-3111	1 Fan	YES	LBS
3	FRYER	SS Baffle with Handles	5	16"	16"	30%	2	L55 Series E26	NO	Right	12"x54"x24"	Ansul R102	3.0/3.0			YES	548 LBS

HOOD OPTIONS

HOOD NO.	TAG	OPTION
1	H1 (GRIDDLE - L)	FIELD WRAPPER 18.00" High Front, Left BACKSPLASH 122.00" High X 258.00" Long 430 SS Vertical LEFT QUARTER END PANEL 23" Top Width, 0" Bottom Width, 23" High 430 SS
2	H2 (GRIDDLE - R)	FIELD WRAPPER 18.00" High Front, Right RIGHT QUARTER END PANEL 23" Top Width, 0" Bottom Width, 23" High 430 SS
3	FRYER	FIELD WRAPPER 18.00" High Front, Left, Right BACKSPLASH 122.00" High X 114.00" Long 430 SS Vertical LEFT QUARTER END PANEL 23" Top Width, 0" Bottom Width, 23" High 430 SS RIGHT QUARTER END PANEL 23" Top Width, 0" Bottom Width, 23" High 430 SS SENSOR-CV

PERFORATED SUPPLY PLENUM(S)

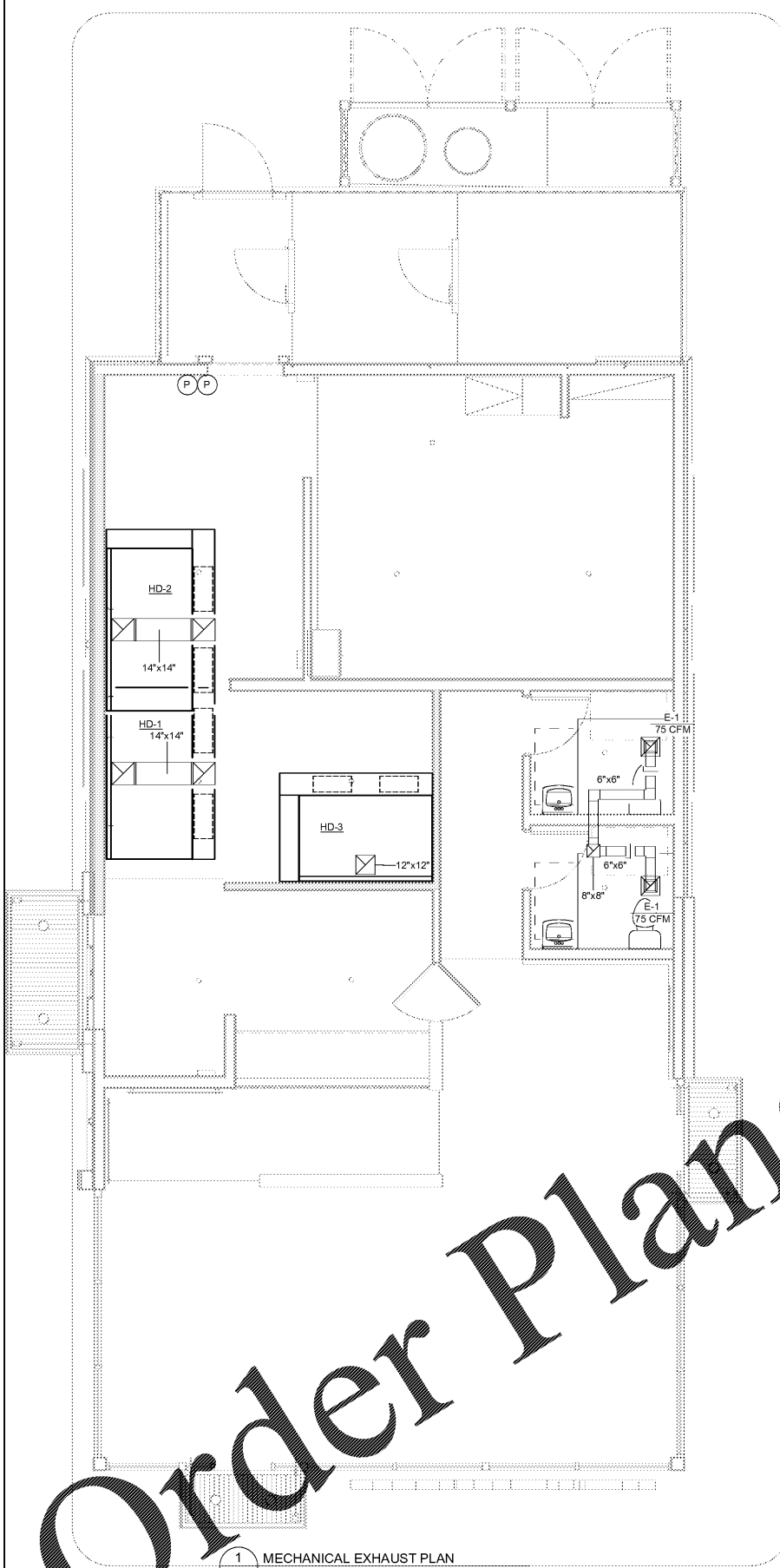
HOOD NO.	TAG	POS.	LENGTH	WIDTH	HEIGHT	TYPE	RISER(S)				
							WIDTH	LENG.	DIA.	CFM	S.P.
1	H1 (GRIDDLE - L)	Front	108"	14"	6"	MUA	12"	28"		720	0.168"
							12"	28"		720	0.168"
2	H2 (GRIDDLE - R)	Front	114"	14"	6"	MUA	12"	28"		680	0.175"
							12"	28"		680	0.175"
3	FRYER	Front	96"	14"	6"	MUA	10"	24"		567	0.175"
							10"	24"		567	0.175"

System Design Verification (SDV)

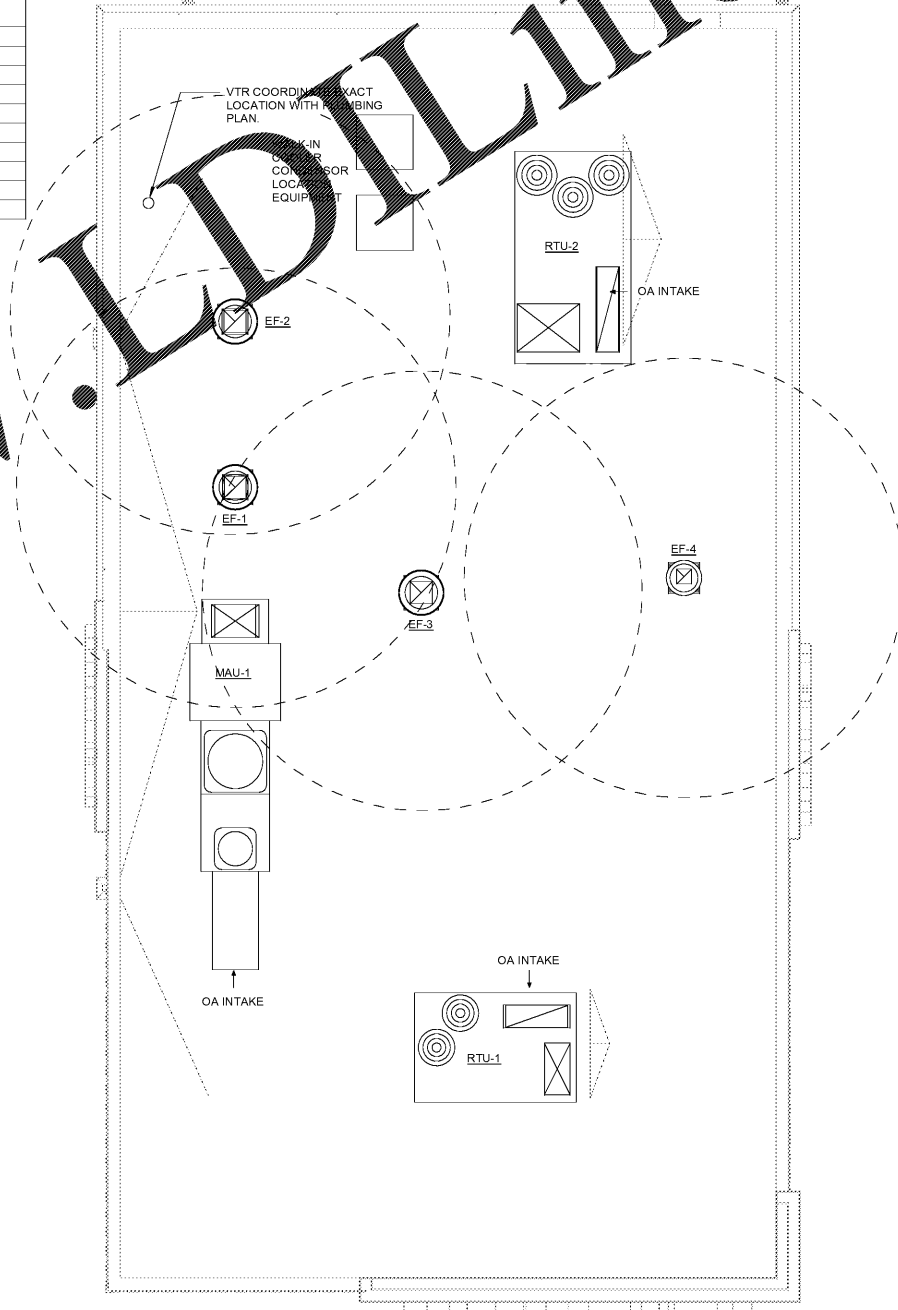
If ordered, CAS Service will perform a System Design Verification (SDV) once all equipment has had a complete start up per the Operation and Installation Manual. Typically, the SDV is performed after all inspections are complete.

Any field related discrepancies that are discovered during the SDV will be brought to the attention of the general contractor and corresponding trades on the same issues will be documented and forwarded to the appropriate sales office. If CAS Service has resolved a discrepancy that is a field issue, the general contractor will be billed for the work. Should a return trip be required due to a field related discrepancy that cannot be resolved during the SDV, there will be additional charges.

During the SDV, CAS Service will address any discrepancy that is the fault of the manufacturer. Should a return trip be required, the general contractor and appropriate sales office will be notified. There will be no additional charges for manufacturer discrepancies.



1 MECHANICAL EXHAUST PLAN
M101 1/4" = 1'-0"



2 MECHANICAL ROOF PLAN
M101 1/4" = 1'-0"