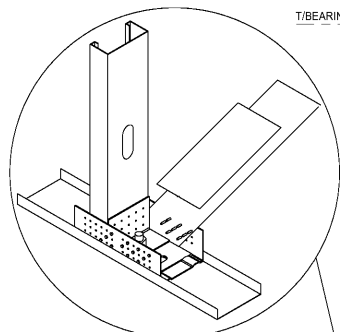
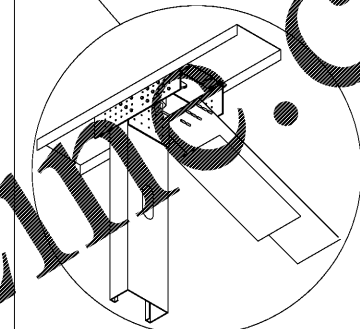


1 TYPICAL SHEARWALL PANEL NAILING
NO SCALE



2 SINGLE STACK SHEAR WALL
3/4" = 1'-0"

CONNECTION TO FOUNDATION: (1) 7/8" MECHANICAL ANCHOR
EMBEDMENT DEPTH: 7.875"
STRAP TRACK SCREWS: (6) #12 SCREWS PER STRAP



3 SHEARWALL SCHEDULE

SHEARWALL MARK (NOTE 1)	PANEL NAILING (NOTE 2)			BLOCKING REQUIRED (NOTE 3)	QUANTITY AND TYPE OF HOLD DOWN OR STRAP TIE AT EACH END (NOTE 4)	# OF END POSTS (NOTE 5)	SILL PLATE ANCHOR BOLTS (A36) (NOTE 6)
	NAIL SIZE	EDGE SUPPORT NAIL SPACING	INTERMEDIATE SUPPORT NAIL SPACING				
SW1	8d	3" O.C.	12" O.C.	YES	(1) HHQ14-SDS2.5	5	1" - @ 16" O.C.
SW2	8d	6" O.C.	12" O.C.	YES	(1) HDQ8-SDS3	3	3/4" - @ 32" O.C.
SW3	8d	6" O.C.	12" O.C.	YES	(1) HDQ8-SDS3	4	3/4" - @ 32" O.C.

SHEARWALL SCHEDULE NOTES:

1. SHEARWALL MARKS ARE SHOWN ON PLAN. EACH MARK REPRESENTS THE DESIGN FOR ONE STORY OF SHEARWALL STARTING FROM THE FLOOR MARK SHOWN - TO THE FLOOR (OR) ROOF ABOVE.

2. ALL EXTERIOR PLYWOOD SHEARWALL CONSTRUCTION IS 7/16" APA SPAN RATED 32/16 SHEATHING ON 1 SIDE OF STUD WALL.

ALL NAILS SHALL BE #4 COMMON WIRE NAILS W/ MINIMUM DIAMETER = 0.131 IN AND MINIMUM PENETRATION INTO MAIN MEMBER = 1.38"

ATTACH EDGE SUPPORT NAILS TO STUDS ALONG ALL FOUR EDGES OF EACH PANEL AT SPACING SHOWN IN SCHEDULE. SEE "TYPICAL SHEARWALL PANEL NAILING" THIS SHEET.

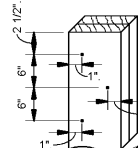
* WHERE EDGE SUPPORT NAILING IS 2" O/C, FRAMING AT ADJOINING PANEL EDGES MUST BE 3" NOMINAL OR WIDER (DOUBLE STUDS) AND NAILS SHALL BE STAGGERED.

3. ALL FOUR SIDES OF EACH PANEL MUST BE CONTINUOUSLY BLOCKED. (TYP.)

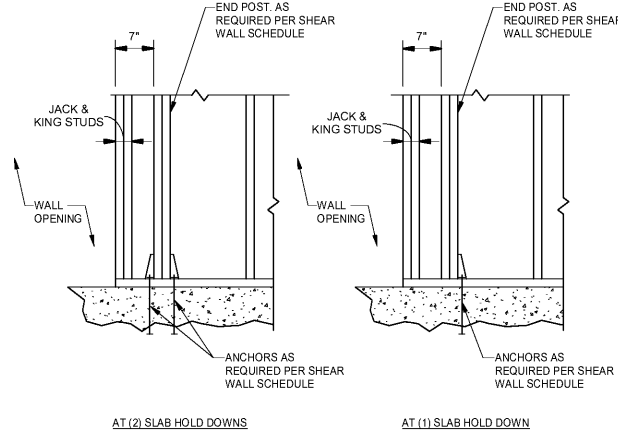
4. ANCHOR BOLTS FOR EACH HOLD DOWN SHALL BE AS FOLLOWS:

HOLD DOWNS	HOLD DOWN ANCHOR BOLTS
HDQ8-SDS3	7/8" DIA. SIMPSON PA87 EMBED = 6"
HHQ14-SDS2.5	1" DIA. SIMPSON PA88 EMBED = 8"

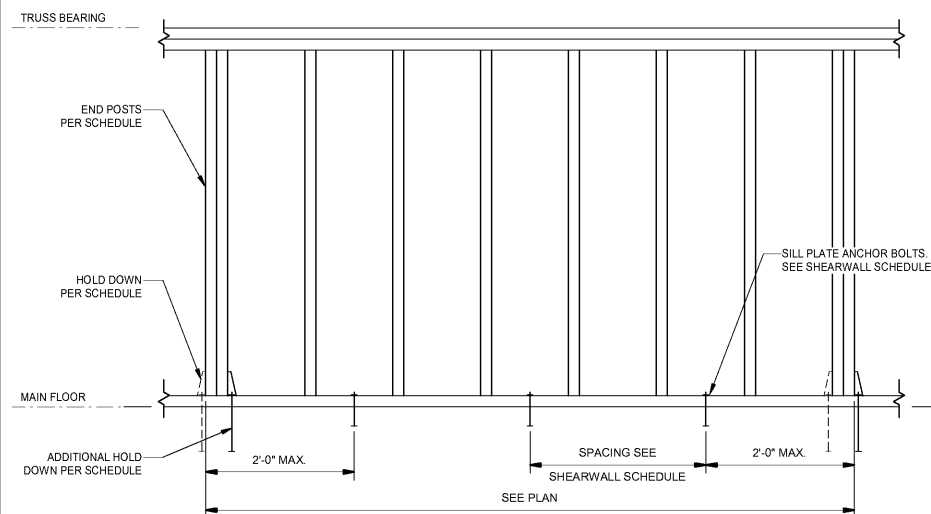
5. ALL END POSTS SHALL BE SPRUCE PINE FIR No. 2. NAILS USED TO BUILD UP STUDS SHALL BE 10d COMMON WIRE NAILS W/ MINIMUM DIAMETER = 0.148 IN. AND MINIMUM LENGTH = 3IN. SEE NAILING SCHEDULE BELOW.



4 SHEARWALL CONNECTION DETAIL
1 1/2" = 1'-0"



5 HOLD DOWN DETAIL AT OPENINGS
NO SCALE

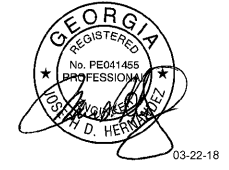


6 TYPICAL SHEARWALL ELEVATION
NO SCALE

COMPONENTS		
COLUMN	BOOT	BRACING
550C / STW250 - 97mil, 50 ksi	LIGHT BOOT	4" x 54 mils FLAT STRAP, Fy = 50 ksi (2) EA. FACE, (4) TOTAL

RAD
Ragana Architecture & Design, LLC
145A Scalesby Road, Charlotte, NC 28209
T. 704.363.1111 www.rad-va.com

JDH STRUCTURAL ENGINEERS, PLLC
1015 GREENTREE WAY, SUITE B
CORNELIUS, NORTH CAROLINA 28031
phone 704.997.7072 fax 980.312.6520
www.jdherenters.com
JDH PROJECT # 180205



#ATL 034
CONYERS, GA



1447 Highway 138
Conyers, Georgia 30012
Rockdale County, Georgia

Revisions		
#	Date	Description

Project Number: 18028
Issued for: CONSTRUCTION
Issue Date: 03-22-18

DRAWING TITLE
TYPICAL DETAILS

SHEET NUMBER
S301