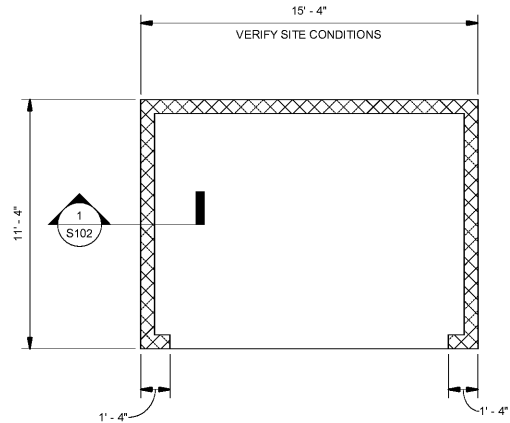
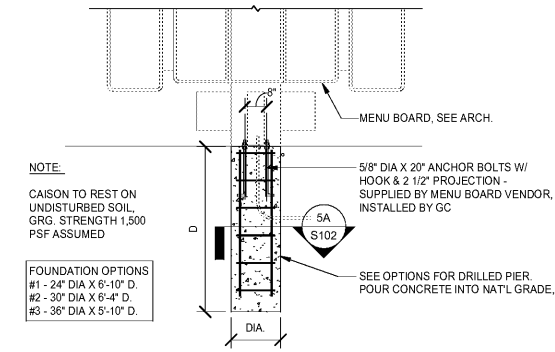


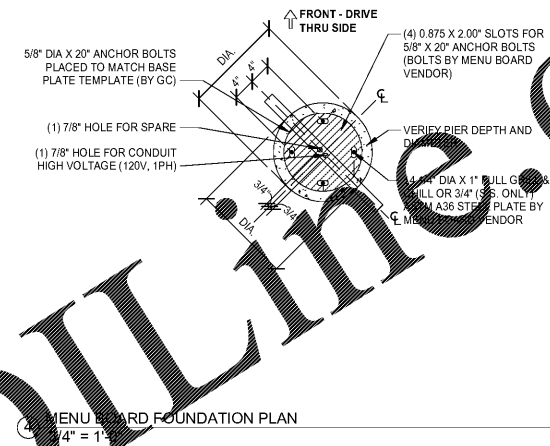
① SECTION AT DUMPSTER ENCLOSURE  
3/4" = 1'-0"



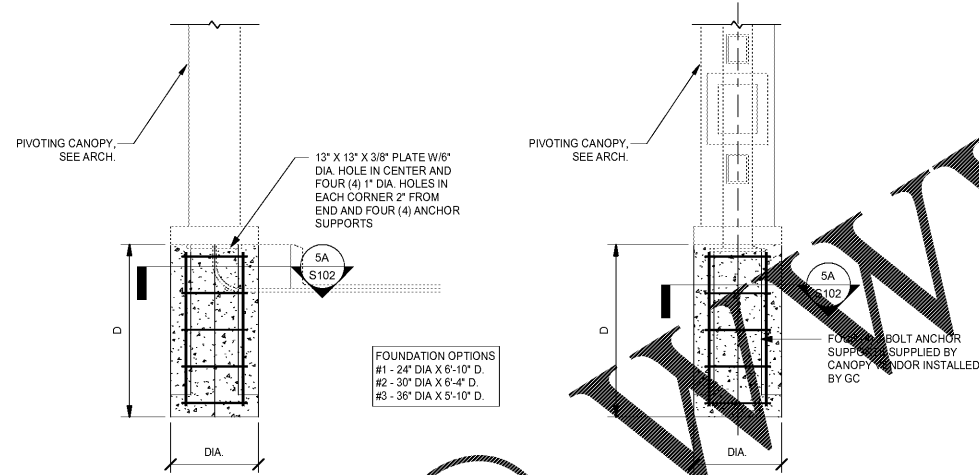
② DUMPSTER ENCLOSURE FOUNDATION PLAN  
1/4" = 1'-0"



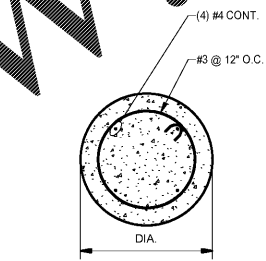
③ MENU BOARD FOUNDATION SECTION  
3/8" = 1'-0"



④ MENU BOARD FOUNDATION PLAN  
3/4" = 1'-0"



⑤ PIVOTING CANOPY SYSTEM FOUNDATION  
1/2" = 1'-0"



⑤A CANOPY FOUNDATION PLAN  
3/4" = 1'-0"

**RAD**

Ragona Architecture & Design, LLC  
145A Scalesville Road, Charlotte, NC 28209  
T. 704.363.1111 www.rad-arch.com

**JDH STRUCTURAL ENGINEERS, PLLC**

1005 GREENTREE WAY, SUITE B  
CORNELIUS, NORTH CAROLINA 28031  
phone 704.997.7072 fax 980.312.6520  
www.jdhestro.com

JDH PROJECT # 180205



#ATL 034  
CONYERS, GA

**Krystal**

1447 Highway 138  
Conyers, Georgia 30012  
Rockdale County, Georgia

Revisions		
#	Date	Description

Project Number: 180205  
Issued for: CONSTRUCTION  
Issue Date: 03-22-18

DRAWING TITLE  
**SITE FOUNDATION DETAILS**

SHEET NUMBER

**S102**

Order Plans @

WWW.LDILLINE.COM