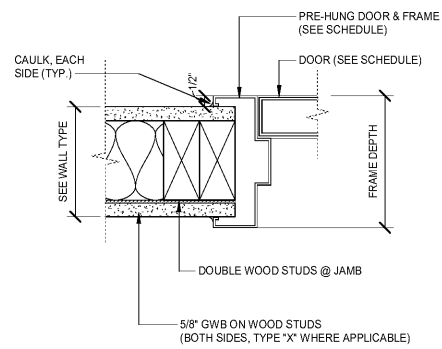
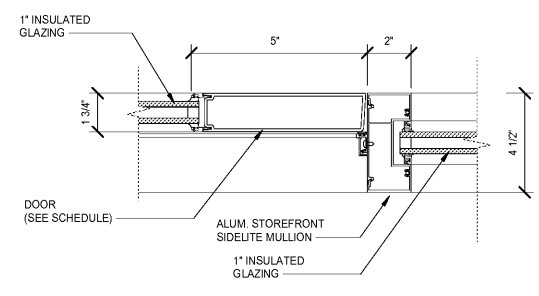


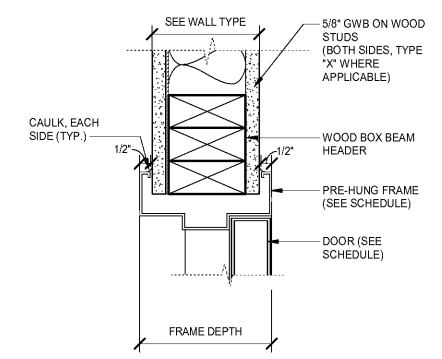
10 DOOR THRESHOLD
 SCALE: 1 1/2" = 1'-0"



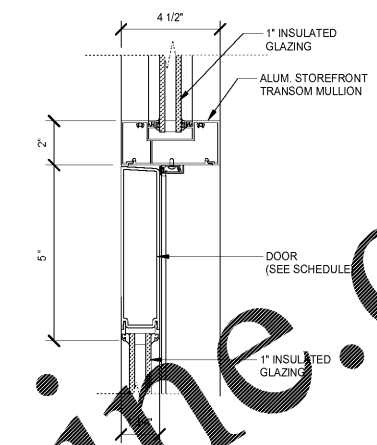
9 DOOR JAMB
 SCALE: 3" = 1'-0"



8 DOOR JAMB
 SCALE: 3" = 1'-0"



7 DOOR HEAD
 SCALE: 3" = 1'-0"



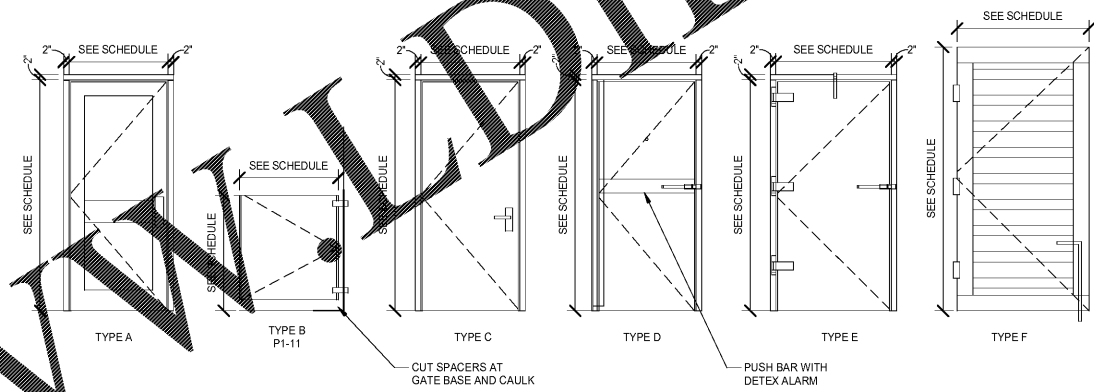
6 DOOR HEAD
 SCALE: 3" = 1'-0"

DOOR SCHEDULE										
DOOR MARK	TYPE	WALL TYPE	DIMENSIONS		DOOR			HARDWARE	COMMENTS	
			WIDTH	HEIGHT	HEAD	JAMB	THRESHOLD			
100A	A	SF	3'-0"	7'-0"	6 / A601	8 / A601	10 / A601	HW-01	YKK STOREFRONT SYSTEM	
100B	A	SF	3'-0"	7'-0"	6 / A601	8 / A601	10 / A601	HW-01	YKK STOREFRONT SYSTEM	
102	C	W1	3'-0"	7'-0"	7 / A601	9 / A601	NA	HW-02	PREHUNG MARLITE 500 SERIES - SEE FINISH SCHEDULE	
103	C	W1	3'-0"	7'-0"	7 / A601	9 / A601	NA	HW-02	PREHUNG MARLITE 500 SERIES - SEE FINISH SCHEDULE	
105	B	W1	3'-0"	3'-4"	-	-	MFG NA	HW-03	ELIASON GATE - P11 PLUS GRAY THERMOPLASTIC	
109	D	KOLPAK	3'-6"	7'-6"	MFG	MFG	10 / A601	HW-04	DOOR PER MANUFACTURER	
110	E	KOLPAK	2'-10"	8'-0"	MFG	MFG	NA	MANUF.	DOOR PER MANUFACTURER	
111	E	KOLPAK	2'-10"	8'-0"	MFG	MFG	NA	MANUF.	DOOR PER MANUFACTURER	
112A	F	EXT GATE	8'-1"	8'-0"	MFG	MFG	NA	MANUF.	PAIR OF GATES / TREX / WITH CANE BOLT	
112B	F	EXT GATE	8'-1"	8'-0"	MFG	MFG	1NA	MANUF.	PAIR OF GATES / TREX / WITH CANE BOLT	

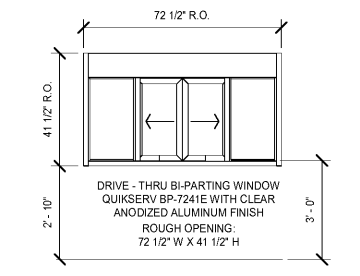
HARDWARE NOTES

- ALL HARDWARE SHALL BE FURNISHED AND INSTALLED BY THE GC UNLESS NOTED OTHERWISE
- ALL LOCKS TO BE SCHLAGE - SUPPLIED AND INSTALLED BY GC. ALL EXTERIOR LOCKS TO BE PROVIDED WITH CONSTRUCTION CORES. ALL PERMANENT CORES TO BE KEYPED ALIKE.
- MOUNT DOOR CLOSERS ON TOILET ROOM SIDE ONLY.

DOOR HARDWARE SCHEDULE	
<p>HW-01: ALUMINUM STOREFRONT</p> <p>QTY. DESCRIPTION</p> <p>1 SET BUTTS 1 EA LOCK 1 EA CLOSER</p> <p>1 EA THRESHOLD 1 EA DOOR STOP 1 EA PUSH/PULL</p> <p>PROVIDE A SIGN STATING THIS DOOR TO REMAIN UNLOCKED DURING BUSINESS HOURS*</p>	<p>HW-03: ELIASON GATE</p> <p>QTY. DESCRIPTION</p> <p>1 SET ELIASON GATE P11 - PLUS EASY SWING HINGE SYSTEM</p>
<p>HW-02: MARLITE PRE-HUNG DOORS</p> <p>QTY. DESCRIPTION</p> <p>1 SET BUTTS 1 EA LOCK 1 EA CLOSER</p> <p>PROVIDE A 3/4" UNDERCUT</p>	<p>HW-04: EXTERIOR DOOR FROM WALK-IN TO EXTERIOR</p> <p>QTY. DESCRIPTION</p> <p>1 EA HINGE 1 EA PEEP HOLE 1 EA JULL 1 EA PUSH 1 EA SEAL</p> <p>HARDWARE BY THE MANUFACTURER</p>



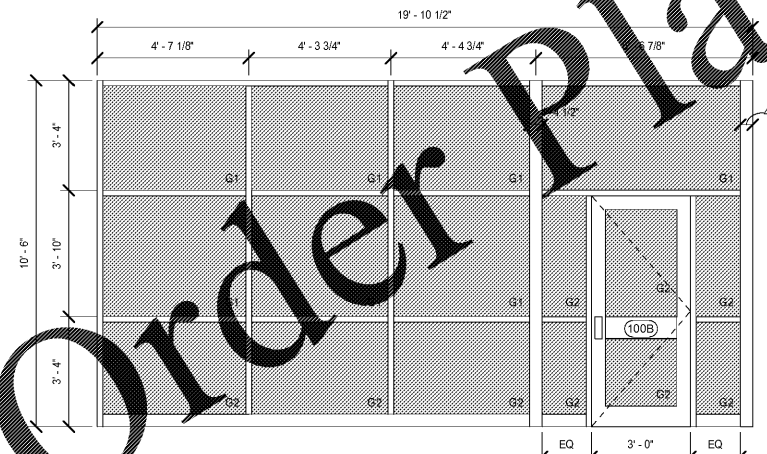
5 DOOR & FRAME TYPES
 SCALE: 3/8" = 1'-0"



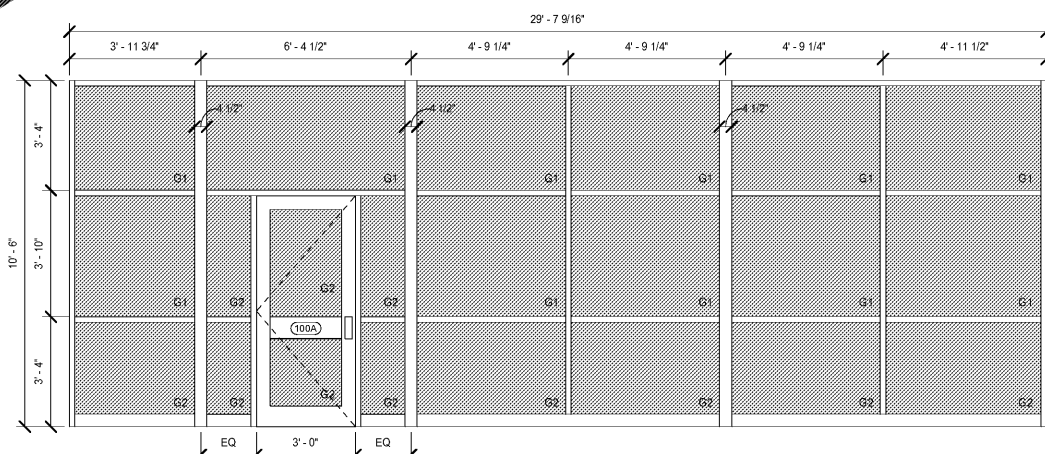
4 WINDOW TYPE D
 SCALE: 3/8" = 1'-0"

GLAZING SCHEDULE	
<p>G1 EXTERIOR STANDARD GLAZING</p> <p>OUTBOARD LITE:</p> <ul style="list-style-type: none"> Glass Type: Clear Float Glass Thickness: 1/4" Strength: Annealed Coating (Low E): Guardian SunGuard SNX 62/27 on Surface #2 <p>AIR SPACE:</p> <ul style="list-style-type: none"> Thickness: 1/2" Gas Fill: Air <p>INBOARD LITE:</p> <ul style="list-style-type: none"> Glass Type: Clear Float Glass Thickness: 1/4" Strength: Annealed 	<p>G2 EXTERIOR TEMPERED GLAZING</p> <p>OUTBOARD LITE:</p> <ul style="list-style-type: none"> Glass Type: Clear Float Glass Thickness: 1/4" Strength: Fully Tempered Safety Glass Coating (Low E): Guardian SunGuard SNX 62/27 on Surface #2 <p>AIR SPACE:</p> <ul style="list-style-type: none"> Thickness: 1/2" Gas Fill: Air <p>INBOARD LITE:</p> <ul style="list-style-type: none"> Glass Type: Clear Float Glass Thickness: 1/4" Strength: Fully Tempered Safety Glass

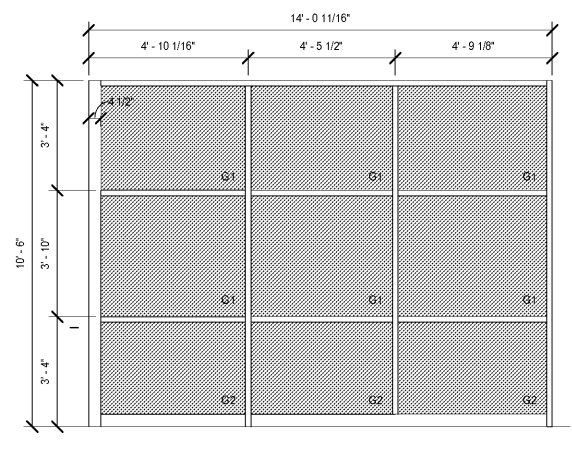
GLASS AND GLAZING SHALL CONFORM WITH THE CURRENT LOCAL CODE(S), AND WITH U.S. CONSUMER PRODUCT SAFETY COMMISSION REQUIREMENTS. GLAZED OPENINGS LESS THAN 18 INCHES ABOVE ADJACENT FLOOR SHALL BE TEMPERED GLASS APPROVED FOR IMPACT HAZARD.



3 WINDOW TYPE C
 SCALE: 3/8" = 1'-0"



2 WINDOW TYPE B
 SCALE: 3/8" = 1'-0"



1 WINDOW TYPE A
 SCALE: 3/8" = 1'-0"

#ATL034
 CONYERS, GA



ISSUED FOR
 CONSTRUCTION

1447 Highway 138
 Conyers, Georgia 30012
 Rockdale County, Georgia

Revisions		
#	Date	Description

Project Number: 18028
 Issued for: CONSTRUCTION
 Issue Date: 03/22/18

DRAWING TITLE
DOOR & WINDOW SCHEDULES

SHEET NUMBER
A601