

#ATL034  
 CONYERS, GA

**Krystal**

ISSUED FOR  
 CONSTRUCTION

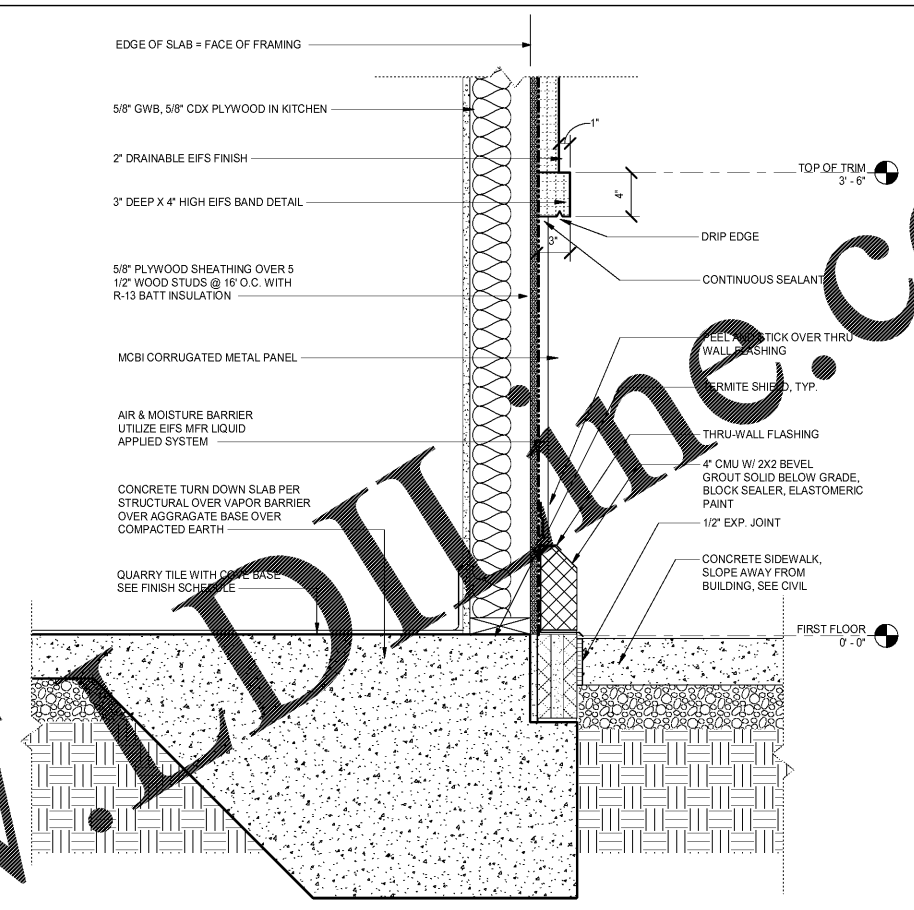
1447 Highway 138  
 Conyers, Georgia 30012  
 Rockdale County, Georgia

Revisions		
#	Date	Description

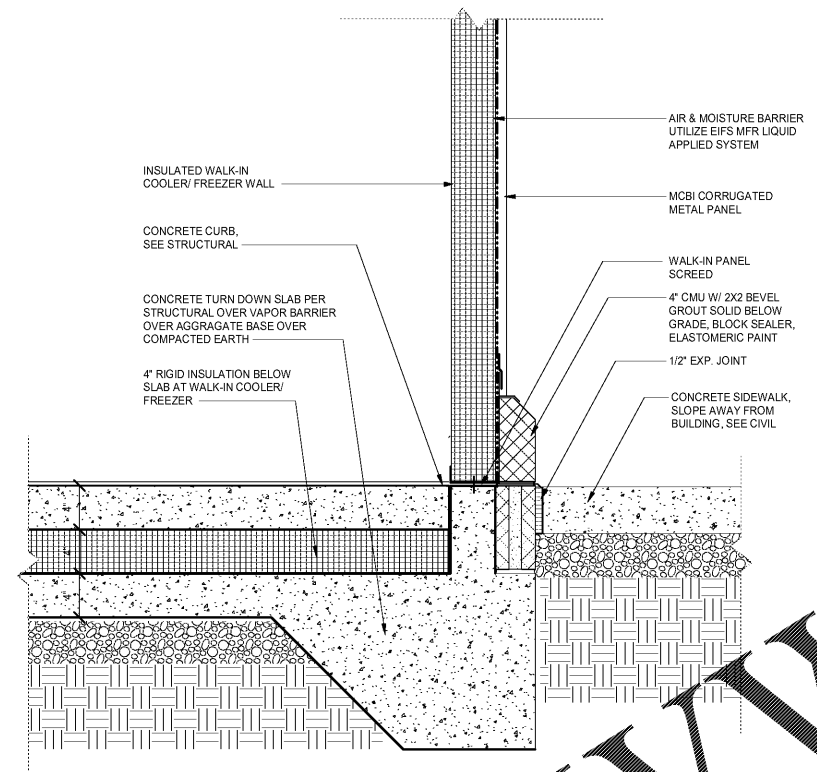
Project Number: 18028  
 Issued for: CONSTRUCTION  
 Issue Date: 03/22/18

DRAWING TITLE  
**SECTION DETAILS**

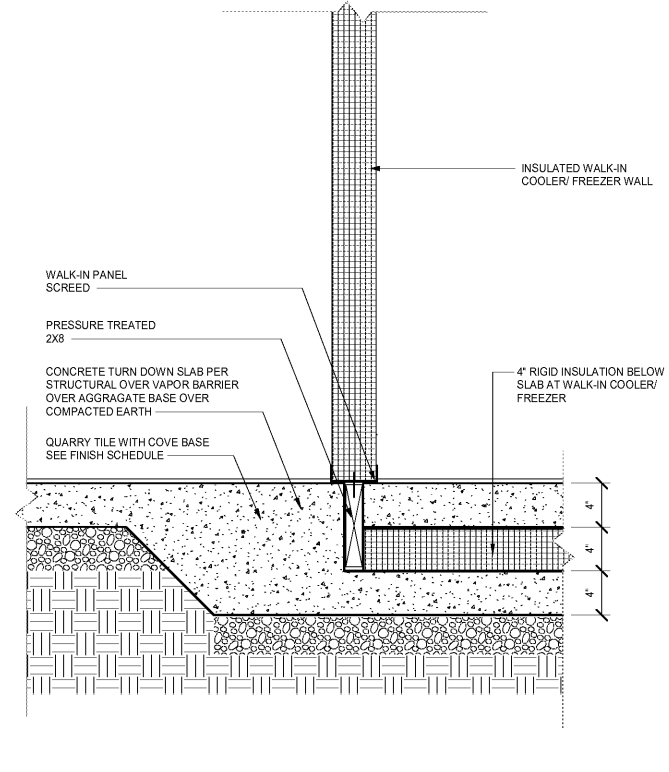
SHEET NUMBER  
**A504**



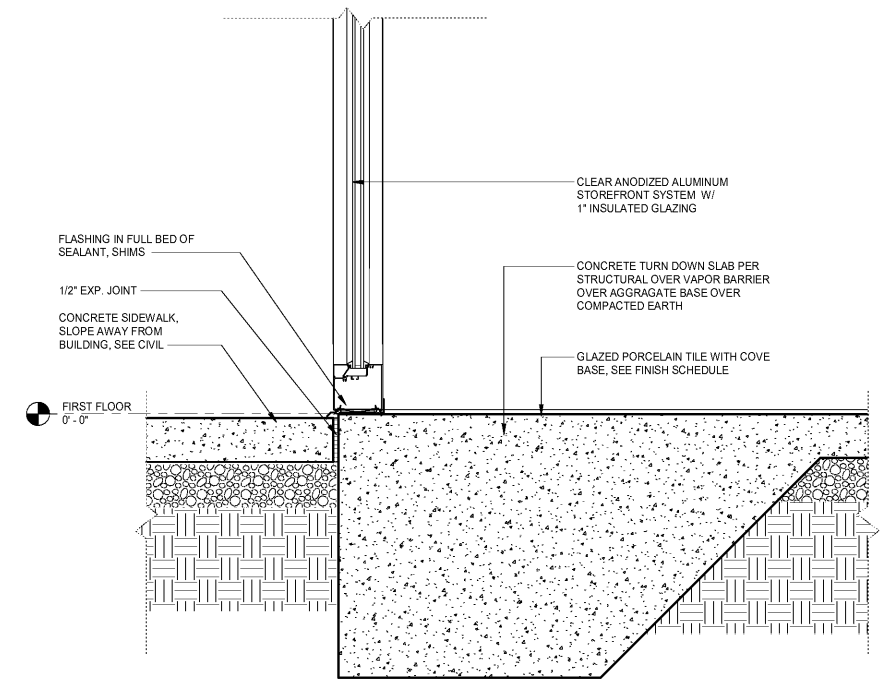
**2** DETAIL - FOOTING  
 SCALE: 1 1/2" = 1'-0"



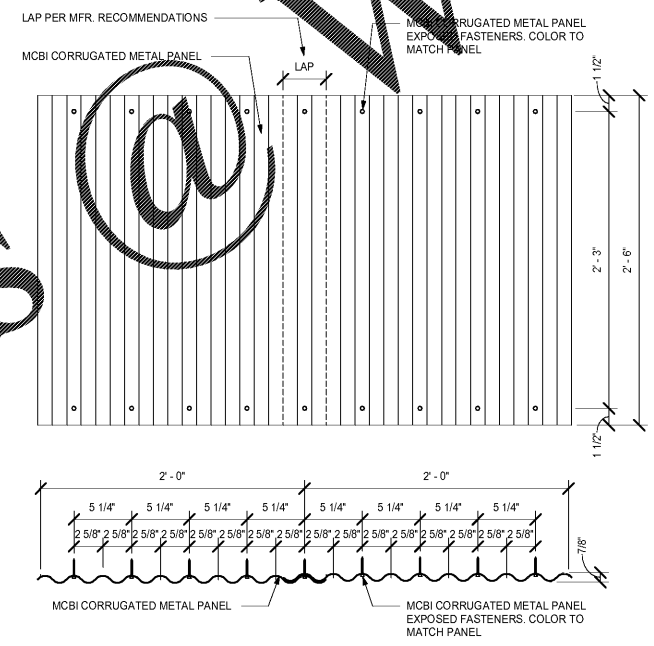
**4** FOOTING - WALK IN EXTERIOR WALL  
 SCALE: 1 1/2" = 1'-0"



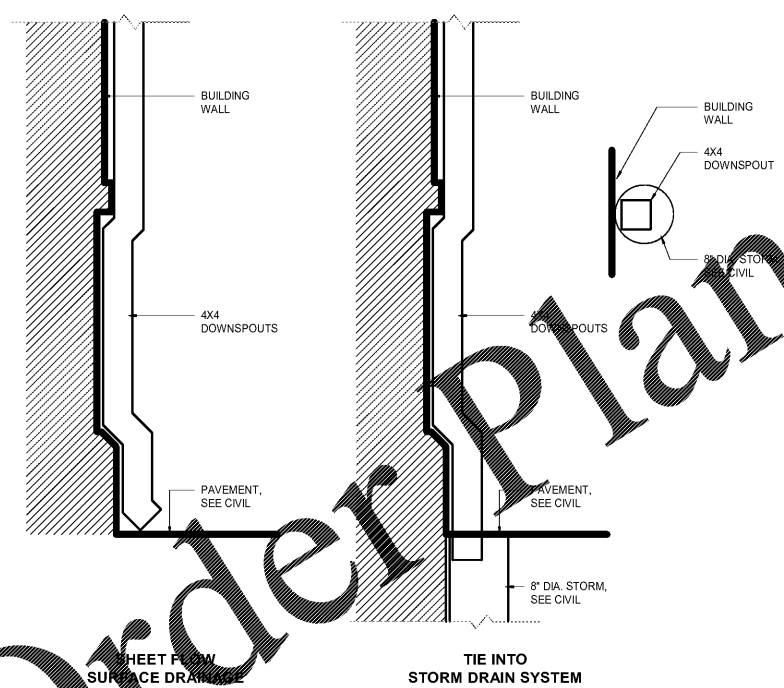
**5** FOOTING - WALK-IN INTERIOR WALL  
 SCALE: 1 1/2" = 1'-0"



**1** FOOTING - FOOTING AT STOREFRONT  
 SCALE: 1 1/2" = 1'-0"



**3** DETAIL - EXPOSED METAL FASTENERS  
 SCALE: 1 1/2" = 1'-0"



**6** DETAIL - DOWNSPOUTS  
 SCALE: 1" = 1'-0"

GENERAL NOTE: REFER TO MANUFACTURER'S RECOMMENDATIONS FOR FASTENING AND LAP REQUIREMENTS AT CORRUGATED METAL PANEL WALLS ABOVE ELEVATION 2'-6"