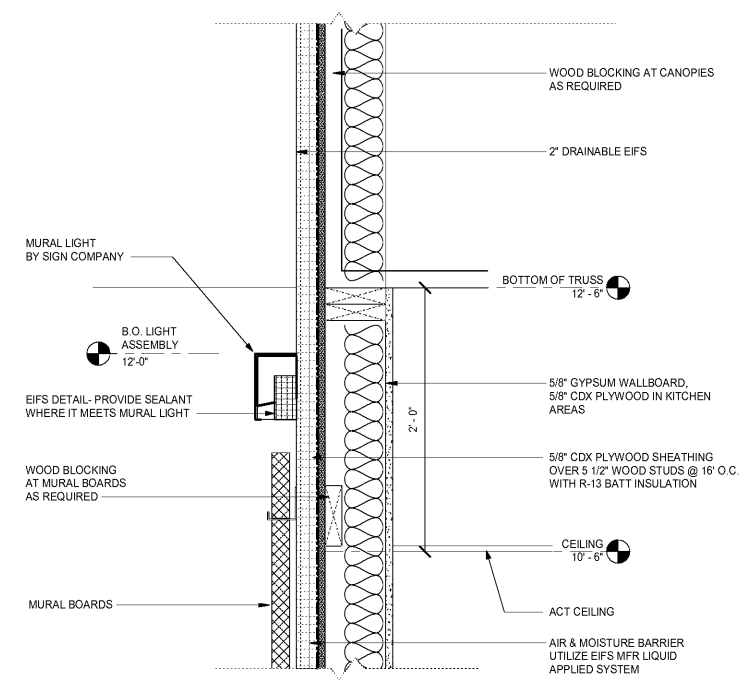
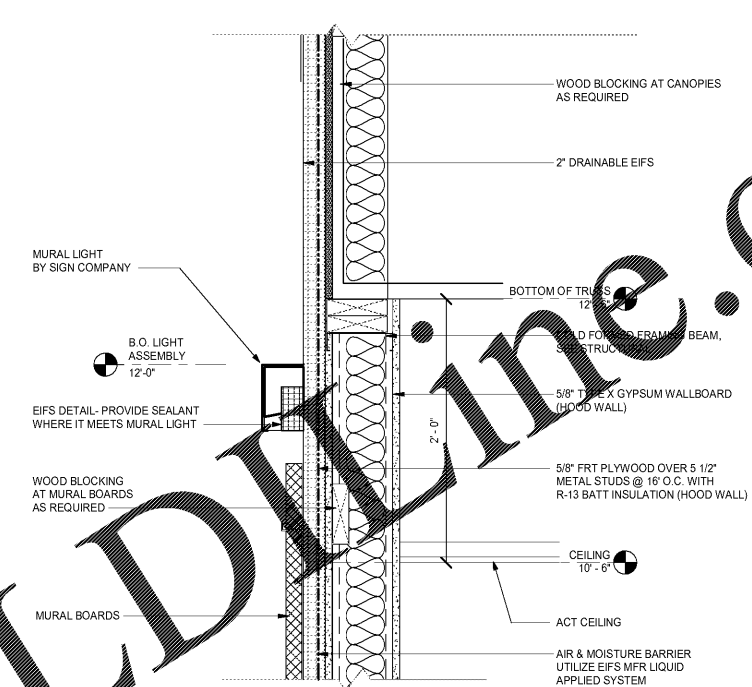


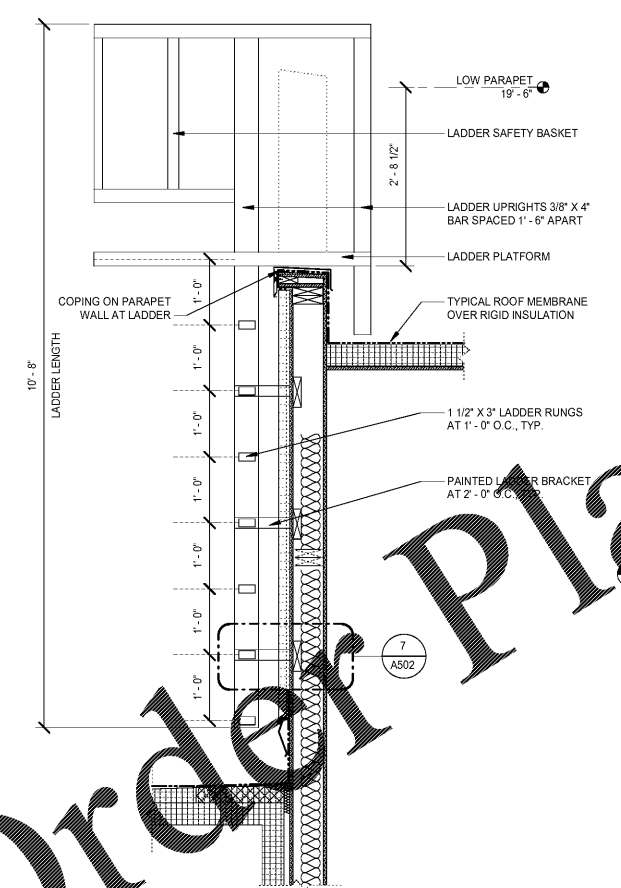
DETAIL - LADDER MOUNTING
 SCALE: 1 1/2" = 1'-0"



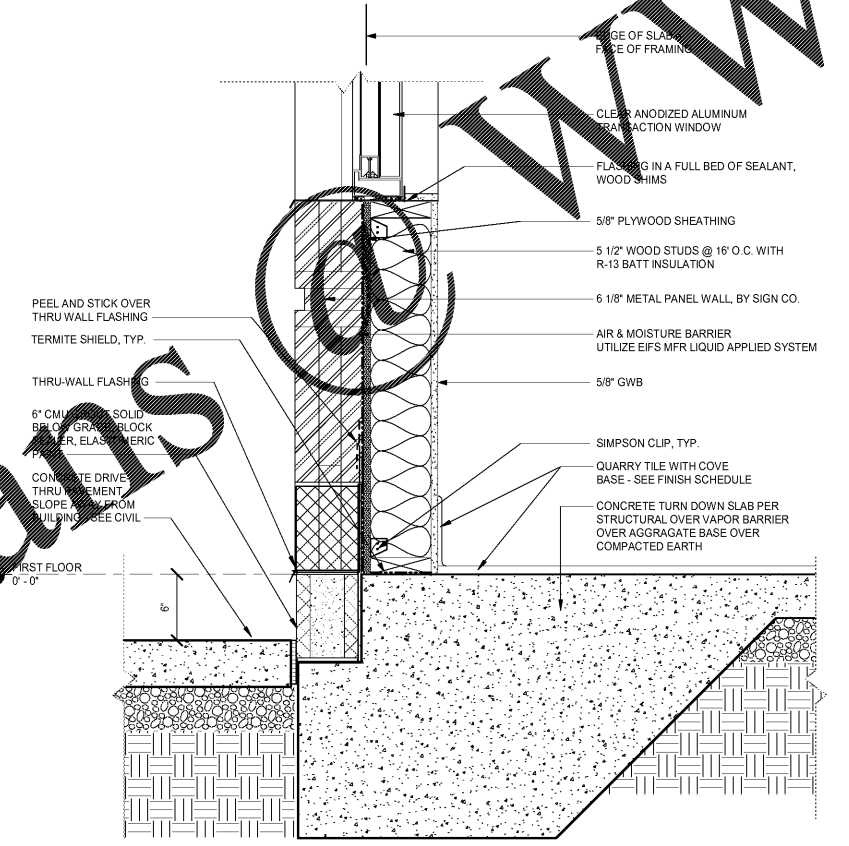
4 WALL - WOOD STUDS AT MURAL WALL
 SCALE: 1 1/2" = 1'-0"



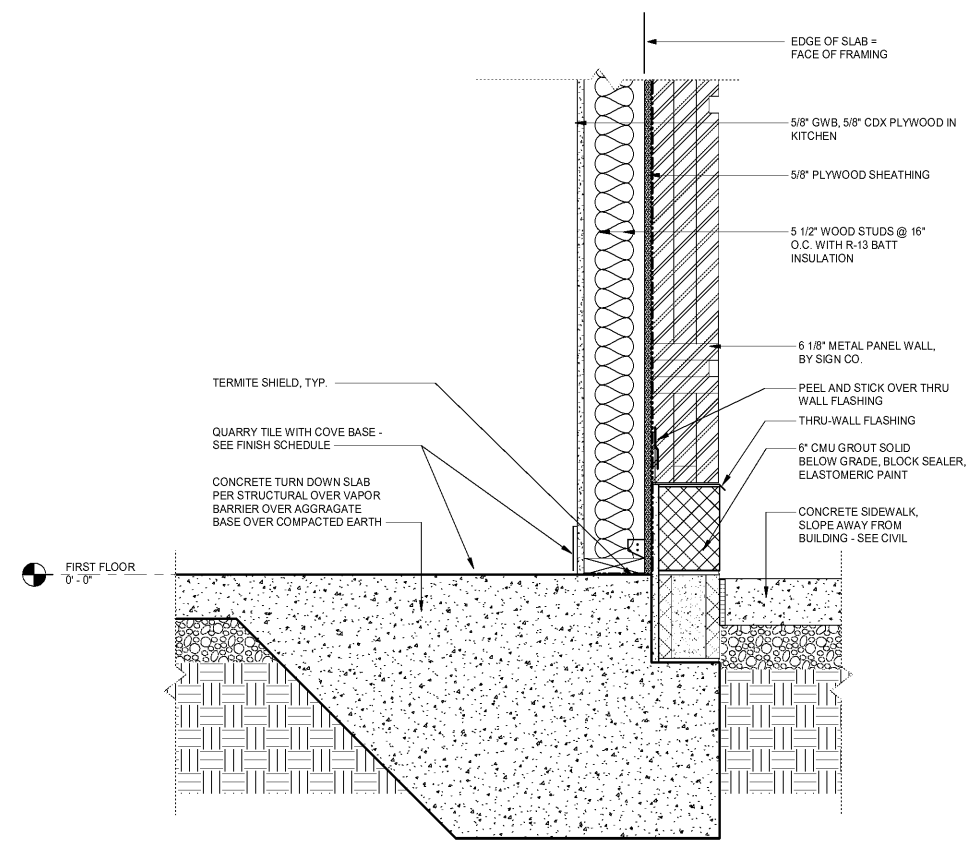
2 WALL - METAL STUDS AT MURAL WALL
 SCALE: 1 1/2" = 1'-0"



5 DETAIL - LADDER
 SCALE: 3/4" = 1'-0"



3 FOOTING - DRIVE THRU
 SCALE: 1 1/2" = 1'-0"



1 FOOTING - RED WALL
 SCALE: 1 1/2" = 1'-0"

#ATL034
 CONYERS, GA

Krystal

ISSUED FOR
 CONSTRUCTION

1447 Highway 138
 Conyers, Georgia 30012
 Rockdale County, Georgia

Revisions		
#	Date	Description

Project Number: 18028
 Issued for: CONSTRUCTION
 Issue Date: 03/22/18

DRAWING TITLE
SECTION DETAILS

SHEET NUMBER
A502