

#ATL034
CONYERS, GA

Krystal

ISSUED FOR
CONSTRUCTION

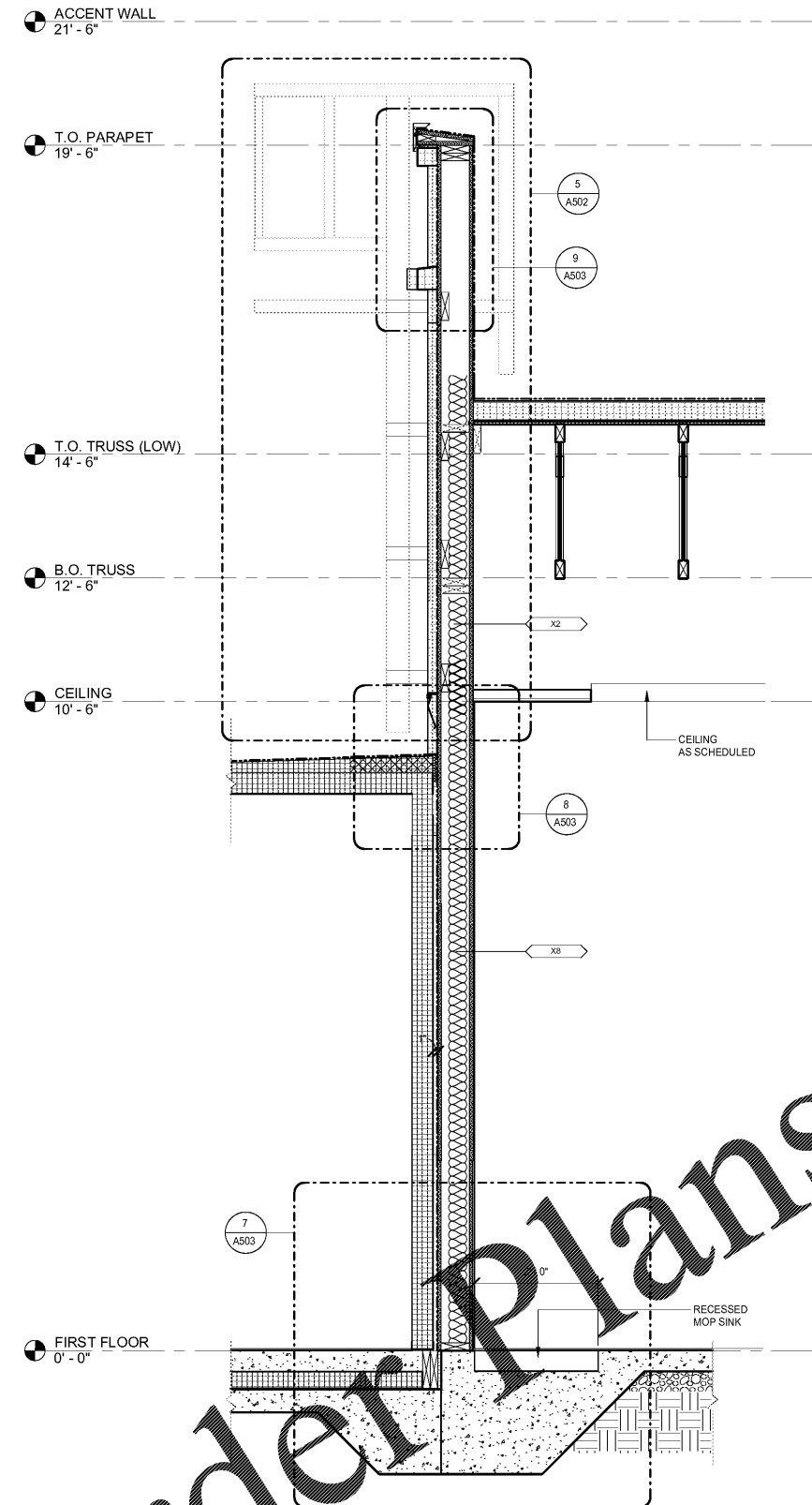
1447 Highway 138
Conyers, Georgia 30012
Rockdale County, Georgia

Revisions		
#	Date	Description

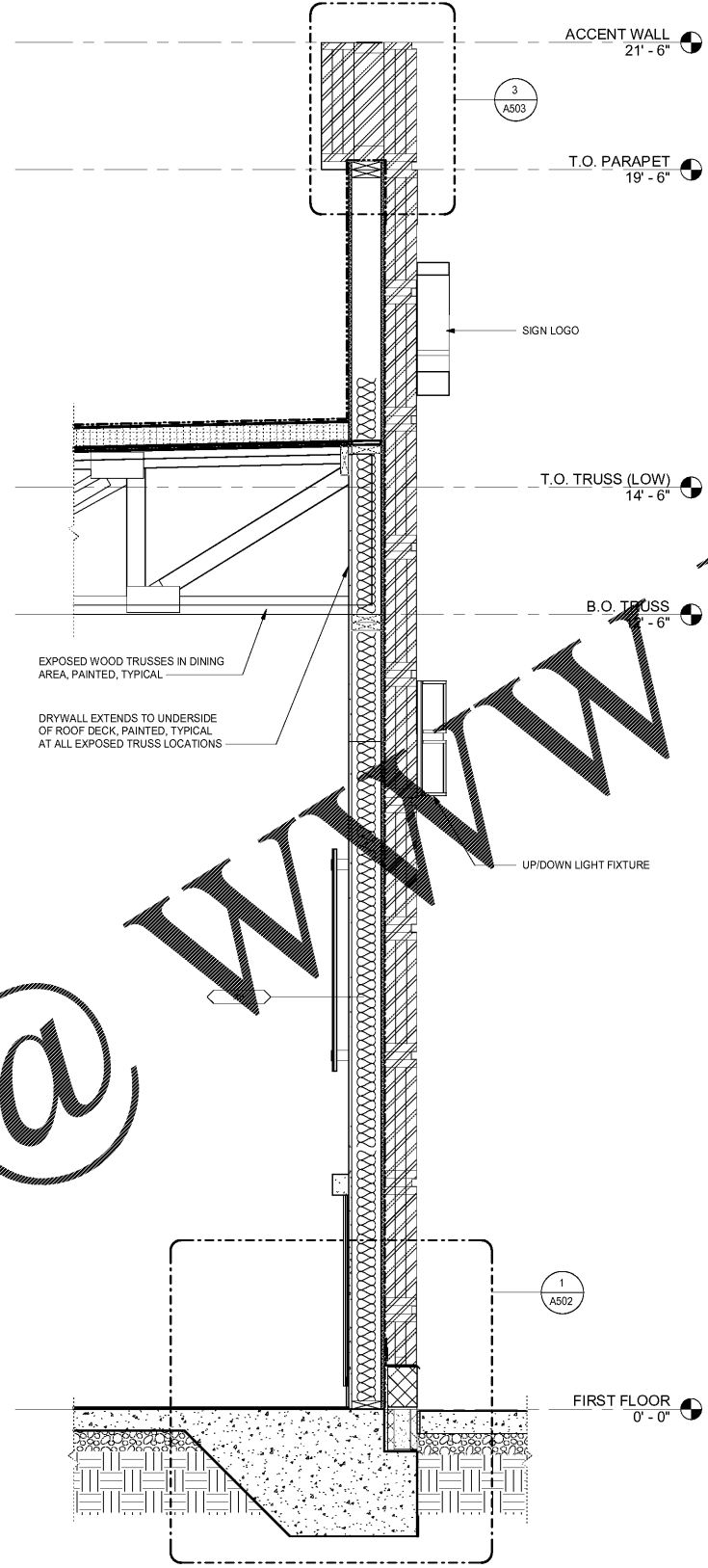
Project Number: 18028
Issued for: CONSTRUCTION
Issue Date: 03/22/18

DRAWING TITLE
WALL SECTIONS

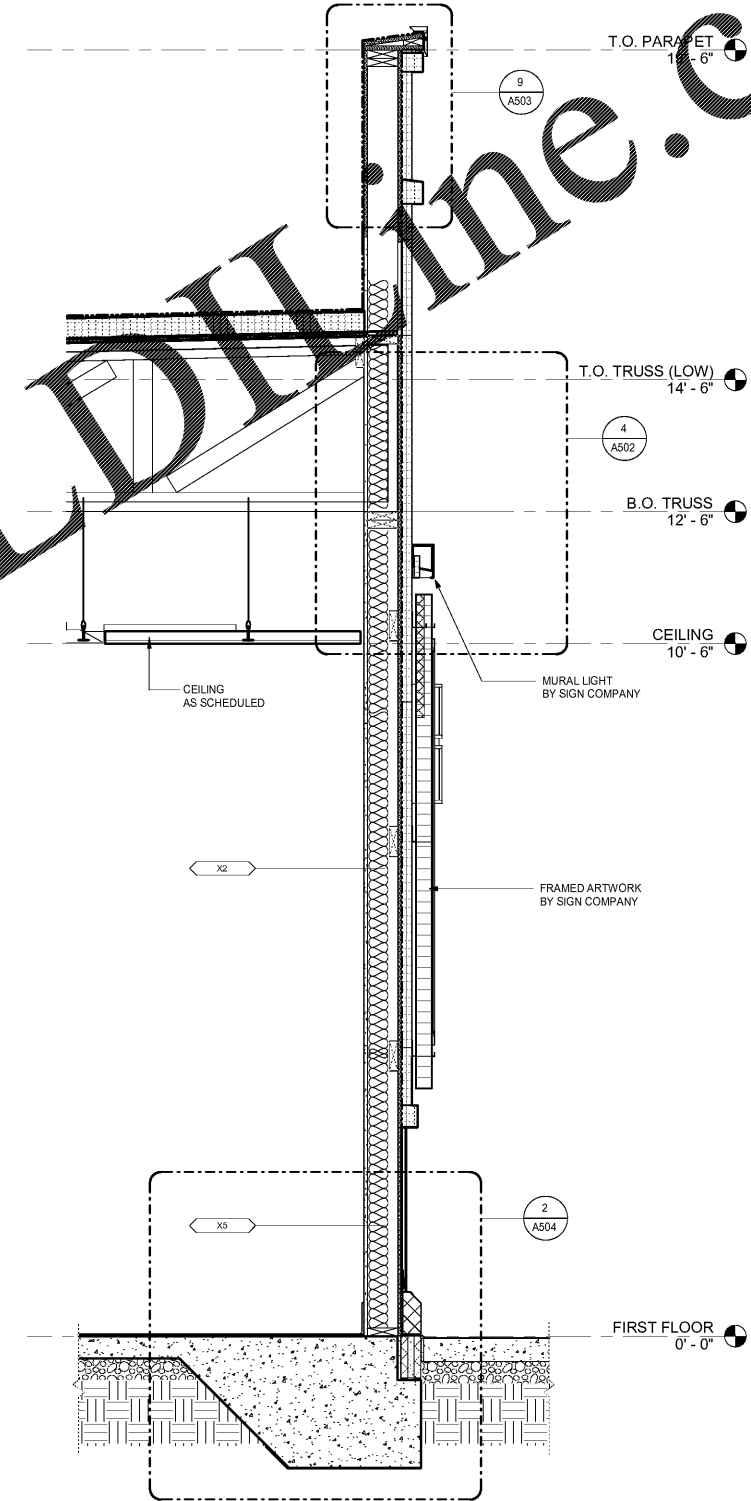
SHEET NUMBER
A413



3 WALL SECTION - REAR WALL
SCALE: 3/4" = 1'-0"



2 WALL SECTION - METAL PANEL WALL
SCALE: 3/4" = 1'-0"



1 WALL SECTION - MURAL WALL
SCALE: 3/4" = 1'-0"

Order Plans @

WWW.LDLINE.COM