

#ATL034
 CONYERS, GA

Krystal

ISSUED FOR
 CONSTRUCTION

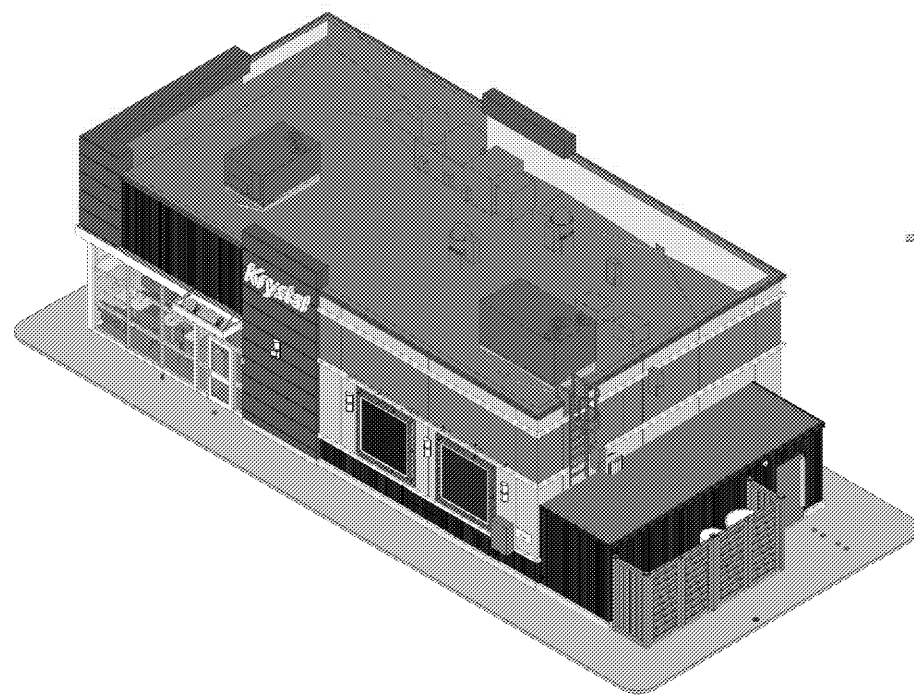
1447 Highway 138
 Conyers, Georgia 30012
 Rockdale County, Georgia

Revisions		
#	Date	Description

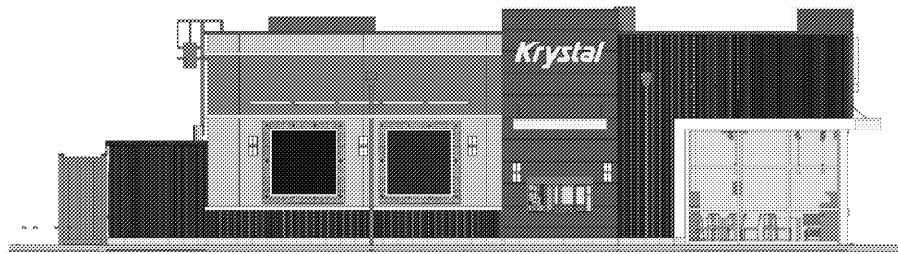
Project Number: 18028
 Issued for: CONSTRUCTION
 Issue Date: 03/22/18

DRAWING TITLE
 EXTERIOR
 RENDERINGS

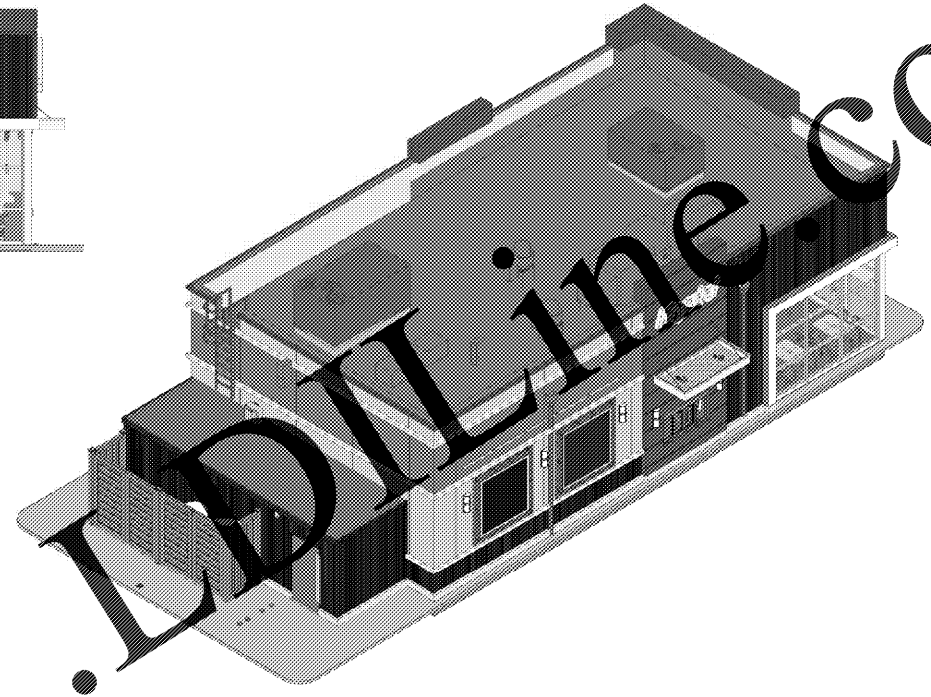
SHEET NUMBER
 G101



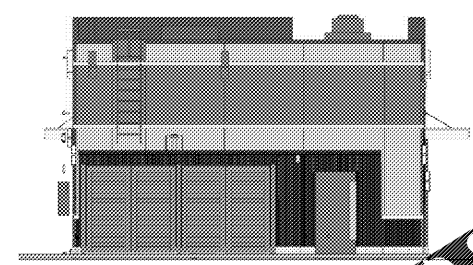
8 3D AXONOMETRIC IMAGE 4
 SCALE:



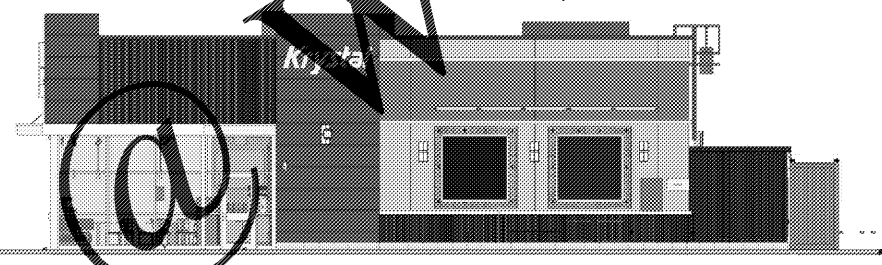
6 WEST ELEVATION
 SCALE:



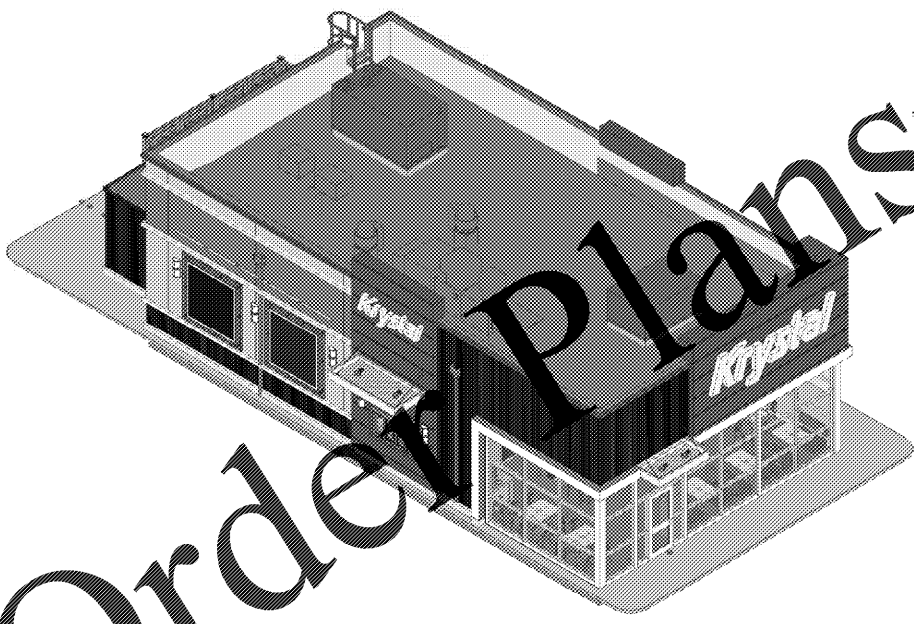
2 3D AXONOMETRIC IMAGE 2
 SCALE:



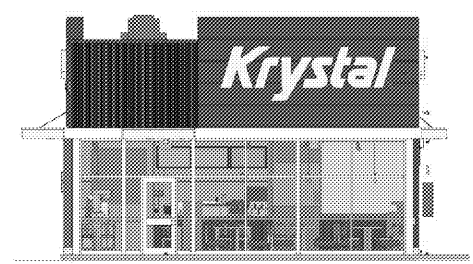
5 REAR ELEVATION
 SCALE:



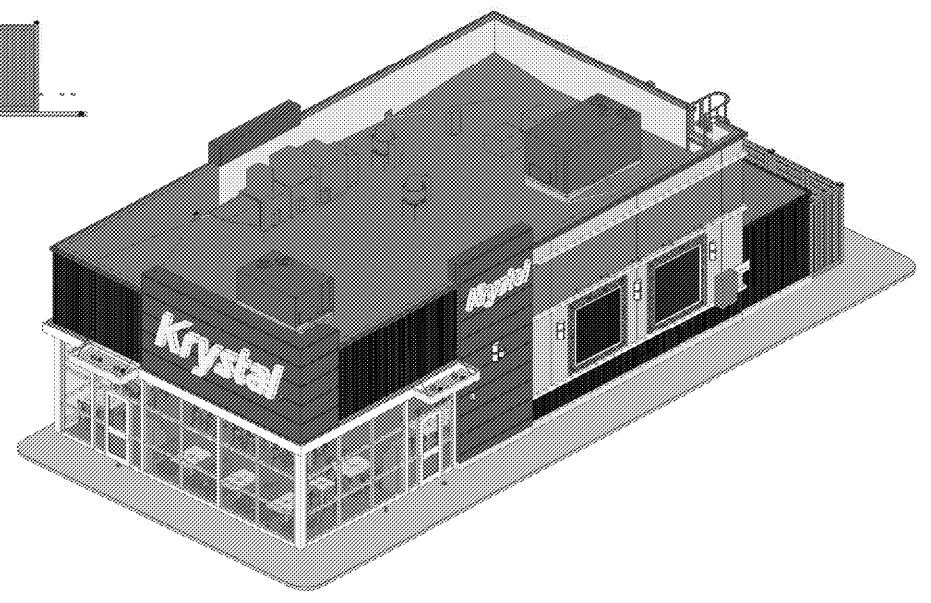
4 EAST ELEVATION
 SCALE:



7 3D AXONOMETRIC IMAGE 3
 SCALE:



3 FRONT ELEVATION
 SCALE:



1 3D AXONOMETRIC IMAGE 1
 SCALE:

Order Plans @

WWW.ONLINE.COM