

ELECTRICAL PANEL SCHEDULE

PANEL: A SERVICE: 120/208V, 3P, 4W + GND FEEDERS: SEE ONE LINE DIAGRAM
PANEL TYPE: SQ-D "NOOD" OR EQUAL BUS RATING: 200 A M.L.O. MOUNTING: NEMA-1 RECESSED

LOAD DESCRIPTION	NOTE	LOAD VOLT-AMP	WIRE	CB/P	A B C	CB/P	WIRE	LOAD VOLT-AMP	NOTE	LOAD DESCRIPTION
AREA LIGHTS	**	1080	10	20/2	1	2	20/1	12	750	DINING RM. LIGHTS
AREA LIGHTS	**	1080	10	20/2	3	4	20/1	12	810	DINING RM. LIGHTS
AREA LIGHTS	**	1080	10	20/2	5	6	20/1	12	1500	KITCHEN AREA LIGHTS
AREA LIGHTS	**	1080	10	20/2	7	8	20/1	12	720	OCU / CREDIT CARD SWIPE
AREA LIGHTS	**	1080	10	20/2	9	10	20/1	12	900	DINING RECEPTACLE
AREA LIGHTS	**	1080	10	20/2	11	12	20/1	12	400	RESTROOM LIGHTS/EF-2
AREA LIGHTS	**	1080	10	20/2	13	14	20/1	12	720	DIRECTIONAL SIGNS
AREA LIGHTS	**	1080	10	20/2	15	16	20/1	12	1320	KITCHEN/SERVICE/OFFICE LIGHTS
AREA LIGHTS	**	1080	10	20/2	17	18	20/1	12	360	SMOKE DET. ALARM PANEL
AREA LIGHTS	**	1080	10	20/2	19	20	20/1	12	660	DINING RECEPTACLE
AREA LIGHTS	**	1080	10	20/2	21	22	20/1	12	720	EMS PANEL
AREA LIGHTS	**	1080	10	20/2	23	24	20/1	12	1550	EXTERIOR BUILDING LIGHTS
AREA LIGHTS	**	1080	10	20/2	25	26	20/1	12	180	TELEPHONE REC.
AREA LIGHTS	**	1080	10	20/2	27	28	20/1	12	660	DINING RECEPTACLES
AREA LIGHTS	**	1080	10	20/2	29	30	20/1	12	360	GFCI KITCHEN RECEPTACLES
AREA LIGHTS	**	1080	10	20/2	31	32	20/2	12	1080	AREA LIGHTS
AREA LIGHTS	**	1080	10	20/2	33	34	20/1	12	1080	OFFICE RECEPTACLES
AREA LIGHTS	**	1080	10	20/2	35	36	20/1	12	720	SEWAGE PUMPING STATION
AREA LIGHTS	**	1080	10	20/2	37	38	20/2	12	700	SEWAGE PUMPING STATION
AREA LIGHTS	**	1080	10	20/2	39	40	20/1	12	700	SEWAGE PUMPING STATION
AREA LIGHTS	**	1080	10	20/2	41	42	20/1	12	300	SAFE

TOTAL CONNECTED LOAD: 38,290 VA **PHASE 'A':** 13200 VA **NOTES:** (TC) = WIRE THROUGH CONTACTOR.
TOTAL CONNECTED AMPS: 106 AMP **PHASE 'B':** 13805 VA (HACR) = HACR TYPE BREAKER.
PHASE 'C': 11285 VA (LO) = LOCKED BREAKER.
 (GFCI) = GROUND FAULT CIRCUIT INTERRUPTER
 (IG) = WIRE SEPARATE TO ISOLATED GROUND BUS.

ELECTRICAL PANEL SCHEDULE

PANEL: B SERVICE: 120/208V, 3P, 4W + GND FEEDERS: SEE ONE LINE DIAGRAM
PANEL TYPE: SQ-D "NOOD" OR EQUAL SIZE: 200 AMP M.L.O. MOUNTING: NEMA-1 RECESSED

LOAD DESCRIPTION	NOTE	LOAD VOLT-AMP	WIRE	CB/P	A B C	CB/P	WIRE	LOAD VOLT-AMP	NOTE	LOAD DESCRIPTION
SELF-SERVE DRINK DISPENSER		600	12	20/1	1	2	20/1	12	600	SELF-SERVE DRINK DISPENSER
P.O.S. RECEPTACLES	GFCI	1320	12	20/1	3	4	20/1	12	360	REFRIGERATED PREP UNIT
P.O.S. RECEPTACLES	GFCI	1320	12	20/1	5	6	20/1	12	400	PRODUCT HOLDING FREEZER
DRIVE-THRU DRINK DISPENSER		600	12	20/1	7	8	20/1	12	1200	U/C REFRIGERATOR
REAR DOOR BUZZER		720	12	20/1	9	10	20/1	12	300	BROILER CONTROLS
DOOR ALARM		720	12	20/1	11	12	20/1	12		SPARE
WATER HEATER		300	12	20/1	13	14	20/1	12	700	MEAT FREEZER
SERVICE CTR/D.T. RECEPT.		576	12	20/1	15	16	20/1	12	700	REACH-IN FREEZER
P.O.S. RECEPTACLES	IG/LO	800	12	20/1	17	18	20/1	12	420	SMOOTHIE STATION SPARE RECEPT.
SPARE		400	12	20/1	19	20	20/2	12	1300	HACR ICE MACHINE
COFFEE/TEA BREWER		1820	12	20/1	21	22	12	1300		
SPARE		12	20/1	23	24	20/1				SPARE
GREASE STORAGE UNIT		500	12	20/1	25	26	20/1	12	400	ORDER ASSEMBLY CART
WATER BOOSTER		1428	12	20/1	27	28	20/1	12	1400	SPARE
FRYER CONTROLS		1200	12	20/1	29	30	20/2	12	1650	PRODUCT HOLDING UNIT
FRYER HOOD LIGHTS		300	12	20/1	31	32	12	1650		
BROILER HOOD LIGHTS		300	12	20/1	33	34	35/2	8	1440	FROZEN BEV. DISP.
SPARE				20/1	35	36			1440	
SPARE				20/1	37	38	35/2	8	1440	SMOOTHIE MACHINE
SPARE				20/1	39	40			1400	
SPARE				20/1	41	42				SPACE

TOTAL CONNECTED LOAD: 45,472 VA **PHASE 'A':** 14206 VA **NOTES:** (TC) = WIRE THROUGH CONTACTOR.
TOTAL CONNECTED AMPS: 131 AMP **PHASE 'B':** 15918 VA (HACR) = HACR TYPE BREAKER.
PHASE 'C': 15348 VA (LO) = LOCKED BREAKER.
 (GFCI) = GROUND FAULT CIRCUIT INTERRUPTER
 (IG) = WIRE SEPARATE TO ISOLATED GROUND BUS.

ELECTRICAL PANEL SCHEDULE

PANEL: D SERVICE: 120/208/240V, 3P, 4W + GND FEEDERS: SEE ONE LINE DIAGRAM
PANEL TYPE: SQ-D "NOOD" OR EQUAL BUS RATING: 150A M.L.O. MOUNTING: FURNISHED BY EQUIPMENT SUPPLIER

LOAD DESCRIPTION	NOTE	LOAD VOLT-AMP	WIRE	CB/P	A B C	CB/P	WIRE	LOAD VOLT-AMP	NOTE	LOAD DESCRIPTION
PHU/MICROWAVE		1920	12	20/2	1	2	20/2	12		PHU/MICROWAVE
PHU/MICROWAVE		1920	12	20/2	3	4	20/2	12		PHU/MICROWAVE
PHU/MICROWAVE		1920	12	20/2	5	6	20/2	12		PHU/MICROWAVE
CONVEYOR TOASTER		1920	12	20/2	7	8	20/2	12		CONVEYOR TOASTER
VERTICAL TOASTER		2880	10	30/2	9	10	20/1	12	1920	EGG COOKER
HEATED SURFACES		2880	10	30/2	11	12	20/1	12	1920	SPARE
SPACE		240	12	20/1	13	14	20/1	12	1920	SANDWICH STATION
UTILITY		1920	12	20/1	15	16	30/2	10	2880	VERTICAL TOASTER
SPACE				20/1	17	18	20/1	12	1920	UTILITY
SPACE				20/1	19	20	20/1	12		SPACE

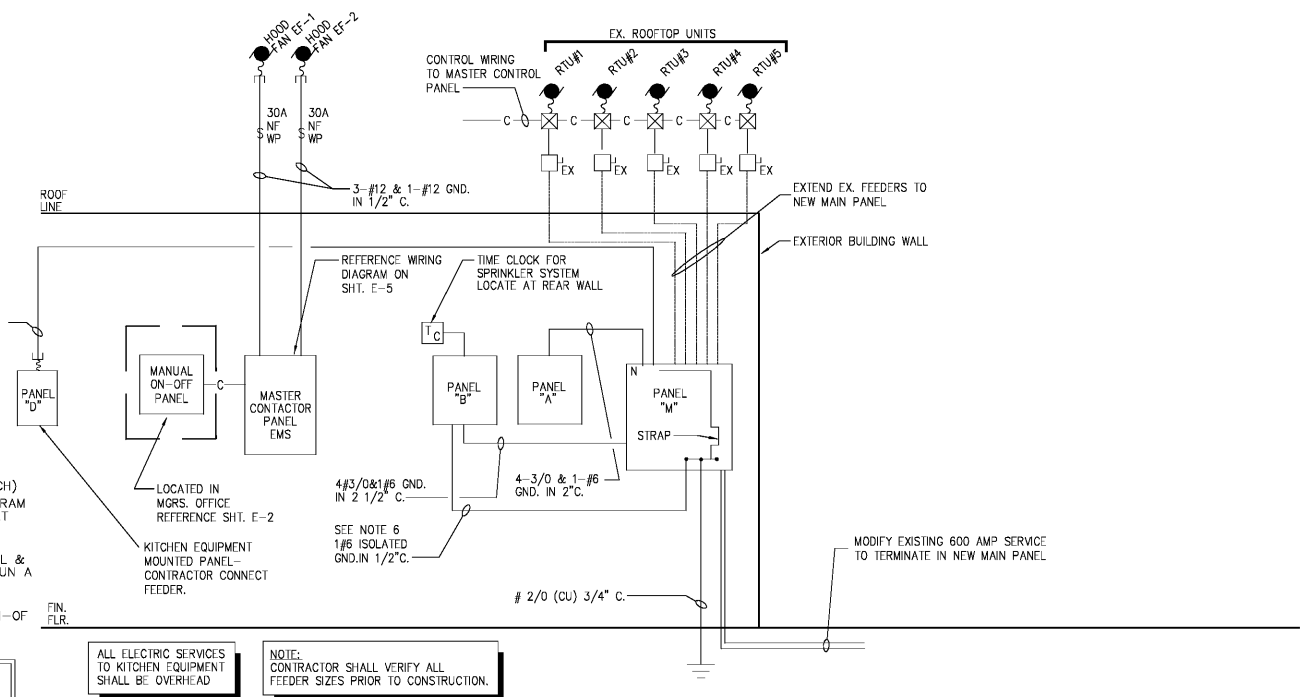
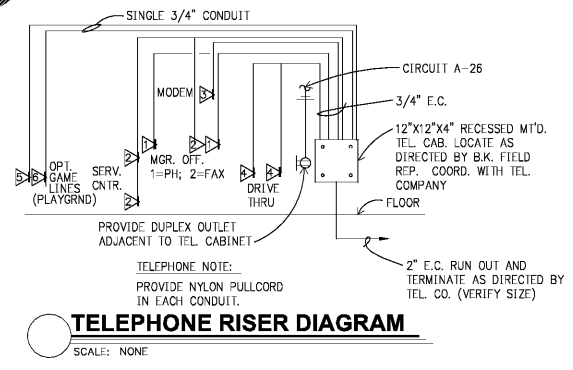
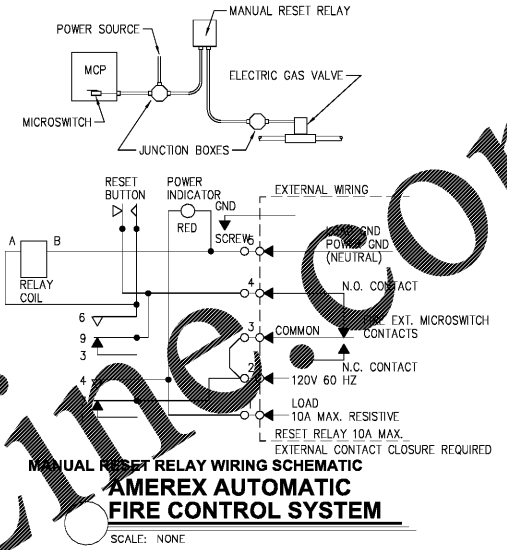
TOTAL CONNECTED LOAD: 40560 VA **PHASE 'A':** 15360 VA **NOTES:** (TC) = WIRE THROUGH CONTACTOR.
TOTAL CONNECTED AMPS: 112 AMP **PHASE 'B':** 16320 VA (HACR) = HACR TYPE BREAKER.
PHASE 'C': 10800 VA (LO) = LOCKED BREAKER.
 (GFCI) = GROUND FAULT CIRCUIT INTERRUPTER
 (IG) = WIRE SEPARATE TO ISOLATED GROUND BUS.

ELECTRICAL PANEL SCHEDULE

PANEL: M A.I.C. RATING: 42,000 SERVICE: 120/208V, 3P, 4W + GND FEEDERS: SEE ONE LINE DIAGRAM
PANEL TYPE: SQ-D "1-LINE" OR EQUAL SIZE: 600 AMP MAIN BREAKER MOUNTING: NEMA-1 RECESSED

LOAD DESCRIPTION	NOTE	LOAD VOLT-AMP	WIRE	CB/P	A B C	CB/P	WIRE	LOAD VOLT-AMP	NOTE	LOAD DESCRIPTION
PANEL A		13200	3/0	200/3	1	2	200/3	3/0	14206	PANEL B
PANEL A		13805						15918		PANEL D
PANEL A		11285						15348		
EX. RTU-1	HACR	3160	*	*3	3	4	100/3	1/0	15360	
EX. RTU-1		3160						16320		
EX. RTU-1		3160						10800		
EX. RTU-3	HACR	3160	*	*3	5	6	*3	*	3160	HACR EX. RTU-2
EX. RTU-3		3160						3160		
EX. RTU-3		3160						3160		
EF-1		350	#12	20/2	7	8	30/3	#10	3240	CONVECTION OVEN
EF-1		350						3240		
EF-2		350	#12	20/2	9	10	*3	*	4750	HACR EX. RTU-4
EF-2		350						4750		
WALK-IN BOX COOLER CONDENSER		465	#12	20/2	11	12	*3	*	4750	HACR EX. RTU-5
WALK-IN BOX COOLER CONDENSER		465						4750		
WALK-IN BOX FREEZER CONDENSER		3024	#10	30/3	13	14			4750	SPACE
WALK-IN BOX FREEZER CONDENSER		3024								
WALK-IN BOX FREEZER CONDENSER		3024								

TOTAL CONNECTED LOAD: 203954 VA **PHASE 'A':** 69175 VA **NOTES:** (TC) = WIRE THROUGH CONTACTOR.
TOTAL CONNECTED AMPS: 600 AMPS **PHASE 'B':** 72102 VA (HACR) = HACR TYPE BREAKER.
PHASE 'C': 62677 VA (LO) = LOCKED BREAKER.
 (GFCI) = GROUND FAULT CIRCUIT INTERRUPTER
 (IG) = WIRE SEPARATE TO ISOLATED GROUND BUS.



ELECTRICAL DISTRIBUTION PANELS, MASTER CONTACTOR PANEL AND MANUAL ON/OFF PANEL MAY BE PURCHASED AS A LOOSE GEAR PACKAGE THROUGH:
SUNCOAST ENVIRONMENTAL CONTROLS, INC.
 8565 151ST AVENUE NORTH
 LARGO, FLORIDA 34643
 PHONE (877) 544-6679

Order Plans

DATE: 04-23-2018
 CHECKED BY: [Signature]
 DRAWN BY: DBM
 NO. DATE
 01 04/23/18 RD/PERMIT SET
BURGER KING
 PREMIER HOLDINGS OF GEORGIA, LLC
 3838 Stewart Road, Unit A
 Doraville, GA 30090

2126 Morris Avenue
 Atlanta, GA 30329
 Phone (404) 322-1751
 Fax (404) 322-1778
 email: info@hpluhaha.com
 www.hpluhaha.com
james m. huckestein architect AIA
 architecture • planning • interior design

GEORGIA
 No. 22418
 PROFESSIONAL ENGINEER
ELISABETH HYLE
 5/9/18

PROJECT #1702A15
BURGER KING
 998 SUNSET BLVD,
 JESUP, GA 31545
 ELECTRICAL PANELS AND RISERS