

ELECTRICAL CEILING PLAN

SCALE: 1/4" = 1'-0"

GENERAL NOTES:

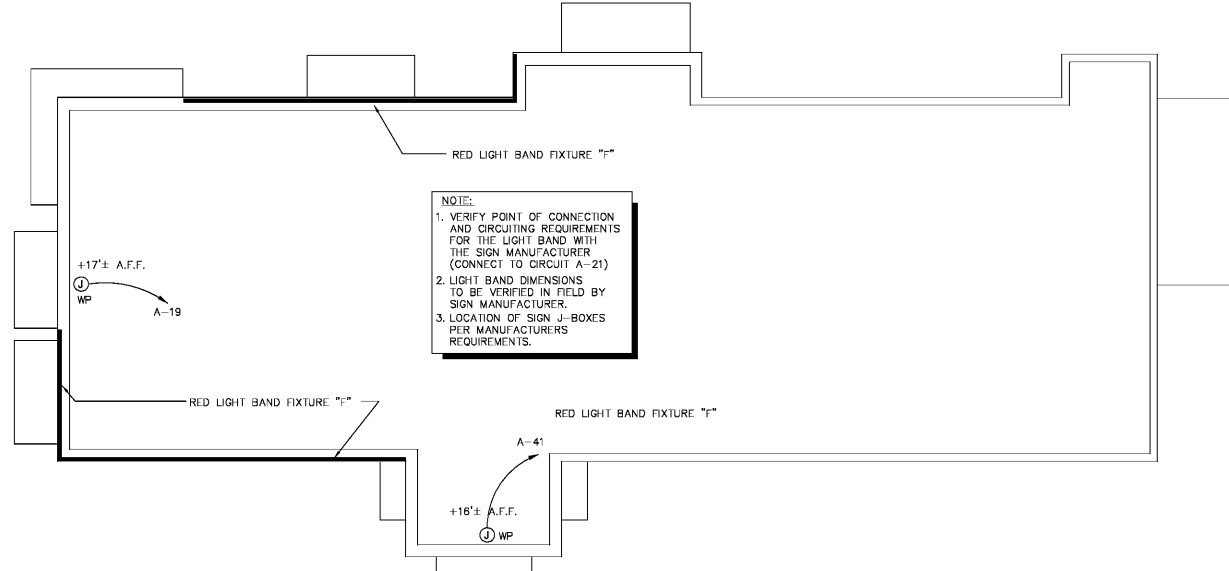
- A. REFER TO SHEET E-1.1 FOR LIGHT FIXTURE SPECIFICATIONS
- B. SEE ARCHITECTURAL REFLECTED CEILING PLAN FOR EXACT LOCATION AND MOUNTING HEIGHTS OF LIGHT FIXTURES. COORDINATE FIXTURE LOCATIONS WITH DECOR DRAWINGS.
- C. ALL WORK AND MATERIALS SHALL BE BY THE ELECTRICAL CONTRACTOR UNLESS NOTED OTHERWISE.
- D. MC CABLE ONLY PERMITTED FOR LIGHT WHIPS. ALL OTHER TO BE EMT CONDUIT IN CEILING AND WALLS - RIGID CONDUIT UNDER SLAB.
- E. PROVIDE JUNCTION BOXES AT LIGHT FIXTURES PER MANUFACTURERS REQUIREMENTS. (TYPICAL FOR ALL LIGHTING FIXTURES)
- F. WHERE TRUSSES ARE EXPOSED, RUN ALL ELECTRICAL CONDUITS ABOVE THE BOTTOM CHORD OF THE TRUSS.

LIGHTING FIXTURE NOTES

- 1. ALL LIGHTING FIXTURES SHALL BE 120 VOLT UNLESS NOTED OTHERWISE.
- 2. ALL ENCLOSED FUSELESS LIGHTING FIXTURES SHALL BE PROVIDED WITH FUSES SPECIFIED BY THE MANUFACTURER.
- 3. CONTRACTOR SHALL PROVIDE AND INSTALL IN-LINE FUSE HOLDER AND FUSES FOR ALL BALLAST LIGHTING FIXTURES.
- 4. CONTRACTOR SHALL CHECK AND VERIFY FIXTURE QUANTITY AND LOCATION. MAKE ANY CHANGES IN PLAN SHOWN DUE TO ADDITIONAL REQUIREMENTS SUCH AS VESTIBULES, LOCAL CODES, OR FINISHING WORKING FOR AREA LIGHTING POLES SPECIFICATIONS AND DETAILS.
- 5. BALLASTS FOR FLUORESCENT FIXTURES SHALL BE TYPE 'P' WITH MINIMUM POWER FACTOR OF 90%. BALLASTS FOR SOFFIT LIGHTING SHALL BE RATED 50% FOR ZONE 'E', 0% FOR ZONES 'B', 'C', AND 'D', AND -20% FOR ZONE 'A'. ZONE 'A' LAMPS TO BE H/G, AND THE EXISTING EXTERIOR SITE LIGHTING CIRCUITS BACK INTO NEW PANELS. SEE PANEL SCHEDULES FOR ASSIGNED CIRCUITS.

KEYED NOTES:

- 1. LIGHTING OVERHIDE STATION
- 2. WALL PENETRATOR THROUGH PHOTO CELL
- 3. ELECTRICAL CONTRACTOR PROVIDE "PANEL" THROUGH CELL
- 4. ELECTRICAL CONTRACTOR PROVIDE 201-00 MOUNTED ON PHOTO CELL
- 5. MAKE ADJUSTMENTS FOR AMBIENT LIGHT. PROVIDE SOFTWARE FOR INSTALLATION IN GYPSUM AND CEILINGS.
- 6. ELECTRICAL CONTRACTOR TO COORDINATE WITH SIGN SUPPLIER FOR THROUGH SIGN SUPPLIER FOR ELECTRICAL REQUIREMENTS.
- 7. ALL LIGHT FIXTURES OVER FOOD SERVICE AREA TO BE PROVIDED WITH LENS.



PARAPET LIGHT FIXTURE PLAN

SCALE: 1/8" = 1'-0"

Order Print

PROJECT #17026.1	DATE: 04/23/2018
DRAWN BY: DBM	CHECKED BY: JESON
NO. DATE	REV/PERMIT SET
01 04/23/18	RD/PERMIT SET



PREMIER HOLDINGS OF GEORGIA, LLC
3838 Stewart Road, Unit A
Doraville, GA 30046

2126 Morris Avenue
Atlanta, GA 30329
Phone: (404) 322-1751
Fax: (404) 322-1778
Email: info@hplu.com
www.hplu.com

james m. huckestein architect AIA
architecture • planning • interior design



PROJECT #17026.1
BURGER KING
998 SUNSET BLVD,
JESUP, GA 31545
LIGHTING PLAN - OPTION 1