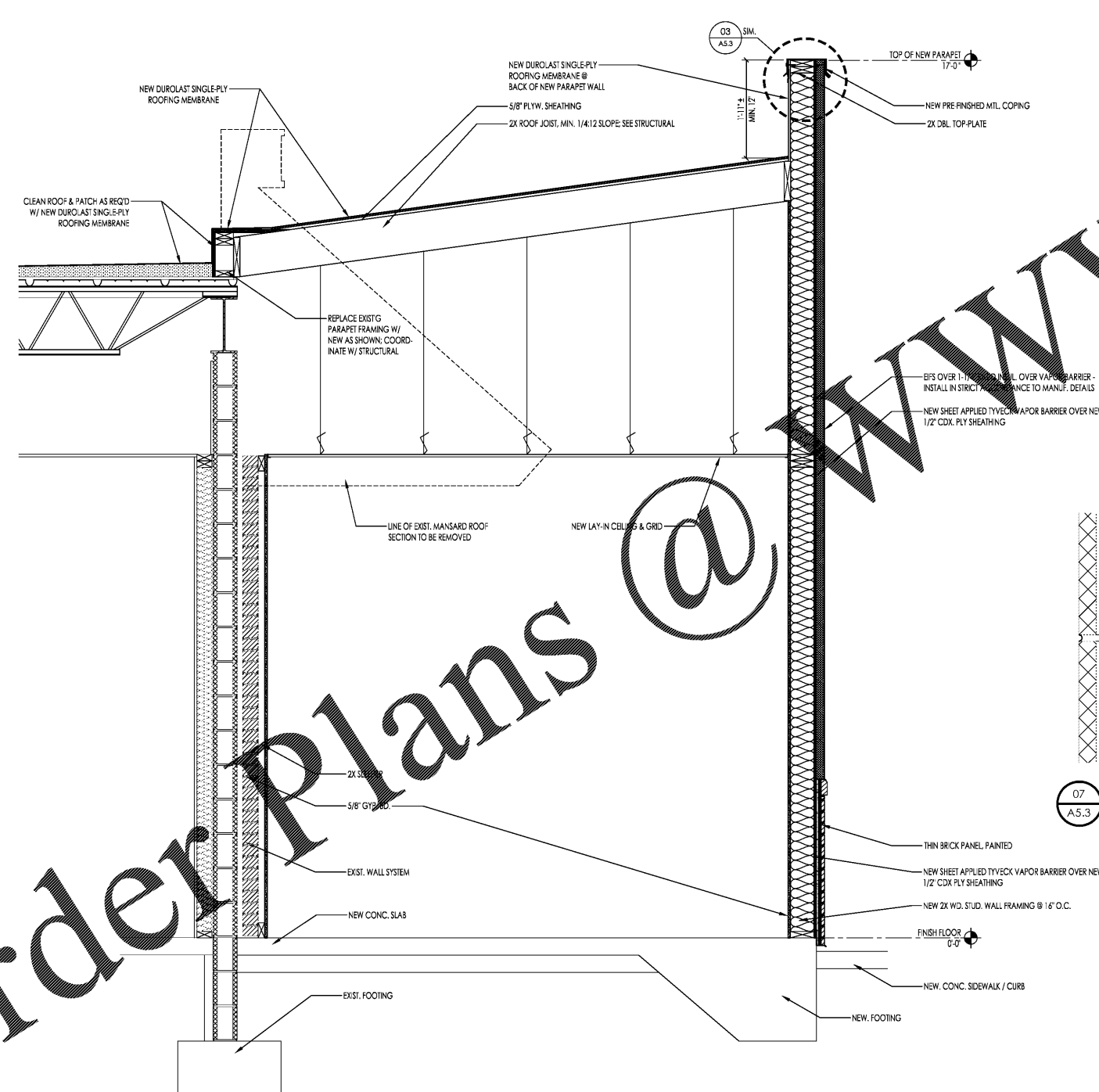
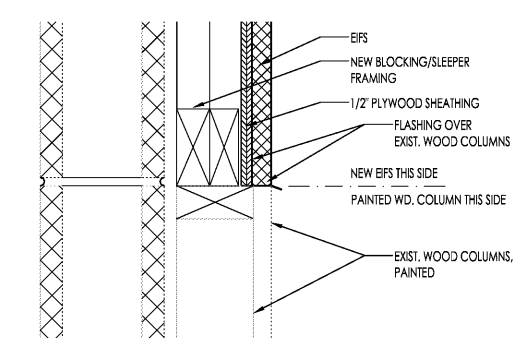


Order Plans @

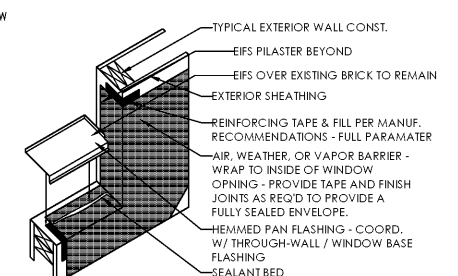


06 WALL SECTION
A5.3 SCALE: 3/4" = 1'-0"

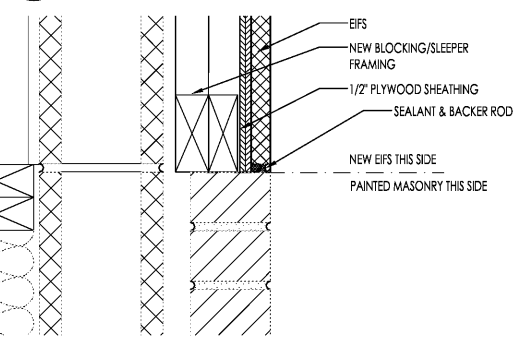
07 DETAIL @ EIFS/WOOD COLUMN
A5.3 SCALE: 3" = 1'-0"



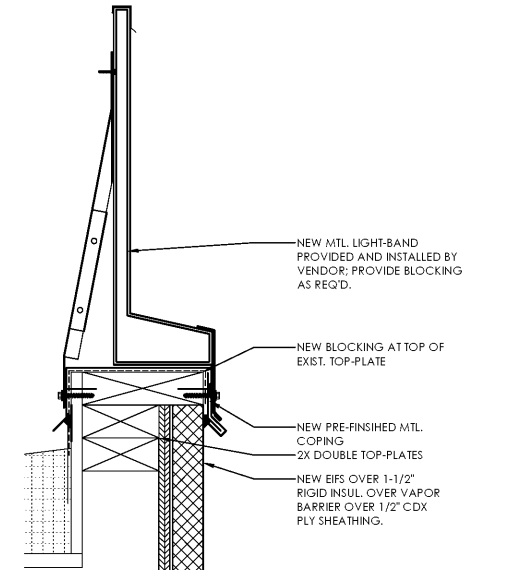
05 TYP. FLASHING DETAIL
A5.3 SCALE: 3/4" = 1'-0"



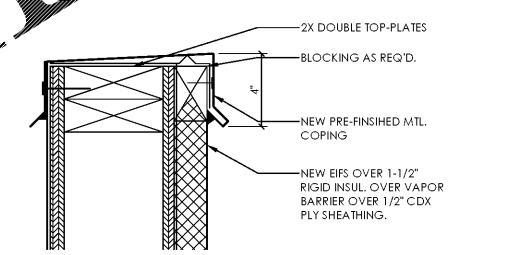
02 DETAIL @ NEW LIGHT BAND
A5.3 SCALE: 3" = 1'-0"



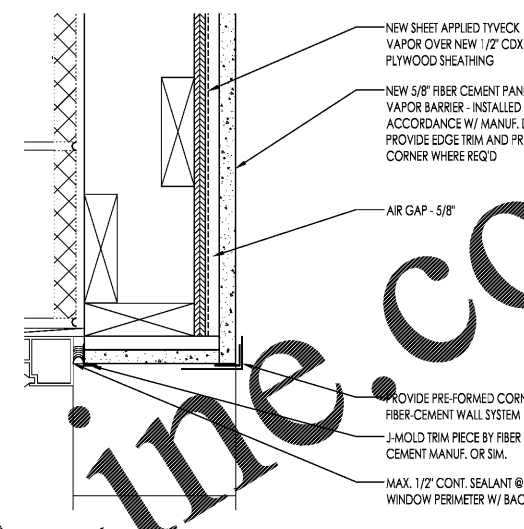
01 DETAIL @ EIFS / MASONRY JOINT
A5.3 SCALE: 3" = 1'-0"



03 DETAIL @ PARAPET CAP
A5.3 SCALE: 3" = 1'-0"



04 DETAIL @ FIBER CEMENT RETURN
A5.3 SCALE: 3" = 1'-0"



05.11.18

PROJECT #170215

MADE 2020 - JULY 2012 STANDARDS

PREMIER HOLDINGS OF GEORGIA, LLC
3836 Stewart Road, Unit A
Doraville, GA 30040

2126 North Avenue
Atlanta, GA 30309
Phone: (404) 322-1251
Fax: (404) 322-1778
email: info@jmharch.com
www.jmharch.com

James M. Huckestein
architect AIA

architecture • planning • interior design

STATE OF GEORGIA
JAMES M. HUCKESTEIN
REGISTERED ARCHITECT

BURGER KING
998 SUNSET BLVD.
JESUP, GA 31545

WALL SECTIONS & DETAILS

A5.3