

LIFE SAFETY GENERAL NOTES:

BUILDING DATA:

OCCUPANCY: **ASSEMBLY (A-2)**
 MIXED OCCUPANCY (YES/NO - SEPARATION): **NO**
 CONSTRUCTION TYPE: **II-B**
 MIXED CONSTRUCTION (YES/NO): **NO**
 SPRINKLED (YES/NO 13, 13R, 13D): **NO**
 FIRE DISTRICT (YES/NO): **NO**
 BUILDING HEIGHT: **20'-0" ±**
 NUMBER OF STORIES: **1 - EXIST.**
 MEZZANINE (YES/NO): **NO**
 HIGH RISE (YES/NO): **NO**
 TOTAL GROSS AREA: **3,500 SF**
 AREA INCREASE (YES/NO): **YES, 100%**

OCCUPANT LOAD:

FIXED SEATING (TOP BOOTHS): **1820 SF / 56'-0" LINEAR FT. X 12' / 24" = 28**
 BENCH SEATING (BOTTOM BOOTHS): **127 SF / 9'-0" LINEAR FT. X 12' / 18" = 6**
 310 SF / 15 = 34
 DINING AREA: **121 SF / 5 = 25**
 KITCHEN / SERVICE AREAS: **1820 SF / 200 = 10**
 OCCUPIED SPACE: **863 SF = 0**
TOTAL OCCUPANTS: 103 OCCUPANTS

TOTAL INTERIOR SEATING:

74 SEATS

EGRESS:

EXIT WIDTH REQ.: **103 OCCUPANTS x 0.2 = 20.6"**
152" CLEAR *
 MAX DEAD-END CORRIDOR: **20'-0"**
 MAX TRAVEL DISTANCE TO EXIT: **200'-0"**

* NOTE:
 EXTERIOR EGRESS DOORS ARE TO BE PROVIDED WITH PANIC HARDWARE WHERE REQUIRED AND / OR SPECIFIED.

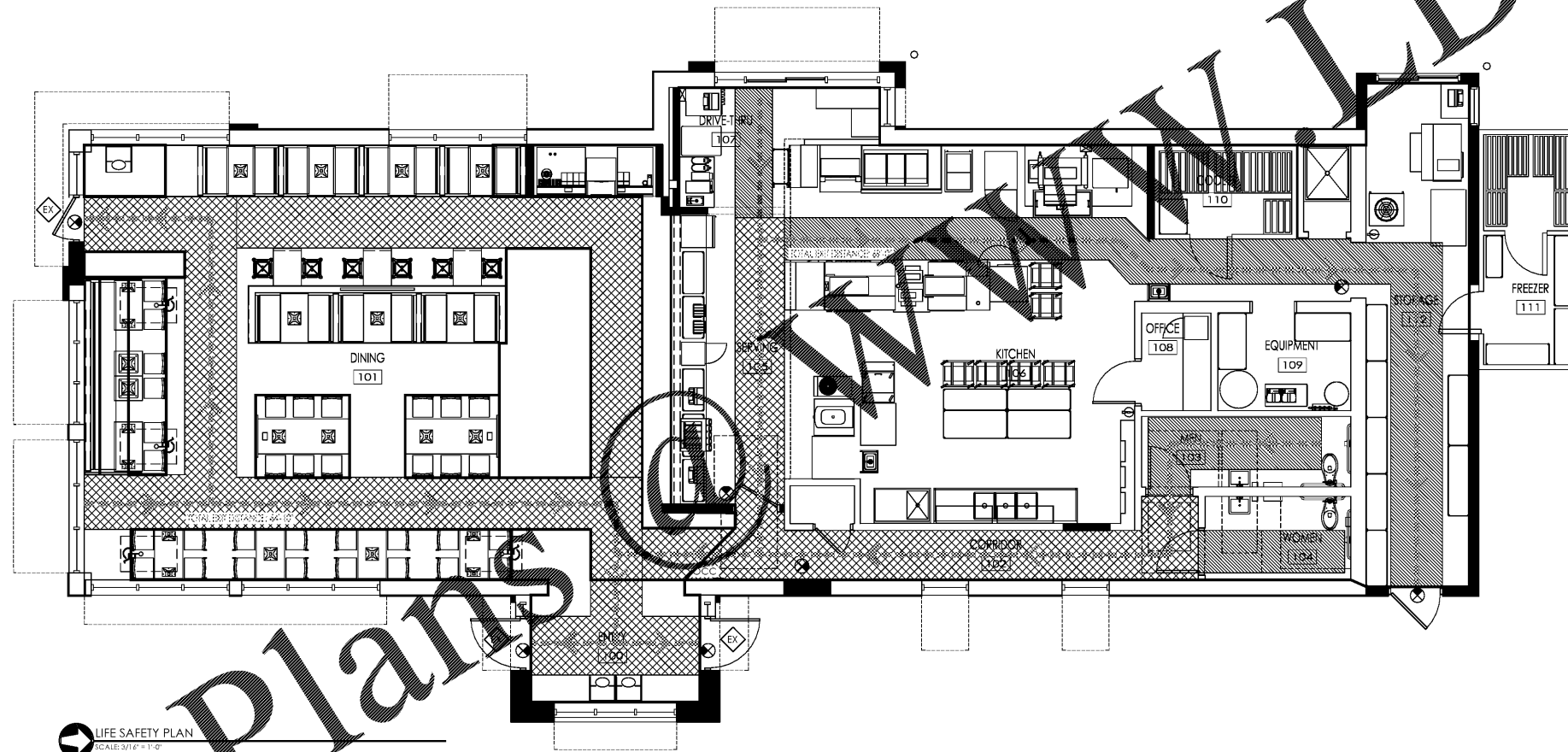
PLUMBING REQUIREMENTS:

OCCUPANT LOAD (50%): **103 OCCUPANTS 50% MALE = 52 50% FEMALE = 52**
 WATERCLOSETS REQUIRED (MEN): **(1 PER 75) 52/75=0.69 - 1 WATERCLOSET**
 1 WATERCLOSET
 WATERCLOSETS SUPPLIED (MEN): **1**
 URINALS SUPPLIED (MEN): **0**
 LAVATORIES REQUIRED (MEN): **(1 PER 200) 52/200=0.26 - 1 LAVATORY**
 1 LAVATORIES
 LAVATORIES PROVIDED (MEN): **1**
 WATERCLOSETS REQUIRED (WOMEN): **(1 PER 75) 52/75=0.69 - 1 WATERCLOSET**
 1 WATERCLOSET
 WATERCLOSETS SUPPLIED (WOMEN): **1**
 LAVATORIES REQUIRED (WOMEN): **(1 PER 200) 52/200=0.26 - 1 LAVATORY**
 1 LAVATORIES
 LAVATORIES PROVIDED (WOMEN): **1**
 DRINKING FOUNTAINS REQUIRED: **(1 PER 300) 52/300=0.17 - 1 DRINKING FOUNTAIN**
 DRINKING FOUNTAINS SUPPLIED: **1**
 SERVICE SINK REQUIRED: **1**
 SERVICE SINK SUPPLIED: **1**

NOTE: SEE DECOR & KITCHEN EQUIPMENT DRAWINGS FOR FURTHER DETAILS ON NEW SEATING & EQUIPMENT.

LIFE SAFETY LEGEND:

- EGRESS PATHWAYS
- ACCESSIBLE EXITS
- EXIST. FIRE EXTINGUISHER CABINET - PROVIDE / REPLACE IF MISSING OR IN NON-WORKING CONDITION
- EXIST. FIRE EXTINGUISHER TYPE "K" - PROVIDE / REPLACE IF MISSING OR IN NON-WORKING CONDITION
- EXISTING EXIT SIGNAGE - REPLACE / REPAIR IF IN NON-WORKING CONDITION
- EXIST. MAX. OCCUPANCY NOTIFICATION SIGN - PROVIDE IF MISSING
- 44" WIDE EGRESS PATH
- 36" WIDE EGRESS PATH (SEATING ON BOTH SIDES) - PATHWAYS AT KITCHEN - ENSURE THAT ALL PATHWAYS ARE CLEAR AND UNOBSTRUCTED



LIFE SAFETY PLAN
 SCALE: 3/16" = 1'-0"

NO.	DATE	BY	REVISION
01	05/11/18	BC/PERMIT SET	
02			
03			
04			
05			
06			
07			



PREMIER HOLDINGS OF GEORGIA, LLC
 3836 Stewart Road, Unit A
 Doraville, GA 30040

2124 Morris Avenue
 Roswell, GA 30078
 Phone: (770) 321-1781
 Fax: (770) 321-1788
 email: info@jmharch.com
 www.jmharch.com

James M. Huckestein
 architect AIA
 architecture • planning • interior design



PROJECT #1702615
 BURGER KING
 998 SUNSET BLVD.
 JESUP, GA 31545
 LIFE SAFETY PLAN

LS1.1

Order Plans