

THE FOLLOWING INFORMATION HAS BEEN TAKEN FROM THE 2010 ADA STANDARDS FOR ACCESSIBLE DESIGN AND THE ICC 117.1-2009. PLEASE REFER TO THESE DOCUMENT FOR REMAINING SECTIONS.

302 - FLOOR OR GROUND SURFACES

SECTION 302.2 - CARPET

A. CARPET OR CARPET TILE SHALL BE SECURELY ATTACHED AND SHALL HAVE A FIRM CUSHION PAD OR BACKING OR NOT CUSHION OR PAD. CARPET OR CARPET TILE SHALL HAVE A LEVEL, LOOP, STAIR TREAD, LEVEL, CUT PILE OR LEVEL CUT/JUNCTION PILE PILE TYPE. PILE HEIGHT SHALL BE 1/2" MAXIMUM. EXPOSED EDGES OF CARPET SHALL BE FASTENED TO FLOOR SURFACES AND SHALL HAVE TRENCH ON THE ENTIRE LENGTH OF THE EXPOSED EDGE. CARPET EDGE TRENCH SHALL COMPLY WITH 303.

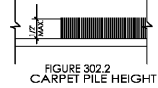


FIGURE 302.2 CARPET PILE HEIGHT

SECTION 302.3 - OPENINGS

OPENINGS IN FLOOR OR GROUND SURFACES SHALL NOT ALLOW PASSAGE OF A SPHERE MORE THAN 1/2" DIAMETER UNLESS AS ALLOWED IN 407.4.5, 407.4.3, 410.4.3, 410.4.5, 410.4.6. ELONGATED OPENINGS SHALL BE PLACED SO THAT THE LONG DIMENSION IS PERPENDICULAR TO THE DOMINANT DIRECTION OF TRAVEL.

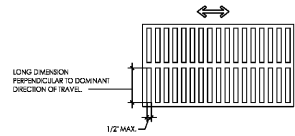


FIGURE 302.3 ELONGATED OPENINGS IN FLOOR OR GROUND SURFACES

303 - CHANGES IN LEVEL

SECTION 303.2 - VERTICAL

CHANGES IN LEVEL OF 1/4" HIGH MAXIMUM SHALL BE PERMITTED TO BE VERTICAL.

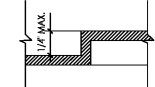


FIGURE 303.2 VERTICAL CHANGE IN LEVEL

SECTION 303.3 - BEVELED

CHANGES IN LEVEL BETWEEN 1/4" HIGH MINIMUM AND 1/2" HIGH MAXIMUM SHALL BE BEVELED WITH A SLOPE NOT STEEPER THAN 1:2. ADVISORY 303.3: BEVELED A CHANGE IN LEVEL OF 1/2" IS PERMITTED TO BE 1/4" VERTICAL PLUS 1/4" BEVELED. HOWEVER, IN NO CASE MAY BE COMBINED CHANGE IN LEVEL EXCEED 1/2". CHANGES IN LEVEL EXCEEDING 1/2" MUST COMPLY WITH 405 (RAMPS) OR 404 (CURB RAMPS).

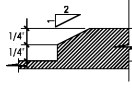
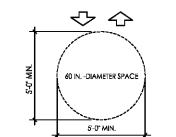


FIGURE 303.3 BEVELED CHANGE IN LEVEL

304 - TURNING SPACE

SECTION 304.3.1 - CIRCULAR SPACE

THE TURNING SPACE SHALL BE A SPACE OF 60" DIAMETER MINIMUM. THE SPACE SHALL BE PERMITTED TO INCLUDE ONE AND TWO CLEARANCE COMPLYING WITH 306.



SECTION 304.3.2 - T-SHAPED TURNING SPACE

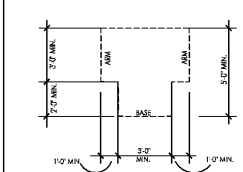


FIGURE 304.3.2 T-SHAPED TURNING SPACE

305 - CLEAR FLOOR OR GROUND SPACE

SECTION 305.3 - SIZE

THE CLEAR FLOOR OR GROUND SPACE SHALL BE 30" MINIMUM BY 48" MINIMUM.

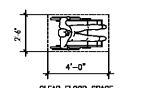


FIGURE 305.3 CLEAR FLOOR SPACE

SECTION 305.5 - POSITION

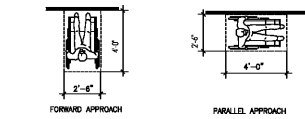


FIGURE 305.5 POSITION OF CLEAR FLOOR OR GROUND SPACE

SECTION 305.7 - MANEUVERING CLEARANCE

305.7.1 FORWARD APPROACH. ALL ALCOVES SHALL BE 36" WIDE MIN WHERE DEPTH EXCEEDS 24" INCHES.

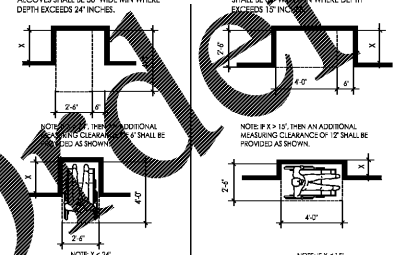


FIGURE 305.7 MANEUVERING CLEARANCE

306 - KNEE AND TOE CLEARANCE

SECTION 306.1 - GENERAL

WHERE SPACE BENEATH AN ELEMENT IS INCLUDED AS PART OF CLEAR FLOOR OR GROUND SPACE OR TURNING SPACE, THE SPACE SHALL COMPLY WITH 306. ADDITIONAL SPACE SHALL NOT BE PERMITTED BENEATH AN ELEMENT BUT SHALL NOT BE CONSIDERED AS PART OF THE CLEAR FLOOR OR GROUND SPACE OR TURNING SPACE.

ADVISORY 306.1: GENERAL CLEARANCES ARE MEASURED IN RELATION TO THE USABLE CLEAR FLOOR SPACE, NOT NECESSARILY TO THE VERTICAL SUPPORT OF AN ELEMENT. WHEN DETERMINING CLEARANCE UNDER AN OBJECT FOR REQUIRED TURNING OR MANEUVERING SPACE, CARE SHOULD BE TAKEN TO INSURE THE SPACE IS CLEAR OF ANY OBSTRUCTIONS.

SECTION 306.2 - TOE CLEARANCE

SPACE UNDER AN ELEMENT BETWEEN THE FINISH FLOOR OR GROUND AND 9 INCHES ABOVE THE FINISH FLOOR OR GROUND SHALL BE CONSIDERED TOE CLEARANCE AND SHALL COMPLY WITH 306.2.

SECTION 306.2.2 - MAXIMUM DEPTH

TOE CLEARANCE SHALL EXTEND 25 INCHES MAXIMUM UNDER AN ELEMENT.

SECTION 306.2.3 - MINIMUM REQUIRED DEPTH

WHERE TOE CLEARANCE IS REQUIRED AT AN ELEMENT AS PART OF A CLEAR FLOOR SPACE, THE TOE CLEARANCE SHALL EXTEND 17 INCHES MINIMUM UNDER THE ELEMENT.

SECTION 306.2.4 - ADDITIONAL CLEARANCE

SPACE EXTENDING GREATER THAN 6 INCHES BEYOND THE AVAILABLE KNEE CLEARANCE AT 9 INCHES ABOVE THE FINISH FLOOR OR GROUND SHALL NOT BE CONSIDERED TOE CLEARANCE.

SECTION 306.2.5 - WIDTH

TOE CLEARANCE SHALL BE 30 INCHES WIDE MINIMUM.

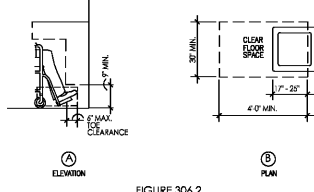


FIGURE 306.2 KNEE AND TOE CLEARANCE

SECTION 306.3 - KNEE CLEARANCE

SECTION 306.3.1 - GENERAL

SPACE UNDER AN ELEMENT BETWEEN 9 INCHES AND 27 INCHES ABOVE THE FINISH FLOOR OR GROUND SHALL BE CONSIDERED KNEE CLEARANCE AND SHALL COMPLY WITH 306.3.

SECTION 306.3.2 - MAXIMUM DEPTH

KNEE CLEARANCE SHALL EXTEND 25 INCHES MAXIMUM UNDER AN ELEMENT AT 9 INCHES ABOVE THE FINISH FLOOR OR GROUND.

SECTION 306.3.3 - MINIMUM REQUIRED DEPTH

WHERE KNEE CLEARANCE IS REQUIRED UNDER AN ELEMENT AS PART OF A CLEAR FLOOR SPACE, THE KNEE CLEARANCE SHALL BE 11 INCHES DEEP MINIMUM AT 9 INCHES ABOVE THE FINISH FLOOR OR GROUND, AND 9 INCHES DEEP MINIMUM AT 27 INCHES ABOVE THE FINISH FLOOR OR GROUND.

SECTION 306.3.4 - CLEARANCE REDUCTION

BETWEEN 9 INCHES AND 27 INCHES ABOVE THE FINISH FLOOR OR GROUND, THE KNEE CLEARANCE SHALL BE PERMITTED TO REDUCE AT A RATE OF 1 INCH IN DEPTH FOR 6 INCHES IN HEIGHT.

SECTION 306.3.5 - WIDTH

KNEE CLEARANCE SHALL BE 30 INCHES WIDE MINIMUM.

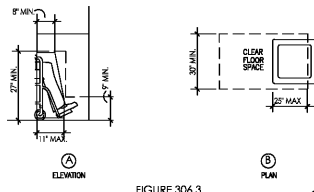


FIGURE 306.3 KNEE CLEARANCE

307 - PROTRUDING OBJECTS

SECTION 307.2 - PROTRUSION LIMITS

OBJECTS WITH LEADING EDGES BETWEEN 27" AND NOT MORE THAN 80" ABOVE THE FINISH FLOOR OR GROUND SHALL PROTRUDE A MAXIMUM HORIZONTALLY INTO THE CIRCULATION PATH.

EXCEPTION: HANDRAILS SHALL BE PERMITTED TO PROTRUDE 4-1/2" MAXIMUM.

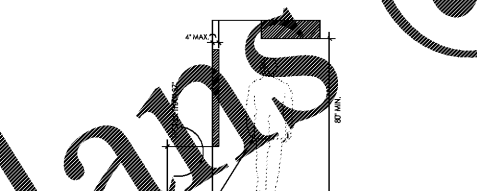


FIGURE 307.2 LIMITS OF PROTRUDING OBJECTS

SECTION 307.3 - POST-MOUNTED OBJECTS

POST-MOUNTED OBJECTS MOUNTED ON POSTS OR PLYONS SHALL OVERHANG CIRCULATION PATHS 12" MAX. WHEN LOCATED 27" MIN. AND 80" MAX. ABOVE THE FINISH FLOOR OR GROUND, WHERE A SIGN OR OTHER OBSTRUCTION IS MOUNTED BETWEEN POSTS OR PLYONS AND THE CLEAR DISTANCE BETWEEN THE POSTS OR PLYONS IS GREATER THAN 17", THE LOWEST EDGE OF SUCH SIGN OR OBSTRUCTION SHALL BE 27" MAX. OR 80" MIN. ABOVE THE FINISH FLOOR OR GROUND.

EXCEPTION: THE SLOPING PORTIONS OF HANDRAILS SERVING STAIRS AND RAMPS SHALL NOT BE REQUIRED TO COMPLY WITH 307.3.

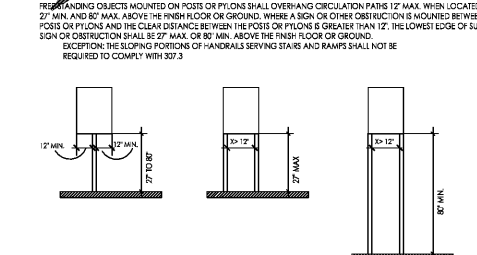


FIGURE 307.3 POST-MOUNTED PROTRUDING OBJECTS

307 - PROTRUDING OBJECTS, CONTINUED

SECTION 307.4 - VERTICAL CLEARANCE

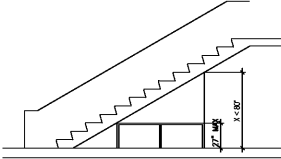


FIGURE 307.4 VERTICAL CLEARANCE

308 - REACH RANGES

SECTION 308.1 - GENERAL

REACH RANGES SHALL COMPLY WITH 308. ADVISORY 308.1: GENERAL. THE FOLLOWING TABLE PROVIDES GUIDANCE ON REACH RANGES FOR CHILDREN ACCORDING TO AGE WHERE BUILDING ELEMENTS SUCH AS COAT HOOKS, LOCKERS, OR OPERABLE PARTS ARE DESIGNED FOR USE PRIMARILY BY CHILDREN. THESE DIMENSIONS APPLY TO EITHER FORWARD OR SIDE REACH. ACCESSIBLE ELEMENTS AND OPERABLE PARTS DESIGNED FOR ADULT USE OR CHILDREN OVER AGE 12 CAN BE LOCATED OUTSIDE THESE RANGES BUT MUST BE WITHIN THE ADULT REACH RANGES REQUIRED BY 308.

CHILDREN'S REACH RANGES			
FORWARD OR SIDE REACH	AGES 3 AND 4	AGES 5 THRU 8	AGES 9 THRU 12
HIGH (MAX)	36 in	40 in	44 in
LOW (MAX)	20 in	18 in	16 in

SECTION 308.2 - FORWARD REACH

SECTION 308.2.1 - UNOBSTRUCTED
WHERE A FORWARD REACH IS UNOBSTRUCTED, THE HIGH FORWARD REACH SHALL BE 48" MAX. AND THE LOW REACH SHALL BE 15" MIN. ABOVE THE FINISH FLOOR OR GROUND.

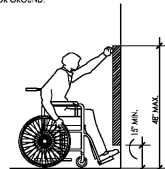


FIGURE 308.2.1 UNOBSTRUCTED FORWARD REACH

SECTION 308.2.2 - OBSTRUCTED HIGH REACH

WHERE A FORWARD REACH IS OVER AN OBSTRUCTION, THE CLEAR FLOOR SPACE SHALL BE EXTENDED BEYOND THE OBSTRUCTION A DISTANCE NOT LESS THAN THE REQUIRED REACH DEPTH OVER THE OBSTRUCTION. THE HIGH FORWARD REACH SHALL BE 48" MAX. WHERE THE REACH DEPTH IS 27" MAX. WHERE THE REACH DEPTH EXCEEDS 27", THE HIGH FORWARD REACH SHALL BE 48" MAX. AND THE REACH DEPTH SHALL BE 27" MAX.

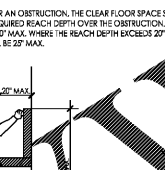


FIGURE 308.2.2 OBSTRUCTED HIGH FORWARD REACH

SECTION 308.3 - SIDE REACH

SECTION 308.3.1 - UNOBSTRUCTED

WHERE A CLEAR FLOOR OR GROUND SPACE ALLOWS A PARALLEL APPROACH TO AN ELEMENT AND THE SIDE REACH IS UNOBSTRUCTED, THE HIGH SIDE REACH SHALL BE 48" MAX. AND THE LOW SIDE REACH SHALL BE 15" MIN. ABOVE THE FINISH FLOOR OR GROUND.

EXCEPTION 1: AN OBSTRUCTION SHALL BE PERMITTED BETWEEN THE CLEAR FLOOR OR GROUND SPACE AND THE ELEMENT WHERE THE DEPTH OF THE OBSTRUCTION IS 10" MAX.

EXCEPTION 2: OPERABLE PARTS OF FUEL DISPENSERS SHALL BE PERMITTED TO BE 54" MAX. MEASURED FROM THE SURFACE OF THE VEHICULAR WAY WHERE FUEL DISPENSERS ARE INSTALLED ON EXISTING CURBS.

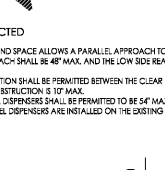


FIGURE 308.3.1 UNOBSTRUCTED SIDE REACH

SECTION 308.3.2 - OBSTRUCTED HIGH REACH

WHERE A CLEAR FLOOR OR GROUND SPACE ALLOWS A PARALLEL APPROACH TO AN ELEMENT AND THE HIGH SIDE REACH IS OVER AN OBSTRUCTION, THE HIGH SIDE REACH SHALL BE 48" MAX. AND THE DEPTH OF THE OBSTRUCTION SHALL BE 10" MAX. THE HIGH SIDE REACH SHALL BE 48" MAX. FOR A REACH DEPTH OF 10" MAX. WHERE THE REACH DEPTH EXCEEDS 10", THE HIGH SIDE REACH SHALL BE 48" MAX. FOR A REACH DEPTH OF 24" MAX.

EXCEPTION 1: THE TOP OF WASHING MACHINES AND CLOTHES DRYERS SHALL BE PERMITTED TO BE 36" MAXIMUM ABOVE THE FINISH FLOOR.

EXCEPTION 2: OPERABLE PARTS OF FUEL DISPENSERS SHALL BE PERMITTED TO BE 54" MAX. MEASURED FROM THE SURFACE OF THE VEHICULAR WAY WHERE FUEL DISPENSERS ARE INSTALLED ON EXISTING CURBS.

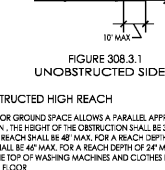


FIGURE 308.3.2 OBSTRUCTED HIGH SIDE REACH

309 - OPERABLE PARTS

SECTION 309.2 - CLEAR FLOOR SPACE

A CLEAR FLOOR OR GROUND SPACE COMPLYING WITH 305 SHALL BE PROVIDED.

SECTION 309.4 - OPERATION

OPERABLE PARTS SHALL BE OPERABLE WITH ONE HAND AND SHALL NOT REQUIRE TIGHT GRASPING, MACHING, OR TWISTING OF THE WRIST. THE FORCE REQUIRED TO ACTIVATE OPERABLE PARTS SHALL BE 5 POUNDS MAX.

402-403 - ACCESSIBLE ROUTES

SECTION 402.2 - COMPONENTS

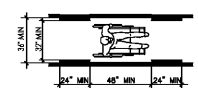
ACCESSIBLE ROUTES SHALL COMPLY WITH ONE OR MORE OF THE FOLLOWING COMPONENTS: WALKING SURFACES WITH A RUNNING SLOPE NOT STEEPER THAN 1:20, DOORWAYS, RAMPS, CURB RAMPS INCLUDING THE FLARED SIDES, ELEVATORS, AND PLATFORM LIFTS. ALL COMPONENTS OF AN ACCESSIBLE ROUTE SHALL COMPLY WITH THE APPLICABLE REQUIREMENTS OF CHAPTER 4.

SECTION 403.3 - SLOPE

THE RUNNING SLOPE OF WALKING SURFACES SHALL NOT BE STEEPER THAN 1:20. THE CROSS SLOPE OF WALKING SURFACES SHALL NOT BE STEEPER THAN 1:48.

SECTION 403.5.1 - CLEAR WIDTH

EXCEPT AS PROVIDED IN 403.5.2 AND 403.5.3, THE CLEAR WIDTH OF WALKING SURFACES SHALL BE 36" MINIMUM. EXCEPTION: THE CLEAR WIDTH SHALL BE PERMITTED TO BE REDUCED TO 32" MIN. FOR A LENGTH OF 24" MAX. PROVIDED THAT REDUCED WIDTH SEGMENTS ARE SEPARATED BY SEGMENTS THAT ARE 48" LONG MIN. AND 36" WIDE MIN.



SECTION 403.5.3 - PASSING SPACES

AN ACCESSIBLE ROUTE WITH A CLEAR WIDTH LESS THAN 67" SHALL PROVIDE PASSING SPACES AT INTERSECTIONS OF 7 FT 11" MAX. PASSING SPACES SHALL BE EITHER A SPACE 67" MIN. BY 67" MIN. OR AN INTERSECTION OF TWO WALKING SURFACES PROVIDING A SHARED SPACE COMPLYING WITH 304.3.2 WHERE THE BASE AND WINGS OF THE SHARED SPACE ARE 48" MIN. BEYOND THE INTERSECTION.

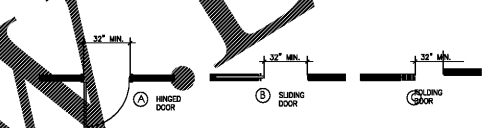
404 - DOORS, DOORWAYS AND GATES

SECTION 404.2.2 - DOUBLE LEAF DOORS AND GATES

AT LEAST ONE OF THE ACTIVE LEAVES OF DOORWAYS WITH TWO LEAVES SHALL COMPLY WITH 404.2.3 AND 404.2.4.

SECTION 404.2.3 - CLEAR WIDTH

DOOR OPENINGS SHALL PROVIDE A CLEAR WIDTH OF 32" MIN. CLEAR OPENINGS IN DOORWAYS WITH SLIDING DOORS SHALL BE MEASURED BETWEEN THE BOTTOM OF THE DOOR AND THE TOP. WITH THE DOOR OPEN TO 90 DEGREES, OPENINGS MORE THAN 24" DEEP SHALL PROVIDE A CLEAR OPENING OF 36" INCHES MIN. THERE SHALL BE NO PROTRUSIONS INTO THE REQUIRED CLEAR OPENING WIDTH LOWER THAN 27" ABOVE THE FINISH FLOOR OR GROUND. CLEAR OPENINGS EXCEED 4' EXCEPT IN 1. IN ALTERNATE SITUATIONS, A CLEAR WIDTH OF 48" MAX. INTO THE REQUIRED CLEAR WIDTH SHALL BE PERMITTED FOR LATCH SIDE STOP. DOOR CLOSERS AND DOOR STOP SHALL BE PERMITTED TO BE 15" MIN. ABOVE FINISH FLOOR OR GROUND.



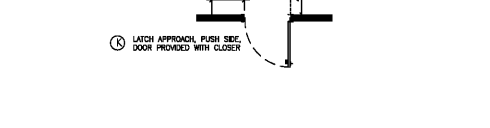
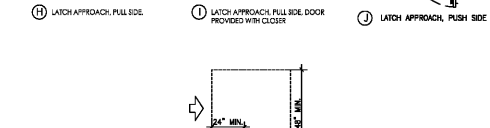
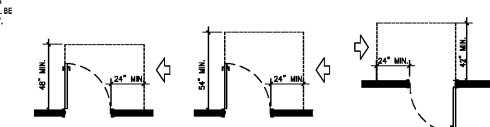
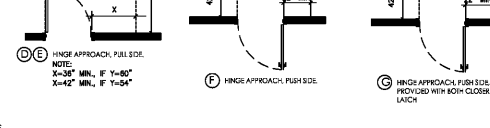
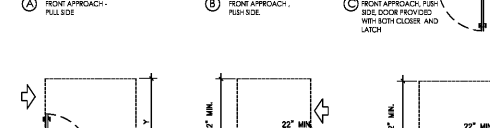
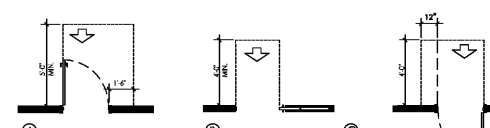
SECTION 404.2.4 - MANEUVERING CLEARANCES

MINIMUM MANEUVERING CLEARANCES AT DOORS AND GATES SHALL COMPLY WITH 404.2.4. MANEUVERING CLEARANCES SHALL EXTEND THE FULL WIDTH OF THE DOORWAY AND THE REQUIRED LATCH SIDE OR HINGE SIDE CLEARANCE.

EXCEPTION: ENTRY DOORS TO HOSPITAL PATIENT ROOMS SHALL NOT BE REQUIRED TO PROVIDE THE CLEARANCE BEYOND THE LATCH SIDE OF THE DOOR.

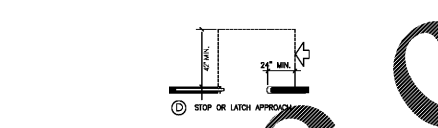
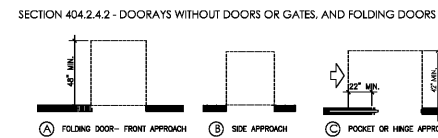
SECTION 404.2.4.1 - MANEUVERING CLEARANCE

APPROACH DIRECTION	DOOR SIDE	PERPENDICULAR TO DOORWAY	PARALLEL TO DOORWAY
FROM FRONT	PULL	60"	18"
FROM FRONT	PUSH	48"	0"
FROM HINGE SIDE	PULL	60"	36"
FROM HINGE SIDE	PUSH	54"	42"
FROM LATCH SIDE	PULL	42"	22"
FROM LATCH SIDE	PUSH	48"	24"
FROM LATCH SIDE	PUSH	42"	24"



404 - DOORS, DOORWAYS AND GATES, CONTINUED

SECTION 404.2.4.2 - DOORWAYS WITHOUT DOORS OR GATES, AND FOLDING DOORS

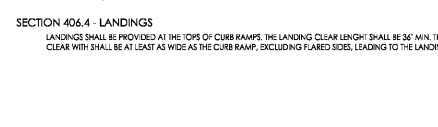
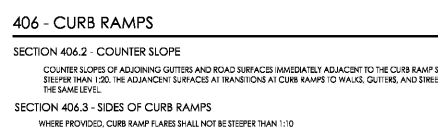
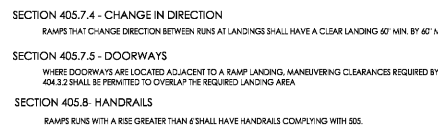
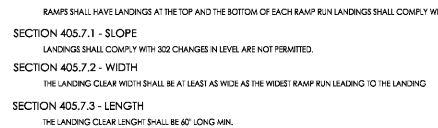
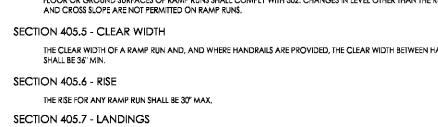
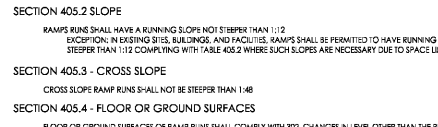
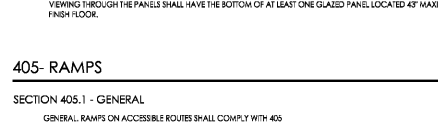
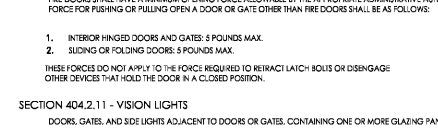
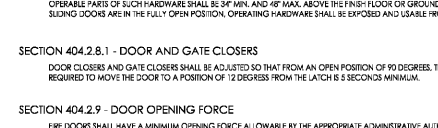
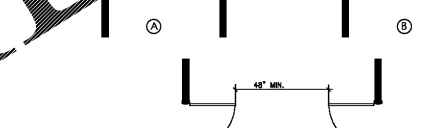


SECTION 404.2.5 - THRESHOLDS

THRESHOLDS, IF PROVIDED AT DOORWAYS, SHALL BE A MAX. RAISED THRESHOLD AND CHANGES IN LEVEL AT DOORWAYS SHALL COMPLY WITH 302.3.

SECTION 404.2.6 - DOORS, GATES AND GATES IN PART

THE DISTANCE BETWEEN THE CENTER OF PROVIDED DOOR SERIES AND GATES SHALL BE 48" MINIMUM PLUS THE WIDTH OF THE DOORS OR GATES SERVING THAT SPACE.



CREATED BY: [Name] | CHECKED BY: [Name] | DATE: [Date] | PROJECT: [Project Name]

PROJECT #1702015 | BURGER KING | 998 SUNSET BLVD., JESUP, GA 31545

DATE: 01/05/17 | BY: PERMIT SET | NO. 01 | 02 | 03 | 04 | 05 | 06 | 07

PREMIER HOLDINGS OF GEORGIA, LLC | 3636 Stewart Road, Unit A | Doraville, GA 30046

2124 Morris Avenue | Suite 100 | Roswell, GA 30076 | Phone: (770) 233-1221 | Fax: (770) 232-1778 | Email: info@jamesm-huckestein.com | www.jamesm-huckestein.com

James M. Huckestein architect AIA

architecture • planning • interior design

05.11.18

STATE OF GEORGIA | JAMES M. HUCKESTEIN | REGISTERED ARCHITECT

IMAGE 2020 - JULY 2012 STANDARDS

ADA GUIDELINES

T1.3