

DOOR NO.	LOCATION	SIZE	DOORS		FRAME		DETAILS			HARDWARE SET	DOOR FINISH	NOTES
			TYPE	MATERIAL	TYPE	MATERIAL	HEAD	JAMB	SILL			
100	ENTRY	(PAIR) 3'-0"x7'-0"x1 3/4"	6/A102	EXISTING	--	EXISTING	--	--	--	SET 1	EXIST.	EXISTING DOOR TO REMAIN
102	RESTROOM	3'-0"x7'-0"x1 3/4"	7/A102	S.C.	4/A102	STEEL	1/A102	2/102	--	SET 3	PAINT	PAINT FRAME SW 7036
103	EXIT	(PAIR) 3'-8"x7'-0"x1 3/4"	5/A102	EXISTING	--	EXISTING	--	--	--	SET 2	EXIST.	EXISTING DOOR TO REMAIN
104	OFFICE	3'-0"x7'-0"x1 3/4"	7/A102	S.C.	4/A102	STEEL	1/A102	2/102	--	SET 3	PAINT	PAINT DOOR & FRAME SW 7036

HARDWARE SETS
A. FURNISH THE FOLLOWING HARDWARE SETS WITH THE SPECIFIED ITEMS. HARDWARE SET REQUIRED IS INDICATED IN THE DOOR SCHEDULE

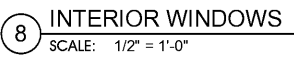
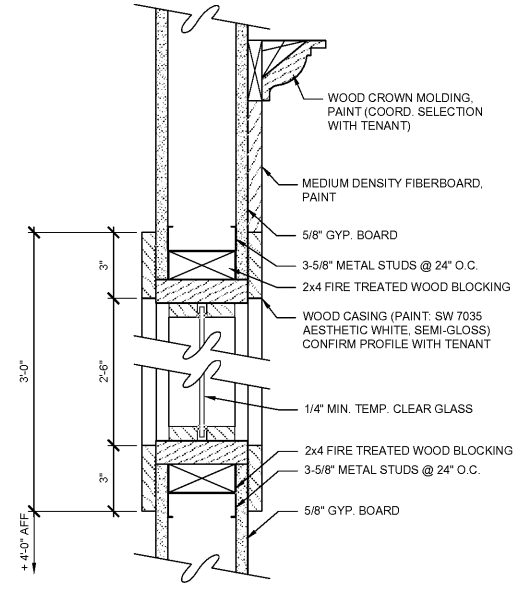
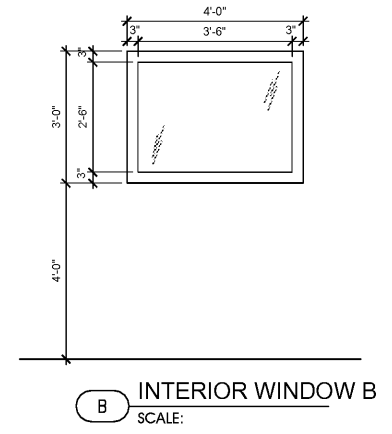
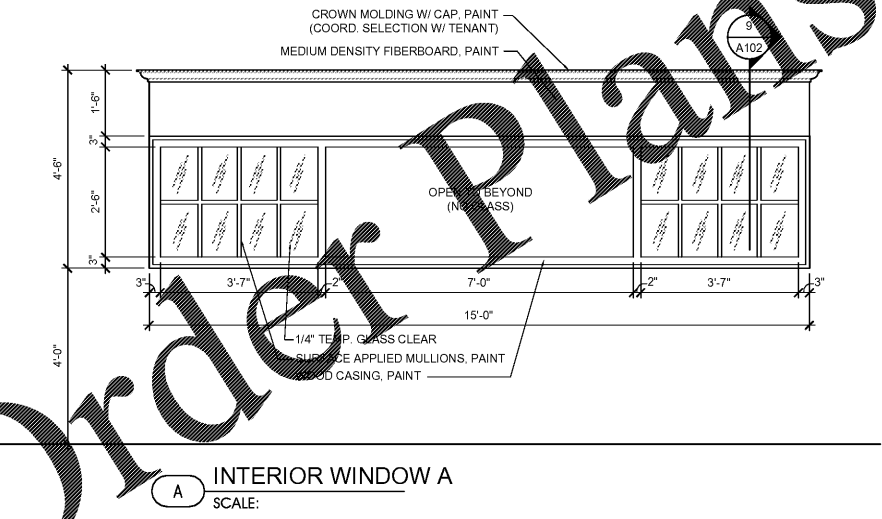
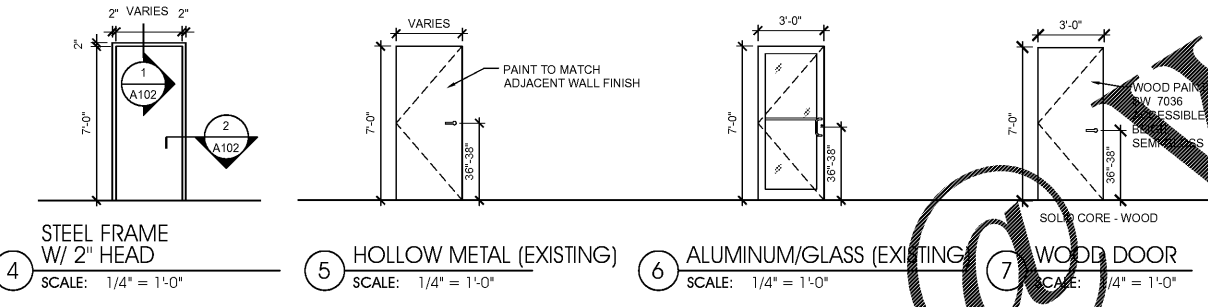
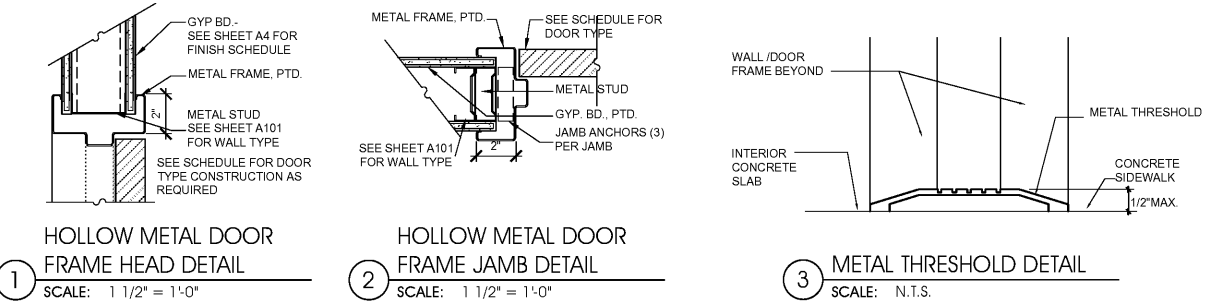
- HARDWARE SET 1 (EXISTING)**
3 SETS BUTT HINGES, TOP, BOTTOM AND INTERMEDIATE
1 LOCKSET - STOREFRONT LOCK
1 OVERHEAD CLOSER
1 SET WEATHERSTRIPPING AND SWEEP
1 THRESHOLD
1 SET OFFSET PUSH/PULL
- HARDWARE SET 2 (EXISTING)**
3 SETS BUTT HINGES, TOP, BOTTOM AND INTERMEDIATE
1 DETEX V40 PANIC HARDWARE - KEYED
1 OVERHEAD CLOSER
1 SET WEATHERSTRIPPING AND SWEEP
1 THRESHOLD
2 KICKPLATES (INTERIOR)
** HARDWARE TO ALWAYS BE UNLOCKED FROM THE PATH OF EGRESS SIDE.
- HARDWARE SET 3**
3 SETS BUTT HINGES, TOP, BOTTOM AND INTERMEDIATE
1 LOCKSET - PRIVACY LOCK
1 OVERHEAD CLOSER
1 DOOR STOP - WALL TYPE

DOOR NOTES

STEEL DOORS AND FRAMES
STANDARDS:
IN ADDITION TO OTHER SPECIFIED REQUIREMENTS, COMPLY WITH THE STEEL DOOR INSTITUTE "RECOMMENDED SPECIFICATIONS FOR STANDARD STEEL DOORS AND FRAMES" (SDI-100), FOR THE FOLLOWING CLASSIFICATIONS:
INTERIOR DOORS: (IF REQUIRED) SDI-100, GRADE III, HEAVY-DUTY, MODEL 1, MINIMUM 18-GAGE FACES.
SUBMITTALS: WITH MANUFACTURER'S STANDARD DETAILS AND SPECIFICATIONS FOR STEEL DOORS AND FRAMES, SUBMIT SHOP DRAWINGS SHOWING APPLICATIONS TO PROJECT, AS REQUIRED.
MANUFACTURER:
ONE OF THE FOLLOWING:
ALLIED STEEL PRODUCTS, INC.
ARMWELD/DIV. AMERICAN WELDING & MFG. CO.
CECO CORP.
CURRIES MFG., INC.
DITCO PROD. DIV.
FENESTRA CORP.
MESKER INDUSTRIES, INC.
PIONEER BUILDERS PRODUCTS CORP./DIV. CORE INDUSTRIES, INC.
STEELCRAFT/DIV. AMERICAN STANDARD CO.
TRUSSBILT, INC.
REPUBLIC BUILDERS PRODUCTS CORP./SUBS. REPUBLIC STEEL
FIRE-RATED ASSEMBLIES: (IF REQUIRED) PROVIDE UNITS THAT DISPLAY APPROPRIATE UL OR FM LABELS FOR FIRE-RATING INDICATED.
MATERIALS: STEEL DOORS AND FRAMES: HOT ROLLED, PICKLED AND OILED PER ASTM A 569 AND A 568, COLD-ROLLED PER ASTM A 583 AND A 568
ANCHORS AND ACCESSORIES: MANUFACTURER'S STANDARD UNITS. USE GALVANIZED ITEMS FOR USE IN EXTERIOR WALLS. APPLYING WITH ASTM A 153.
FABRICATION: FABRICATE UNITS TO BE HIND, NEAT APPEARANCE, AND FREE FROM DEFECTS, WARP OR BUCKLE. WELD EXPANDED JOINTS CONTINUOUSLY, GRIND, DRESS AND MAKE SMOOTH, FINISH AND INVISIBLE.
PREPARE STEEL DOORS AND FRAMES TO RECEIVE MORTISED AND CONCEALED FINISH HARDWARE INCLUDING CUTOUTS, REINFORCING, DRILLING AND TAPPING, COMPLYING WITH ANSI A 115 "SPECIFICATIONS FOR DOOR AND FRAME PREPARATION FOR HARDWARE".
REINFORCE UNITS TO RECEIVE SURFACE-APPLIED FINISH HARDWARE TO BE FIELD APPLIED.
INSTALL FINISH HARDWARE AS INDICATED, OR IF NOT INDICATED, PROVIDE RECOMMENDED LOCATIONS FOR BUILDER'S HARDWARE".
SHOP PAINT EXPOSED SURFACES OF DOORS AND FRAME UNITS, INCLUDING GALVANIZED SURFACES, USING MANUFACTURER'S STANDARD BAKED-ON RUST INHIBIT PRIMER.
DOORS: COMPLY WITH SDI-100, OF THE TYPES AND STYLES INDICATED, FOR MATERIALS QUALITY, METAL GAGES, AND CONSTRUCTION DETAILS.
FRAMES: COMPLY WITH SDI-100, OF THE TYPES AND STYLES INDICATED, FOR MATERIALS QUALITY, METAL GAGES AND CONSTRUCTION DETAILS.
PROVIDE STANDARD HOLLOW METAL FRAMES FOR DOORS, TRANSOMS, SIDELIGHTS, BORROWED LIGHTS, AND OTHER OPENINGS AS INDICATED.
PREPARE FRAMES TO RECEIVE 2 SILENCERS ON STRIKE JAMBS OF SINGLE-SWING FRAMES AND ON HEADS OF DOUBLE-SWING FRAMES.
PROVIDE 26-GAGE STEEL PLASTER GUARDS OR MORTAR BOXES, WELDED TO FRAME, AT BACK OF HARDWARE CUTOUTS WHERE INSTALLED IN CONCRETE, MASONRY OR PLASTER OPENINGS.
INSTALLATION: INSTALL HOLLOW-METAL UNITS IN ACCORDANCE WITH MANUFACTURER'S INSTRUCTIONS AND FINAL SHOP DRAWINGS (IF ANY). FIT DOORS TO FRAMES, AND FLOORS WITH CLEARANCES SPECIFIED IN SDI-100.
INSTALL FIRE-RATED UNITS IN ACCORDANCE WITH NFPA STD. NO. 80.
FINISH HARDWARE IS SPECIFIED IN ANOTHER DIVISION-8 SECTION.

DOOR NOTES

WOOD DOORS
STANDARDS: COMPLY WITH REQUIREMENTS OF ANSINWMA I.S. 1 AND SECTION 1 300 OF AIA "ARCHITECTURAL WOODWORK QUALITY STANDARDS" EXCEPT AS OTHERWISE INDICATED.
SUBMITTALS: IN ADDITION TO THE PRODUCT DATA, SUBMIT THE FOLLOWING:
SAMPLES FOR EACH TYPE OF DOOR CONSTRUCTION, FACE MATERIAL AND FINISH REQUIRED.
PRODUCT WARRANTY ON DOOR MANUFACTURER'S STANDARD FORM, SIGNED BY MANUFACTURER, INSTALLER AND CONTRACTOR, AGREEING TO REPAIR OR REPLACE DEFECTIVE DOORS AS DEFINED BY REFERENCED STANDARDS.
MANUFACTURERS: SUBJECT TO COMPLIANCE WITH REQUIREMENTS, PROVIDE WOOD DOORS BY ONE OF THE FOLLOWING:
ALGOMA HARDWOODS, INC.
BUELL DOOR CO.
CALWOOD DOOR CO./TIMBERLAND IND., INC.
EGGERS
HUN-MAN DOOR MFG. CO.
KRAMER CO.
IPKOR DOOR CO.
WEY WAUSE DOOR COMPANY
APPROX. EQUAL
GENERAL WOOD DOOR PRODUCT REQUIREMENTS:
EXPOSED SURFACES: SAME EXPOSED SURFACE MATERIAL ON BOTH FACES OF EACH DOOR, EXCEPT AS OTHERWISE INDICATED.
TRANSOM AND SIDE MATERIALS: MATCH QUALITY, CONSTRUCTION AND APPEARANCE OF ASSOCIATED WOOD DOORS.
LOUVERS: MANUFACTURER'S STANDARD LOUVERS OF TYPE, MATERIAL AND SIZE INDICATED.
FIRE-RATED DOORS: LABELED AND LISTED WITH RATING REQUIRED BY A TESTING AND INSPECTION AGENCY ACCEPTABLE TO AUTHORITY HAVING JURISDICTION.
INTERIOR FLUSH DOORS:
CORE: SOLID CORE OR HOLLOW CORE, AS SHOWN ON THE DRAWINGS. HOLLOW CORE DOORS SHALL BE IHC WHERE REQUIRED BY FINISH HARDWARE.
FACES FOR TRANSPARENT FINISH: AS SHOWN ON THE DRAWINGS.
FACES FOR OPAQUE FINISH: ANY CLOSED-GRAIN HARDWOOD OF MILL OPTION.
GRADE: CUSTOM.
FIRE-RATED SOLID-CORE DOORS:
FACES AND AWI-GRADE: MATCH FACES AND GRADE OF NON-RATED DOORS IN SAME AREA OF BUILDING.
CORE CONSTRUCTION: MANUFACTURER'S STANDARD CORE CONSTRUCTION REQUIRED TO PROVIDE FIRE-RESISTANCE RATING INDICATED.
EDGE CONSTRUCTION: MANUFACTURER'S STANDARD LAMINATED EDGE CONSTRUCTION FOR IMPROVED SCREW-HOLDING ABILITY.
FACTORY FINISHING: (IF USED)
SHOP-PRIME DOORS FOR OPAQUE FINISH WITH ONE COAT OF WOOD PRIMER.
PRE-FINISH WOOD DOORS FOR TRANSPARENT FINISH WITH MANUFACTURER'S STANDARD FINISHING SYSTEM AS SELECTED BY ARCHITECT FROM MANUFACTURER'S STANDARDS FOR STAIN COLOR (IF ANY) AND GLOSS.
PRE-FINISH WOOD DOORS FOR OPAQUE FINISH WITH MANUFACTURER'S STANDARD PAINT SYSTEM IN COLOR INDICATED, OR IF NOT INDICATED, AS SELECTED BY ARCHITECT.
PRE-FITTING AND PREPARATION FOR HARDWARE:
PRE-FIT AND PRE-MACHINE WOOD DOORS AT FACTORY. COORDINATE WITH FINISH HARDWARE AND DOOR FRAME REQUIREMENTS.
INSTALLATION:
JOB-FIT DOORS: FIT DOORS TO FRAMES WITH UNIFORM CLEARANCES AND BEVELS TO DIMENSIONS INDICATED IN REFERENCED STANDARDS. MACHINE DOORS FOR HARDWARE INDICATED. SEAL CUT SURFACES AFTER FITTING AND MACHINING.
INSTALL DOORS TO COMPLY WITH MANUFACTURER'S INSTRUCTIONS.



SEAL:
THIS DOCUMENT IS NOT FOR CONSTRUCTION
UNLESS THE ARCHITECT OR ENGINEER'S
SIGNATURE AND SEAL APPEAR BELOW

04.04.18 PERMIT SUBMIT
03.26.18 OWNER REVIEW
03.23.18 OWNER REVIEW
NO DATE REMARKS
REVISIONS

SHERWIN
WILLIAMS
8909 IMMOKALEE ROAD
NAPLES, FL 34120

PROJECT NO: 2018.0102
DATE: 03.19.18

A102
DOOR & WINDOW
SCHEDULE & DETAILS

CHECKED: KCP DRAWN: MB

Order Plans

WWW.ONLINE.COM

COPYRIGHT © 2018 INTERPLAN, LLC. REPRODUCE OR TRANSMIT IN ANY FORM OR BY ANY MEANS, WITHOUT PERMISSION IN WRITING IS PROHIBITED.