

C POOL DETAIL
SCALE: 1"=1'-0"

B TYPICAL DETAIL
SCALE: 1 1/2"=1'-0"

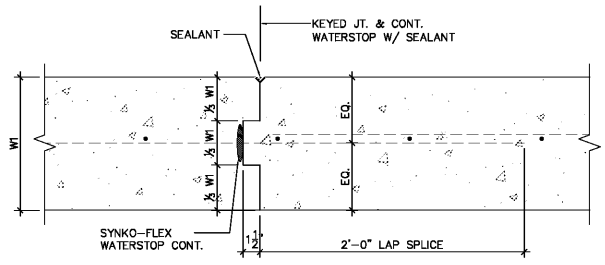
A POOL DETAIL
SCALE: 1 1/2"=1'-0"

D POOL DETAIL
SCALE: 1"=1'-0"

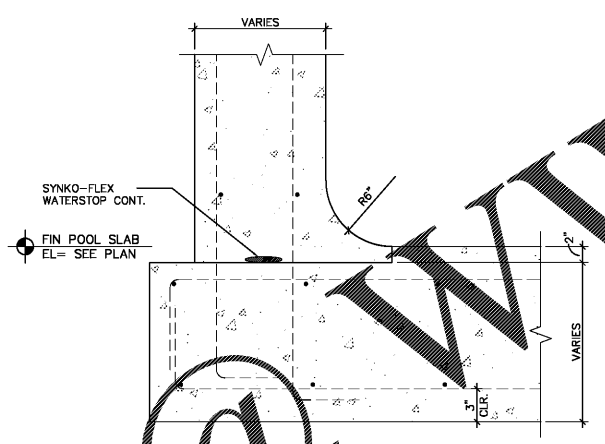
E TYPICAL DETAIL
SCALE: 1 1/2"=1'-0"

F TYPICAL DETAIL
SCALE: 1 1/2"=1'-0"

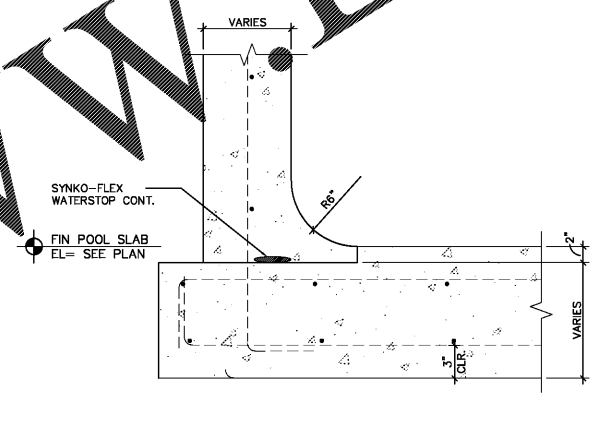
E POOL DETAIL
SCALE: 1"=1'-0"



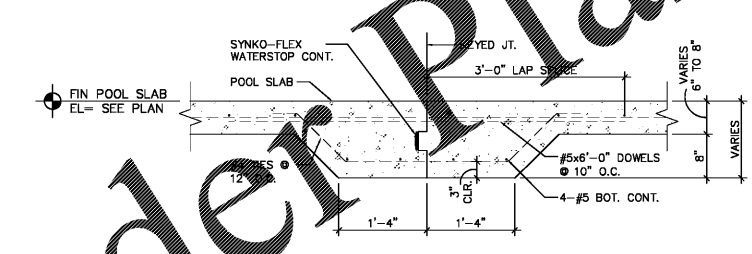
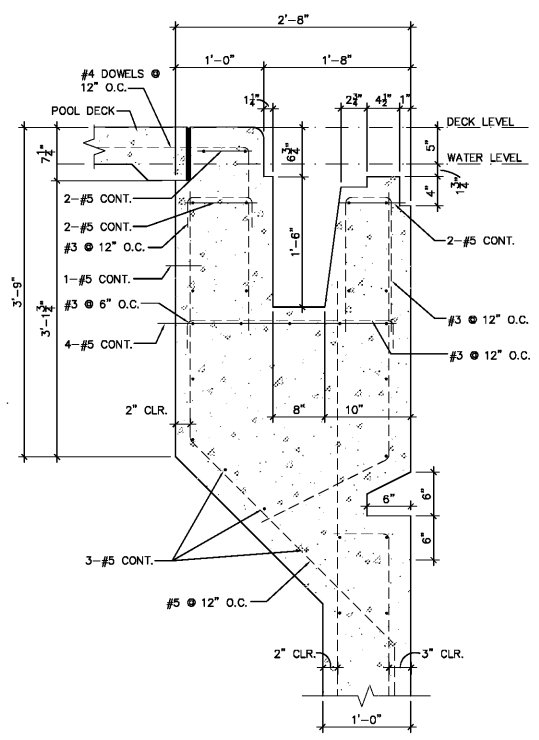
H TYPICAL WALL CONSTRUCTION JOINT
SCALE: 1 1/2"=1'-0"



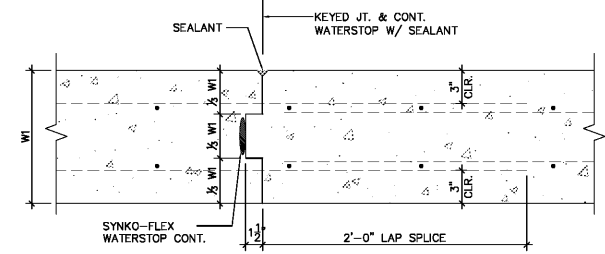
G TYPICAL DETAIL
SCALE: 1 1/2"=1'-0"



F TYPICAL DETAIL
SCALE: 1 1/2"=1'-0"



K POOL CONTROL JOINT DETAIL, TYP
SCALE: 3/4"=1'-0"



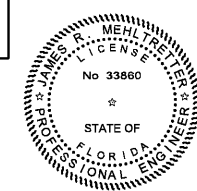
J TYPICAL WALL CONSTRUCTION JOINT
SCALE: 1 1/2"=1'-0"

THE MINIMUM CLEAR COVER FOR REINFORCEMENT BARS SHALL BE ONE BAR DIAMETER OR THE VALUES TABULATED BELOW, WHICHEVER IS THE GREATER.

POOL ELEMENTS	COVER
TO FORMED SURFACES NOT EXPOSED TO POOL	2"
TO FORMED SURFACES EXPOSED TO POOL	3"
SURFACE EXPOSED TO EARTH	3"

TYPICAL CONCRETE COVER FOR FOR REINFORCING BARS AT POOL

3-064A



Digitally signed by JAMES R MEHLRETTER
DN:
OID.0.9.2342.19200300.100.1.1= A0109800000158F46F2F6000 00CB7.CN=JAMES R MEHLRETTER, O=IdenTrust ACES Unaffiliated Individual, C=US
Date: 2017.12.15 12:55:15-05'00'

MASTER CONSULTING ENGINEERS, INC.
STRUCTURAL CONSULTANTS
5523 WEST CYPRUSS ST., #200
TAMPA, FLORIDA 33607
813.287.3600 FAX 813.287.3622
www.mycen.com

Scale: AS SHOWN
Designed by: SL
Drawn by: JW
Checked by: JRM
Date: DECEMBER 2017
Project No. 48285014

SHEET
SP4.4

BUTLER PARK
AQUATIC CENTER
CITY OF NORTHPORT, FL

POOL FOUNDATION
DETAILS



Kimley-Horn
2201 West Royal Lane, Suite 275, Irving, Texas 75063
P.O. Box 2000, Fort Worth, Texas 76101
FLORIDA REGISTERED ENGINEERING FIRM #89
FLORIDA REGISTERED LANDSCAPE ARCHITECTURE FIRM LC-C000219
© 2017 KIMLEY-HORN AND ASSOCIATES, INC.

Order Plans