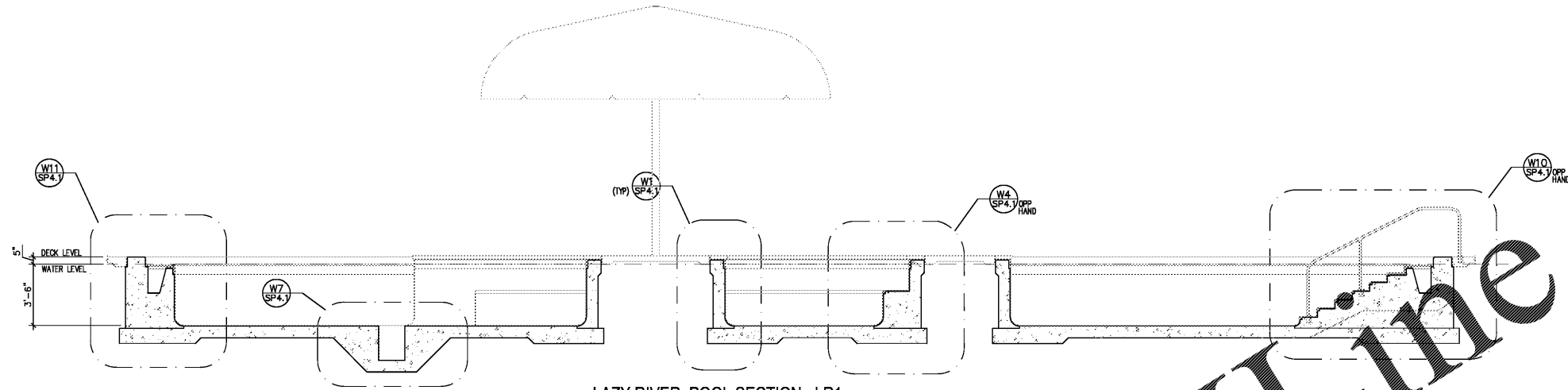
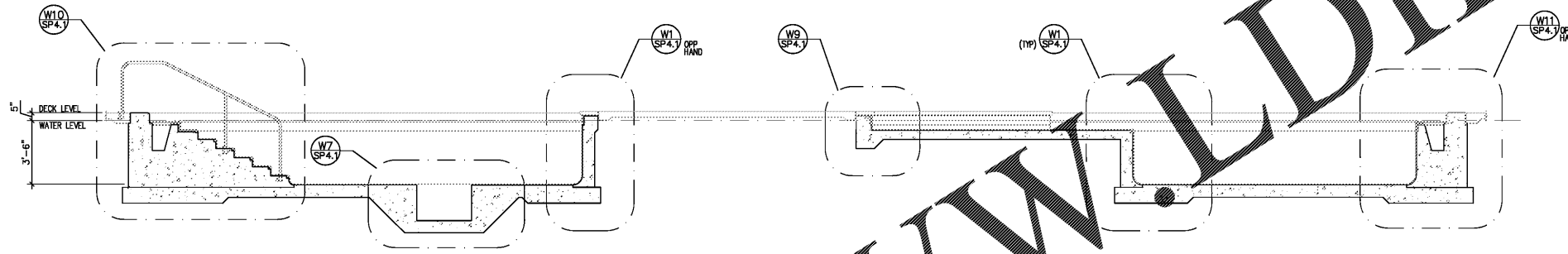


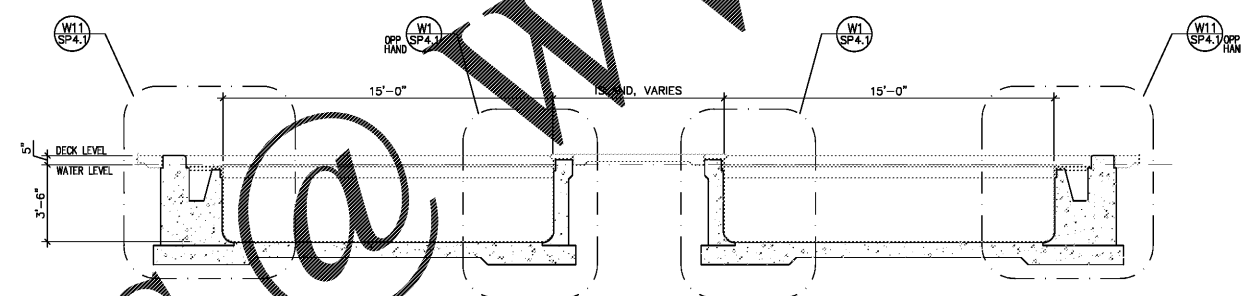
Order Plans @ www.ldilme.com



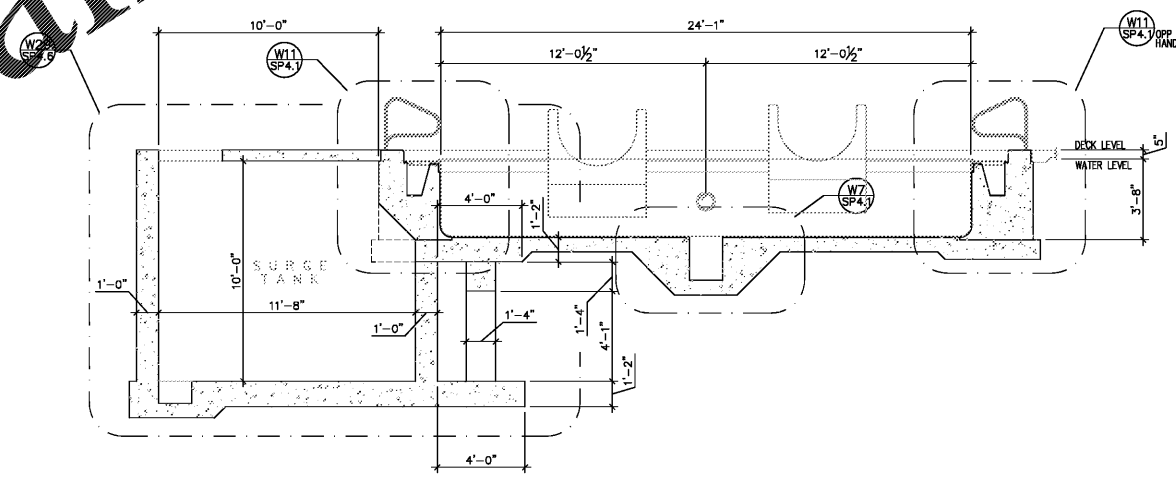
LAZY RIVER POOL SECTION - LR1
SCALE: 1/4" = 1'-0"



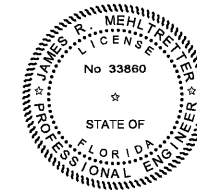
LAZY RIVER POOL SECTION - LR2
SCALE: 1/4" = 1'-0"



LAZY RIVER POOL SECTION - LR3
SCALE: 1/4" = 1'-0"



LAZY RIVER POOL SECTION - LR4
SCALE: 1/4" = 1'-0"



Digitally signed by JAMES R MEHLRETTER
DN:
OID.0.9.2342.19200300.100.1.1=A
01098000000158F46F62F600000
C=US, CN=JAMES R
MEHLRETTER, O=IdenTrust
ACES Unaffiliated Individual, C=US
Date: 2017.12.15 12:53:09 -05'00'

MASTER CONSULTING ENGINEERS, INC.
STRUCTURAL CONSULTANTS
5523 WEST CYPRESS ST., #200
TAMPA, FLORIDA 33607
813.287.3600 FAX 813.287.3822
www.mceengineers.com

Scale:	AS SHOWN
Designed by:	SL
Drawn by:	JW
Checked by:	JRM
Date:	DECEMBER 2017
Project No.:	48285014

SHEET
SP.2.2

BUTLER PARK
AQUATIC CENTER
CITY OF NORTHPORT, FL

LAZY RIVER AND
ZERO ENTRY POOL
SECTIONS



Kimley-Horn
2201 West Royal Lane, Suite 275, Irving, Texas 75063
P.O. Box 11000, Dallas, Texas 75211-0100
FLORIDA REGISTERED ENGINEERING FIRM #894
FLORIDA REGISTERED LANDSCAPE ARCHITECTURE FIRM LC-C000219
© 2017 KIMLEY-HORN AND ASSOCIATES, INC.