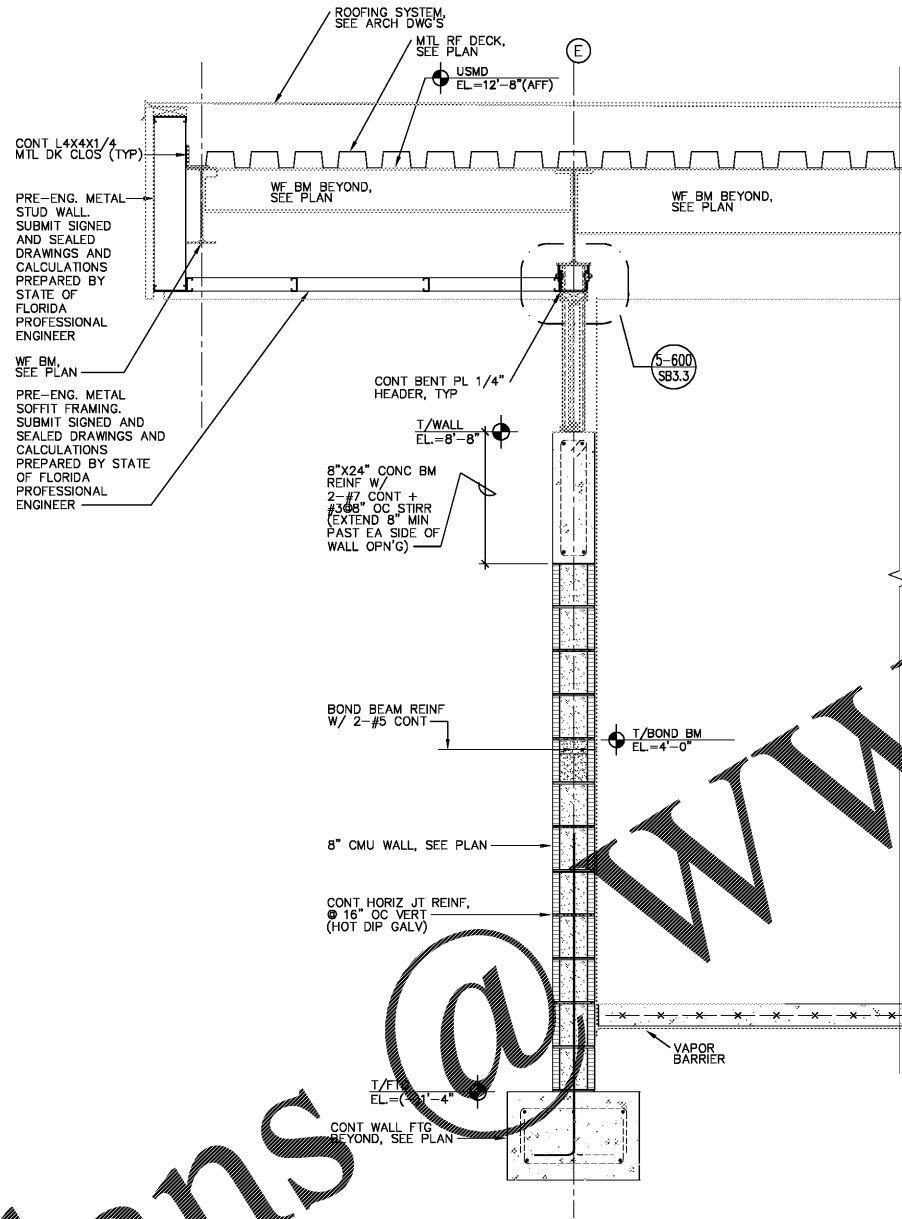
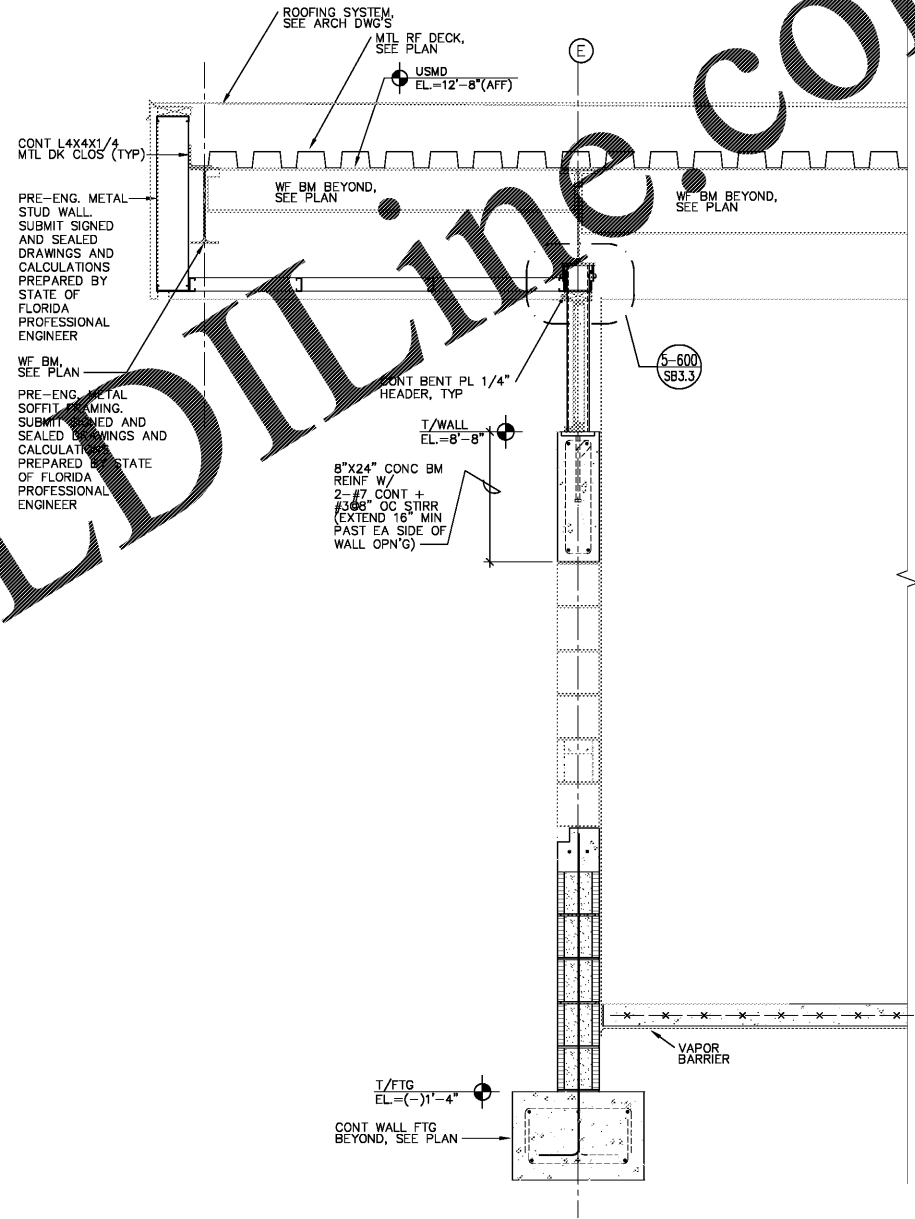


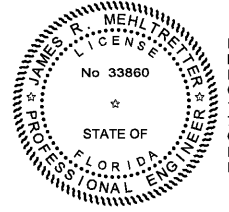
Order Plans @



SECTION W21
SCALE: 3/4" = 1'-0"



SECTION W20
SCALE: 3/4" = 1'-0"



Digitally signed by JAMES R MEHLRETTER
DN:
OID.0.9.2342.19200300.100.1.1=A0
1098000000158F46F62F600000CB
7,CN=JAMES R MEHLRETTER,
O=IdenTrust ACES Unaffiliated
Individual, C=US
Date: 2017.12.15 12:48:17-05'00'

MASTER CONSULTING ENGINEERS, INC.
STRUCTURAL CONSULTANTS
5523 WEST CYPRESS ST., #200
TAMPA, FLORIDA 33607
813.287.3600 FAX 813.287.3622
www.mceengineers.com
THIS DRAWING AND ALL INFORMATION CONTAINED THEREIN IS THE SOLE PROPERTY OF MASTER CONSULTING ENGINEERS, INC. AND IS NOT TO BE REPRODUCED, COPIED, OR TRANSMITTED IN ANY MANNER WITHOUT THE EXPRESS WRITTEN PERMISSION OF MASTER CONSULTING ENGINEERS, INC.
CA: 8426 PROJ NO. 3104-056
© COPYRIGHT 2017

Scale: AS SHOWN
Designed by: SL
Drawn by: JWM
Checked by: JRM
Date: DECEMBER 2017
Project No. 48285014

SHEET
SB5.8

BUTLER PARK
AQUATIC CENTER
CITY OF NORTHPORT, FL

BATHHOUSE
BUILDING SECTIONS



Kimley-Horn
2201 West Royal Lane, Suite 275, Irving, Texas 75063
PHONE: 214-420-5600 FAX: 214-420-5680
FLORIDA REGISTERED ENGINEERING FIRM 696
FLORIDA REGISTERED LANDSCAPE ARCHITECTURE FIRM LC-0000219
© 2017 KIMLEY-HORN AND ASSOCIATES, INC.