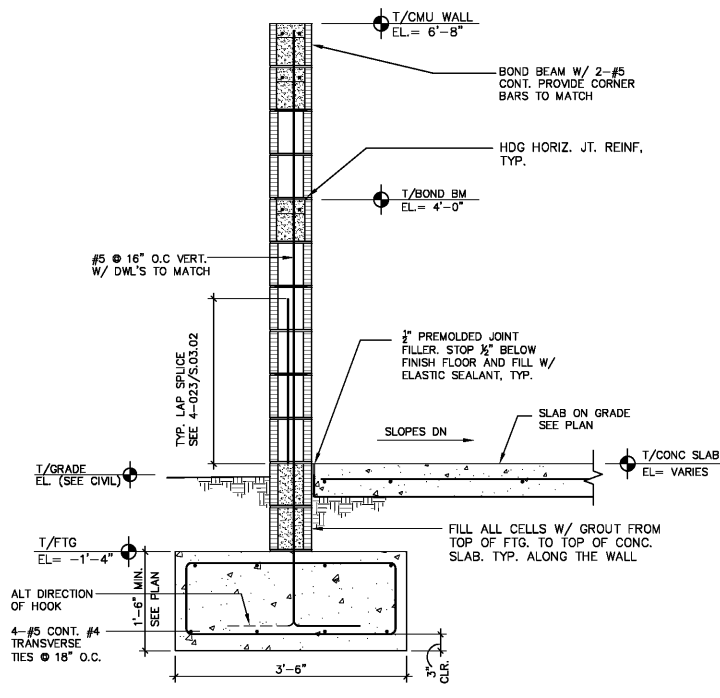
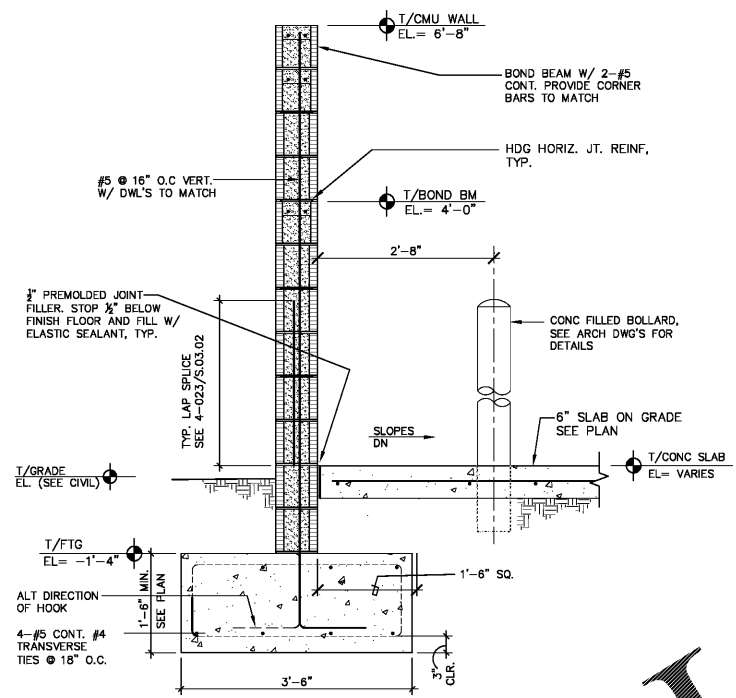


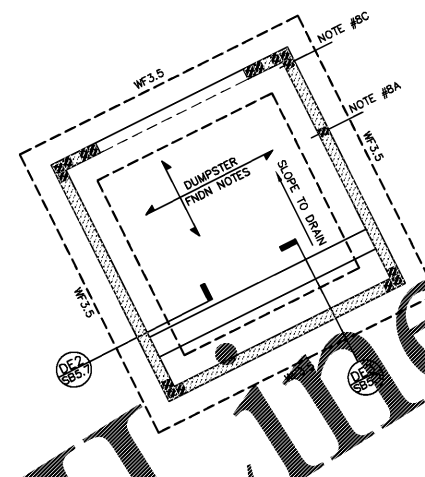
Order Plans @



DUMPSTER WALL SECTION - DE2
SCALE: 3/4" = 1'-0"

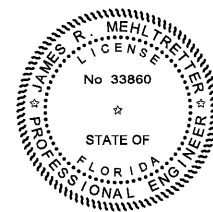


DUMPSTER WALL SECTION - DE3
SCALE: 3/4" = 1'-0"



DUMPSTER ENCLOSURE FOUNDATION PLAN - DE1
SCALE: 3/4" = 1'-0"

- DUMPSTER FOUNDATION PLAN NOTES:
1. SLAB ON GRADE TO BE 6" THICK CONCRETE OVER ON COMPACTED SUB-BASE. REFER TO GEOTECHNICAL REPORT REINFORCED WITH #4 @ 12" CENTERS IN SLAB. SUPPORT REINFORCING WITH 3" SLAB DUMPSTER OR APPROVED EQUAL @ 3'-0" (±) O.C. BOTH WAYS. FOR TYPICAL FOUNDATION PLAN DETAILS, SEE DRAWINGS SB3.1 & SB3.2.
 2. FOR GENERAL STRUCTURAL NOTES, SEE DRAWING SB1.1.
 3. FOR FOOTING SIZE AND REINFORCING, SEE SCHEDULE ON DRAWING SB1.2.
 4. () DENOTES TOP OF FOOTING ELEVATION.
 5. TOP OF FOOTING: (-)1'-0" MINIMUM.
 6. FOR PLAN DIMENSIONS NOT SHOWN, REFER TO ARCHITECTURAL DRAWINGS.
 7. TYPICAL WALL REINFORCING SCHEDULE:
 - 8A. 8" CMU DUMPSTER WALL REINFORCE WITH 1-#5 @ 16" OC VERTICAL.
 - 8B. ■ INDICATES ADDITIONAL 1-#5 VERTICAL.
 - 8C. PROVIDE ADDITIONAL 1-#5 VERTICAL IN FIRST (2) CELLS EACH SIDE OF ALL WALL OPENINGS AND CORNERS.
 8. COORDINATE LOCATION OF (CJ) CONTROL JOINTS (SAWCUTS & TOOLED JOINTS) AT WALKWAY SLABS WITH ARCHITECTURAL DRAWINGS. CONTROL JOINTS AT EXPOSED TO WEATHER WALKWAYS SHALL BE TOOLED JOINTS SEE TYPICAL DETAIL 3-201 ON SB3.1.
 9. ALL CMU WALLS SHALL BE REINFORCED AS SHOWN ON PLAN WITH DOWELS TO MATCH, U.N.O. ALL CELLS AT REINFORCING LOCATION SHALL BE FILLED WITH GROUT. PROVIDE INSPECTION/CLEANOUT HOLE AT BASE WHEN POUR HEIGHT IS GREATER THAN 4'-0".



Digitally signed by JAMES R MEHLRETTER
DN:
OID.0.9.2342.19200300.100.1.1-A01
098000000158F46F62F600000CB7,
CN=JAMES R MEHLRETTER,
O=IdenTrust ACES Unaffiliated
Individual, C=US
Date: 2017.12.15 12:47:39-05'00'

MASTER CONSULTING ENGINEERS, INC.
STRUCTURAL CONSULTANTS
5523 WEST CYPRESS ST., #200
TAMPA, FLORIDA 33607
813.287.3600 FAX: 813.287.3622
www.mceengineers.com
THIS DRAWING AND ALL INFORMATION CONTAINED HEREIN IS THE SOLE PROPERTY OF MASTER CONSULTING ENGINEERS, INC. AND IS NOT TO BE REPRODUCED, COPIED, OR DISCLOSED IN ANY MANNER WITHOUT THE EXPRESS WRITTEN PERMISSION OF MASTER CONSULTING ENGINEERS, INC.
CA: 8426 PROJ. NO. 3104-056
© COPYRIGHT 2017

Scale: AS SHOWN
Designed by: SL
Drawn by: JW
Checked by: JRM
Date: DECEMBER 2017
Project No. 48285014

SHEET
SB5.7

BUTLER PARK
AQUATIC CENTER
CITY OF NORTHPORT, FL



Kimley-Horn
2201 West Royal Lane, Suite 275, Irving, Texas 75063
PH: 972.261.4200
FLORIDA REGISTERED PROFESSIONAL ENGINEERS
FLORIDA REGISTERED LANDSCAPE ARCHITECTURE FIRM LC-0000219
© 2017 KIMLEY-HORN AND ASSOCIATES, INC.