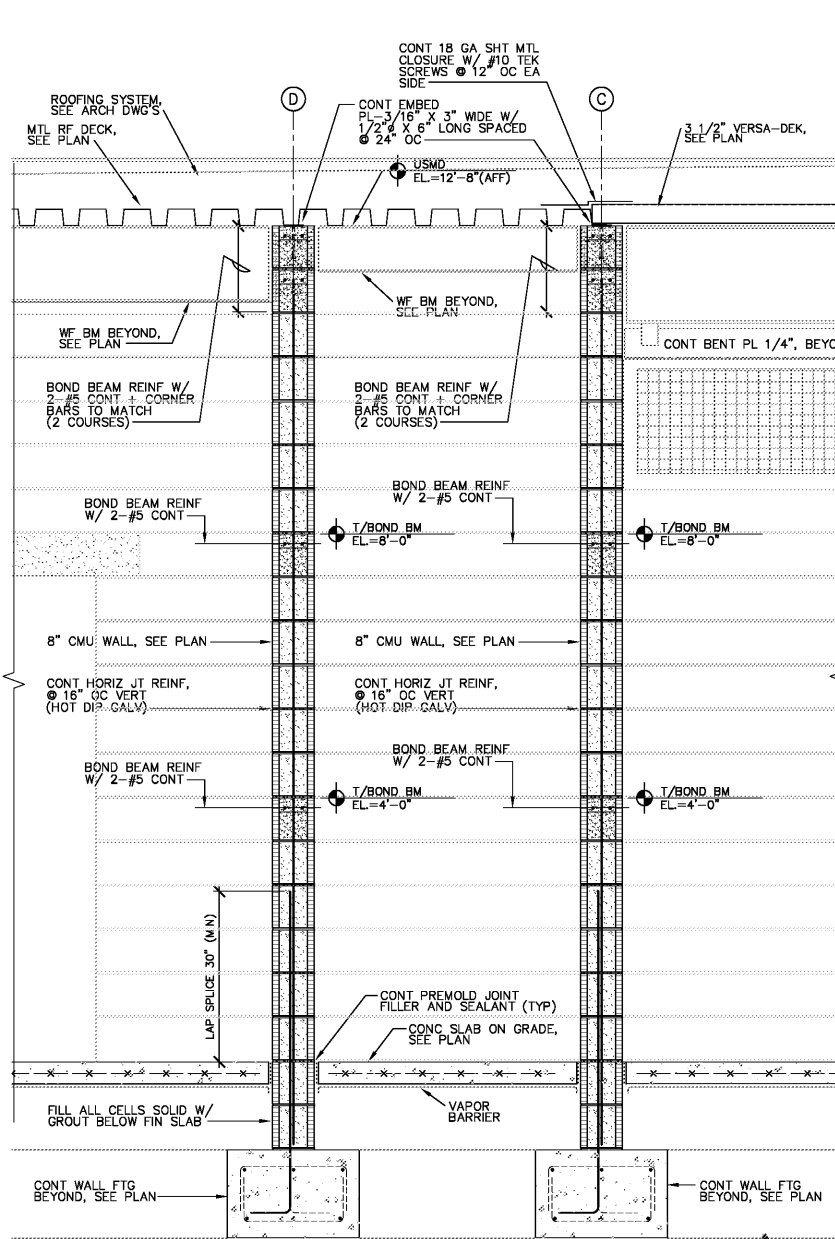
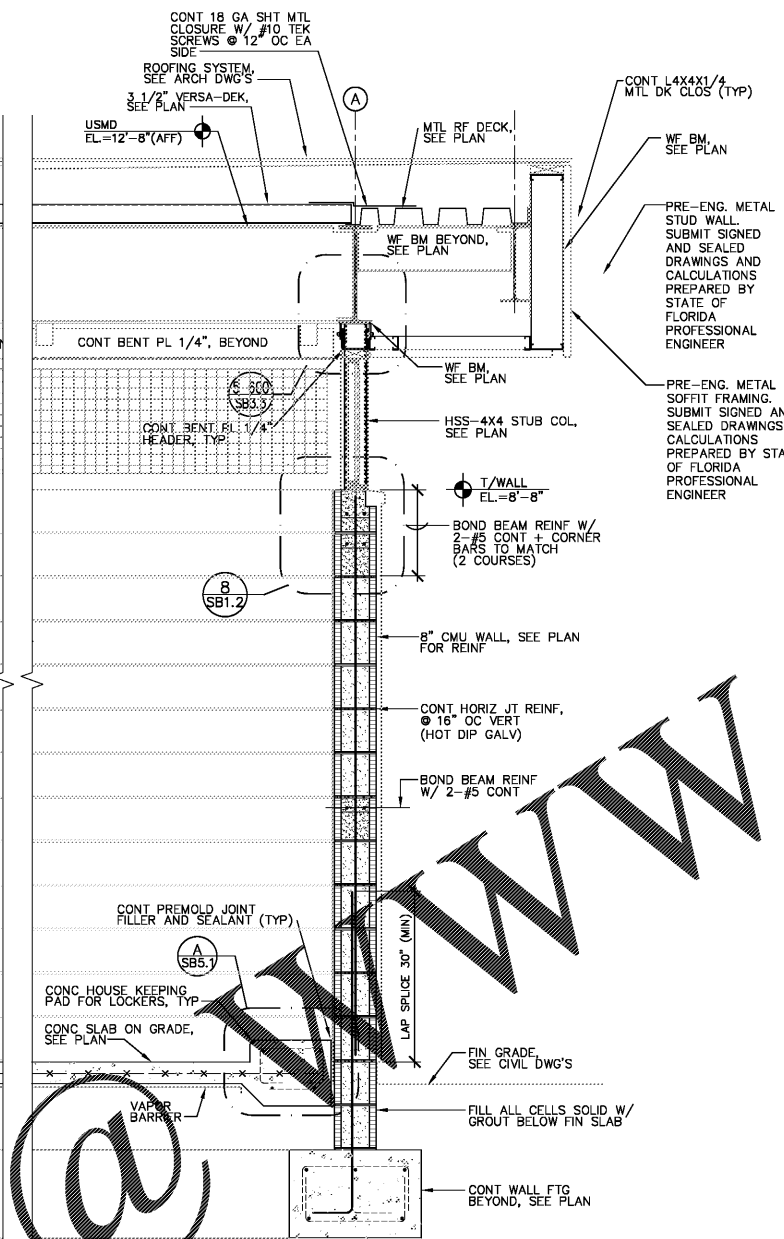


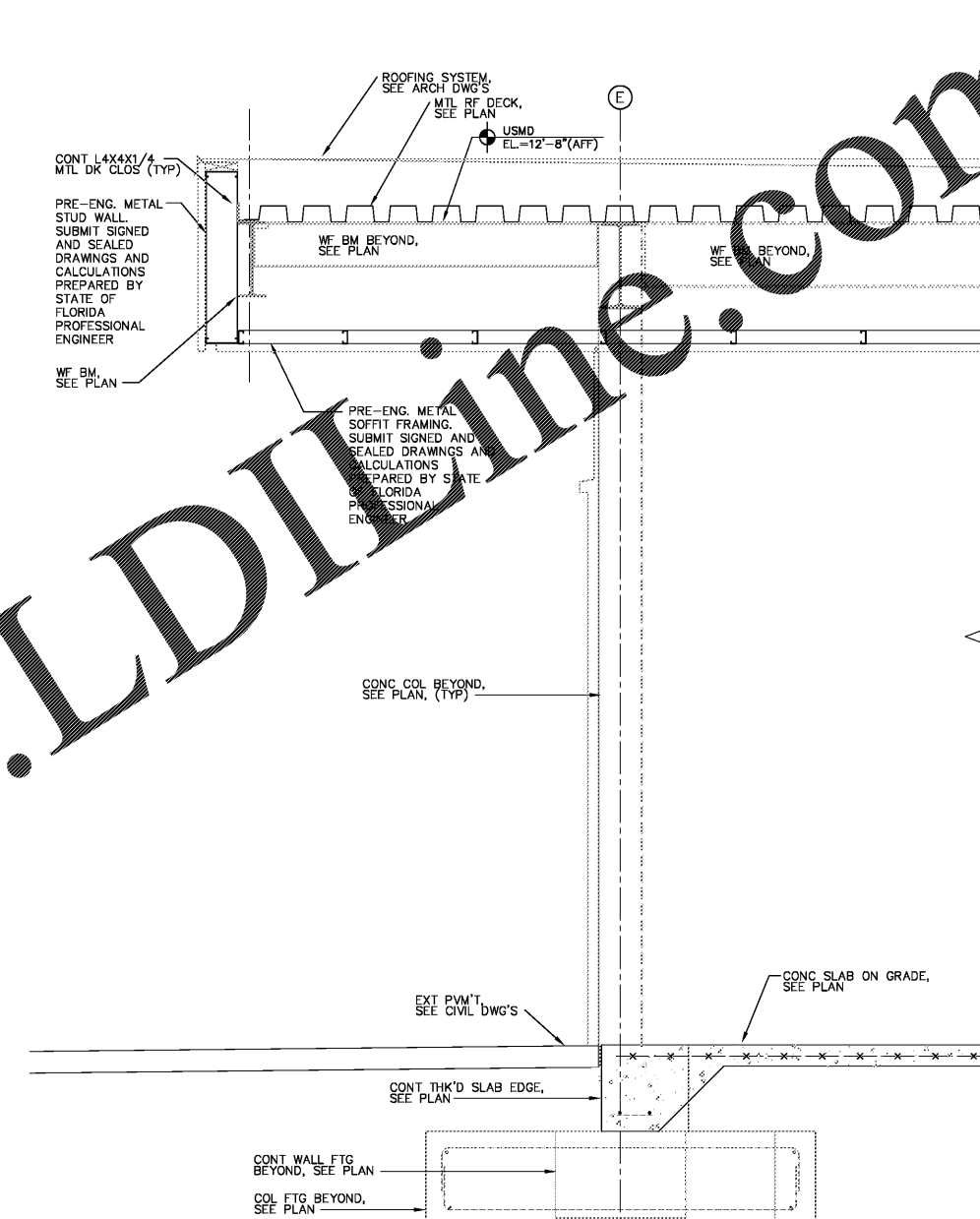
# Order Plans



SECTION W9  
SCALE: 3/4" = 1'-0"



SECTION W10  
SCALE: 3/4" = 1'-0"



SECTION W11  
SCALE: 3/4" = 1'-0"

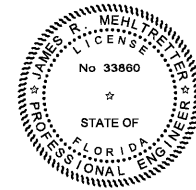
Scale: AS SHOWN  
Designed by: SL  
Drawn by: JW  
Checked by: JRM  
Date: DECEMBER 2017  
Project No. 48285014

BATHHOUSE  
BUILDING SECTIONS

BUTLER PARK  
AQUATIC CENTER  
CITY OF NORTHPORT, FL



**Kimley-Horn**  
2201 West Royal Lane, Suite 275, Irving, Texas 75063  
PH: 972.420.0000 FAX: 972.420.0000  
FLORIDA REGISTERED PROFESSIONAL ENGINEERING FIRM  
FLORIDA REGISTERED LANDSCAPE ARCHITECTURE FIRM LC-C000219  
© 2017 KIMLEY-HORN AND ASSOCIATES, INC.



Digitally signed by JAMES R MEHLRETTER  
DN:  
OID.0.9.2342.19200300.100.1.1-A  
01098000000158F46F62F600000  
CB7,CN=JAMES R  
MEHLRETTER, O=IdenTrust  
ACES Unaffiliated Individual,  
C=US  
Date: 2017.12.15 12:45:45-05'00'

**MASTER CONSULTING ENGINEERS, INC.**  
STRUCTURAL CONSULTANTS  
5523 WEST CYPRESS ST., #200  
TAMPA, FLORIDA 33607  
813.287.3600 FAX: 813.287.3622  
www.mceengineers.com  
THIS DRAWING AND ALL INFORMATION CONTAINED HEREIN IS THE SOLE PROPERTY OF MASTER CONSULTING ENGINEERS, INC. AND IS NOT TO BE REPRODUCED, COPIED, OR TRANSMITTED IN ANY FORM OR BY ANY MEANS, ELECTRONIC OR MECHANICAL, INCLUDING PHOTOCOPYING, RECORDING, OR BY ANY INFORMATION STORAGE AND RETRIEVAL SYSTEM.  
CA: 8426 PROJ NO. 3104-056  
© COPYRIGHT 2017

SHEET  
SB5.4