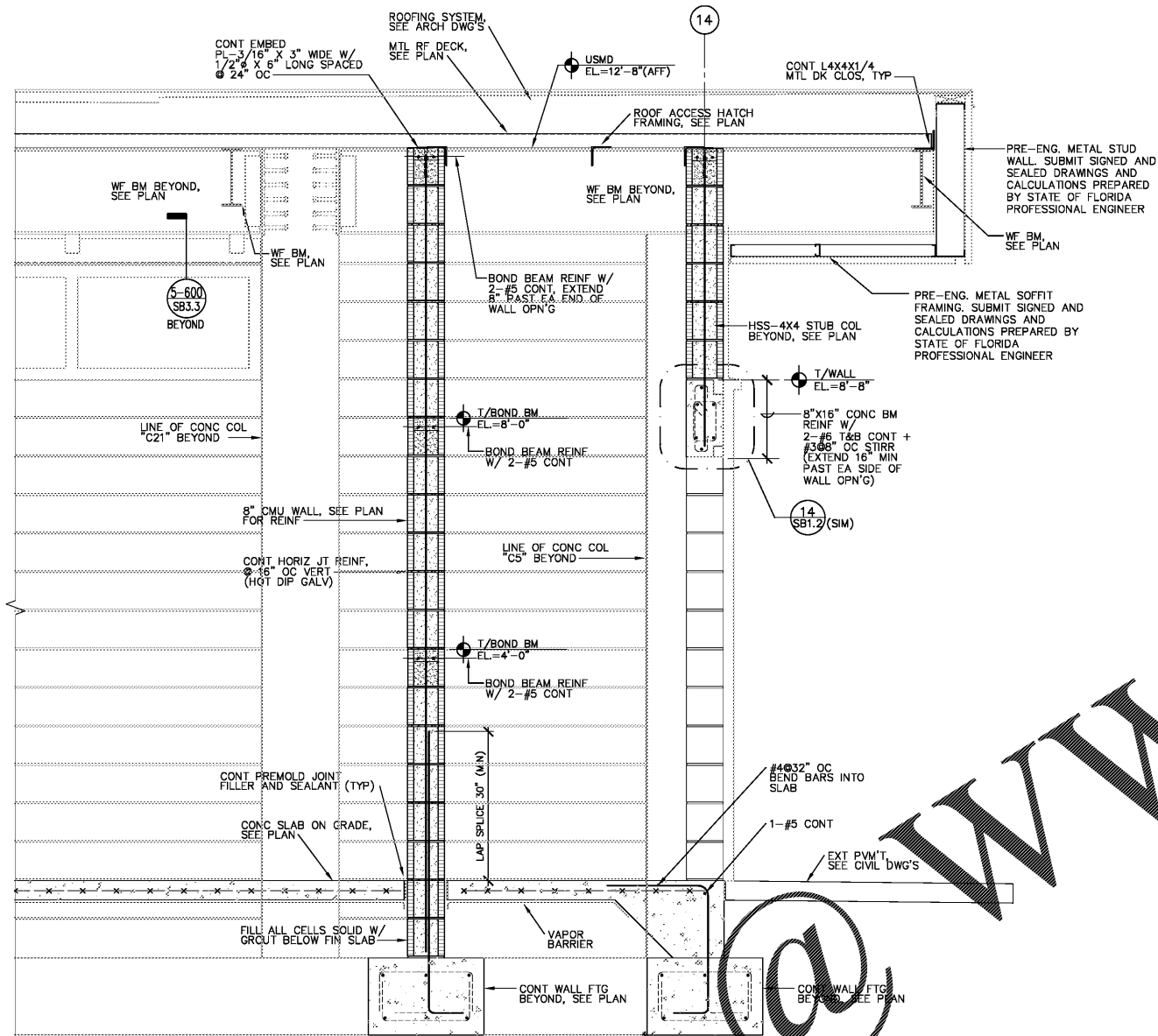
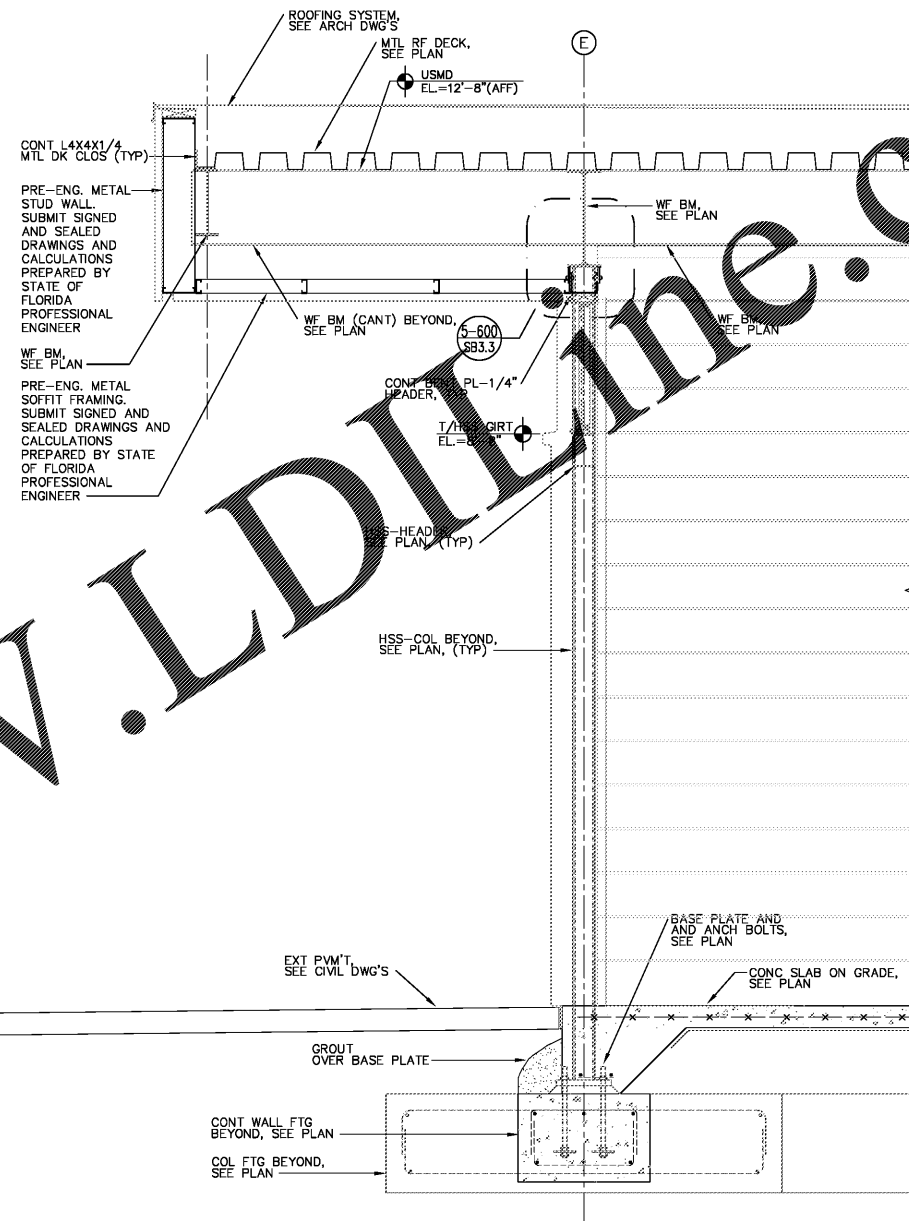


Order Plans



SECTION W7
SCALE: 1/4" = 1'-0"



SECTION W8
SCALE: 3/4" = 1'-0"

Kimley-Horn
2201 West Royal Lane, Suite 275, Irving, Texas 75063
PH: 972.421.4200
FLORIDA REGISTERED ENGINEERING FIRM REG. NO. 33886
FLORIDA REGISTERED LANDSCAPE ARCHITECTURE FIRM LC-0000219
© 2017 KIMLEY-HORN AND ASSOCIATES, INC.

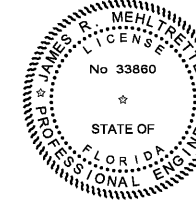


BUTLER PARK
AQUATIC CENTER
CITY OF NORTHPORT, FL

BATHHOUSE
BUILDING SECTIONS

Scale:	AS SHOWN
Designed by:	SL
Drawn by:	JW
Checked by:	JRM
Date:	DECEMBER 2017
Project No.:	48285014

SHEET
SB5.3



Digitally signed by JAMES R MEHLRETTER
DN:
OID.0.9.2342.19200300.100.1.1=A0
109800000158F46F62F600000C0B
7.CN=JAMES R MEHLRETTER,
O=IdentTrust ACES Unaffiliated
Individual, C=US
Date: 2017.12.15 12:44:47-05'00'

MASTER CONSULTING ENGINEERS, INC.
STRUCTURAL CONSULTANTS
5523 WEST CYPRESS ST., #200
TAMPA, FLORIDA 33607
813.287.3600 FAX: 813.287.3622
www.mceengineers.com
THIS DRAWING AND ALL INFORMATION CONTAINED HEREIN IS THE SOLE PROPERTY OF MASTER CONSULTING ENGINEERS, INC. AND IS NOT TO BE REPRODUCED, COPIED, OR TRANSMITTED IN ANY FORM OR BY ANY MEANS, ELECTRONIC OR MECHANICAL, INCLUDING PHOTOCOPYING, RECORDING, OR BY ANY INFORMATION STORAGE AND RETRIEVAL SYSTEM.
© 2017 MASTER CONSULTING ENGINEERS, INC. PROJ. NO. 3104-056 COPYRIGHT 2017