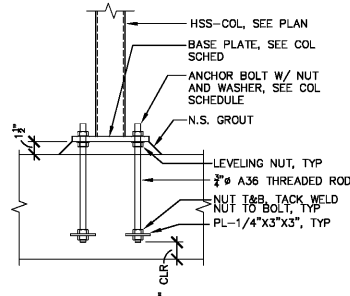


STEEL COLUMN SCHEDULE

| LEVEL | COLUMN No. | S1 | S2 | S3 | S4 | S5 | S6 | S7 | S8 | S9 | S10 | S11 | S12 | S13 | S14 | S15 | S16 | S17 | S18 | S19 | LEVEL | COLUMN No. | |
|--|------------|----|----|----|----|----|----|----|----|----|-----|-----|-----|-----|-----|-----|-----|-----|-----|-----|------------|--|--|
| MAIN ROOF | | | | | | | | | | | | | | | | | | | | | | MAIN ROOF | |
| B/MTL RF DECK (12'-8") | | | | | | | | | | | | | | | | | | | | | | B/MTL RF DECK (12'-8") | |
| TOP OF LOW WALL (8'-8") | | | | | | | | | | | | | | | | | | | | | | TOP OF LOW WALL (8'-8") | |
| TOP OF BEARING PLATE (SEE WALL SECTIONS) | | | | | | | | | | | | | | | | | | | | | | TOP OF BEARING PLATE (SEE WALL SECTIONS) | |
| FIRST FLOOR (0'-0") | | | | | | | | | | | | | | | | | | | | | | FIRST FLOOR (0'-0") | |
| COLUMN BASE PLATE | | | | | | | | | | | | | | | | | | | | | | COLUMN BASE PLATE | |
| COLUMN No. | | S1 | S2 | S3 | S4 | S5 | S6 | S7 | S8 | S9 | S10 | S11 | S12 | S13 | S14 | S15 | S16 | S17 | S18 | S19 | COLUMN No. | | |

COLUMN SCHEDULE NOTES:

- TOP HEAVY LINE IN COLUMN SCHEDULE INDICATES REFERENCE TOP OF COLUMN FOR ACTUAL ELEVATION. SEE PLANS AND SECTIONS.
- BOTTOM HEAVY LINE IN COLUMN SCHEDULE INDICATES REFERENCE BOTTOM OF COLUMN.
- SEE SB1.2 FOR BASE PLATE DETAILS.



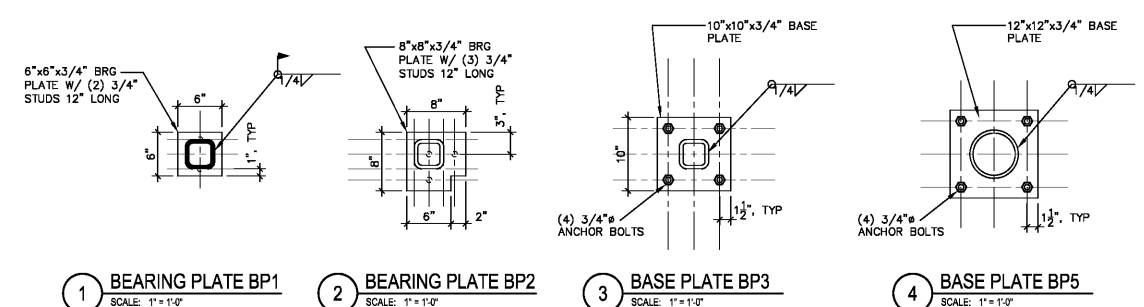
5A COL CAP DETAIL
SCALE: 1"=1'-0"

(2000 PSF) SOIL - WALL FOOTING SCHEDULE

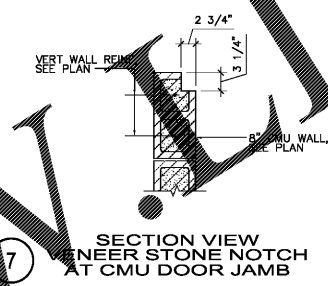
| MARK | SIZE | THICKNESS | TOP & BOT. REINF. CONT. | TOP & BOT. REINF. TRANSV. | REMARKS |
|-------|---------------|-----------|-------------------------|---------------------------|------------------------|
| WF2.0 | 2'-0" X CONT. | 1'-4" | 3-#5 | #4 @ 24" | STD. ACI HK |
| WF2.5 | 2'-6" X CONT. | 1'-4" | 3-#5 | #4 @ 24" | STD. ACI HK |
| WF3.0 | 3'-0" X CONT. | 1'-4" | 4-#5 | #4 @ 16" | STD. ACI HK |
| WF3.5 | 3'-6" X CONT. | 1'-4" | 4-#5 | #4 @ 16" | STD. ACI HK |
| TS-1 | 1'-0" X CONT. | 1'-4" | 2-#5 | #4 @ 18" | REINFORCED BOTTOM ONLY |

(2000 PSF) SOIL - FOOTING SCHEDULE

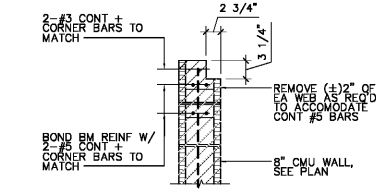
| MARK | SIZE | THICKNESS | TOP & BOT. REINF. EA. WAY | REMARKS |
|------|---------------|-----------|---------------------------|-------------|
| F3.0 | 3'-0" X 3'-0" | 1'-6" | 6-#5 | STD. ACI HK |
| F4.0 | 4'-0" X 4'-0" | 1'-6" | 5-#5 | STD. ACI HK |
| F5.0 | 5'-0" X 5'-0" | 1'-6" | 6-#5 | STD. ACI HK |
| F6.0 | 6'-0" X 6'-0" | 1'-6" | 5-#5 | STD. ACI HK |



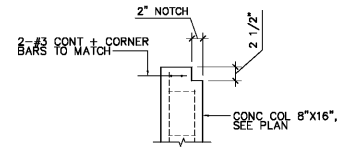
1 BEARING PLATE BP1 SCALE: 1"=1'-0"
 2 BEARING PLATE BP2 SCALE: 1"=1'-0"
 3 BASE PLATE BP3 SCALE: 1"=1'-0"
 4 BASE PLATE BP5 SCALE: 1"=1'-0"
 5 COL CAP DETAIL SCALE: 1"=1'-0"



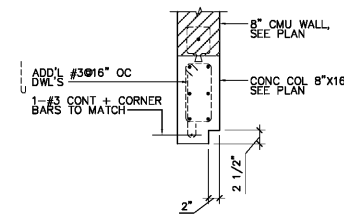
7 SECTION VIEW VENEER STONE NOTCH AT CMU DOOR JAMB



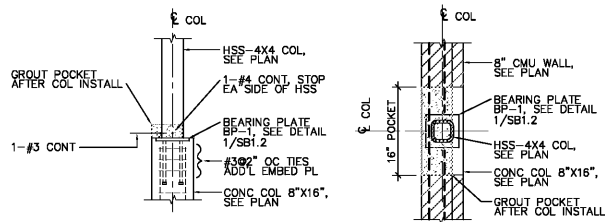
8 SECTION VIEW VENEER STONE NOTCH AT TOP OF CMU WALL



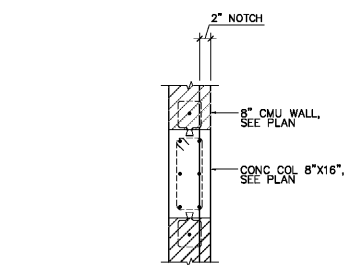
11 SECTION VENEER STONE NOTCH AT TOP OF CONC COL



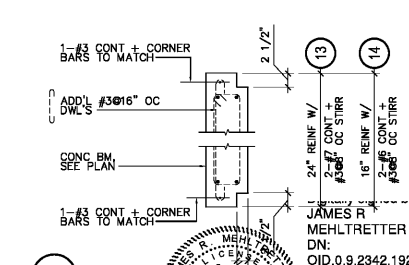
9 PLAN VIEW VENEER STONE NOTCH AT CONC BM AND COL AROUND WALL OPENING



12 POCKET DETAILS COLUMN BASE PLATE POCKET



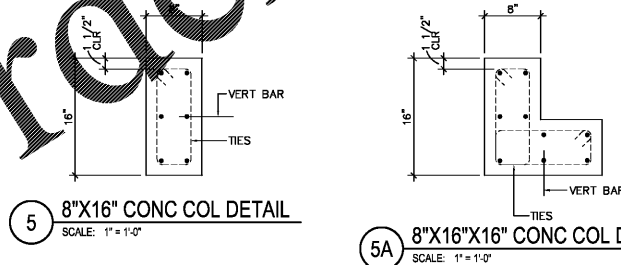
10 PLAN VIEW VENEER STONE NOTCH AT TOP OF CMU WALL AND CONC COL



13 SECTION VENEER STONE NOTCH AT TOP OF CONC COL OVER WALL

CONCRETE COLUMN SCHEDULE

| LEVEL | COLUMN No. | C1 | C2 | C3 | C4 | C5 | C6 | C7 | C8 | C9 | C10 | C11 | C12 | C13 | C14 | C15 | C16 | C17 | C18 | C19 | C20 | C21 | LEVEL | COLUMN No. |
|-------------------------|------------|----|----|----|----|----|----|----|----|----|-----|-----|-----|-----|-----|-----|-----|-----|-----|-----|-----|-----|-------------------------|------------|
| MAIN ROOF | | | | | | | | | | | | | | | | | | | | | | | MAIN ROOF | |
| B/MTL RF DECK (12'-8") | | | | | | | | | | | | | | | | | | | | | | | B/MTL RF DECK (12'-8") | |
| TOP OF LOW WALL (8'-8") | | | | | | | | | | | | | | | | | | | | | | | TOP OF LOW WALL (8'-8") | |
| FIRST FLOOR (0'-0") | | | | | | | | | | | | | | | | | | | | | | | FIRST FLOOR (0'-0") | |
| TOP OF FOOTING (-1'-4") | | | | | | | | | | | | | | | | | | | | | | | TOP OF FOOTING (-1'-4") | |
| COLUMN No. | | C1 | C2 | C3 | C4 | C5 | C6 | C7 | C8 | C9 | C10 | C11 | C12 | C13 | C14 | C15 | C16 | C17 | C18 | C19 | C20 | C21 | COLUMN No. | |



5 8"X16" CONC COL DETAIL SCALE: 1"=1'-0"
 5A 8"X16"X16" CONC COL DETAIL SCALE: 1"=1'-0"

COLUMN SCHEDULE NOTES:

- TOP HEAVY LINE IN COLUMN SCHEDULE INDICATES REFERENCE TOP OF COLUMN FOR ACTUAL ELEVATION. SEE PLANS AND SECTIONS.
- BOTTOM HEAVY LINE IN COLUMN SCHEDULE INDICATES REFERENCE BOTTOM OF COLUMN.
- PROVIDE 3 ADD'L TIES AT 3' OC AT TOP OF COLUMN.

Kimley-Horn
 2201 West Royal Lane, Suite 275, Irving, Texas 75063
 (972) 251-1000
 FLORIDA REGISTERED ENGINEERING FIRM #690
 FLORIDA REGISTERED LANDSCAPE ARCHITECTURE FIRM LC-0000219
 © 2017 KIMLEY-HORN AND ASSOCIATES, INC.



BUTLER PARK AQUATIC CENTER
 CITY OF NORTHPORT, FL

SCHEDULES AND NOTES

Scale: AS SHOWN
 Designed by: JW
 Drawn by: SW
 Checked by: JRM
 Date: DECEMBER 2017
 Project No. 48285014

SHEET
SB1.2

MASTER CONSULTING ENGINEERS, INC.
 STRUCTURAL CONSULTANTS
 5523 WEST CYPRESS ST., #200
 TAMPA, FLORIDA 33607
 813.287.3600 FAX 813.287.3822
 www.mceengineers.com
 THIS DRAWING AND ALL INFORMATION CONTAINED HEREIN IS THE SOLE PROPERTY OF MASTER CONSULTING ENGINEERS, INC. AND IS NOT TO BE REPRODUCED, COPIED, OR TRANSMITTED IN ANY FORM OR BY ANY MEANS, ELECTRONIC OR MECHANICAL, INCLUDING PHOTOCOPYING, RECORDING, OR BY ANY INFORMATION STORAGE AND RETRIEVAL SYSTEM.
 CA: 8426 PROJ NO. 3104-056
 © COPYRIGHT 2017

Order Plans @