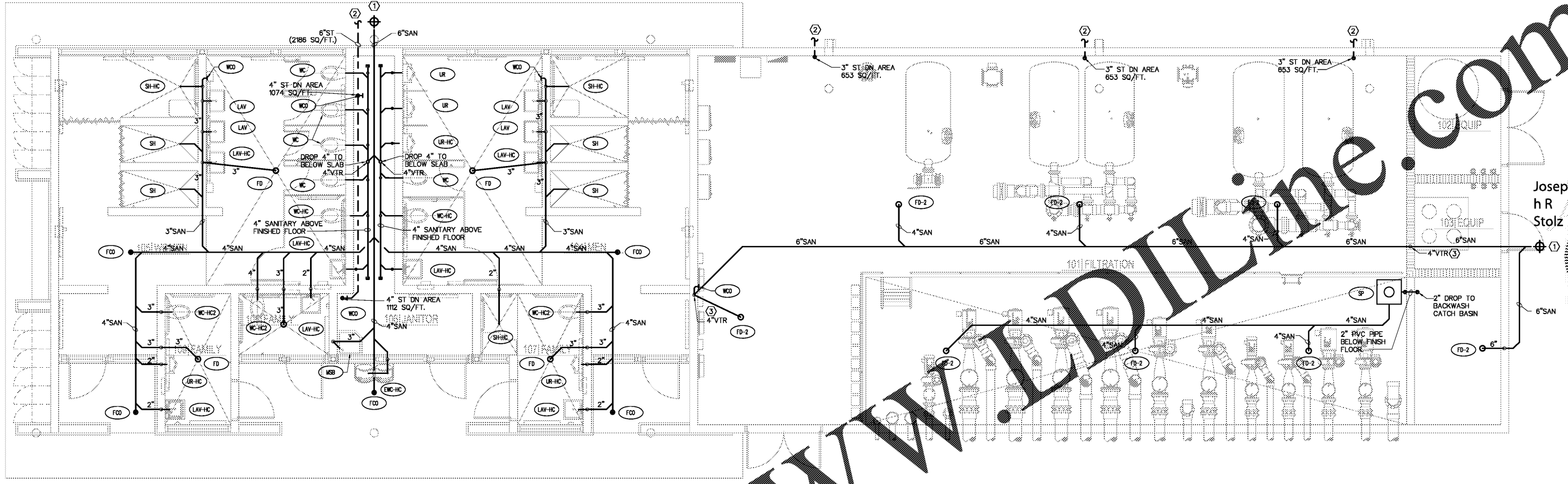


Order Plans @



FILTRATION SANITARY PLAN
SCALE: 1/4" = 1'-0"

- PLUMBING KEYED NOTES:
1. EXTEND AND CONNECT NEW SANITARY PIPING TO EXISTING SANITARY SEWER SYSTEM. FIELD VERIFY EXACT SIZE, LOCATION, INVERT ELEVATION AND DIRECTION OF FLOW PRIOR TO COMMENCEMENT OF WORK.
 2. EXTEND AND CONNECT NEW STORM PIPING TO EXISTING STORM SEWER SYSTEM. FIELD VERIFY EXACT SIZE, LOCATION, INVERT ELEVATION AND DIRECTION OF FLOW PRIOR TO COMMENCEMENT OF WORK.
 3. VENT UP THRU ROOF. FIELD COORDINATE EXACT SIZE AND LOCATION PRIOR TO COMMENCEMENT OF WORK.

This item has been electronically signed and sealed by Joseph R. Stolz, P.E. On 12/15/2017 using a Digital Signature. Printed copies of this document are not considered signed and sealed and the signature must be verified on any electronic copies.

Job Number: 84080

Colwill Engineering
Consulting Engineers, Inc.
Engineering Business No. 9021
4760 East Adamo Drive Tampa, Florida 33606
Tel: 813-241-2020 Fax: 813-241-2424
© 2017 ALL RIGHTS RESERVED

Scale:	AS SHOWN
Designed by:	LR
Drawn by:	LR
Checked by:	JS
Date:	DECEMBER 2017
Project No.:	48285014

SHEET
PF-2.0

FILTRATION BUILDING
SANITARY PLAN

BUTLER PARK
AQUATIC CENTER
CITY OF NORTHPORT, FL

Joseph R. Stolz
P.E. No. 58186

Kimley-Horn
2201 West Royal Lane, Suite 275, Irving, Texas 75063
PH: 972-261-4100
FLORIDA REGISTERED ENGINEERING FIRM #991
© 2017 KIMLEY-HORN AND ASSOCIATES, INC.