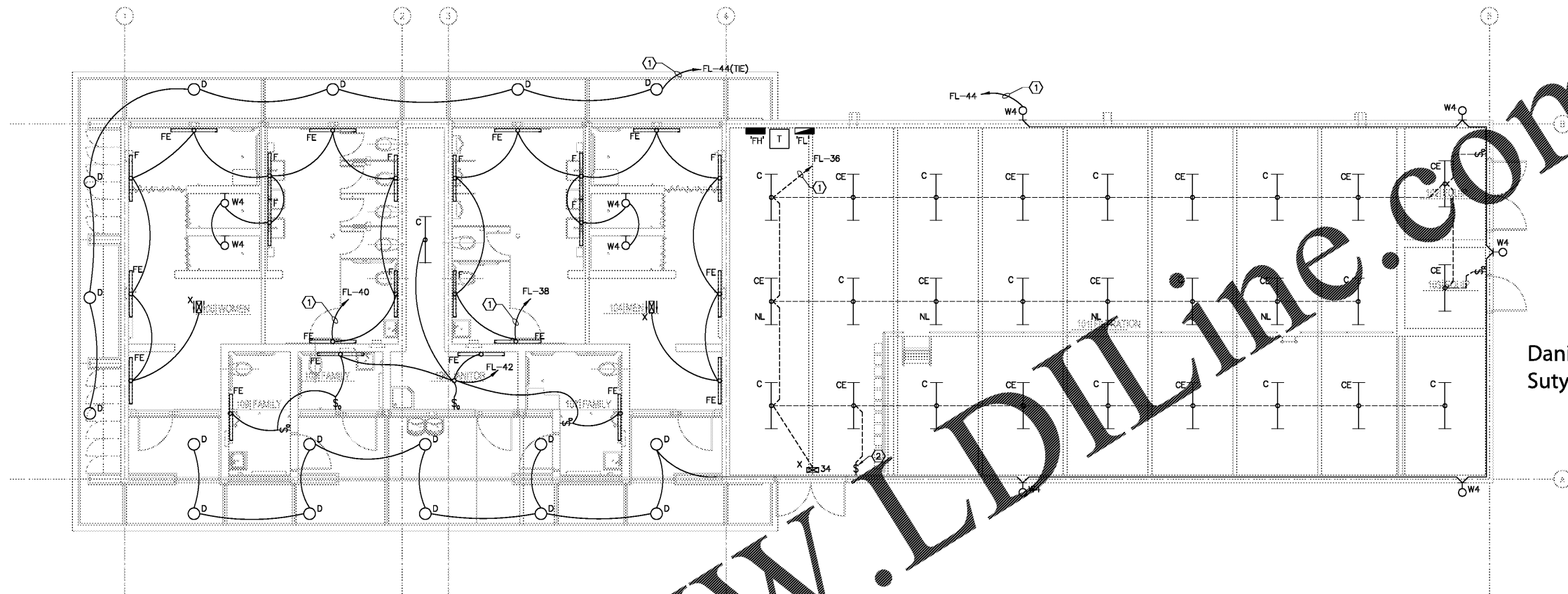


Order Plans @ www.LDILine.com



LIGHTING PLAN
SCALE: 3/16"=1'-0"

- NOTES
- ROUTE HOMERUN THROUGH LIGHTING CONTACTOR. REFER TO LIGHTING CONTACTOR SCHEDULE AND CONTROL DIAGRAM ON SHEET EB-4.0.
 - PROVIDE DIGITAL TIMER SWITCH (WATTSTOPPER TS-400 OR EQUIVALENT) FOR LIGHTING CONTROL THIS ROOM.
- GENERAL NOTES
- ALL CONDUITS IN FILTRATION TO BE PVC TYPE. METALLIC CONDUIT IS NOT ALLOWED.
 - WHERE MORE CONDUCTORS ARE SHOWN THAN CIRCUITS IN A CONTACTOR CONTROLLED HOMERUN, THE ADDITIONAL CONDUCTOR IS TO POWER NIGHT LIGHTS AND/OR EMERGENCY BATTERY BALLAST AND SHALL NOT BE SWITCHED.
 - EXTEND UNCONTROLLED "HOT" CONDUCTOR TO ALL EMERGENCY LIGHTS, EXIT LIGHTS, NIGHT LIGHTS, AND ROOMS CONTROLLED BY OCCUPANCY SENSOR SWITCH.

Kimley-Horn
 2201 West Royal Lane, Suite 275, Irving, Texas 75063
 PHONE: 972.261.1400
 FLORIDA REGISTERED ENGINEERING FIRM #96
 FLORIDA REGISTERED LANDSCAPE ARCHITECTURE FIRM LC-C000219
 © 2017 KIMLEY-HORN AND ASSOCIATES, INC.



Daniel A. Sutyak
 Sutyak
 Daniel Anthony Sutyak
 P.E. No. 74042

**BUTLER PARK
 AQUATIC CENTER
 CITY OF NORTHPORT, FL**

**FILTRATION BUILDING
 LIGHTING PLAN**

Scale:	AS SHOWN
Designed by:	DAS
Drawn by:	SW
Checked by:	DAS
Date:	DECEMBER 2017
Project No.:	48285014

SHEET
EF-2.0

This item has been electronically signed and sealed by Daniel A. Sutyak, PE. On 8/17/2016 using a Digital Signature.
 Printed copies of this document are not considered signed and sealed and the signature must be verified on any electronic copies.



Job Number: 84080