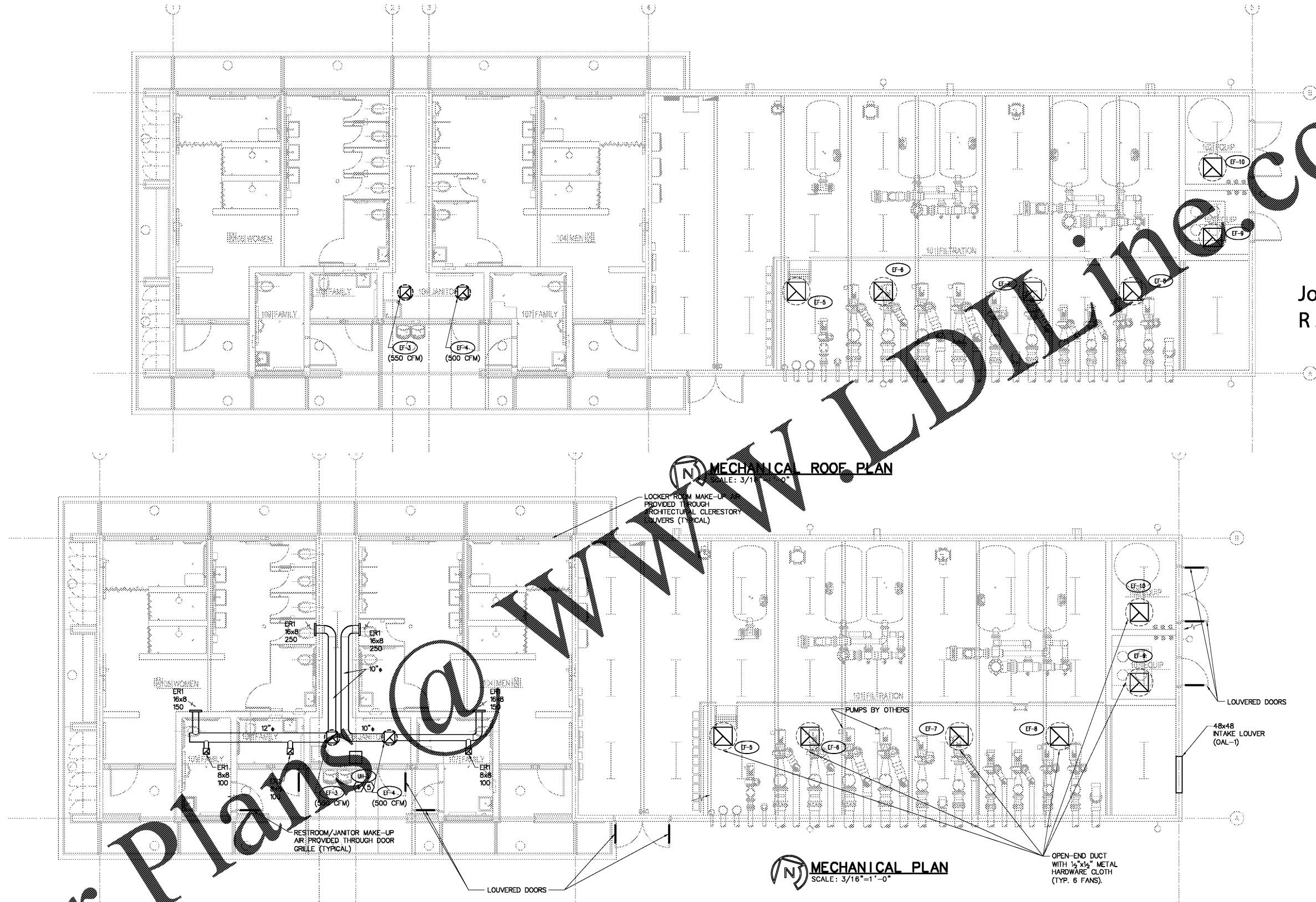


Order Plans



**MECHANICAL ROOF PLAN**  
SCALE: 3/16"=1'-0"

**MECHANICAL PLAN**  
SCALE: 3/16"=1'-0"

- NOTES:**
- REFER TO DRAWINGS MB-2.0 AND MB-3.0 FOR SCHEDULES AND DETAILS.
  - MAINTAIN 10'-0" BETWEEN OUTDOOR AIR INTAKES, EXHAUST OUTLETS AND PLUMBING VENTS.
  - NEW UNIT LOCATIONS ARE APPROXIMATED. CONTRACTOR SHALL BE RESPONSIBLE FOR LOCATION TO CONFORM TO THE STRUCTURAL SUPPORT OF THE WALL, ROOF, OR SLAB. COORDINATE LOCATION WITH OTHER CONTRACTORS.
  - CEILING MOUNTED HEATER; REFER TO MB-10 FOR SCHEDULE.
  - ELECTRICAL CONNECTION TO HEATER PER MANUFACTURER'S RECOMMENDATION.

**MECHANICAL LEGEND**

EXHAUST GRILLE		DUCT UP	
FLEXIBLE DUCT		VOLUME DAMPER	
RIGID DUCT			

This item has been electronically signed and sealed by Joseph R. Stolz, PE, On 8/17/2016 using a Digital Signature.  
Printed copies of this document are not considered signed and sealed and the signature must be verified on any electronic copies.

Job Number: 84080  
  
**Colwill Engineering**  
 Consulting Engineers, Inc.  
 Engineering Business No. 9021  
 4750 East Adamo Drive Tampa, Florida 33606  
 Tel: 813-841-2520 Fax: 813-841-8424  
 © 2017 ALL RIGHTS RESERVED

Scale: AS SHOWN

Designed by:	MP
Drawn by:	LO
Checked by:	MP/AR
Date:	DECEMBER 2017
Project No.:	48285014

SHEET  
MF-1.0

BUTLER PARK  
AQUATIC CENTER  
CITY OF NORTH PORT, FL

FILTRATION BUILDING  
MECHANICAL PLAN

Joseph R Stolz  
 Digitally signed by Joseph R. Stolz, PE, DN: cn=US, o=Colwill Engineering, ou=Colwill Engineering, email=jstolz@colwilleng.com, c=US, Date: 2017.12.19 12:29:39 -0500  
  
 Joseph R. Stolz  
 P.E. No. 58186

**Kimley-Horn**  
 2201 West Royal Lane, Suite 275, Irving, Texas 75063  
 P.O. Box 10000, Dallas, Texas 75210  
 FLORIDA REGISTERED ENGINEERING FIRM #96  
 FLORIDA REGISTERED LANDSCAPE ARCHITECTURE FIRM LC-C000219  
 © 2017 KIMLEY-HORN AND ASSOCIATES, INC.