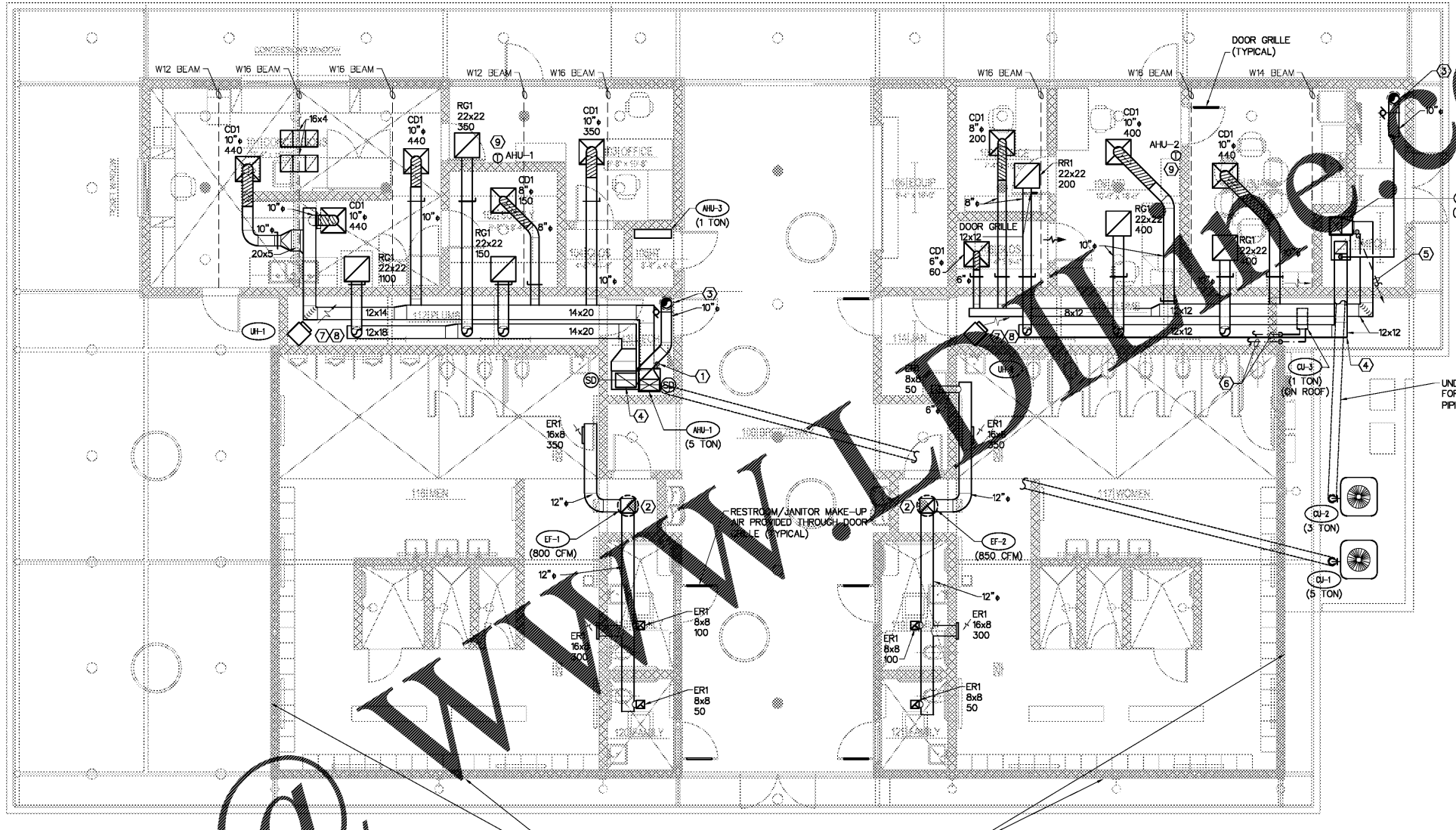


AIR HANDLER DATA		
MARK	---	AHU-3
MANUFACTURER	---	DAIKIN
MODEL	---	PKA-A12
CAPACITY	TONS	1
TOTAL COOLING	MBH	12
SUPPLY AIR	CFM	425
OUTSIDE AIR	CFM	0
ENTERING AIR TEMP	DB/WB	75/63
LEAVING AIR TEMP	DB/WB	52/53
EXTERNAL STATIC PRESSURE	IN H <sub>2</sub> O	0.125
FAN MOTOR	FLA	0.33
ELECTRICAL DATA	V/PH/Hz	208/1/60
MCA	AMPS	SEE NOTE 10
MOCP	AMPS	SEE NOTE 10
LOCATION	---	IT ROOM
WEIGHT	LBS	35

CONDENSER UNIT DATA		
MARK	---	CU-3
MANUFACTURER	---	DAIKIN
MODEL	---	PUY-A12
CAPACITY	TONS	1
CIRCUITS	NO.	1
REFRIGERANT	TYPE	410A
EFFICIENCY	SEER/EER	18.5/-
COMPRESSOR	NO./RLA	1/7
CONDENSING FAN	NO./FLA	1/0.5
ELECTRICAL DATA	V/PH/Hz	208/1/60
MCA	AMPS	11
MOCP	AMPS	30
LOCATION	---	GRADE
WEIGHT	LBS	130
NOTES	---	1-12

- NOTES
- HVAC CONTRACTOR IS RESPONSIBLE FOR ANY ADDITIONAL ELECTRICAL COSTS WHICH MAY RESULT FROM SUBSTITUTED EQUIPMENT.
  - UNIT SHALL HAVE SINGLE POINT ELECTRICAL CONNECTION.
  - PROVIDE TXV'S AND LOW AND HIGH PRESSURE SWITCHES. IDENTIFY EACH UNIT WITH PERMANENT LABEL.
  - INSTALL FILTERS IN AIR HANDLERS PRIOR TO START-UP AND PROVIDE CLEAN SET OF FILTERS AT COMPLETION OF CONSTRUCTION.
  - APPROVED ALTERNATES: TOSHIBA.
  - MOUNT AIR HANDLER ON WALL BELOW CEILING AS INDICATED.
  - EXTEND REFRIGERANT PIPING UP THROUGH WALL TO CONDENSING UNIT ON ROOF AS REQUIRED. MAXIMUM REFRIGERATION PIPE LENGTH SHALL BE 165 FEET. MAXIMUM HEIGHT DIFFERENCE SHALL BE 100 FEET; PER MANUFACTURER.
  - PROVIDE LOW AMBIENT KIT.
  - INDOOR UNITS RECEIVE POWER FROM OUTDOOR UNITS THROUGH FIELD SUPPLIED INTERCONNECTED WIRING.
  - PROVIDE AND INSTALL OMEGA PACK MINI CONDENSATE REMOVAL.
  - INVERTER DRIVEN COMPRESSOR.



LOCKER ROOM MAKE-UP AIR PROVIDED THROUGH ARCHITECTURAL CLEARESTORY LOUVERS (TYPICAL)

**MECHANICAL PLAN**  
SCALE: 3/16"=1'-0"

ELECTRIC UNIT HEATER		
MARK	---	UH-1 THRU 3
MANUFACTURER	---	REDD-1
MODEL	---	3380
CONFIGURATION	---	DOWN FLOW
AIR FLOW	CFM	175
FAN SPEED	RPM	600
FAN MOTOR	HP/WATTS	120W
ELECTRIC HEAT	KW/STEP	2/1
ELECTRICAL DATA	V/PH/Hz	208/1/60
WEIGHT	LBS	22
LOCATION	---	TOILET ROOM
NOTES	---	1-6

- NOTES
- PROVIDE MOUNTING SUSPENSION KIT.
  - MOUNT BOTTOM OF UNIT HEATER AT 9'-0" ABOVE FINISHED FLOOR.
  - PROVIDE UNIT MOUNTED THERMOSTAT.
  - HEATER SHALL BE INSTALLED ACCORDING TO MANUFACTURER'S SPECIFICATIONS AND ALL APPLICABLE LOCAL AND NATIONAL CODES.
  - UNIT SHALL BE UL LISTED AND CSA CERTIFIED.
  - PROVIDE SINGLE POINT POWER CONNECTION.

- NOTES:
- REFER TO DRAWINGS MB-2.0 AND MB-3.0 FOR SCHEDULES AND DETAILS.
  - MAINTAIN 10'-0" BETWEEN OUTDOOR AIR INTAKES, EXHAUST OUTLETS AND PLUMBING VENTS.
  - NEW UNIT LOCATIONS ARE APPROXIMATED. CONTRACTOR SHALL BE RESPONSIBLE FOR LOCATION TO CONFORM TO THE STRUCTURAL SUPPORT OF THE WALL, ROOF, OR SLAB. COORDINATE LOCATION WITH OTHER CONTRACTORS.

- KEYED NOTES:
- TRAP 3/4" CONDENSATE PIPING AT UNIT AND EXTEND TO HUB DRAIN. COORDINATE HUB DRAIN LOCATIONS WITH PLUMBING CONTRACTOR.
  - 14x14 EXHAUST AIR DUCT UP THROUGH ROOF TO EXHAUST FAN.
  - 10" OUTSIDE AIR DUCT UP THROUGH ROOF TO SCREENED ROOF CAP.
  - RETURN AIR DROP TO RETURN PLENUM AT BASE OF UNIT. REFER TO AHU DETAIL ON SHEET MB-3.0.
  - EXTEND 3/4" CONDENSATE DRAIN TO GREEN AREA AND SPILL TO GRADE.
  - RUN REFRIGERANT PIPING OVERHEAD.
  - CEILING MOUNTED HEATER. REFER TO SCHEDULE.
  - ELECTRICAL CONNECTION TO HEATER PER MANUFACTURER'S RECOMMENDATIONS.
  - WALL MOUNTED THERMOSTAT. COORDINATE CONTROL PACKAGE ASSEMBLY FOR LOCATION IN FIELD.

MECHANICAL LEGEND	
SUPPLY DIFFUSER	REFRIGERANT PIPING (REF)
RETURN GRILLE	CONDENSATE PIPING (COND)
EXHAUST GRILLE	CLEANOUT (CO)
FLEXIBLE DUCT	THERMOSTAT
RIGID DUCT	SUPPLY AIRFLOW
DUCT UP	RETURN AIRFLOW
VOLUME DAMPER	MOTORIZED DAMPER

This item has been electronically signed and sealed by Joseph R. Stolz, PE. On 02/14/2018 using a Digital Signature. Printed copies of this document are not considered signed and sealed and the signature must be verified on any electronic copies.

Job Number: 84080  
**Colwill Engineering**  
 Consulting Engineers, Inc.  
 Engineering Business No. 9021  
 4760 East Adamo Drive Tampa, Florida 33605  
 Tel: 813-241-2020 Fax: 813-241-2424  
 © 2017 ALL RIGHTS RESERVED

**Kimley-Horn**  
 2201 West Royal Lane, Suite 275, Irving, Texas 75063  
 P.O. BOX 10000, Irving, Texas 75010  
 FLORIDA REGISTERED ENGINEERING FIRM BRN  
 FLORIDA REGISTERED LANDSCAPE ARCHITECTURE FIRM LC-C000219  
 © 2017 KIMLEY-HORN AND ASSOCIATES, INC.

Joseph R. Stolz  
 P.E. No. 58186

**BUTLER PARK AQUATIC CENTER**  
 CITY OF NORTHPORT, FL

**BATHHOUSE BUILDING**  
 MECHANICAL PLAN

Scale: AS SHOWN  
 Designed by: MP  
 Drawn by: LO  
 Checked by: MP/AR  
 Date: DECEMBER 2017  
 Project No. 48285014

SHEET  
**MB-1.0**