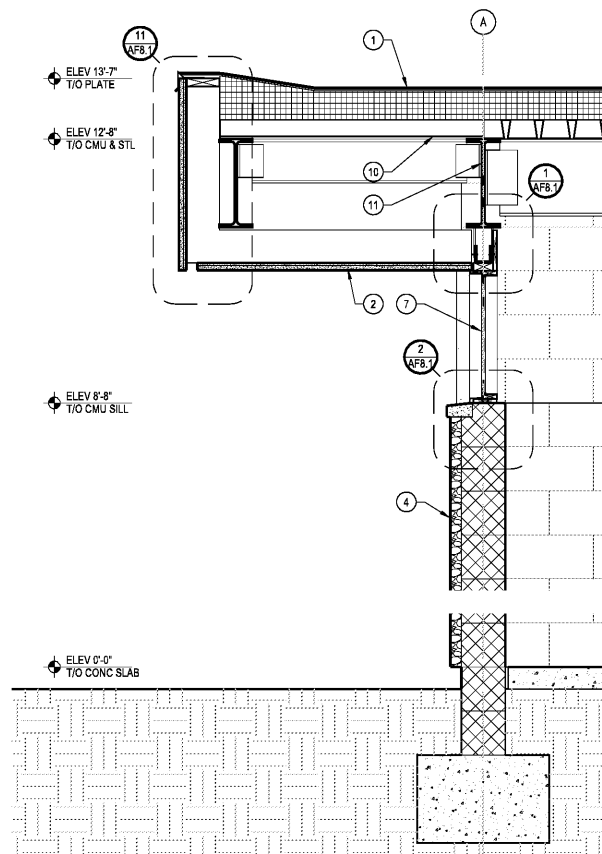
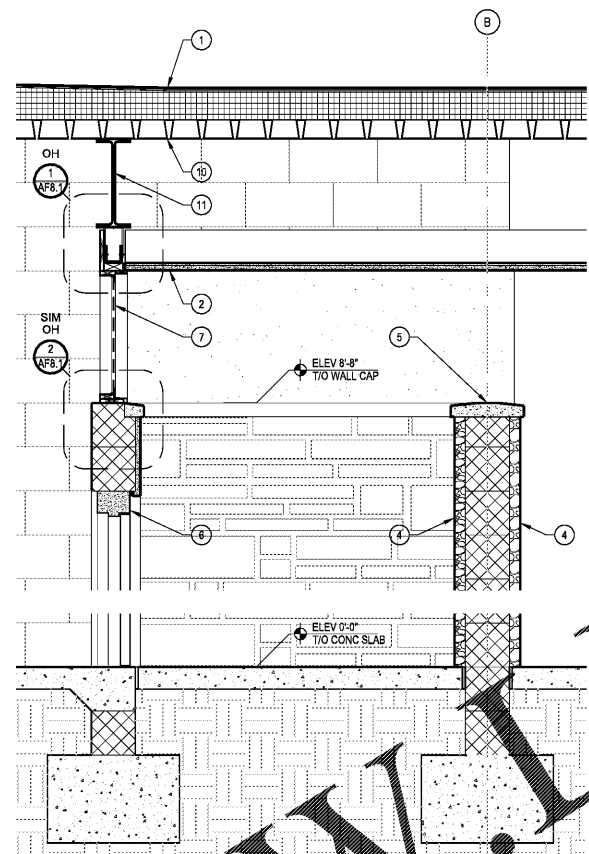


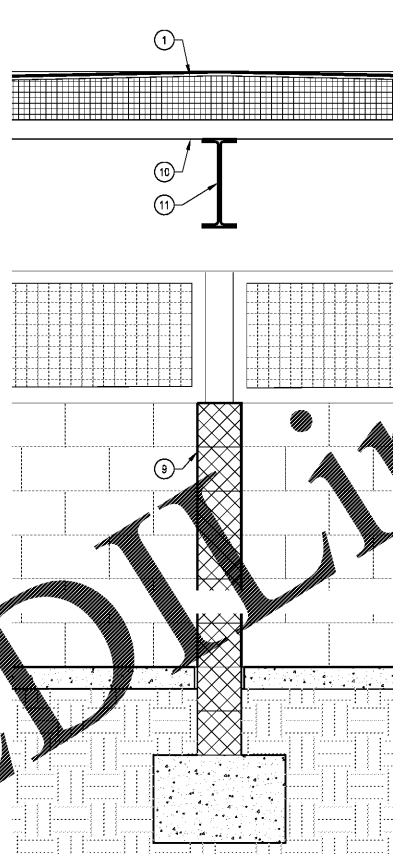
1 WALL SECTION
SCALE: 3/4" = 1'-0"



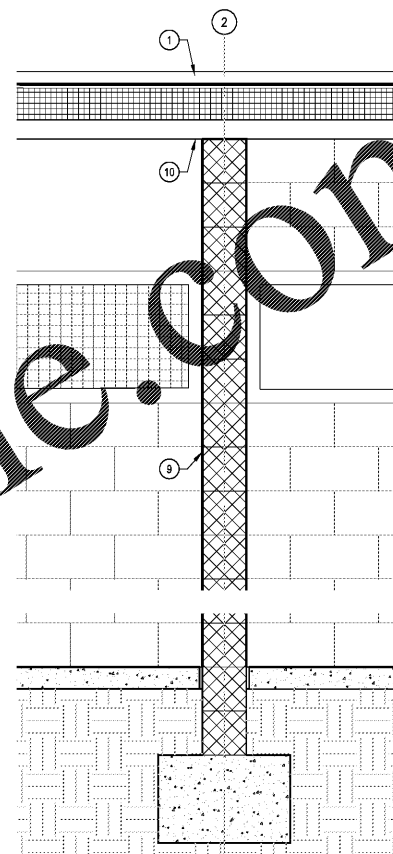
2 WALL SECTION
SCALE: 3/4" = 1'-0"



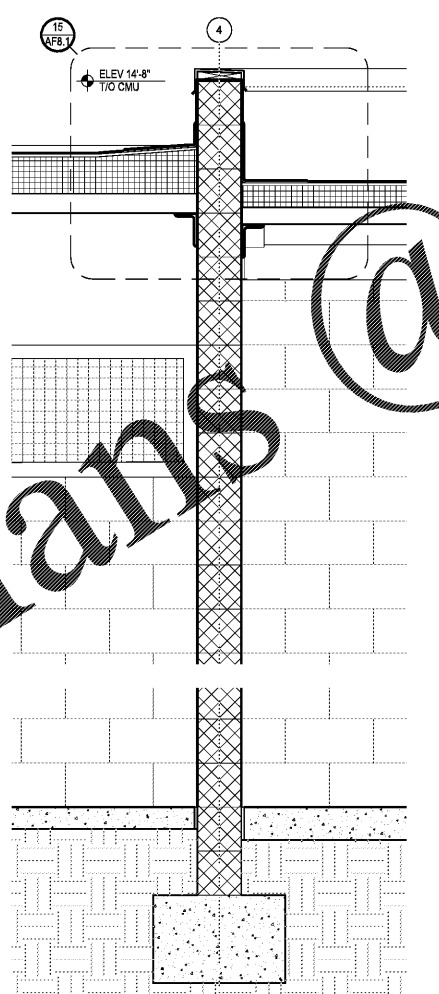
3 WALL SECTION
SCALE: 3/4" = 1'-0"



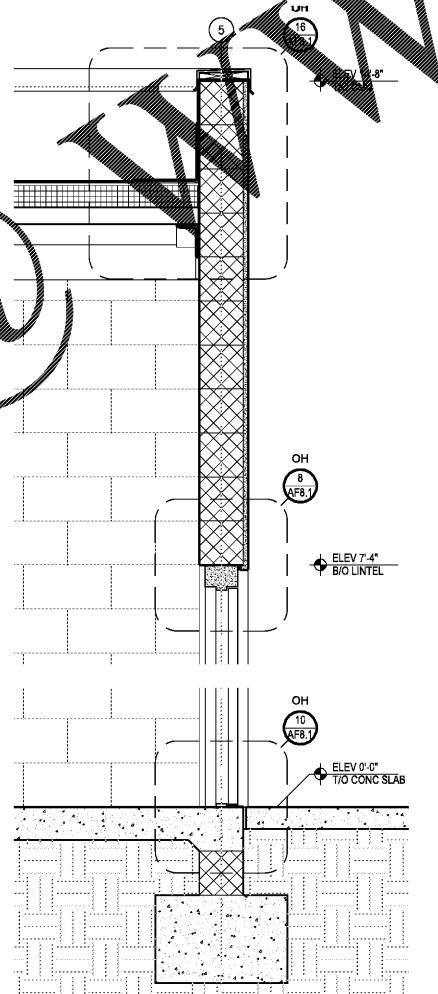
4 WALL SECTION
SCALE: 3/4" = 1'-0"



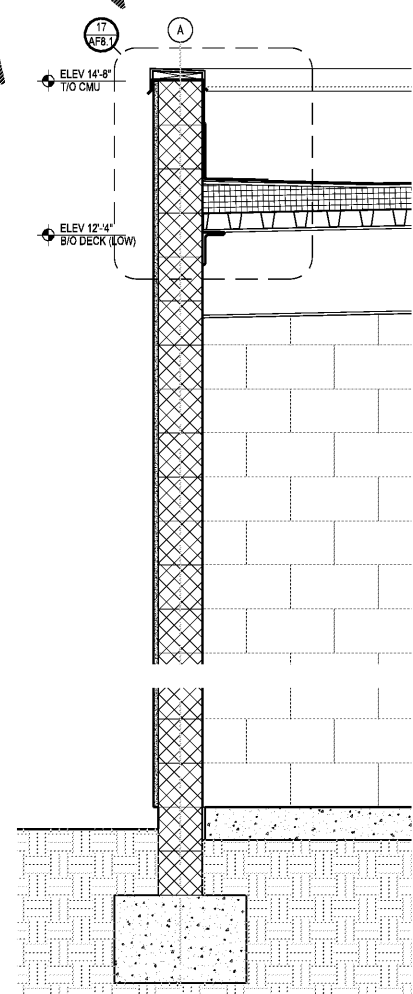
5 WALL SECTION
SCALE: 3/4" = 1'-0"



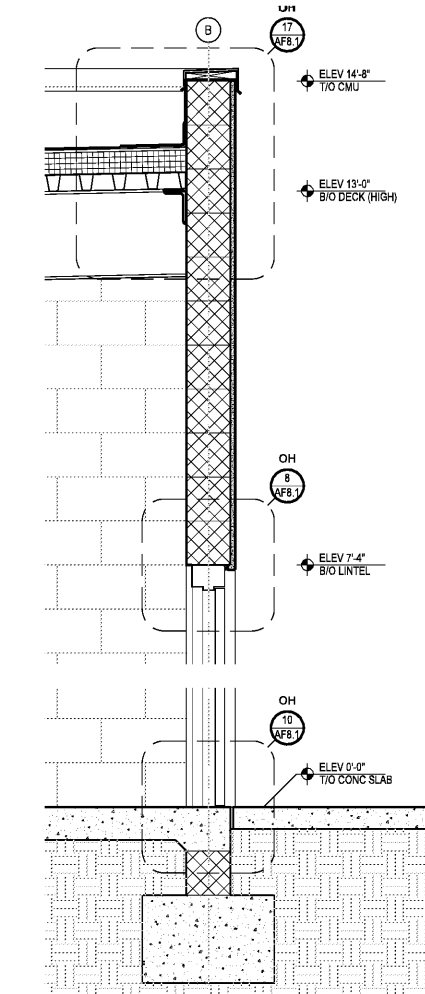
6 WALL SECTION
SCALE: 3/4" = 1'-0"



7 WALL SECTION
SCALE: 3/4" = 1'-0"



8 WALL SECTION
SCALE: 3/4" = 1'-0"



9 WALL SECTION
SCALE: 3/4" = 1'-0"

SPECIFIC NOTES

- 1 ROOFING SYSTEM. SEE SHEET AF1.2.
- 2 STUCCO ON SHEATHING. PAINT FINISH.
- 3 STUCCO ON CONC MASONRY. PAINT FINISH.
- 4 STONE VENEER ON CONC MASONRY.
- 5 CONT STONE CAP.
- 6 FRP DOOR & FRAME. SEE SHEET AF8.1.
- 7 STAINLESS STEEL SCREEN. SEE SHEET AF8.1.
- 8 PLASTIC CUBBIES.
- 9 CONC MASONRY WALL. SEE STRUCT.
- 10 STEEL DECK. SEE STRUCT.
- 11 STEEL FRAMING. SEE STRUCT.
- 12 CONC SLAB. SEE STRUCT.
- 13 CONC HOUSEKEEPING PAD. SEE STRUCT.

Order Plans @ WWW.WLDLINE.COM

Kimley-Horn

2201 West Royal Lane, Suite 275, Irving, Texas 75063
PH: 972.440.0000 FAX: 972.440.0001
FLORIDA REGISTERED ENGINEERING FIRM NO. 10000
FLORIDA REGISTERED LANDSCAPE ARCHITECTURE FIRM LC-C000219
© 2017 KIMLEY-HORN AND ASSOCIATES, INC.

Jason Jensen
2017.12.11.15
18:09:25
-05'00"

BUTLER PARK AQUATIC CENTER
CITY OF NORTHPORT, FL

FILTRATION BUILDING WALL SECTIONS

Scale: AS SHOWN
Designed by: CD
Drawn by: CD
Checked by: JJ
Date: DECEMBER 2017
Project No. 4828501.4

SHEET
AF7.1