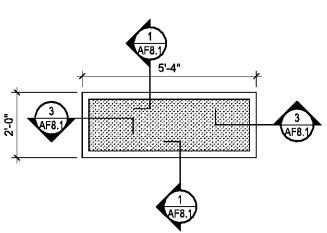
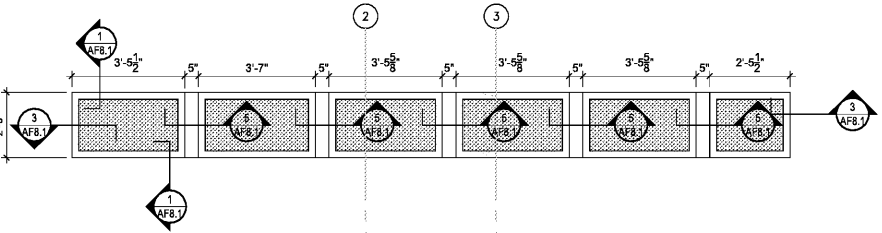


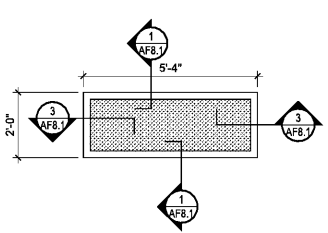
1 SCREEN ASSEMBLY A
SCALE: 3/8" = 1'-0"



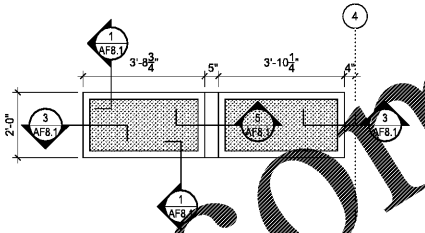
2 SCREEN ASSEMBLY B
SCALE: 3/8" = 1'-0"



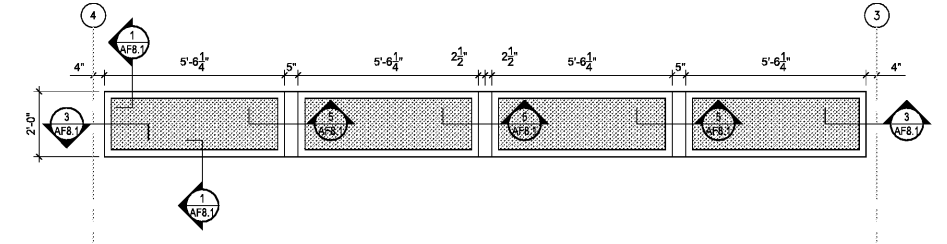
3 SCREEN ASSEMBLY C
SCALE: 3/8" = 1'-0"



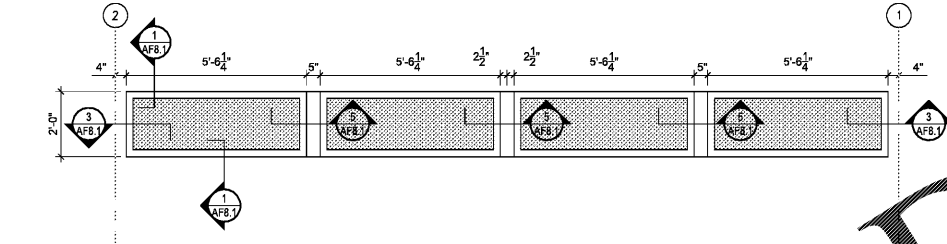
4 SCREEN ASSEMBLY D
SCALE: 3/8" = 1'-0"



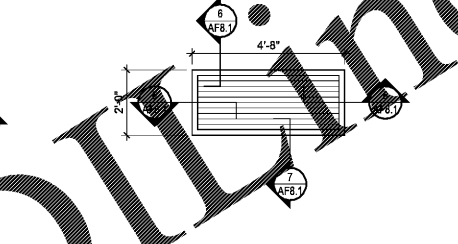
5 SCREEN ASSEMBLY E
SCALE: 3/8" = 1'-0"



6 SCREEN ASSEMBLY F
SCALE: 3/8" = 1'-0"



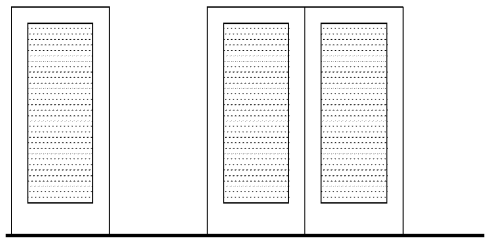
7 SCREEN ASSEMBLY G
SCALE: 3/8" = 1'-0"



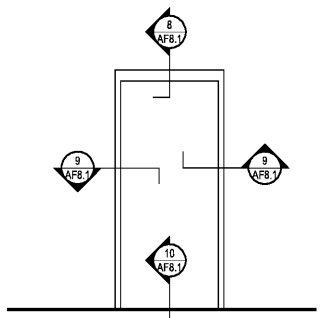
8 LOUVER ASSEMBLY H
SCALE: 3/8" = 1'-0"

OPENING ASSEMBLIES NOTES

- A. PROVIDE A FLORIDA PRODUCT APPROVAL (FP) DOCUMENT ISSUED BY THE FLORIDA DEPARTMENT OF BUSINESS & PROFESSIONAL REGULATION OR A MIAMI-DADE NOTICE OF ACCEPTANCE (NOA) DOCUMENT ISSUED BY THE MIAMI-DADE COUNTY GOVERNMENT CERTIFYING THAT EACH OF THE EXTERIOR COMPONENT AND CLADDING ASSEMBLY PRODUCTS SELECTED FOR THIS PROJECT IS CURRENTLY APPROVED FOR BUILDINGS AT THIS PROJECT LOCATION BY THE AUTHORITY HAVING JURISDICTION. INSTALL EACH ASSEMBLY PER THE MANUFACTURER'S INSTRUCTIONS AND THE INSTALLATION REQUIREMENTS INDICATED ON THE FL OR NOA DOCUMENTS.
- B. THE OPENING ASSEMBLIES DIMENSIONS INDICATED ON THESE DRAWINGS ARE TO CONVEY DESIGN INTENT ONLY. FIELD MEASURE THE ACTUAL SIZE OF THE OPENINGS PROVIDED TO RECEIVE EACH ASSEMBLY AND PROVIDE ASSEMBLIES SIZED AND CONFIGURED TO FIT SECURELY WITHIN THOSE OPENINGS.
- C. STAINLESS STEEL SCREEN ASSEMBLY. BASIS-OF-DESIGN PRODUCT: PATIO ENCLOSURE SCREEN IN ALUM FRAME MANUFACTURED BY CRISSAFE NORTH AMERICA. SCREEN: 304 HIGH TENSILE STAINLESS STEEL GRADE MESH WITH 0.035 INCH STRANDS AT 9.5 STRANDS PER SQUARE INCH. ATTACH MESH TO ALUM FRAME BY A REMOVABLE ALUM CLAMP WITH TAMPER RESISTANT SECURITY HEAD SCREWS.
- D. FRP DOOR AND FRAME ASSEMBLY. BASIS-OF-DESIGN PRODUCT: FIBERGLASS FULL LOUVER DOOR MANUFACTURED BY THE CHEM-PROF DOOR COMPANY.



TYPE 1 **TYPE 2**



TYPE 1

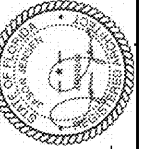
9 DOOR TYPE ELEVATIONS
SCALE: 3/8" = 1'-0"

10 DOOR FRAME TYPE ELEVATION
SCALE: 3/8" = 1'-0"

Order Plans @ www.LDinline.com

Kimley-Horn
2201 West Royal Lane, Suite 275, Irving, Texas 75063
PH: 972.261.8680
FLORIDA REGISTERED ENGINEERING FIRM NO. 16060
FLORIDA REGISTERED LANDSCAPE ARCHITECTURE FIRM LC-C000219
© 2017, KIMLEY-HORN AND ASSOCIATES, INC.

Jason Jensen
2017.12.15
18:08:45
-05'00"



BUTLER PARK
AQUATIC CENTER
CITY OF NORTHPORT, FL

FILTRATION BUILDING
OPENING ASSEMBLIES
ELEVATIONS

Scale:	AS SHOWN
Designed by:	cd
Drawn by:	cd
Checked by:	jj
Date:	DECEMBER 2017
Project No.:	48285014

SHEET
AF6.1