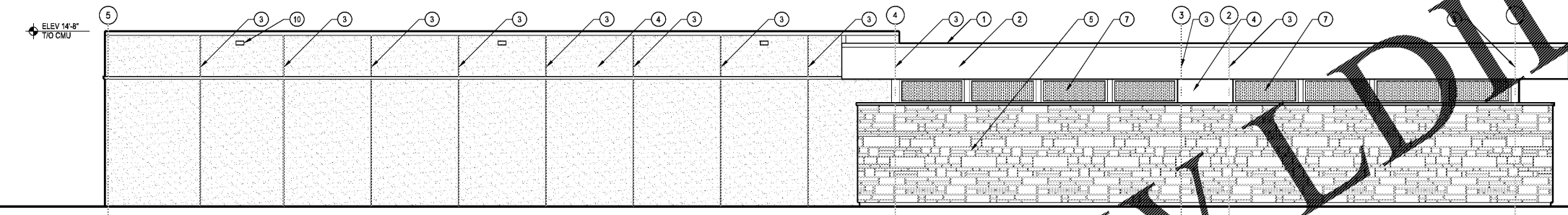
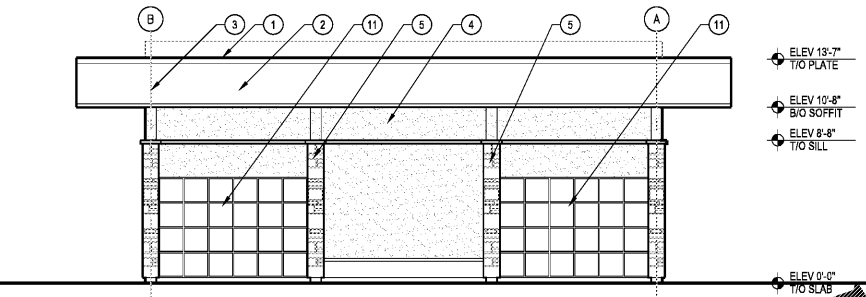


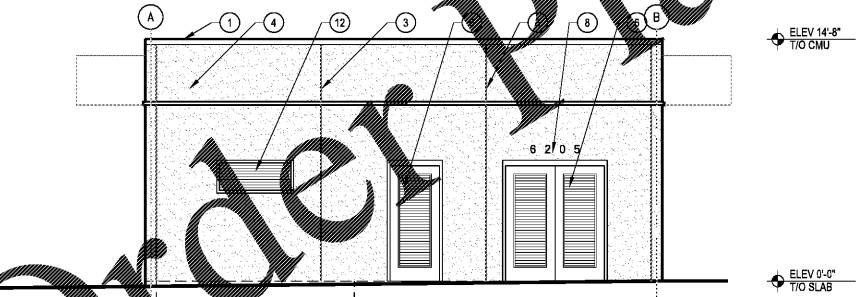
1 SOUTHWEST ELEVATION
SCALE: 3/16" = 1'-0"
0 5 10 FEET



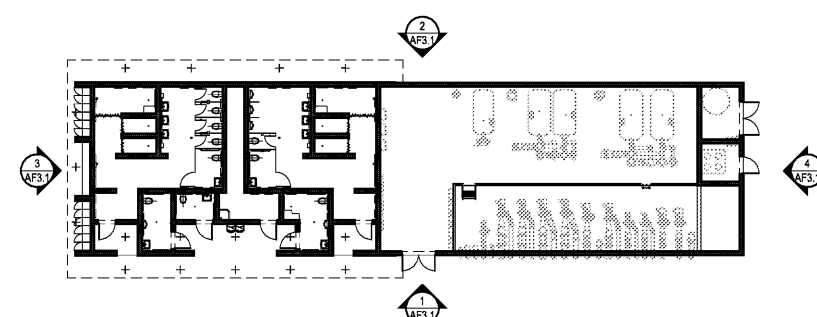
2 NORTHEAST ELEVATION
SCALE: 3/16" = 1'-0"
0 5 10 FEET



3 NORTHWEST ELEVATION
SCALE: 3/16" = 1'-0"
0 5 10 FEET



4 SOUTHEAST ELEVATION
SCALE: 3/16" = 1'-0"
0 5 10 FEET



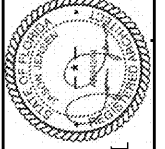
5 KEY PLAN
SCALE: 1/16" = 1'-0"
0 15 30 FEET

- SPECIFIC NOTES**
- 1 METAL COPING, PREFINISHED.
 - 2 STUCCO ON SHEATHING, PAINT FINISH.
 - 3 STUCCO CONTROL JOINT REGLET
 - 4 STUCCO ON CONC MASONRY, PAINT FINISH
 - 5 STONE VENEER ON CONC MASONRY, SEE SPEC.
 - 6 ALUM DOOR AND FRAME ASSEMBLY, SEE +NOTE 1+ THIS SHEET.
 - 7 STAINLESS STEEL SCREEN ASSEMBLY, SEE +NOTE 2+ THIS SHEET.
 - 8 ALUM DIMENSIONAL SIGNAGE CHARACTER, MOUNTED, SEE SPEC.
 - 9 HI-LO DRINKING FOUNTAIN, SEE PLUMB.
 - 10 ROOF OVERFLOW SCUMMER
 - 11 SOLID PLASTIC STORAGE CUBBIES, (48) 18"WX18"H CUBBIES.
 - 12 ALUM LOUVER, SEE MECH.

- +NOTES**
1. ALUM DOOR AND FRAME ASSEMBLY, BASIS-OF-DESIGN PRODUCT: MODEL 100BE FLUSH ALUM DOOR WITH ALUM FRAME MANUFACTURED BY CLINE ALUMINUM DOORS, INC. SEE SPEC.
 2. STAINLESS STEEL SCREEN ASSEMBLY, BASIS-OF-DESIGN PRODUCT: PATIO ENCLOSURE SCREEN IN ALUM FRAME MANUFACTURED BY CRIMSAFE NORTH AMERICA. SCREEN: 304 HIGH TENSILE STAINLESS STEEL GRADE MESH WITH 0.035 INCH STRANDS AT 8.5 STRANDS PER SQUARE INCH. ATTACH MESH TO ALUM FRAME BY A REMOVABLE ALUM CLAMP WITH TAMPER RESISTANT SECURITY HEAD SCREWS.

Kimley-Horn
2201 West Royal Lane, Suite 275, Irving, Texas 75063
PH: 972.440.0000
FLORIDA REGISTERED ENGINEERING FIRM #9819
FLORIDA REGISTERED LANDSCAPE ARCHITECTURE FIRM LC-C000219
© 2017 KIMLEY-HORN AND ASSOCIATES, INC.

Jason Jensen
2017.12.15
18:05:52
-05'00"



BUTLER PARK
AQUATIC CENTER
CITY OF NORTHPORT, FL

FILTRATION BUILDING
EXTERIOR ELEVATIONS

Scale:	AS SHOWN
Designed by:	CD
Drawn by:	CD
Checked by:	JJ
Date:	DECEMBER 2017
Project No.:	48285014

SHEET
AF3.1

Order Plans @ www.IDLine.com