

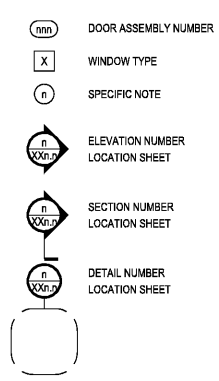
ABBREVIATIONS

A/C	AIR CONDITIONING
AFF	ABOVE FINISHED FLOOR
ALUM	ALUMINUM
B/O	BOTTOM OF
B/W	BETWEEN
CLG	CEILING
CMT	CERAMIC MOSAIC TILE
CT	CERAMIC TILE
CONC	CONCRETE
CMU	CONCRETE MASONRY UNIT
CONT	CONTINUOUS
CJ	CONTROL JOINT
COORD	COORDINATE
DR	DOOR
DW	DISH WASHER
ELEV	ELEVATION
EWC	ELECTRIC WATER COOLER
EQ	EQUAL
EXIST	EXISTING
EXT	EXTERIOR
FF	FACE OF FRAMING
FIN	FINISH
FACP	FIRE ALARM CONTROL PANEL
FE	FIRE EXTINGUISHER
FEC	FIRE EXTINGUISHER CABINET
FD	FLOOR DRAIN
GALV	GALVANIZED
GC	GENERAL CONTRACTOR
GWB	GYPSUM WALLBOARD
HC	HANDICAPPED
HM	HOLLOW METAL
HORIZ	HORIZONTAL
LAV	LAVATORY
MFR	MANUFACTURER
MAX	MAXIMUM
MTL	METAL
MIN	MINIMUM
MO	MASONRY OPENING
MTD	MOUNTED
NO	NUMBER
NOM	NOMINAL
NTS	NOT TO SCALE
NC	NOT IN CONTRACT
NIS	NOT IN SCOPE
OC	ON CENTER
OH	OVERHEAD
PLAM	PLASTIC LAMINATE
PREFAB	PREFABRICATED
PREFIN	PREFINISHED
RO	ROUGH OPENING
SS	STAINLESS STEEL
THK	THICK
THR	THRESHOLD
T&B	TOP AND BOTTOM
TO	TOP OF
TYP	TYPICAL
VCT	VINYL COMPOSITION TILE
UON	UNLESS OTHERWISE NOTED
VERT	VERTICAL
VF	VERIFY IN FIELD
WC	WATER CLOSET
WD	WOOD
W	WITH
XTR	EXISTING TO REMAIN

GENERAL NOTES

- PROVIDE ALL THE ITEMS, PRODUCTS AND FEATURES AS DESCRIBED AND SPECIFIED WITHIN THIS SET OF DRAWINGS AND WITHIN THE TECHNICAL SPECIFICATIONS MANUAL. SUBSTITUTION REQUESTS MAY BE SUBMITTED TO THE ARCHITECT FOR CONSIDERATION. DO NOT MAKE SUBSTITUTIONS WITHOUT THE APPROVAL OF THE ARCHITECT. WHERE A "BASIS-OF-DESIGN" PRODUCT IS SPECIFIED, A COMPARABLE PRODUCT MAY BE PROVIDED, SUBJECT TO COMPLIANCE WITH THE REQUIREMENTS OF THE CONTRACT DOCUMENTS.
- SEE THE ARCHITECTURAL (A) SHEETS FOR ALL ARCHITECTURAL ITEMS. SEE THE STRUCTURAL (S) SHEETS FOR ALL STRUCTURAL ITEMS INCLUDING FOOTINGS, WALLS, COLUMNS, BEAMS, SLABS AND DECKS. SEE THE MECHANICAL (M), ELECTRICAL AND PLUMBING (P) SHEETS FOR ALL MECHANICAL, ELECTRICAL AND PLUMBING ITEMS AND SYSTEMS INCLUDING EQUIPMENT, DEVICES AND FIXTURES. IF THE DEPICTION OR DESCRIPTION OF ANY ITEM DOES NOT AGREE WITH THE DEPICTION OR DESCRIPTION OF THAT SAME ITEM ON ANOTHER DRAWING WITHIN THE SET OR APPEARS TO BE OTHERWISE INCONSISTENT, ISSUE A REQUEST FOR INFORMATION (RFI) TO THE ARCHITECT AND DO NOT PROCEED WITH THE WORK RELATED TO THE ITEM IN QUESTION UNTIL THE ARCHITECT REPLIES WITH A CLARIFICATION OR PROVIDES SUPPLEMENTAL INSTRUCTIONS RELATED TO THAT ITEM.
- DO NOT SCALE DRAWINGS. THE DIMENSIONS ON THE DRAWINGS GOVERN. WRITTEN NOTES REFERENCING AN ITEM OR FEATURE WITH THE WORD "TYPICAL" (TYP) APPLY TO ALL IDENTICAL ITEMS OR FEATURES INDICATED ELSEWHERE ON THESE DRAWINGS.
- SUBMIT SHOP DRAWINGS, PRODUCT DATA AND SAMPLES TO THE ARCHITECT FOR REVIEW AS REQUIRED BY THE CONTRACT DOCUMENTS. DO NOT PROCEED WITH WORK RELATED TO SUBMITTALS MARKED "REJECTED" OR "REVISE AND RESUBMIT" BY THE ARCHITECT OR THE ARCHITECT'S CONSULTANTS. SUBMITTALS MARKED "APPROVED," "NO EXCEPTION TAKEN" OR "MAKE CORRECTIONS NOTED" DO NOT SUPERSEDE THE NEED TO COMPLY WITH THE REQUIREMENTS OF THE CONTRACT DOCUMENTS.
- PROVIDE A FLORIDA PRODUCT APPROVAL (FL) DOCUMENT ISSUED BY THE FLORIDA DEPARTMENT OF BUSINESS & PROFESSIONAL REGULATION OR A MIAMI-DADE NOTICE OF ACCEPTANCE (NOA) DOCUMENT ISSUED BY THE MIAMI-DADE COUNTY GOVERNMENT CERTIFYING THAT EACH EXTERIOR COMPONENT AND CLADDING PRODUCT SELECTED FOR THIS PROJECT IS CURRENTLY APPROVED FOR BUILDINGS AT THIS PROJECT LOCATION BY THE AUTHORITY HAVING JURISDICTION. INSTALL EACH PRODUCT PER THE MANUFACTURER'S INSTRUCTIONS AND THE INSTALLATION REQUIREMENTS INDICATED ON THE FL OR NOA DOCUMENTS.
- PROVIDE ALL ITEMS AND FEATURES DEPICTED AND DESCRIBED ON THESE DRAWINGS AND OTHER CONTRACT DOCUMENTS SO THEY ARE PROPERLY PLACED, ALIGNED, PLUMB, SECURED, FINISHED AND FUNCTIONING AS INTENDED. PROVIDE FINISHED WORK THAT MEETS OR EXCEEDS CURRENT INDUSTRY STANDARDS FOR QUALITY AND PERFORMANCE. ARRANGE AND CONDUCT INSPECTIONS OF THE FINISHED WORK WITH THE OWNER, THE ARCHITECT, AND THE AUTHORITY HAVING JURISDICTION. APPROVAL OF THE WORK BY THESE OR ANY OTHER PARTY OR AGENCY DOES NOT SUPERSEDE THE NEED TO COMPLY WITH THE REQUIREMENTS OF THE CONTRACT DOCUMENTS.
- REMOVE CONSTRUCTION DEBRIS FROM THE SITE AS REQUIRED TO PREVENT ACCUMULATION. TRANSPORT THESE MATERIALS OFF THE SITE IN A MANNER THAT WILL PREVENT SPILLAGE AND LEGALLY DISPOSE OF THESE MATERIALS AT AN EPA APPROVED DISPOSAL OR RECYCLING FACILITY.
- KEEP COMPLETE AND LEGIBLE SETS OF CONSTRUCTION DOCUMENTS, ADDENDA, SUPPLEMENTAL INSTRUCTIONS, SUPPLEMENTAL DRAWINGS, MEETING NOTES, ETC. TOGETHER AND READILY AVAILABLE IN AN APPROPRIATE LOCATION ON SITE.
- PROVIDE FIRE-RETARDANT TREATED WOOD FOR ALL WOOD BLOCKING & NAILERS USED IN CONCEALED SPACES.
- CONCEAL CONDUIT, PIPING, ETC. AS MUCH AS POSSIBLE. PROVIDE ACCESSIBLE JUNCTION BOXES, VALVES, CLEANOUTS, ETC., AS REQUIRED BY CODE.
- PROVIDE FLAT WALKING SURFACES THAT ARE AT THE SAME LEVEL ON BOTH SIDES OF ALL INTERIOR DOOR OPENINGS AND WALKING SURFACES ON THE EXTERIOR SIDE OF EXTERIOR DOOR OPENING THRESHOLDS THAT ARE NO MORE THAN 14-INCH BELOW THE INTERIOR WALKING SURFACE AT THE DOOR OPENING THRESHOLD AND THAT SLOPE DOWN NO MORE THAN 1:50 FOR A DISTANCE OF AT LEAST 44 INCHES IN THE DIRECTION OF TRAVEL AWAY FROM THE EXTERIOR DOOR OPENING THRESHOLD.
- PROVIDE AUTOMATIC FIRE (SPRINKLERS) PROTECTION SYSTEM FOR THE ENTIRE INTERIOR ENCLOSED AND EXTERIOR COVERED AREAS OF THE FILTRATION BUILDING PER NFPA 13, THE FLORIDA BUILDING CODE SIXTH EDITION, THE FLORIDA FIRE PREVENTION CODE SIXTH EDITION, AND ALL OTHER CURRENT STATE AND LOCAL REQUIREMENTS. PROVIDE DESIGN DOCUMENTS INCLUDING DETAILED (SHOP) DRAWINGS AND CALCULATIONS, WITH SPECIFICATIONS FOR ALL RELATED EQUIPMENT AND MATERIALS. PRODUCED, SIGNED, DATED, AND SEALED BY A FLORIDA LICENSED FIRE PROTECTION DESIGN ENGINEER AND SUBMIT THESE DOCUMENTS TO THE AUTHORITY HAVING JURISDICTION AND TO THE ARCHITECT FOR REVIEW AND APPROVAL PRIOR TO COMMENCING THE FIRE PROTECTION SYSTEM INSTALLATION WORK. COORDINATE THE DESIGN AND INSTALLATION OF THE FIRE PROTECTION SYSTEM SO THAT THE REQUIRED PROTECTION IS PROVIDED WITHOUT CONFLICTING WITH THE ARCHITECTURAL, STRUCTURAL, MECHANICAL, ELECTRICAL AND PLUMBING BUILDING OBJECTS, DEVICES AND COMPONENTS PER THIS SET OF DRAWINGS AND SPECIFICATIONS.

DRAWING LEGEND



CODE INFORMATION

SCOPE OF PROJECT
 PROVIDE THE NEW FILTRATION BUILDING DEPICTED AND DESCRIBED ON THESE DRAWINGS CONTAINING EQUIPMENT, TOILET AND SHOWER FACILITIES SERVING A PUBLIC AQUATICS CENTER.

PROJECT LOCATION
 BUTLER PARK AQUATICS CENTER, NORTH PORT, FL

APPLICABLE CODES & REGULATIONS

BUILDING	FLORIDA BUILDING CODE, FIFTH EDITION (2014), BUILDING
MECHANICAL	FLORIDA BUILDING CODE, FIFTH EDITION (2014), MECHANICAL
PLUMBING	FLORIDA BUILDING CODE, FIFTH EDITION (2014), PLUMBING
ACCESSIBILITY	FLORIDA BUILDING CODE, FIFTH EDITION (2014), ACCESSIBILITY
FIRE PREVENTION	FLORIDA FIRE PREVENTION CODE, FIFTH EDITION, NFPA 101, 2012
LIFE SAFETY	FLORIDA FIRE PREVENTION CODE, FIFTH EDITION, NFPA 101, 2012
ELECTRICAL	(NFPA 70) 2011 NEC

CODE DATA

USE GROUP:	MISCELLANEOUS GROUP U - PUBLIC SWIMMING POOL BUILDING
TYPE OF CONSTRUCTION:	TYPE 2B
FIRE PROTECTION:	NO
STORIES (HEIGHT):	1 (15 FEET)
AREA:	3620 SF
OCCUPANT LOAD:	35 PERSONS
WALL & CEILING FINISH:	CLASS A OR B
FLOOR FINISH:	CLASS I OR II

PLUMBING FIXTURE TABULATION - MEN

TYPE	REQUIRED	PROVIDED
WATER CLOSETS	2	2
URINALS	3	3
LAVATORIES:	3	4
SHOWERS:	0	3

PLUMBING FIXTURE TABULATION - WOMEN

TYPE	REQUIRED	PROVIDED
WATER CLOSETS	8	8*
LAVATORIES:	3	4
SHOWERS:	0	3

*INCLUDES (3) FAMILY TOILET ROOMS WATER CLOSETS

PLUMBING FIXTURE TABULATION - OTHER

TYPE	REQUIRED	PROVIDED
DRINKING FOUNTAIN:	1	1*
SERVICE SINK:	1	1

*COMBINATION "HI-LO" (ACCESSIBLE) DRINKING FOUNTAIN

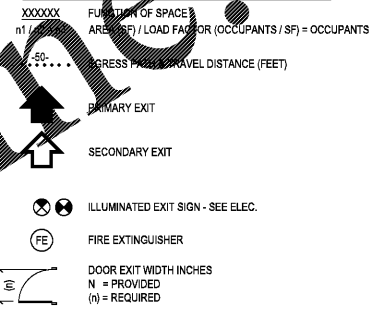
NOTES TO PLAN REVIEWERS

THE REQUIRED MEN'S AND WOMEN'S PLUMBING FIXTURES LISTED IN THE PLUMBING FIXTURE TABULATION ON THIS SHEET ARE THE FIXTURES REQUIRED TO SERVE 10,000 SQUARE OF POOL AREA PER THE FLORIDA BUILDING CODE, FIFTH EDITION (2014), BUILDING, SECTION 454.1.6.1, TABLE 454.1.6.1 "PUBLIC SWIMMING POOL - REQUIRED FIXTURE COUNT". THIS 10,000 SQUARE FEET IS THE AREA OF THOSE SWIMMING POOLS WITHIN THE BUTLER PARK AQUATICS CENTER THAT ARE WITHIN 200-FOOT WALKING DISTANCE TO THE TOILET ROOM ENTRY DOORS OF THIS (FILTRATION) BUILDING FROM THE NEAREST WATERS EDGE OF THOSE POOLS. THE PLUMBING FIXTURES REQUIRED TO SERVE THE REMAINDER OF THE SWIMMING POOLS WITHIN THE BUTLER PARK AQUATICS CENTER COMPLEX ARE LOCATED WITHIN THE BATHHOUSE BUILDING. SEE SHEET AB0.1.

THERE ARE NO MECHANICALLY COOLED (AIR CONDITIONED) OR HEATED SPACES WITHIN THIS BUILDING (FILTRATION BUILDING).

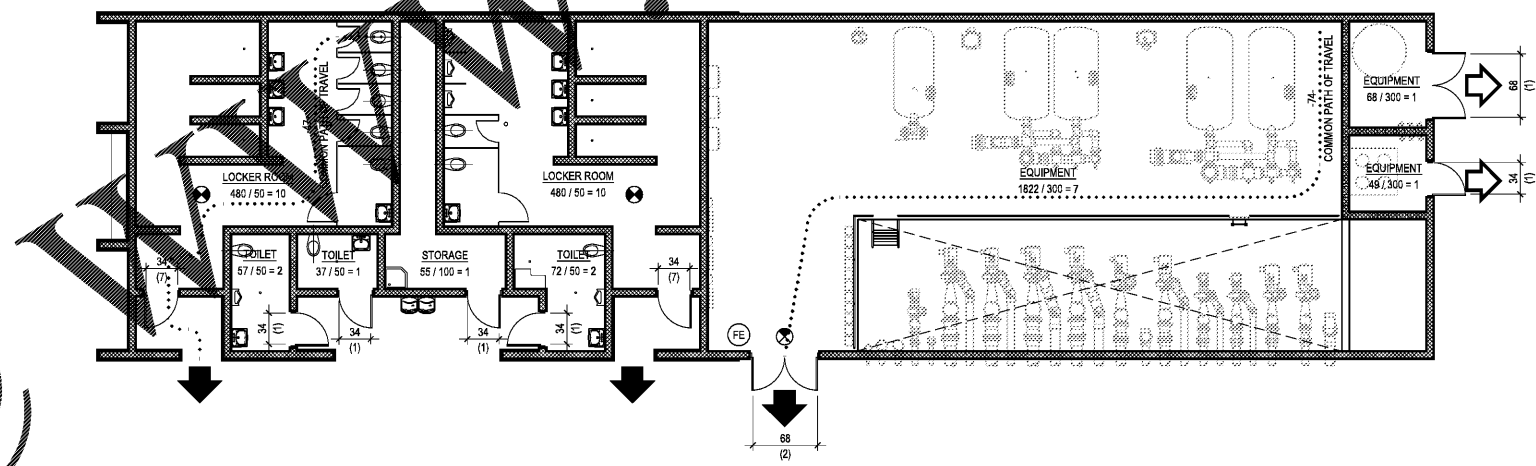
THE DESIGN OF THE FIRE PROTECTION SYSTEM IS DELEGATED TO THE CONTRACTOR. SEE GENERAL NOTE 12 THIS SHEET.

LIFE SAFETY PLAN LEGEND



TRAVEL DISTANCE

EXIT ACCESS TRAVEL DISTANCE (ALLOWED) FEET: (260) 74
 COMMON PATH TRAVEL DISTANCE (ALLOWED) FEET: (100) 74
 DEAD END LENGTH (ALLOWED) FEET: (20) 0

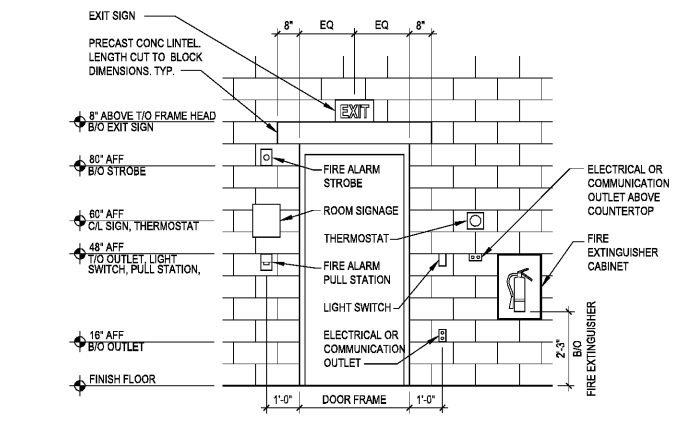


1 LIFE SAFETY PLAN
 SCALE: 1/8" = 1'-0"

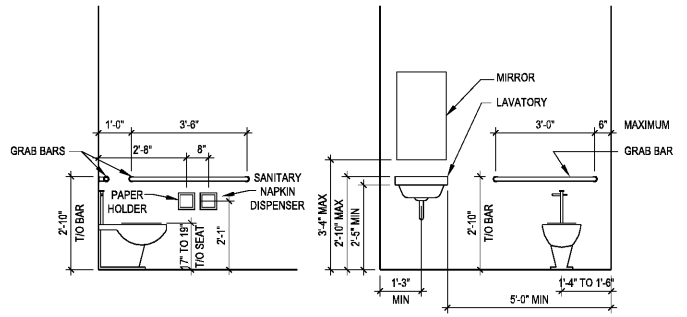
APPROVED* EXTERIOR COMPONENTS & CLADDING PRODUCTS LISTING**

CATEGORY	SUB CATEGORY	MATERIAL	APPLICANT	DESCRIPTION	APPROVAL NUMBER
ROOFING	SINGLE-PLY MEMBRANE	TPO	CARLISLE SYNTec SYSTEMS	SURE-WELD 80 MIL TPO	NOA 14-0626
EXTERIOR DOORS	SWINGING DOOR ASSEMBLIES	FIBERGLASS	CHEM-PRUF DOOR CO.	FULL LOUVER	FL14573
PANEL WALLS	STOREFRONTS	ALUMINUM	KAWNEER COMPANY, INC.	SERIES IR-501	FL12242
WINDOWS	HORIZONTAL SLIDER	ALUMINUM	TRACO WINDOWS AND DOORS, INC.	SERIES TR-6800	FL12242
PANEL WALLS	WALL LOUVER	ALUMINUM	THE AEROLITE COMPANY, LLC	MODEL K950MD	FL12942
SCREEN ENCLOSURES	---	STAINLESS STEEL	CRIMS SAFE NORTH AMERICA	ENCLOSURE GREEN	NOA 15-10137

* "FL" = FLORIDA PRODUCT APPROVAL. "NOA" = NOTICE OF ACCEPTANCE (MIAMI-DADE COUNTY)
 ** BASIS-OF-DESIGN PRODUCTS: COMPARABLE PRODUCTS MAY BE PROVIDED SUBJECT TO COMPLIANCE WITH THE TECHNICAL SPECIFICATIONS AND WITH GENERAL NOTE 12 OF THIS SHEET.



2 TYPICAL DEVICE PLACEMENT DIAGRAM
 SCALE: 3/8" = 1'-0"



3 ACCESSIBLE TOILET ACCESSORIES PLACEMENT DIAGRAM
 SCALE: 3/8" = 1'-0"

Order Plans

Kimley-Horn
 2201 West Royal Lane, Suite 275, Irving, Texas 75063
 PH: 972.440.0000 FAX: 972.440.0001
 FLORIDA REGISTERED PROFESSIONAL ENGINEER FIRM NO. 698
 FLORIDA REGISTERED LANDSCAPE ARCHITECTURE FIRM NO. 0000219
 © 2017 KIMLEY-HORN AND ASSOCIATES, INC.

Jason Jensen
 2018.02.14
 10:03:42
 -05'00"

BUTLER PARK AQUATIC CENTER
 CITY OF NORTHPORT, FL

FILTRATION BUILDING GENERAL INFORMATION

Scale: AS SHOWN
 Designed by: CD
 Drawn by: CD
 Checked by: JJ
 Date: DECEMBER 2017
 Project No. 48285014

SHEET
 AF0.1