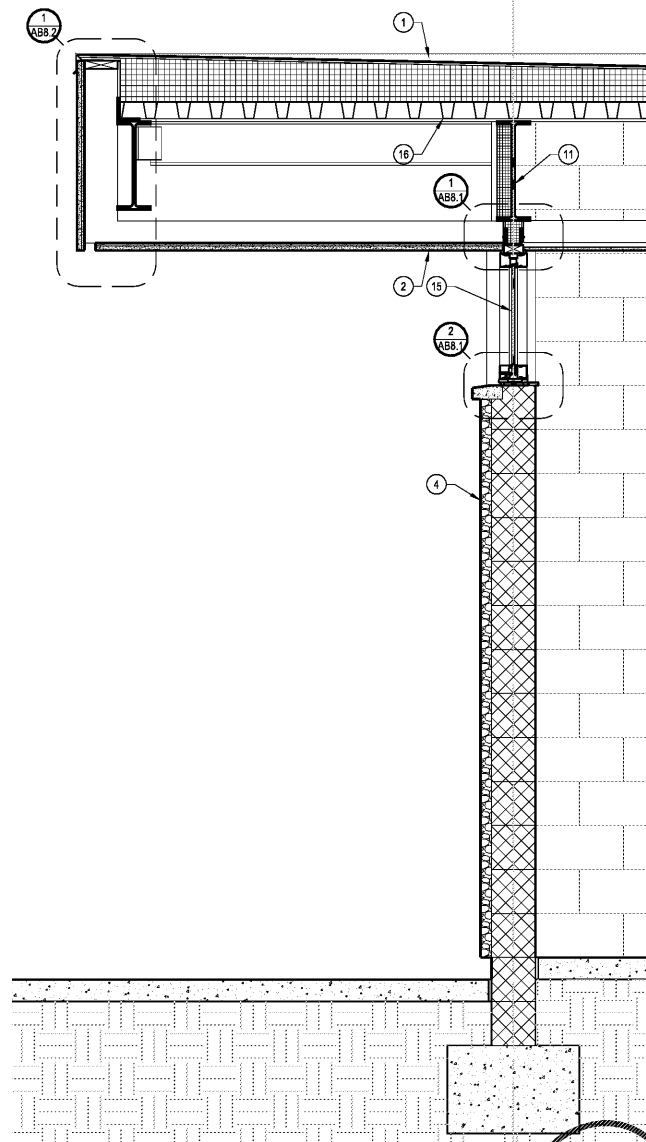
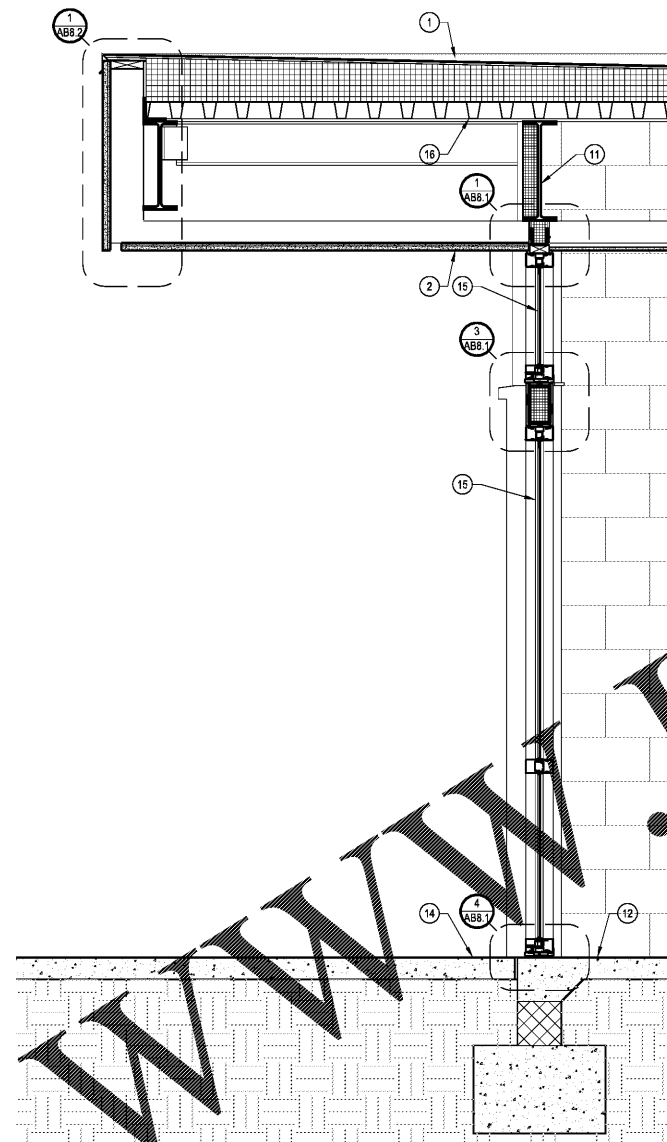


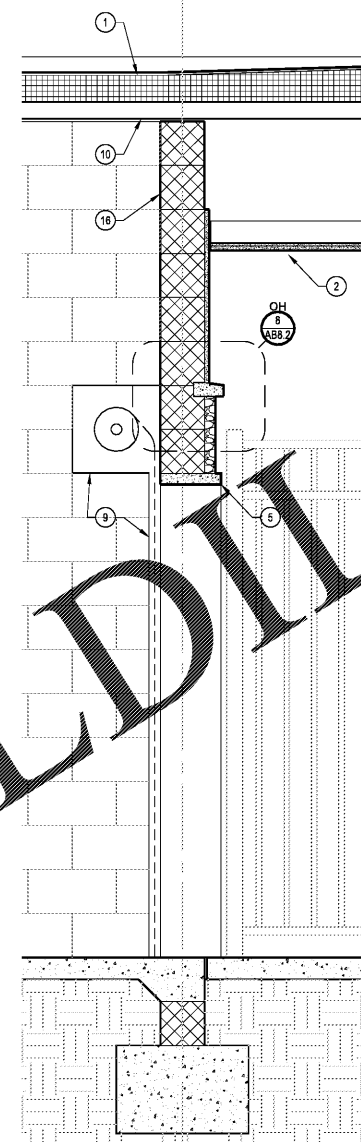
1 WALL SECTION
SCALE: 3/4" = 1'-0"



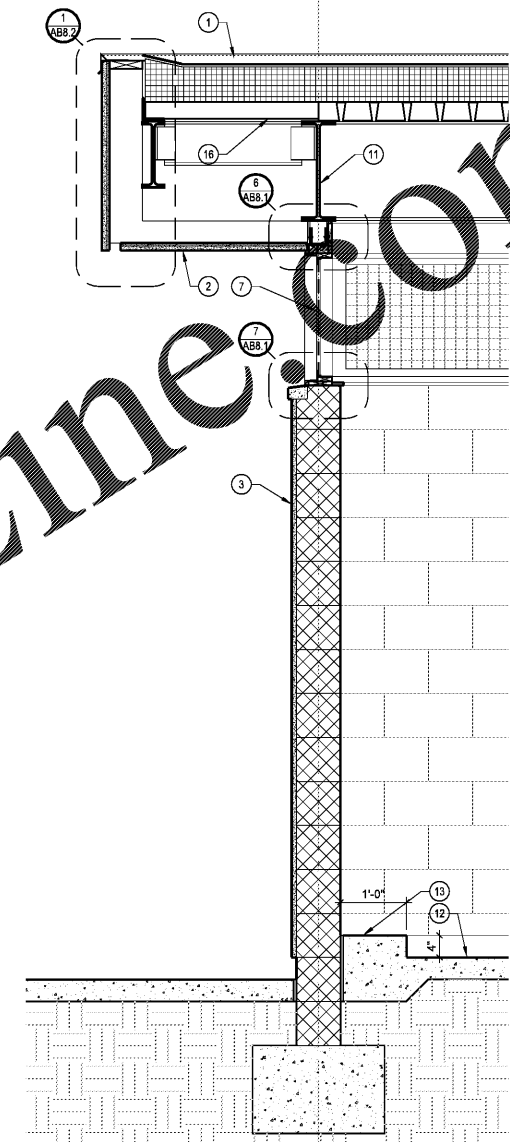
2 WALL SECTION
SCALE: 3/4" = 1'-0"



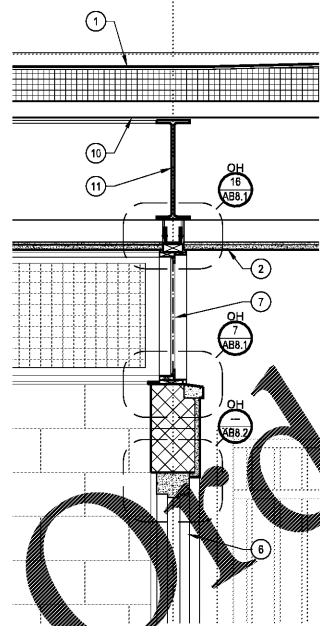
3 WALL SECTION
SCALE: 3/4" = 1'-0"



4 WALL SECTION
SCALE: 3/4" = 1'-0"



5 WALL SECTION
SCALE: 3/4" = 1'-0"



6 WALL SECTION
SCALE: 3/4" = 1'-0"

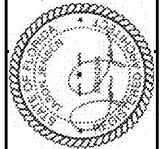
SPECIFIC NOTES

- 1 ROOFING SYSTEM. SEE SHEET AB1.2.
- 2 STUCCO ON SHEATHING. PAINT FINISH.
- 3 STUCCO ON CONC MASONRY. PAINT FINISH.
- 4 STONE VENEER ON CONC MASONRY
- 5 CONT STONE CAP
- 6 FRP DOOR & FRAME ASSEMBLY. SEE SHEET AB6.1.
- 7 STAINLESS STEEL SCREEN ASSEMBLY. SEE SHEET AB6.1.
- 8 PLASTIC CUBBIES
- 9 ROLLUP STEEL DOOR. SEE SHEET AB6.1.
- 10 STEEL DECK. SEE STRUCT.
- 11 STEEL FRAMING. SEE STRUCT.
- 12 CONC SLAB. SEE STRUCT.
- 13 CONC HOUSEKEEPING PAD. SEE STRUCT.
- 14 CONC POOL DECK. SEE CIVIL.
- 15 ALUM STOREFRONT ASSEMBLY. SEE SHEET AB6.1.
- 16 CONC MASONRY WALL. SEE STRUCT.

Scale:	AS SHOWN
Designed by:	CD
Drawn by:	CD
Checked by:	JJ
Date:	DECEMBER 2017
Project No.:	4828501.4

BATHHOUSE BUILDING
WALL SECTIONS

SHEET
AB7.1



Jason Jeresen
2017.12.15
16:12:40
-05'00'

BUTLER PARK
AQUATIC CENTER
CITY OF NORTHPORT, FL

Kimley-Horn
2201 West Royal Lane, Suite 275, Irving, Texas 75063
PH: 972.440.0000
FLORIDA REGISTERED PROFESSIONAL ENGINEERING FIRM
FLORIDA REGISTERED LANDSCAPE ARCHITECTURE FIRM LC-C000219
© 2017 KIMLEY-HORN AND ASSOCIATES, INC.