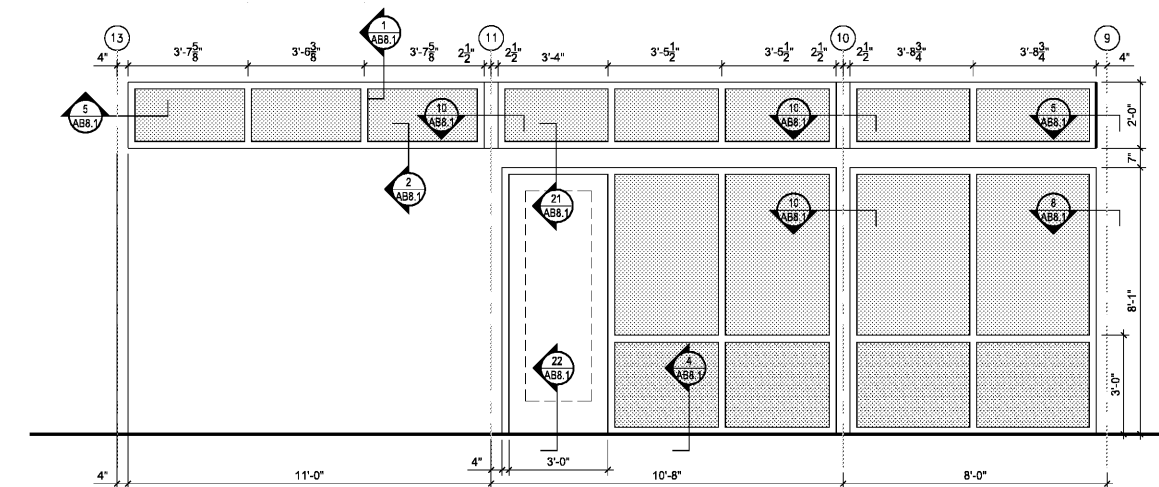


OPENING ASSEMBLIES NOTES

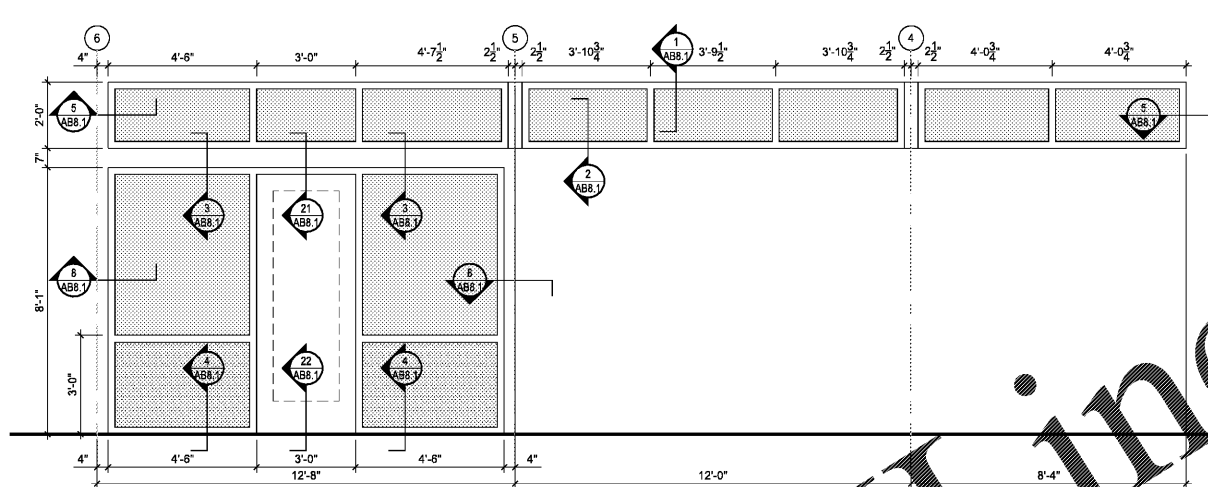
- A. PROVIDE A FLORIDA PRODUCT APPROVAL (FP) DOCUMENT ISSUED BY THE FLORIDA DEPARTMENT OF BUSINESS & PROFESSIONAL REGULATION OR A MIAMI-DADE NOTICE OF ACCEPTANCE (NOA) DOCUMENT ISSUED BY THE MIAMI-DADE COUNTY GOVERNMENT CERTIFYING THAT EACH OF THE EXTERIOR COMPONENT AND CLADDING ASSEMBLY PRODUCTS SELECTED FOR THIS PROJECT IS CURRENTLY APPROVED FOR BUILDINGS AT THIS PROJECT LOCATION BY THE AUTHORITY HAVING JURISDICTION. INSTALL EACH ASSEMBLY PER THE MANUFACTURER'S INSTRUCTIONS AND THE INSTALLATION REQUIREMENTS INDICATED ON THE FP OR NOA DOCUMENTS.
- B. THE OPENING ASSEMBLIES DIMENSIONS INDICATED ON THESE DRAWINGS ARE TO COMPLY WITH THE MINIMUM FIELD MEASURE THE ACTUAL SIZE OF THE OPENINGS PROVIDED TO RECEIVE EACH ASSEMBLY AND PROVIDE ASSEMBLIES SIZED AND CONSTRUCTED TO FIT SECURELY WITHIN THOSE OPENINGS.
- C. ALUM STOREFRONT FRAME AND GLAZING ASSEMBLY. BASIS-OF-DESIGN PRODUCT: SERIES TR-8800 MANUFACTURED BY THE KAWNEER COMPANY, INC.
- D. ALUM SLIDING WINDOW ASSEMBLY. BASIS-OF-DESIGN PRODUCT: SERIES TR-8800 MANUFACTURED BY TRACO WINDOWS AND DOORS, INC.
- E. STAINLESS STEEL SCREEN ASSEMBLY. BASIS-OF-DESIGN PRODUCT: PATIO ENCLOSURE SCREEN IN ALUM FRAME MANUFACTURED BY CRIMSAFE NORTH AMERICA. SCREEN: 304 HIGH TENSILE STAINLESS STEEL, GRADE MESH WITH 0.036 INCH STRANDS AT 9.5 STRANDS PER SQUARE INCH. ATTACH MESH TO ALUM FRAME BY A REMOVABLE ALUM CLAMP WITH TAMPER RESISTANT SECURITY HEAD SCREWS.
- F. FRP DOOR AND FRAME ASSEMBLY. BASIS-OF-DESIGN PRODUCT: FIBERGLASS FULL LOUVER DOOR MANUFACTURED BY THE CHEM-PROOF DOOR COMPANY.
- G. ROLLUP STEEL SERVICE DOOR. BASIS-OF-DESIGN PRODUCT: MANUALLY OPERATED NON-INSULATED SERIES 620 ROLLING SERVICE DOOR MANUFACTURED BY THE OVERHEAD DOOR COMPANY WITH 18 GAGE F-265 SLATS WITH BAKED IN PRIME PAINT AND "POWERGUARD" PREMIUM POWDER COAT FINISH (COLOR SELECTED BY THE ARCHITECT). OPENING HEIGHT 7'-0". OPENING WIDTH 10'-0".

EXTERIOR GLAZING NOTES

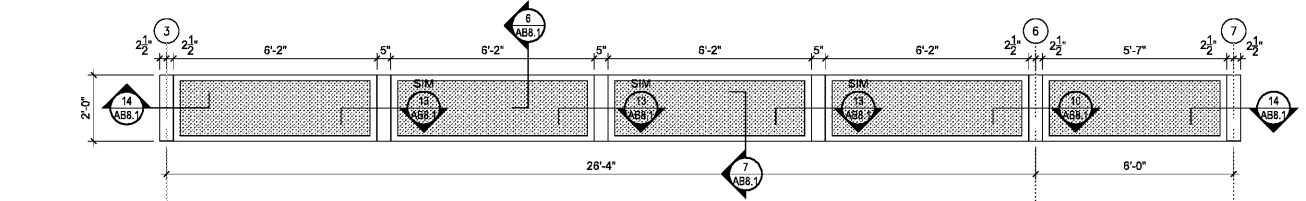
- A. GLAZING FOR ALL EXTERIOR ALUM STOREFRONTS AND EXTERIOR DOORS: PROVIDE TRANSPARENT COATED (LOW-E) INSULATING LAMINATED GLASS WITH THE FOLLOWING PERFORMANCE REQUIREMENTS:
 VISIBLE LIGHT TRANSMITTANCE: 43%
 EXTERIOR (VIS-OUT) REFLECTANCE: 17%
 WINTER U-VALUE: 0.29
 SUMMER U-VALUE: 0.28
 SOLAR HEAT GAIN COEFFICIENT: 0.23
 BASIS-OF-DESIGN: VIRACON VNE 29-83 INSULATING LAMINATED GLASS. PROVIDE WHITE OPAQUE INTERLAYER IN THE LOWER GLASS PANELS (FROM BOTTOM FRAME UP TO INTERMEDIATE HORIZONTAL FRAME AT 36 INCHES ABOVE FINISHED FLOOR) OF THE ALUM STOREFRONT SYSTEM.



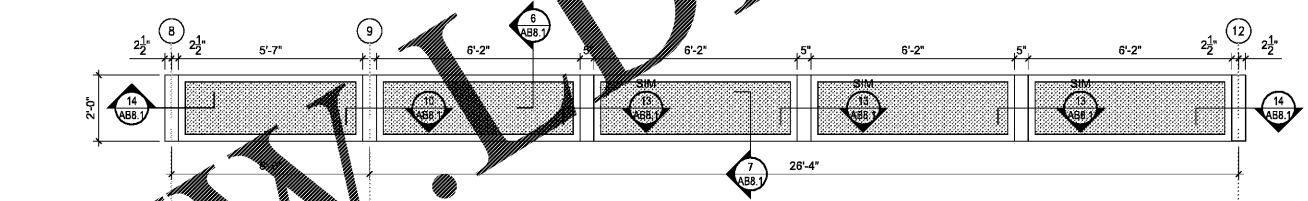
1 STOREFRONT ASSEMBLY A
SCALE: 3/8" = 1'-0"



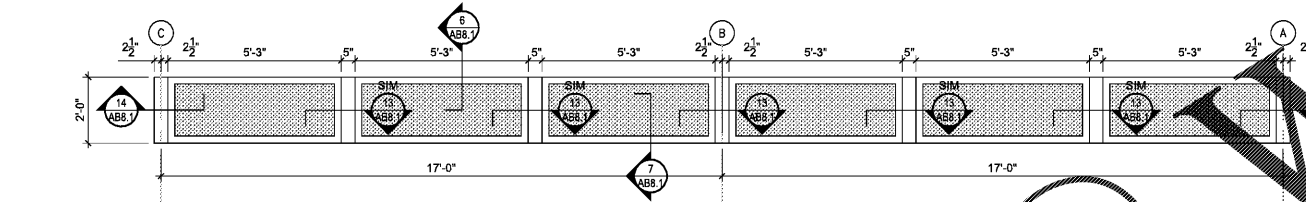
2 STOREFRONT ASSEMBLY B
SCALE: 3/8" = 1'-0"



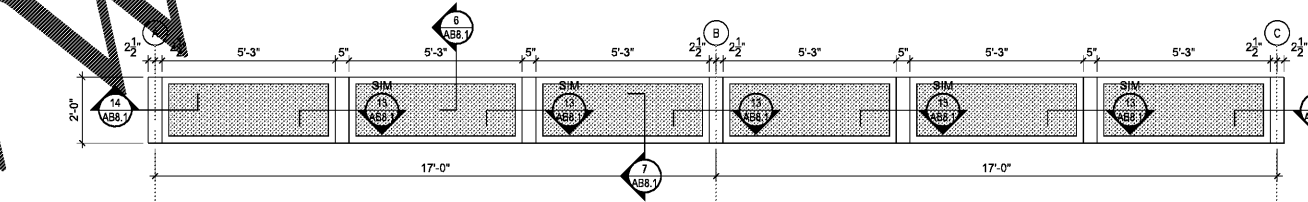
3 SCREEN ASSEMBLY C
SCALE: 3/8" = 1'-0"



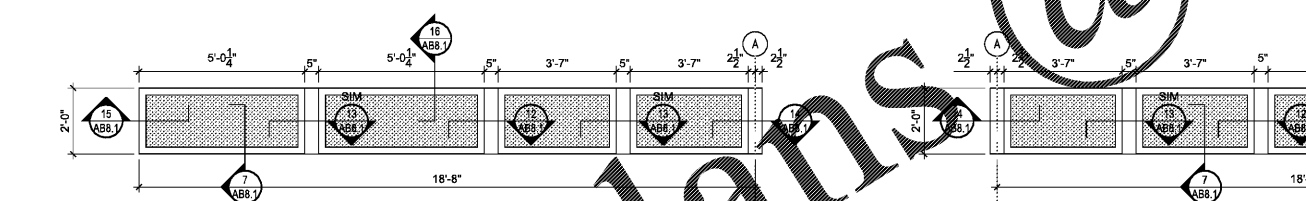
4 SCREEN ASSEMBLY D
SCALE: 3/8" = 1'-0"



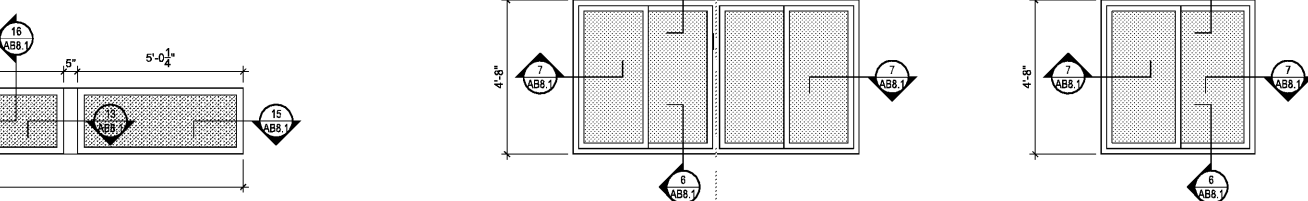
5 SCREEN ASSEMBLY E
SCALE: 3/8" = 1'-0"



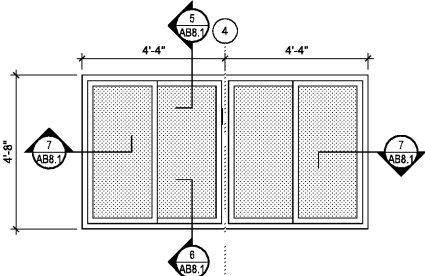
6 SCREEN ASSEMBLY F
SCALE: 3/8" = 1'-0"



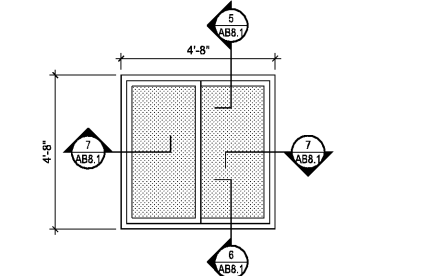
7 SCREEN ASSEMBLY G
SCALE: 3/8" = 1'-0"



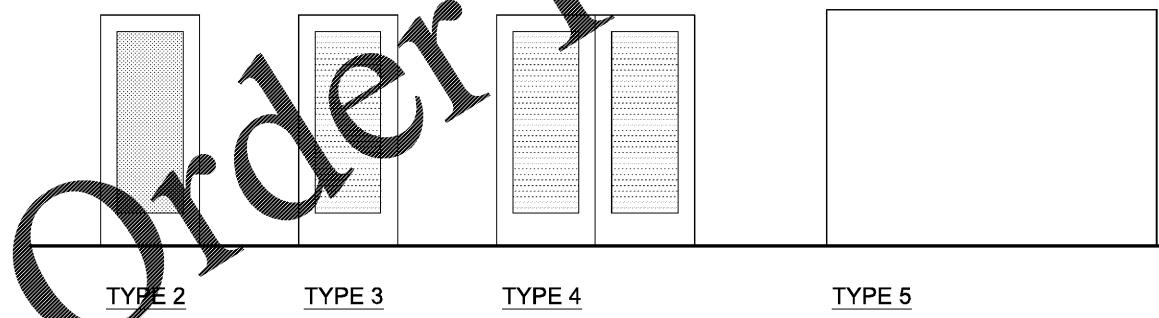
8 SCREEN ASSEMBLY H
SCALE: 3/8" = 1'-0"



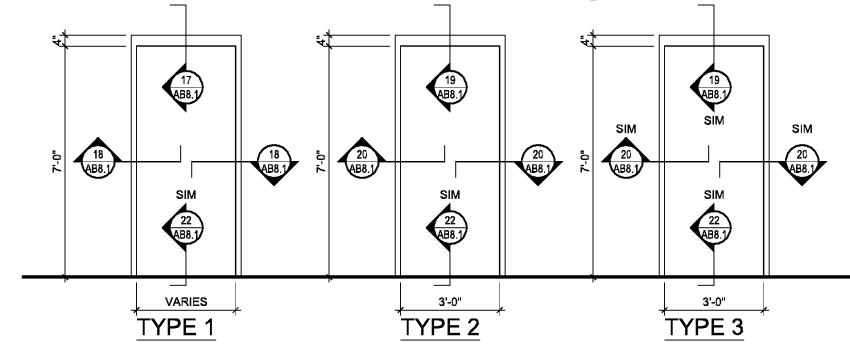
9 SLIDING WINDOW ASSEMBLY J
SCALE: 3/8" = 1'-0"



10 SLIDING WINDOW ASSEMBLY K
SCALE: 3/8" = 1'-0"



11 DOOR TYPES
SCALE: 3/8" = 1'-0"



12 DOOR FRAME TYPES
SCALE: 3/8" = 1'-0"

Order Plans @

WWW.DILine.com

Kimley-Horn

2201 West Royal Lane, Suite 275, Irving, Texas 75063
 PH: 972.440.8900
 FLORIDA REGISTERED PROFESSIONAL ENGINEERING FIRM LC-C000219
 FLORIDA REGISTERED LANDSCAPE ARCHITECTURE FIRM LC-C000219
 © 2017 KIMLEY-HORN AND ASSOCIATES, INC.

Jason Jensen
 2017.12.15
 16:11:59
 -05'00"

BUTLER PARK
 AQUATIC CENTER
 CITY OF NORTHPORT, FL

BATHHOUSE BUILDING
 OPENING ASSEMBLIES
 ELEVATIONS

Scale:	AS SHOWN
Designed by:	CD
Drawn by:	CD
Checked by:	JJ
Date:	DECEMBER 2017
Project No.:	48285014

SHEET
AB6.1