

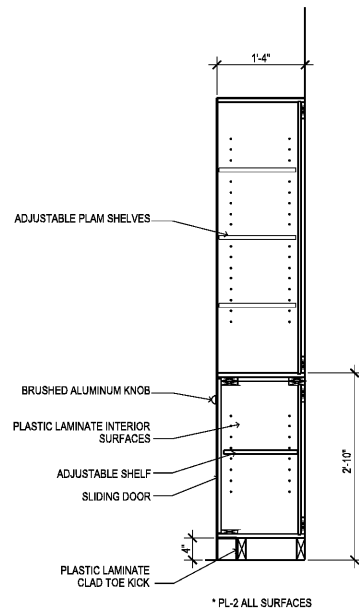
1 SECTION -CABINET
 SCALE: 3/4" = 1'-0"

2 SECTION -CABINET
 SCALE: 3/4" = 1'-0"

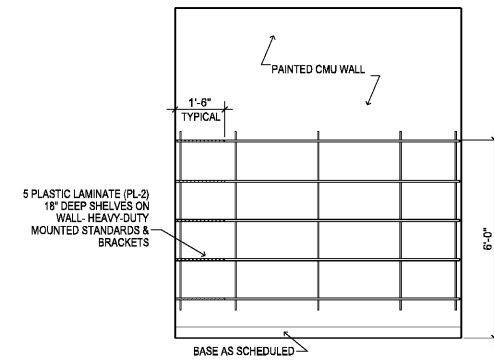
3 SECTION -CABINET
 SCALE: 3/4" = 1'-0"

4 SECTION -CABINET
 SCALE: 3/4" = 1'-0"

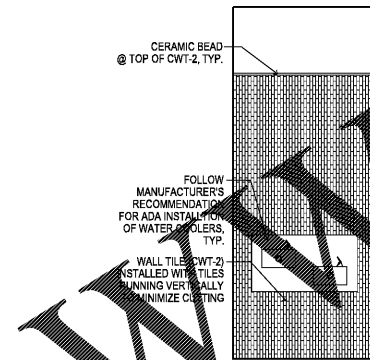
5 SECTION -CABINET
 SCALE: 3/4" = 1'-0"



7 ELEVATION - SUPPLY 102
 SCALE: 3/8" = 1'-0"

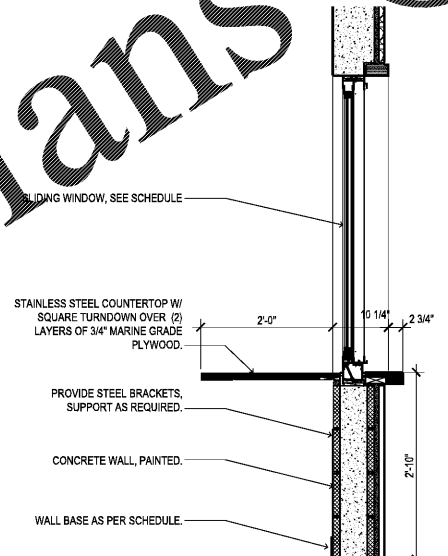


8 ELEVATION - WATER COOLER AT BREEZEWAY
 SCALE: 3/8" = 1'-0"



6 SECTION -CABINET
 SCALE: 3/4" = 1'-0"

9 SECTION -CABINET AT WINDOW
 SCALE: 3/4" = 1'-0"



MILLWORK STANDARDS

1. ALL DIMENSIONS TO BE VERIFIED IN FIELD. ANY/ALL DISCREPANCIES OF ANY KIND - WHETHER FOUND IN THE DRAWINGS, SPECIFICATIONS, OR AT THE JOBSITE - PLEASE NOTIFY ARCHITECT IMMEDIATELY. OTHERWISE, THE HIGHER QUALITY/COST ITEM/OPTION NOTED TAKES PRECEDENCE.
2. ALL MILLWORK CONSTRUCTION MUST FOLLOW AWI INDUSTRY STANDARDS IN CUSTOM GRADE, SPECIFIED FOR THE HIGHEST LEVEL OF QUALITY, MATERIALS, WORKMANSHIP AND INSTALLATION. TYPE "A" FRAMELESS CONSTRUCTION WITH FLUSH OVERLAY STYLE, REVEAL DIMENSION 1/8" UNLESS OTHERWISE NOTED.
3. ALL VERTICAL MILLWORK SURFACES, (INCLUDING DRAWER/CABINET FRONTS, ETC.) MUST BE CONSTRUCTED USING A HIGH DENSITY PARTICLE BOARD SUBSTRATE (ONLY). ALL HORIZONTAL MILLWORK SURFACES & COUNTERTOPS MUST BE CONSTRUCTED WITH AN EXTERIOR GRADE (3/4" THICK) PLYWOOD SUBSTRATE.
4. ALL EXPOSED MILLWORK SURFACES TO BE FINISHED AS INDICATED IN THE FINISH PLAN LEGEND/SCHEDULE INCLUDED IN THE DRAWINGS. ALL INTERIOR SURFACES TO BE WHITE MELAMINE, U.O.N.
5. ALL INTERIOR DOORS TO INCLUDE DOOR STOPS - SPEC: INOX BY UNISON HARDWARE (DSIX08-32) STAINLESS STEEL DOOR STOPS / 08 SATIN FINISH / INSTALL AT WALL WHEREVER POSSIBLE OTHERWISE INSTALL AT FLOOR.
6. ALL MILLWORK HARDWARE DOOR/DRAWER PULLS TO BE BAR PULLS - SPEC: 4-1/2" PULL (EXACT SPEC. T.B.D.) U.O.N.
7. ALL BASE CABINET TOE KICKS (EXPOSED SURFACES) TO BE 3/4" EXTERIOR GRADE PLYWOOD CONSTRUCTION, 4" HIGH (U.O.N.) & TO BE FINISHED TO MATCH THE BASE CABINET FINISH (AS PER PLANS) - TO MATCH BASE CABINET FACE FINISH, U.O.N.
8. PLUMBING ROUGH INS, ELECTRICAL CONNECTIONS AT ALL (APPROVED) EQUIPMENT MUST BE VERIFIED AS PER THE MANUFACTURER'S SPECIFICATIONS (PRIOR TO ANY FABRICATION AND/OR INSTALL).
9. ALL SPECIFIED FLOORING SHALL BE INSTALLED TO RUN BELOW ALL MILLWORK, ENTIRELY - TO EXTEND THE FULL LENGTH/DISTANCE TO THE WALL AND TO THE CENTERLINE OF ALL DOORS, U.O.N.
10. PROVIDE GROMMETS WITH CAPS AT MILLWORK LOCATIONS NOTED. ALL TO BE 2-1/2" DIAMETER; (EXACT LOCATIONS TO BE DETERMINED IN THE FIELD WITH CLIENT).
11. ALL MATERIAL FINISHES/SAMPLES AT MILLWORK (INCLUDING HARDWARE &/OR ALTERNATE FINISHES/MATERIAL OPTIONS) - MUST BE SUBMITTED FOR ARCHITECT'S APPROVAL - (PRIOR TO FABRICATION &/OR INSTALL).
12. MAINTAIN AN 18" MINIMUM CLEAR DIMENSION AT ALL MILLWORK LOCATED ADJACENT TO DOOR LOCATIONS, U.O.N.
13. VOC MATERIAL LIMITS: PROVIDE DOCUMENTATION INDICATING THAT PRODUCTS COMPLY WITH THE TESTING AND PRODUCT REQUIREMENTS OF THE CALIFORNIA DEPARTMENT OF HEALTH SERVICES' "STANDARD PRACTICE FOR THE TESTING OF VOLATILE ORGANIC EMISSIONS FROM VARIOUS SOURCES USING SMALL-SCALE ENVIRONMENTAL CHAMBERS."
14. VOC LIMITS FOR INSTALLATION ADHESIVES AND GLUES: USE INSTALLATION ADHESIVES THAT COMPLY WITH THE FOLLOWING LIMITS FOR VOC CONTENT WHEN CALCULATED ACCORDING TO 40 CFR 59, SUBPART D (EPA METHOD 24):
 1.) WOOD GLUES: 30 g/L. 2.) CONTACT ADHESIVE: 250 g/L.

Order Plans @

WWW.LDLINE.COM

Scale: AS SHOWN
 Designed by: CD
 Drawn by: CD
 Checked by: JJ
 Date: DECEMBER 2017
 Project No. 48285014

SHEET
 AB5.2

BATHHOUSE BUILDING
 INTERIOR ELEVATIONS

Jason Jensen
 2017.12.15
 16:11:21
 -05'00"

BUTLER PARK
 AQUATIC CENTER
 CITY OF NORTHPORT, FL

Kimley-Horn
 2201 West Royal Lane, Suite 275, Irving, Texas 75063
 PH: 972.261.8000
 FLORIDA REGISTERED PROFESSIONAL ENGINEERING FIRM
 FLORIDA REGISTERED LANDSCAPE ARCHITECTURE FIRM LC - C000219
 © 2017 KIMLEY-HORN AND ASSOCIATES, INC.