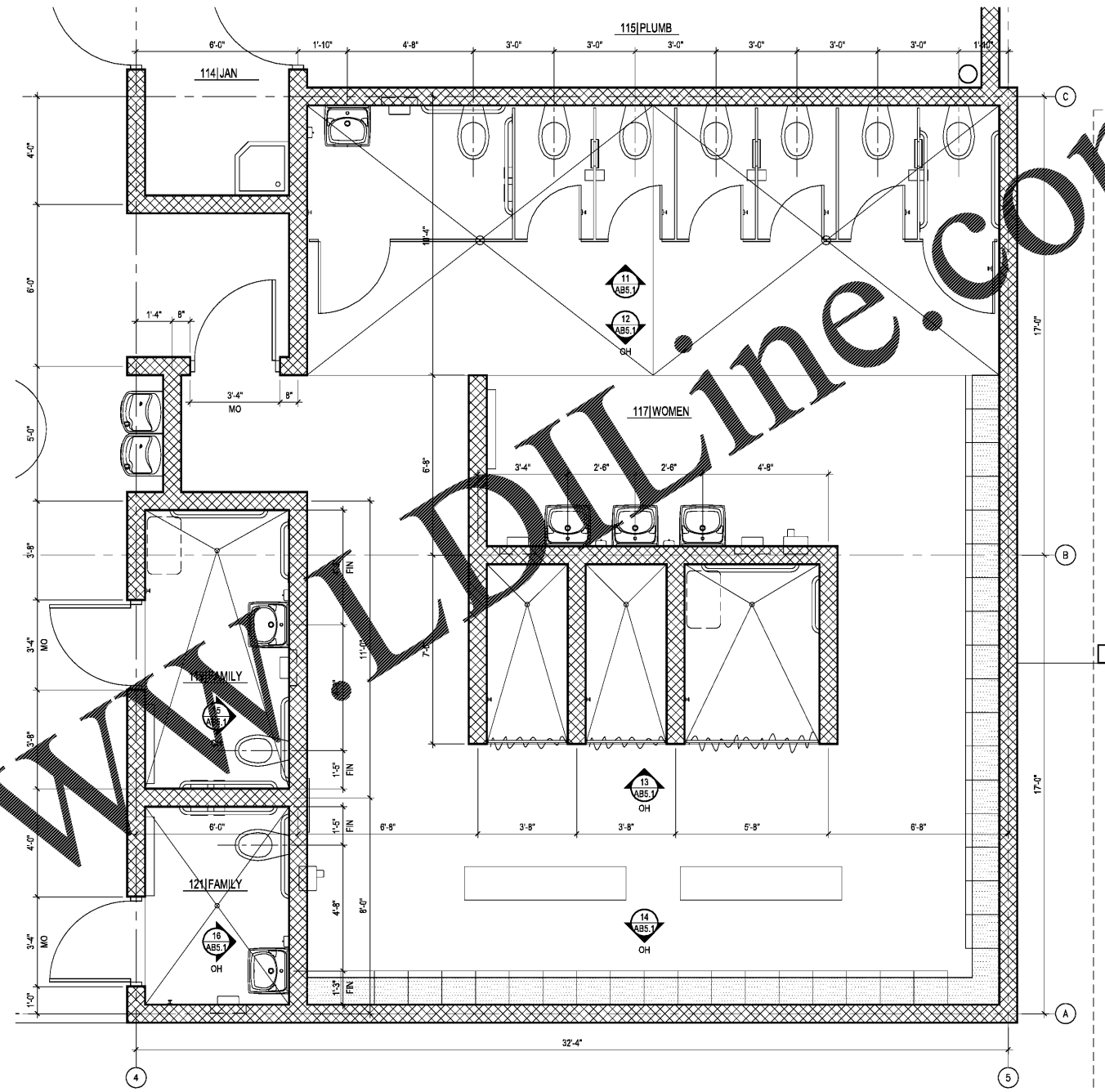


1 FLOOR PLAN - SOUTHWEST QUADRANT
SCALE: 3/8" = 1'-0"



2 FLOOR PLAN - SOUTHEAST QUADRANT
SCALE: 3/8" = 1'-0"

GENERAL NOTES

- PLAN DIMENSIONS INDICATING WALL LOCATIONS ARE TO CENTERLINE OF WALL CMU OR MO. TYP.
- INSTALL CORE-FILL FOAM INSULATION IN ALL CAVITIES OF ALL CMU WALLS THAT SEPARATE AIR CONDITIONED SPACES FROM NON-AIR CONDITIONED SPACES INCLUDING THE BUILDING EXTERIOR. DRILL INJECTION HOLES THROUGH THE NON-AIR CONDITIONED OR EXTERIOR FACE SIDE OF THE CMU WALLS RECEIVING INSULATION AND INJECT THE INSULATION INTO THE CMU CAVITIES PRIOR TO INSTALLING THE STONE AND STUCCO FINISHES ON THE EXTERIOR WALLS.
- SEE REFLECTED CEILING PLAN SHEET AB2.1 FOR LOCATIONS OF CONC MASONRY WALLS WITH T/O CMU @ EL. 12'-8" AND CONC MASONRY WALLS WITH T/O CMU @ EL. 9'-8".

DRAWING LEGEND

- mm/XXX** ROOM TAG. SEE FINISH SCHEDULE THIS SHEET.
- DOOR** DOOR TAG. SEE DOOR SCHEDULE THIS SHEET.
- X** WINDOW FRAME TAG. SEE WINDOW SCHEDULE THIS SHEET.
- n** DETAIL NUMBER
- XXX/n** ELEVATION OR SECTION CALL-OUT
- X** DETAIL SHEET
- (X)** SPECIFIC NOTE TAG

WALL LEGEND

- [Pattern]** CONC MASONRY WALL. SEE STRUCT. SEE GENERAL NOTES THIS SHEET.

SPECIFIC NOTES

- SLOPE TO CONC FLOOR TO DRAIN @ 1:50
- HI-LO DRINKING FOUNTAIN. SEE PLUMB.
- ROOF DRAIN LEADER. SEE PLUMB.
- LOCKERS ON CONC HOUSEKEEPING PAD
- BENCH BY LOCKER MANUFACTURER. SEE SPEC.

TOILET ACCESSORIES LEGEND

NAME	DESCRIPTION	BOBRICK USED AS BASIS OF DESIGN EXCEPT WHEN NOTED OTHERWISE
FD	FLOOR DRAIN. SEE PLUMBING DRAWINGS	N/A
GB36	36" GRAB BAR - B-5906.99 X 36, PEENED GRIP	33" AFF TO TOP
GB42	42" GRAB BAR - B-5906.99 X 42, PEENED GRIP	33" AFF TO TOP
GBS	SHOWER GRAB BAR. SEE PLUMBING DRAWINGS	33" AFF TO TOP
HD	SURFACE ELECTRIC HAND DRYER, MODEL XL-SB BY XLERATOR	64" AFF TO BOTTOM
HD1	SURFACE ELECTRIC HAND DRYER, MODEL XL-SB BY XLERATOR	36" AFF TO BOTTOM
HD2	RECESSED ELECTRIC HAND DRYER, MODEL RH76-C BY EXCEL	SEE MANUFACT.'S RECOMMEND.
MIR	MIRROR, 18"W X 36"H, B-165	SEE INTERIOR ELEV.
MIR1	MIRROR, 2'-0"W X 5'-0"H, B-290	12" AFF TO BOTTOM
SU	SOAP DISPENSER, OWNER BOUGHT & CONTRACTOR INSTALLED	48" AFF TO BOTTOM
TPD	TOILET TISSUE DISPENSER, OWNER BOUGHT & CONTRACTOR INSTALLED	24" AFF TO C
SND	SANITARY NAPKIN DISPOSAL UNIT, PARTITION-MOUNTED, B-4354	34" AFF TO TOP
SND1	SANITARY NAPKIN DISPOSAL UNIT, SURFACE-MOUNTED, B-270	34" AFF TO TOP
SS	FOLDING SHOWER SEAT B-6191	18" AFF TO TOP
SC	STAINLESS STEEL SHOWER CURTAIN, ROD & HOOKS B-207, 204-2, & 204-1	82" AFF TO TOP
HK	ROBE HOOK B-6717	48" AFF TO TOP
MH	MOP & BROOM HOLDER, B-239 & SHELF B-296	60" AFF TO C
DCT	DIAPER CHANGING STATION, SURFACE, KB110-SSWM BY KOALA	SEE MANUFACT.'S RECOMMEND.
PTD	PAPER TOWEL DISPENSER, OWNER BOUGHT & CONTRACTOR INSTALLED	INSTALL AS CLOSE TO BACKSPLASH AS POSSIBLE WHILE LEAVING SUFFICIENT PAPER TOWEL ACCESS

*FINAL HAND DRYER ELECTRICAL REQUIREMENTS (BREAKER SIZE) MUST BE COORDINATED BY THE GENERAL CONTRACTOR WITH THE ELECTRICAL CONTRACTOR AND ELECTRICAL ENGINEER BEFORE ORDERED AND INSTALLED. NOTE THAT THE HAND DRYER ELECTRICAL SPECIFICATIONS AS STATED IN THE ELECTRICAL DRAWINGS MAY NOT MATCH THE ACTUAL HAND DRYER ELECTRICAL SPECIFICATIONS IN THE CONSTRUCTION SUBMITTAL. FOR ALL PLUMBING FIXTURES MODELS PLEASE REFER TO PLUMBING SHEETS PB-F5.0.

Order Plans

WWW.LDLINE.COM

Kimley-Horn
2201 West Royal Lane, Suite 275, Irving, Texas 75063
PH: 972.440.0000
FLORIDA REGISTERED ENGINEERING FIRM NO. 894
FLORIDA REGISTERED LANDSCAPE ARCHITECTURE FIRM LC-C000219
© 2017 KIMLEY-HORN AND ASSOCIATES, INC.

Jason Jensen
2017.12.15
16:09:54
-05'00"



**BUTLER PARK
AQUATIC CENTER**
CITY OF NORTHPORT, FL

**BATHHOUSE BUILDING
ENLARGED FLOOR PLANS**

Scale: AS SHOWN
Designed by: CD
Drawn by: CD
Checked by: JJ
Date: DECEMBER 2017
Project No. 48285014

SHEET
AB4.2