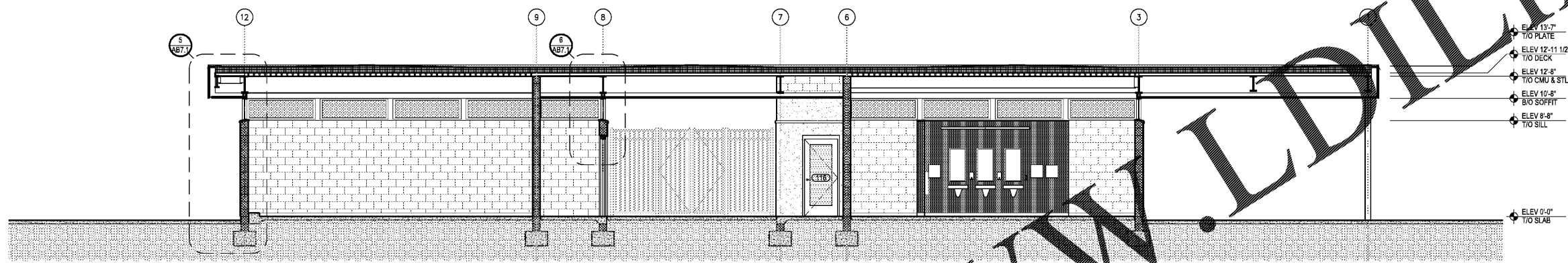
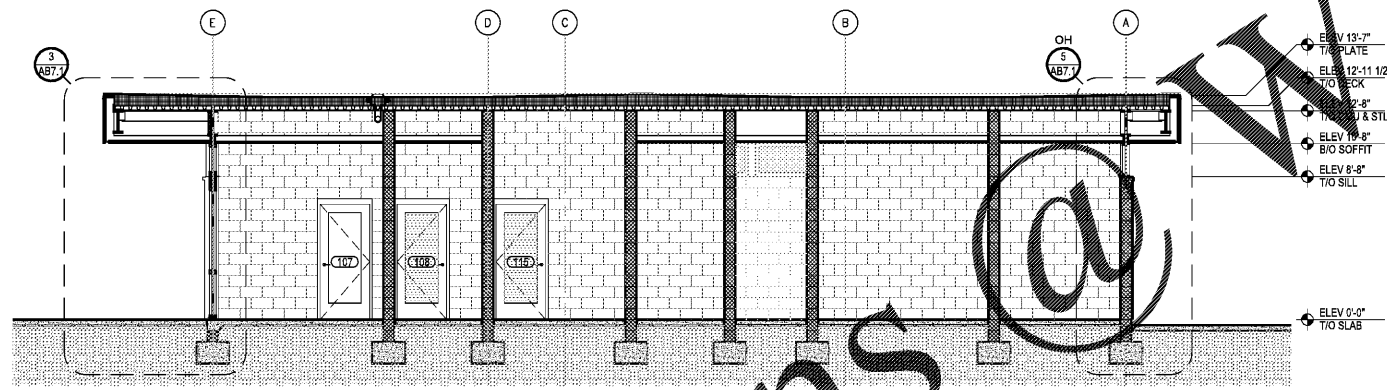


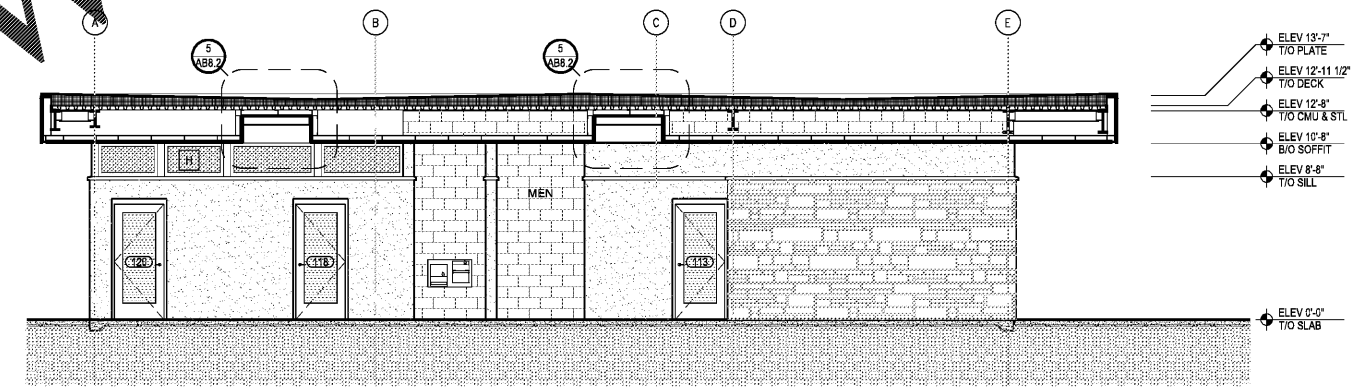
1 SECTION LOOKING NORTHWEST
SCALE: 3/16" = 1'-0"



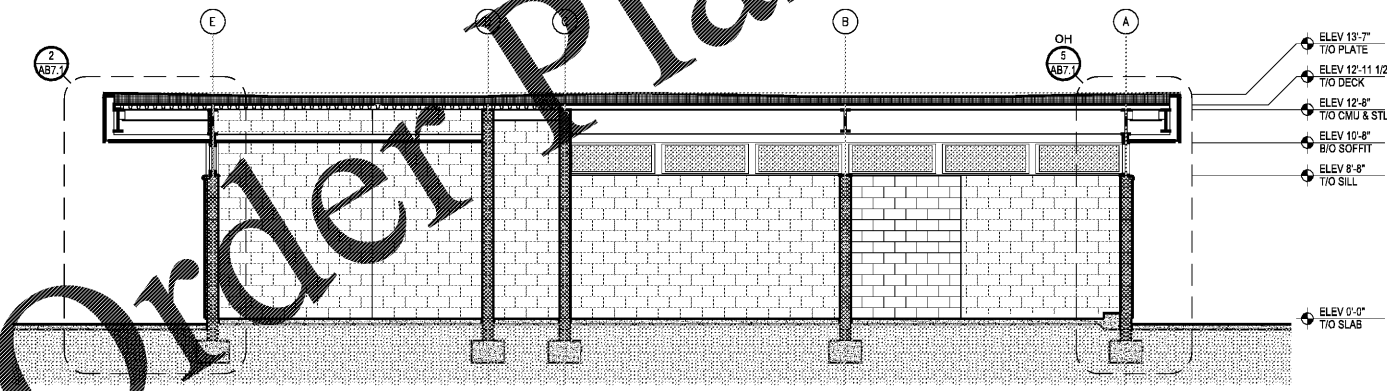
2 SECTION LOOKING NORTHWEST
SCALE: 3/16" = 1'-0"



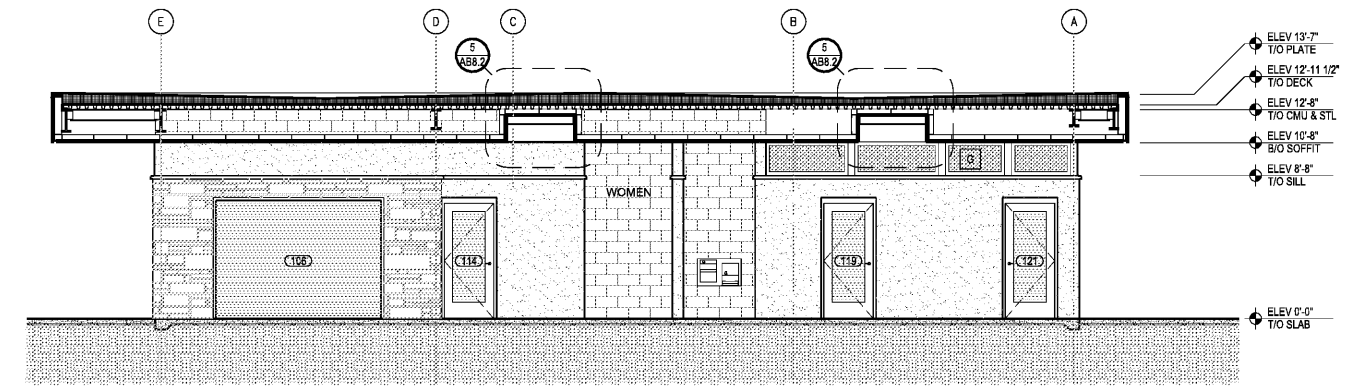
3 SECTION LOOKING SOUTHEAST
SCALE: 3/16" = 1'-0"



5 SECTION LOOKING NORTHWEST
SCALE: 3/16" = 1'-0"



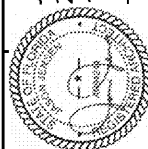
4 SECTION LOOKING SOUTHEAST
SCALE: 3/16" = 1'-0"



6 SECTION LOOKING SOUTHEAST
SCALE: 3/16" = 1'-0"

Order plans @

www.LDLine.com

	<p>Kimley-Horn</p> <p>2201 West Royal Lane, Suite 275, Irving, Texas 75063 PH: 972.440.0000 FAX: 972.440.0001 FLORIDA REGISTERED ENGINEERING FIRM No. 894 FLORIDA REGISTERED LANDSCAPE ARCHITECTURE FIRM LC-C000219 © 2017 KIMLEY-HORN AND ASSOCIATES, INC.</p>
<p>Jason Jensen 2017.12.15 16:08:31 -05'00"</p>	<p>BUTLER PARK AQUATIC CENTER CITY OF NORTHPORT, FL</p>
<p>BATHHOUSE BUILDING SECTIONS</p>	
<p>Scale: AS SHOWN Designed by: CD Drawn by: CD Checked by: JJ Date: DECEMBER 2017 Project No. 48285014</p>	
<p>SHEET AB3.2</p>	