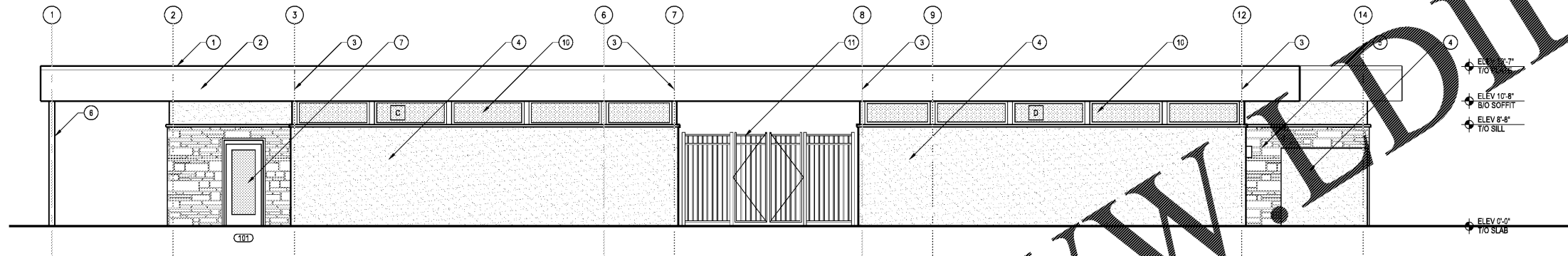
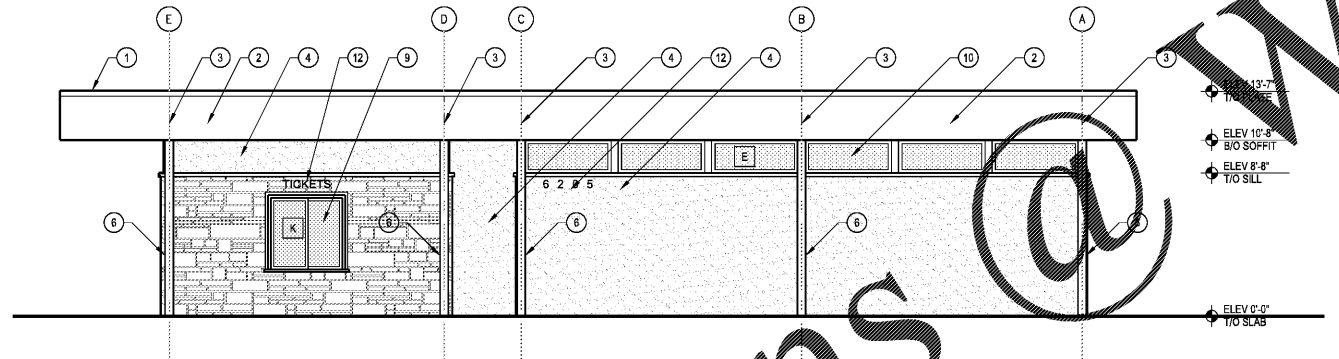


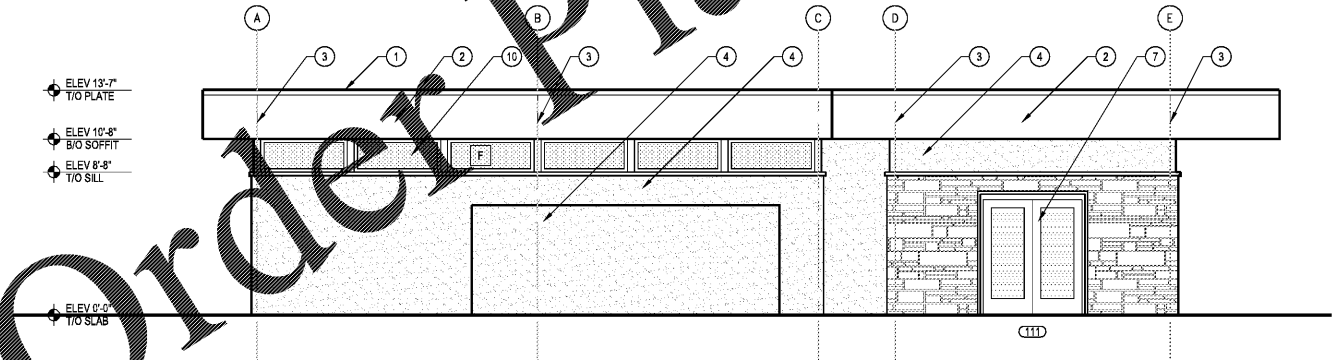
1 NORTHEAST ELEVATION
SCALE: 3/16" = 1'-0"
0 5 10 FEET



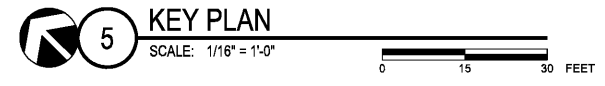
2 SOUTHWEST ELEVATION
SCALE: 3/16" = 1'-0"
0 5 10 FEET



3 NORTHWEST ELEVATION
SCALE: 3/16" = 1'-0"
0 5 10 FEET



4 SOUTHEAST ELEVATION
SCALE: 3/16" = 1'-0"
0 5 10 FEET



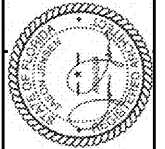
5 KEY PLAN
SCALE: 1/16" = 1'-0"
0 15 30 FEET

- SPECIFIC NOTES**
- 1 METAL COPING, PREFINISHED.
 - 2 STUCCO ON SHEATHING, PAINT FINISH.
 - 3 STUCCO CONTROL JOINT REGLET.
 - 4 STUCCO ON CONC MASONRY, PAINT FINISH.
 - 5 STONE VENEER ON CONC MASONRY, SEE SPEC.
 - 6 STEEL COLUMN, SEE STRUCT. PAINT FINISH.
 - 7 ALUM DOOR AND FRAME ASSEMBLY, SEE +NOTE A THIS SHEET.
 - 8 ALUM STOREFRONT FRAME & GLAZING ASSEMBLY, SEE +NOTE B THIS SHEET.
 - 9 ALUM SLIDING WINDOW ASSEMBLY, SEE +NOTE C THIS SHEET.
 - 10 STAINLESS STEEL SCREEN ASSEMBLY, SEE +NOTE D THIS SHEET.
 - 11 METAL FENESTRATION.
 - 12 ALUM DIMENSIONAL SIGNAGE CHARACTERS, PIN MOUNTED, SEE SPEC.
 - 13 ELECTRICAL LOCK, 24-INCH DIA, SEE ELEC.

- +NOTES**
- A. ALUM DOOR AND FRAME ASSEMBLY, BASIS-OF-DESIGN PRODUCT, MODEL 1006E FLUSH ALUM DOOR WITH ALUM FRAME MANUFACTURED BY CLINE ALUMINUM DOORS, INC. SEE SPEC.
 - B. ALUM STOREFRONT FRAME AND GLAZING ASSEMBLY, BASIS-OF-DESIGN PRODUCT, SERIES IR-501 MANUFACTURED BY THE KAWNEER COMPANY, INC. SEE SPEC.
 - C. ALUM SLIDING WINDOW ASSEMBLY, BASIS-OF-DESIGN PRODUCT, SERIES TR-6800 MANUFACTURED BY TRACO WINDOWS AND DOORS, INC. SEE SPEC.
 - D. STAINLESS STEEL SCREEN ASSEMBLY, BASIS-OF-DESIGN PRODUCT, PATIO ENCLOSURE SCREEN IN ALUM FRAME MANUFACTURED BY CRIMSPE NORTH AMERICA. SCREEN: 304 HIGH TENSILE STAINLESS STEEL GRADE MESH WITH 0.035 INCH STRANDS AT 3/5 STRANDS PER SQUARE INCH. ATTACH MESH TO ALUM FRAME BY A REMOVABLE ALUM CLAMP WITH TAMPER RESISTANT SECURITY HEAD SCREWS.

Kimley-Horn
2201 West Royal Lane, Suite 275, Irving, Texas 75063
PH: 972.440.9600
FLORIDA REGISTERED ENGINEERING FIRM #99
FLORIDA REGISTERED LANDSCAPE ARCHITECTURE FIRM LC-C000219
© 2017 KIMLEY-HORN AND ASSOCIATES, INC.

Jason Jensen
2017.12.15
16:07:39
-05'00"



BUTLER PARK
AQUATIC CENTER
CITY OF NORTHPORT, FL

BATHHOUSE BUILDING
EXTERIOR ELEVATIONS

Scale: AS SHOWN
Designed by: CD
Drawn by: CD
Checked by: JJ
Date: DECEMBER 2017
Project No. 48285014

SHEET
AB3.1

Order Plans @ www.dlLine.com