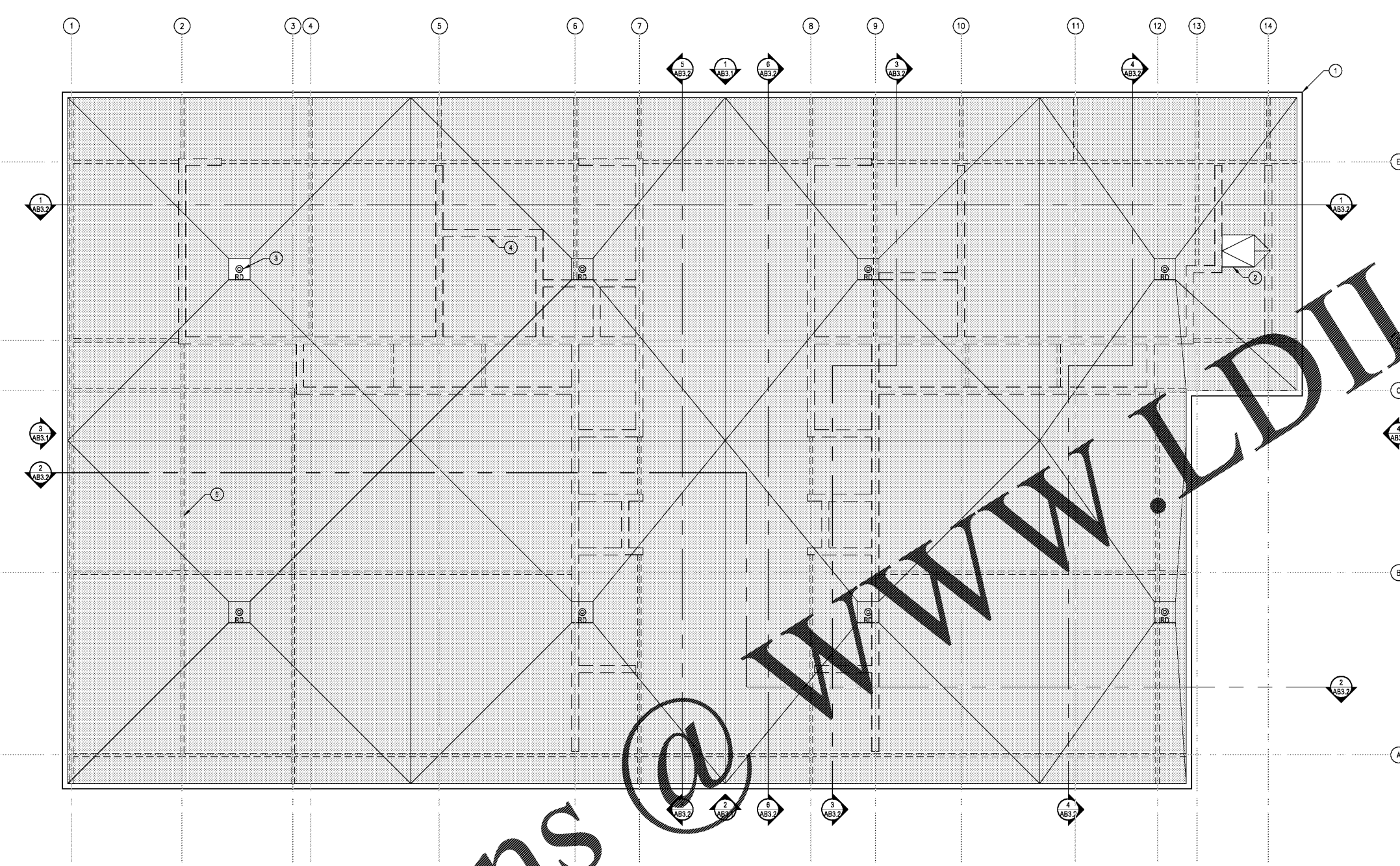


Order Plans

1 ROOF PLAN
SCALE: 3/16" = 1'-0"
0 5 10 FEET



SPECIFIC NOTES

- 1 ROOF EDGE
- 2 ROOF HATCH. SEE NOTE E BELOW.
- 3 ROOF DRAIN. TYP. SEE PLUMB.
- 4 TO CONC MASONRY WALL EL. 12'-8" BELOW. TYP.
- 5 ROOF DECK FRAMING BELOW. SEE STRUCT.

ROOFING SYSTEM NOTES

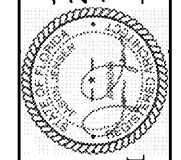
- A. BASIS-OF-DESIGN: 80-MIL SURF. FIELD EXTRA (INCLUDING HS) WHITE TPO MEMBRANE ON 1/2" SINGL. GLASS FIBER COVER BOARD ON TAPERED RIGID INSULATION. SLOPE DOWN 1/8" (1/4-INCH PER FOOT)
- B. PROVIDE A FLORIDA PROFESSIONAL APPROVAL (FJ) DOCUMENT ISSUED BY THE FLORIDA DEPARTMENT OF BUSINESS & PROFESSIONAL REGULATION OR A MIAMI-DADE NOTICE OF ADOPTION OF A DOCUMENT ISSUED BY THE MIAMI-DADE COUNTY GOVERNMENT CERTIFYING THAT THE ROOFING SYSTEM AND MATERIALS SELECTED FOR THIS PROJECT ARE CURRENTLY APPROVED FOR BUILDINGS AT PROJECT LOCATION BY THE AUTHORITY HAVING JURISDICTION. INSTALL EACH ASSEMBLY PER THE MANUFACTURER'S INSTRUCTIONS AND THE INSTALLATION INSTRUCTIONS PROVIDED ON THE FL OR NOA DOCUMENTS.
- C. PROVIDE ALL MATERIALS REQUIRED TO PROPERLY INSTALL THOSE MATERIALS AS A SYSTEM TO THE SUBSTRATES AND THE ROOFING ACCESSORIES PROVIDED PER THE ROOFING SYSTEM MANUFACTURER'S INSTRUCTIONS AND REQUIREMENTS. ENGAGE THE MANUFACTURER OF THE SELECTED ROOFING SYSTEM TO PROVIDE ON-SITE INSPECTIONS, AT THEIR RECOMMENDED STAGES OF THE INSTALLATION, AND COMPLY WITH THE MANUFACTURER'S DIRECTIONS BASED ON THOSE INSPECTIONS.
- D. PROVIDE AND INSTALL THE ROOFING SYSTEM MATERIALS TO COMPLY WITH THE MANUFACTURER'S WARRANTY REQUIREMENTS.
- E. ROOF HATCH BASIS-OF-DESIGN: SERIES SING STEEL ROOF HATCH MANUFACTURED BY THE BILCO COMPANY.

Scale:	AS SHOWN
Designed by:	CD
Drawn by:	CD
Checked by:	JJ
Date:	DECEMBER 2017
Project No.:	48285014

SHEET
AB1.2

**BATHHOUSE BUILDING
ROOF PLAN**

**BUTLER PARK
AQUATIC CENTER
CITY OF NORTHPORT, FL**



Jason Jensen
2017.12.15
16:02:32
-05'00"

Kimley-Horn
2201 West Royal Lane, Suite 275, Irving, Texas 75063
PH: 972.261.9900
FLORIDA REGISTERED ENGINEERING FIRM #89
FLORIDA REGISTERED LANDSCAPE ARCHITECTURE FIRM LC-C000219
© 2017 KIMLEY-HORN AND ASSOCIATES, INC.