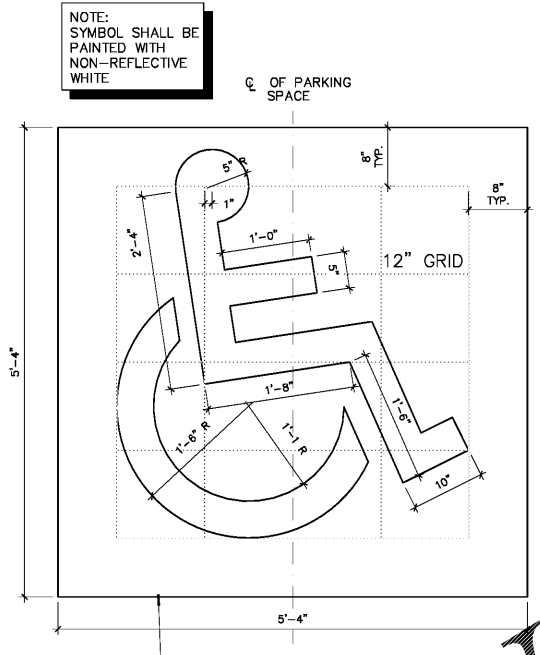


1 ACCESSIBLE PARKING LAYOUT
SCALE: 1"=10'-0"



2 HANDICAP SYMBOL
1" = 1'-0"

NOTE:
ALL SIGN HARDWARE TO BE GALVANIZED

COLORS:
SIGN N° R7-8:
LEGEND & BORDER - BLACK
BACKGROUND - WHITE
WHITE SYMBOL ON BLUE BACKGROUND

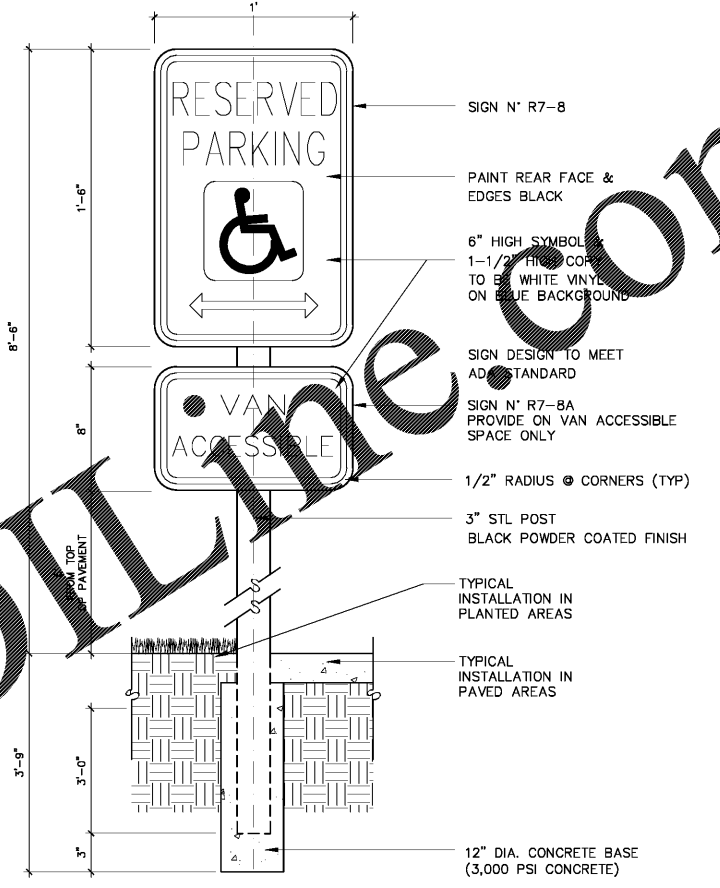
SIGN N° R7-8A: VAN ACCESSIBLE
LEGEND & BORDER - BLACK
BACKGROUND - WHITE

SIGN MOUNTING:
HEIGHT: 6'-0" TO BOTTOM OF SIGN

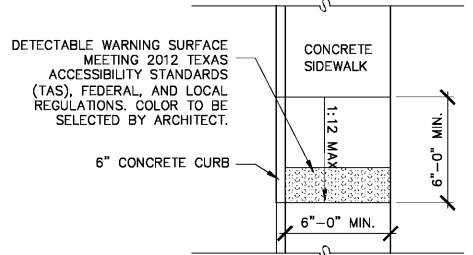
USE SINGLE AND/OR DOUBLE HEADED ARROWS, MAY BE USED ON SIGNS TO MARK MULTIPLE RESERVED PARKING SPACES. ARROW SHOULD BE OMITTED WHEN SIGN IS TO BE USED TO MARK A SINGLE SPACE. FURNISH AND INSTALL SIGN(S) PER DETAIL. LOCATE AS DIRECTED.

NOTE:
SIGNAGE AND MARKINGS TO BE IN ACCORDANCE WITH FEDERAL, STATE AND LOCAL REGULATIONS. PREPARE SURFACE PER STATE OF FLORIDA REQUIREMENTS.

NOTE:
MAXIMUM SLOPE FOR ALL PATHS 5%; MAX CROSS SLOPE IS 2% FOR THE FIRST FEET FROM THE DOOR A 2% SLOPE (MAX) MUST BE MAINTAINED.



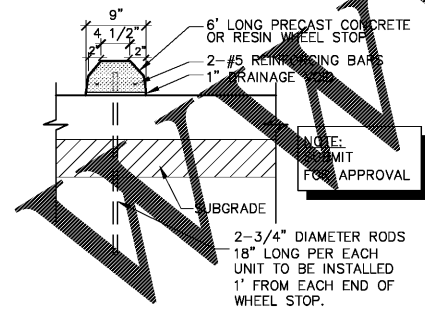
3 "HANDICAPPED PARKING" SIGN (PROVIDE 5)
N.T.S.



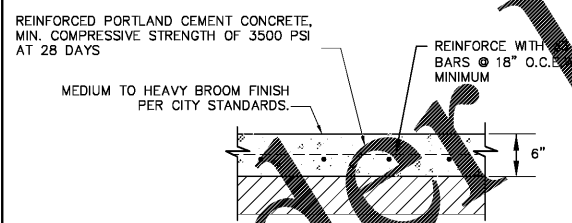
4 ACCESS RAMP TYPE 1
SCALE: 1"=5'-0"

NOTES:

1. CONCRETE SHALL HAVE A MINIMUM COMPRESSIVE STRENGTH OF 3000 PSI
2. REINFORCEMENT SHALL BE #3 BARS ON 18" CENTERS.
3. 18" x 3/4" ASPHALT COATED DOWELS WITH 5" x 13/16" DOWEL SLEEVE SHALL BE INSTALLED ON 24" CENTERS, ALONG WITH SYNTHETIC EXPANSION BOARD AND SEALING COMPOUND AS PER DOWELED EXPANSION JOINT DETAIL.



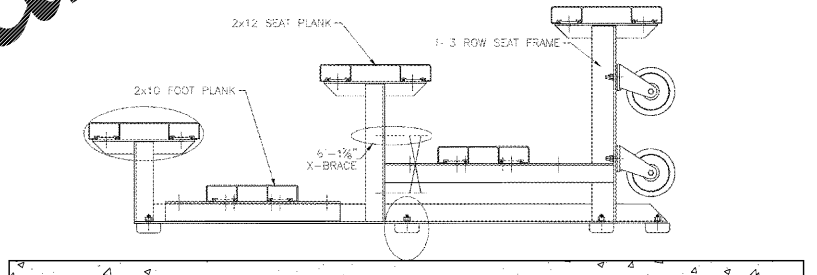
5 PRECAST CONCRETE WHEEL STOP
N.T.S.



NOTES:

1. REFER TO TECHNICAL ENGINEERING REPORT PREPARED BY ARDMAN & ASSOCIATES, INC. SEPTEMBER 2011 (REPORT NUMBER 11-7175) FOR SUBGRADE AND PAVING RECOMMENDATIONS.

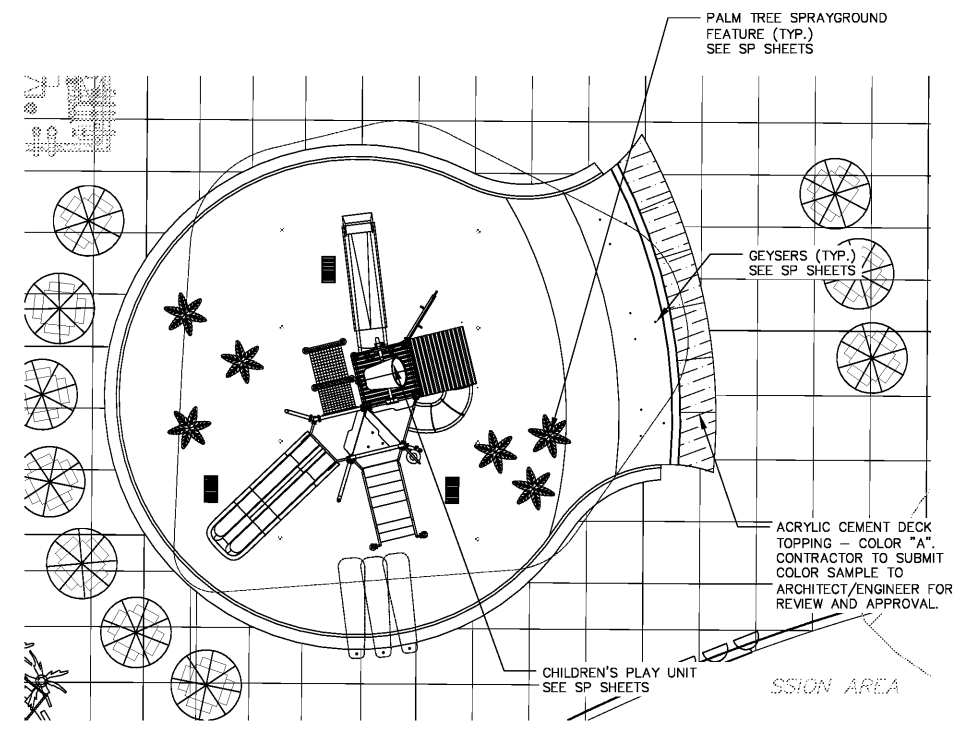
6 6" CONCRETE PAVING SECTION
SCALE: NTS



NOTES:

THE PARK AND FACILITIES CATALOG
3350 SW BOCO RATON BLVD. SUITE B2,
BOCO RATON, FL 33431
1-866-280-9894
MODEL: 5699-1218-7.5

7 BLEACHER DETAIL (PROVIDE 4)
NTS



8 CHILDREN'S POOL FEATURE LAYOUT
1" = 10'-0"

Kimley-Horn

2201 West Royal Lane, Suite 275, Irving, Texas 75063
PH: 972.420.8800
FLORIDA REGISTERED ENGINEERING FIRM BR 00000000
FLORIDA REGISTERED LANDSCAPE ARCHITECTURE FIRM LC-C000219
2017 KIMLEY-HORN AND ASSOCIATES, INC.

PETER T. VAN BUSKICK
PROFESSIONAL ENGINEER
LICENSE NO. 388959
THIS ITEM HAS BEEN
ELECTRONICALLY
SIGNED AND SEALED BY PETER
T. VAN BUSKICK, P.E.
USING A SA-19
AUTHENTICATION CODE.

**BUTLER PARK
AQUATIC CENTER
CITY OF NORTHPORT, FL**

SITE DETAILS - 4

Scale: AS SHOWN
Designed by: MCH
Drawn by: KWS
Checked by: DP
Date: DECEMBER 2017
Project No. 48285014

SHEET
C-12