

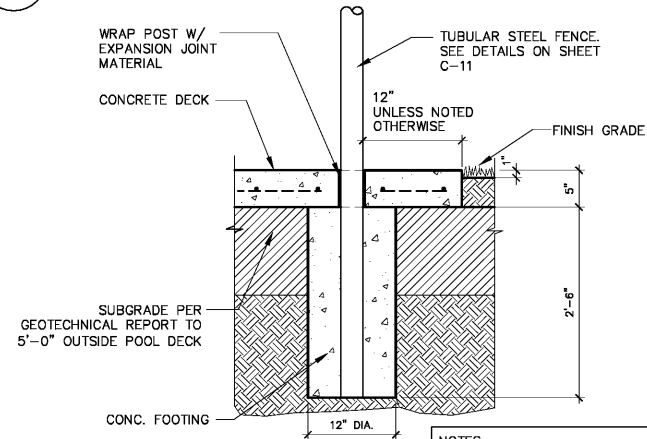
- 1 SLAB FINISH: SLIP RESISTANT DRY BRUSH FINISH. PROVIDE 4"x4" SAMPLE FOR APPROVAL BY ARCHITECT/ENGINEER FOR DRY BRUSH CONCRETE PAVING
- 2 #3 REBAR @ 18" O.C. BOTH WAYS, 2" MIN. CLEAR TO SLAB SURFACE AND SIDES.
- 3 1/2" RADIUS SMOOTH TROWELED EDGE (TYPICAL).
- 4 FINISH SODDED, OR MULCHED BED GRADE @ 1" BELOW PAVEMENT.
- 5 SUBGRADE PER GEOTECHNICAL REPORT RECOMMENDATIONS. COMPACT TO 95% OF MODIFIED PROCTOR MAXIMUM DENSITY TO AT LEAST 1'-0" BELOW THE SUBGRADE ELEVATION

**NOTES:**

1. REFER TO PLAN (SHEET C-5) FOR EXPANSION & SCORE JOINT LOCATIONS.
2. REFER TO GEOTECHNICAL ENGINEERING REPORT PREPARED ARDAMAN & ASSOCIATES, INC IN SEPTEMBER 2011 (REPORT NUMBER 11-7173) FOR SUBGRADE AND PAVING RECOMMENDATIONS.

**1 5" CONCRETE PAVING (POOL DECK)**

SCALE: 1"=1'-0"

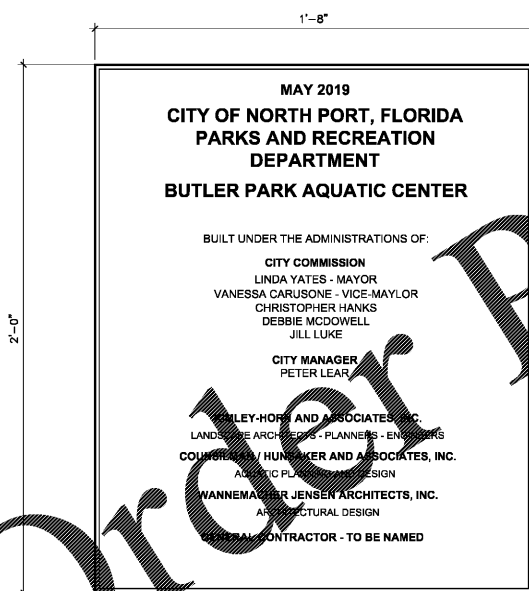


**NOTES:**

1. REFER TO GEOTECHNICAL ENGINEERING REPORT PREPARED ARDAMAN & ASSOCIATES, INC IN SEPTEMBER 2011 (REPORT NUMBER 11-7173) FOR SUBGRADE AND PAVING RECOMMENDATIONS.

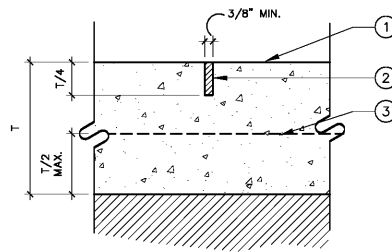
**4 TYP. FENCE SECTION AT POOL DECK**

N.T.S.



**6 CAST ALUMINUM PLAQUE (PROVIDE ONE)**

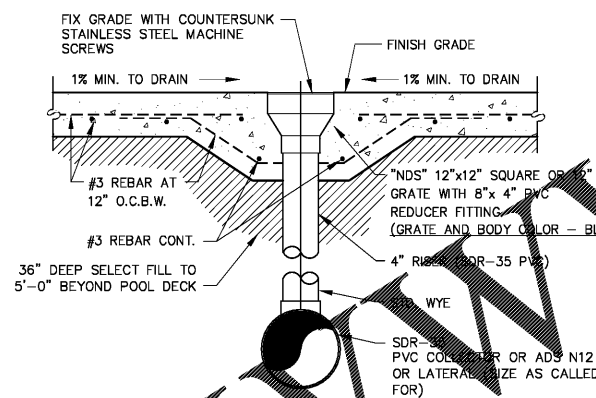
N.T.S.



- 1 CONCRETE FINISH: REFER TO DETAIL 1, THIS SHEET.
- 2 SAWCUT JOINT FILLED W/ SYNTHETIC JOINT SEALER (CHLORINE RESISTANT) COMPOUND TO W/ IN 1/4" OF FINISH SURFACE.
- 3 PAVING REINF.: REFER TO DETAIL 1, THIS SHEET.

**2 CONTROL JOINT - SAW CUT**

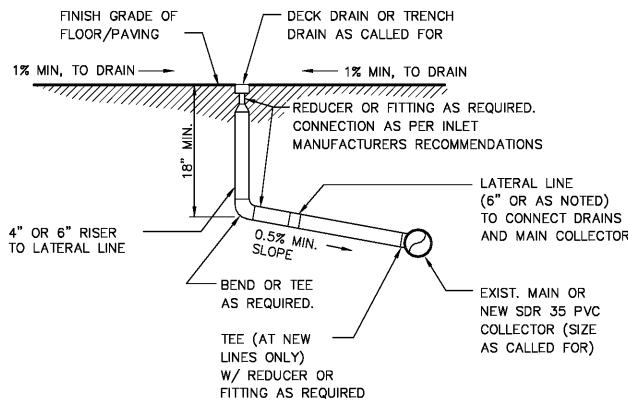
SCALE: 3"=1'-0"



**NOTE:**  
1. DO NOT USE FLEXIBLE PIPING FOR DECK DRAINAGE OR POOL PIPING.

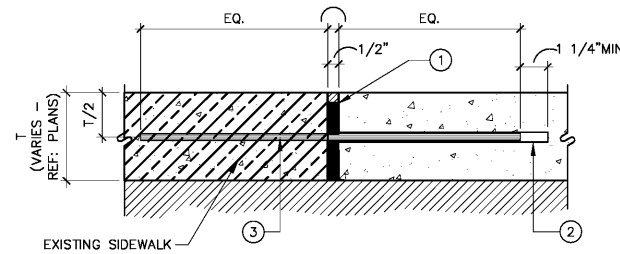
**5 DECK DRAIN DETAIL (TYP.)**

N.T.S.



**7 DETAIL - INLET CONNECTION (TYP.)**

N.T.S.



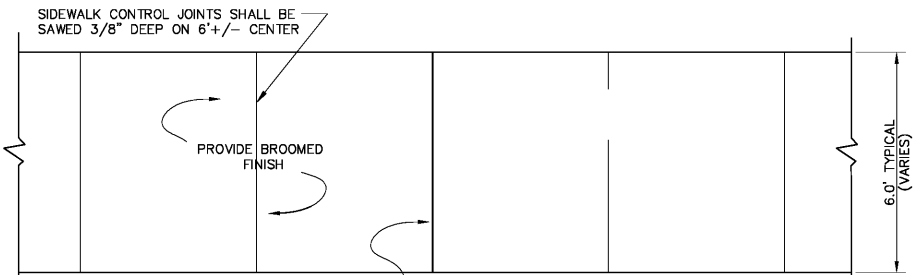
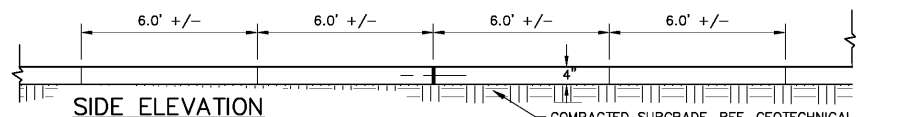
- 1 JOINT FILLER W/ ZIP STRIP BLACK SYNTHETIC FIBER EXPANSION JOINT MATERIAL. SUBMIT COLOR TO OWNER FOR APPROVAL
- 2 CLOSED END SLEEVE W/ 1/4" MIN. CLEARANCE TO JOINT. FIT & SECURE TO JOINT.
- 3 #4 NO. 4 SMOOTH STEEL DOWEL. SPACING EQ. TO SLAB REBAR. WRAP ONE END FOR EXPANSION AS SHOWN. (NO DOWELS AT BUILDINGS OR BACK OF CURBS)

**NOTE:**  
ELECTRICAL BONDING MUST BE CONTINUOUS THROUGH EXPANSION JOINTS.

**3 DOWELED EXPANSION JOINT**

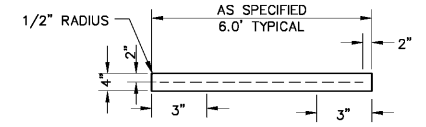
SCALE: 1"=1'-0"

- NOTES:**
1. CONCRETE SHALL HAVE A MINIMUM COMPRESSIVE STRENGTH OF 3000 PSI
  2. REINFORCEMENT SHALL BE #3 BARS ON 18" CENTERS.
  3. 1/2" x 3/4" ASPHALT COATED DOWELS WITH 5" x 13/16" DOWEL SLEEVE SHALL BE INSTALLED ON 24" CENTERS, ALONG WITH BLACK SYNTHETIC FIBER EXPANSION JOINT MATERIAL AS PER DOWELED EXPANSION JOINT DETAIL.
  4. WHEELCHAIR RAMP WILL BE CONSTRUCTED ON COMPACTED SUBGRADE.



CONCRETE TO BE MIN. 3000 P.S.I. NO. 3 BARS 18" O.C. EACH WAY

**PLAN**  
EXPANSION JOINT FILLER W/ ZIPSTRIP AND 1" SEALER (GRAY) ABOVE (SUBMIT COLOR AND MATERIAL TO ARCHITECT/ENGINEER FOR APPROVAL) WALK SHALL BE 6'-0" MIN. WHEN NEXT TO CURB



**8 4" CONCRETE SIDEWALK**

N.T.S.

**Kinley-Horn**  
2201 West Royal Lane, Suite 275, Irving, Texas 75063  
Phone: 972-421-4200  
FLORIDA REGISTERED ENGINEERING FIRM BR  
FLORIDA REGISTERED LANDSCAPE ARCHITECTURE FIRM LC-C000219  
© 2017 KIMLEY-HORN AND ASSOCIATES, INC.

PETER T. VAN BUSKIRK  
PROFESSIONAL ENGINEER  
LICENSE NO. 38859  
THIS ITEM HAS BEEN  
ELECTRONICALLY  
AND SEALED BY  
PETER T. VAN BUSKIRK  
P. USING 02/22/2018  
FLORIDA AUTHENTICATION CODE.

**BUTLER PARK  
AQUATIC CENTER  
CITY OF NORTH PORT, FL**

**SITE DETAILS-1**

Scale: AS SHOWN  
Designed by: MCH  
Drawn by: KWS  
Checked by: DP  
Date: DECEMBER 2017  
Project No. 48285014

SHEET  
**C-9**