



CONSULTANT:

SEAL: HENRY D. MONTAGUE, PE 78172

THIS DRAWING SHALL NOT BE USED FOR CONSTRUCTION PURPOSES UNTIL THE SEAL AND SIGNATURE OF THE RESPONSIBLE REGISTRANT APPEARS ON THE DRAWING, AND PROPER PERMIT FORMS AND RELATED FEES ARE TRANSMITTED BY THE OWNER, OWNER'S AGENT OR CONTRACTOR TO THE AUTHORITY HAVING JURISDICTION.

DATE	ISSUED FOR	REV
12/01/2017	PEMB COORDINATION	
01/17/2018	PERMIT SUBMITTAL	

Project Manager B. COLBURN	Drawn T. PATTERSON
Project Leader B. COLBURN	Checked H. MONTAGUE
Date 11/20/2017	Dept Mgr Approval H. MONTAGUE

Client
Palmetto - Spring Hill Forest Rd., LLC.
P.O. BOX 1615
THOMASVILLE, GA 31792
Office: (229) 226-1177
Contact: Jeff Lazenby

Project
DOLLAR GENERAL
US 19 & Pine Forest Dr.
Spring Hill (Hernando County), FL

Drawing Title
PLUMBING PLANS AND SCHEDULE
DO NOT SCALE DRAWING
Project No.
JCDT17.0325.00
Drawing No.
P1

PLUMBING FIXTURE SCHEDULE

MARK	DESCRIPTION
EDF-1	TWO STATION WALL MOUNT ELECTRIC DRINKING FOUNTAIN, BARRIER-FREE ACCESS (ADA), FRONT ONLY EASY TOUCH CONTROL, HIGH UNIT ON RIGHT. ELKAY: WEZTLRDDC OR EQUAL. PROVIDE SUPPLY, STOP VALVE & TRAP. PROVIDE CANE APRON AS REQUIRED.
LAV-1	20"X18" WALL HUNG ADA LAVATORY W/ FRONT OVERFLOW, CONCEALED HANGERS & 4" CENTERS AMERICAN STANDARD LUCERNE #0355 012 OR EQUAL. FAUCET SHALL BE POLISHED CHROME-PLATED CAST BRASS BODY WITH 4" SPOUT, 4" BRASS WRIST BLADE, 0.5 GPM SPRAY AND POP-UP DRAIN, AMERICAN STANDARD MONTERREY #5501 170 WITH #05 AERATOR OR EQUAL. INSULATED EXPOSED DRAIN & WATER PIPES WITH TRUEBRO LAV GUARD KIT #102 E-Z
MS-1	24" X 24" MOLDED STONE MOP SERVICE BASIN, WITH 3" DRAIN, FIAT #MSB-2424 OR EQUAL. PROVIDE SERVICE FAUCET WITH PAIL HOOK & INTEGRAL VACUUM BREAKER, MOP BRACKET, FLAT STAINLESS STEEL STRAINER AND HOSE & BRACKET, FIAT #830 AA, 889 CC, 1453 BB & 832 AA OR EQUAL.
WC-1	FLOOR MOUNTED ADA VITREOUS CHINA ELONGATED 1.6 FLUSH GALLON CLOSE COUPLED TWO PIECE FLOOR SET WATER CLOSET, FLUSH TANK WITH 12" ROUGH-IN, AMERICAN STANDARD CHAMPION 4 RIGHT HEIGHT #002 014 OR EQUAL. PROVIDE OPEN FRONT SEAT, AMERICAN STANDARD #5901.100 OR EQUAL (NOTE: TRIP SHALL BE ON WIDE SIDE OF WATER CLOSET).
EWH-1	1.65 KW 120V/ SINGLE PHASE 10 GALLON WATER HEATER, PROVIDE DRAIN PAN UNDER SHELF MOUNTED WATER HEATER, INSTALL PER MANUFACTURER'S INSTRUCTIONS, PROVIDE FULL SIZE T&P RELIEF VALVE, TERMINATE LINE, TERMINATE FUNNEL DRAIN, TO BE MTD. ON A SHELF OVER RESTROOMS, ABOVE CEILING.
WH-1	FREEZE-PROOF WALL HYDRANT WITH BRONZE BODY & ANTI-SIPHON VACUUM BREAKER, BOX AND LOCKING COVER, ZURN: #Z1320C ECOLOTROL WALL HYDRANT, PROVIDE WITH HOSE CONNECTION AND MOUNT AT 24" ABOVE GRADE. FLUSH MOUNTED TAMPER RESISTANT.
TP-1	AUTOMATIC TRAP PRIMER
ECO-1	2-WAY EXTERIOR CLEAN OUT, TYLER PIPE #003519 OR EQUAL TRAFFIC PIPED
WCO-1	WALL CLEAN OUT, SIZE & INSTALL AS SHOWN ON PLANS, JOSAN TURN, OR EQUAL
FCO-1	FLOOR CLEAN OUT, SIZE & INSTALL AS SHOWN ON PLANS, JOSAN TURN, OR EQUAL

STORM DRAINAGE CALCULATIONS

LOCATION: 100% RAINFALL, FL
100-YEAR HOURLY RAINFALL RATE = 5"
SIZES BASED ON 2015 FLORIDA PLUMBING CODE
TO HORIZONTALLY PROJECTED ROOF AREA:
9200 SQ. FT. HORIZONTAL
+ 21000 SQ. FT. VERTICAL
= 9783 SQ. FT.
9800 SQ. FT. DOWNSPOUTS = 1640 SQ. FT. PER DOWNSPOUT
REQUIRED VERTICAL CONDUCTOR SIZE = 2-3/4" x 4-1/4"
PROPOSED VERTICAL CONDUCTOR SIZE = 4" x 6"

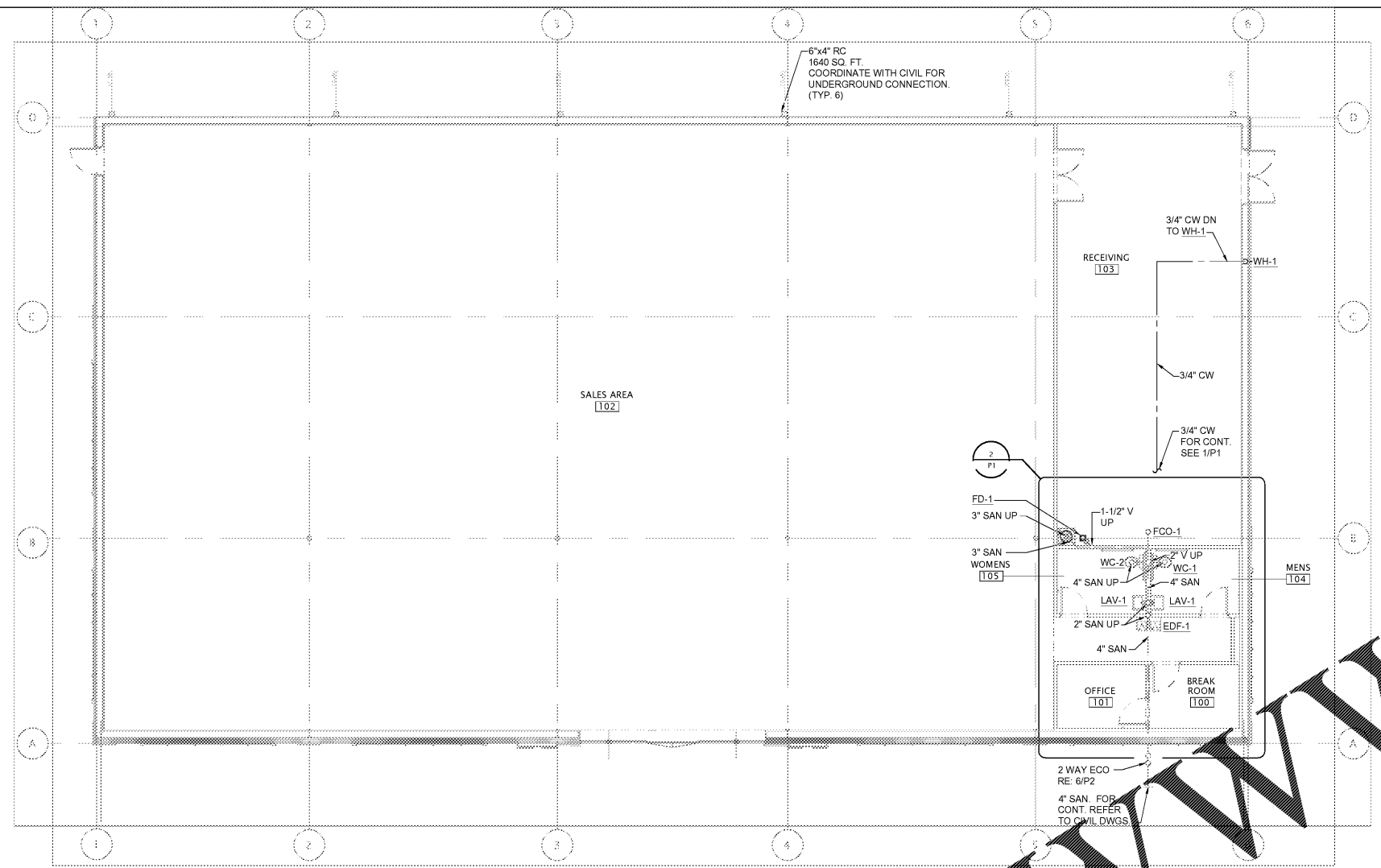
GENERAL NOTES

- PUBLIC SANITARY SEWER CONNECTION IS REQUIRED.
- SEPTIC SYSTEM NOT ALLOWED WITHOUT WRITTEN APPROVAL OF DOLLAR GENERAL STORE DESIGN.
- HOLDING TANK SYSTEMS ARE NOT ALLOWED.
- LIFT STATIONS ARE NOT ALLOWED WITHOUT DOLLAR GENERAL APPROVAL.
- CONTRACTOR RESPONSIBLE FOR ALL PUBLIC UTILITY CONNECTIONS (GAS, WATER, ELECTRIC, SEPTIC) AS WELL AS INFRASTRUCTURE REQUIRED BY UTILITY COMPANY.
- COORDINATE CLEANOUT LOCATION WITH FIXTURE LAYOUT.

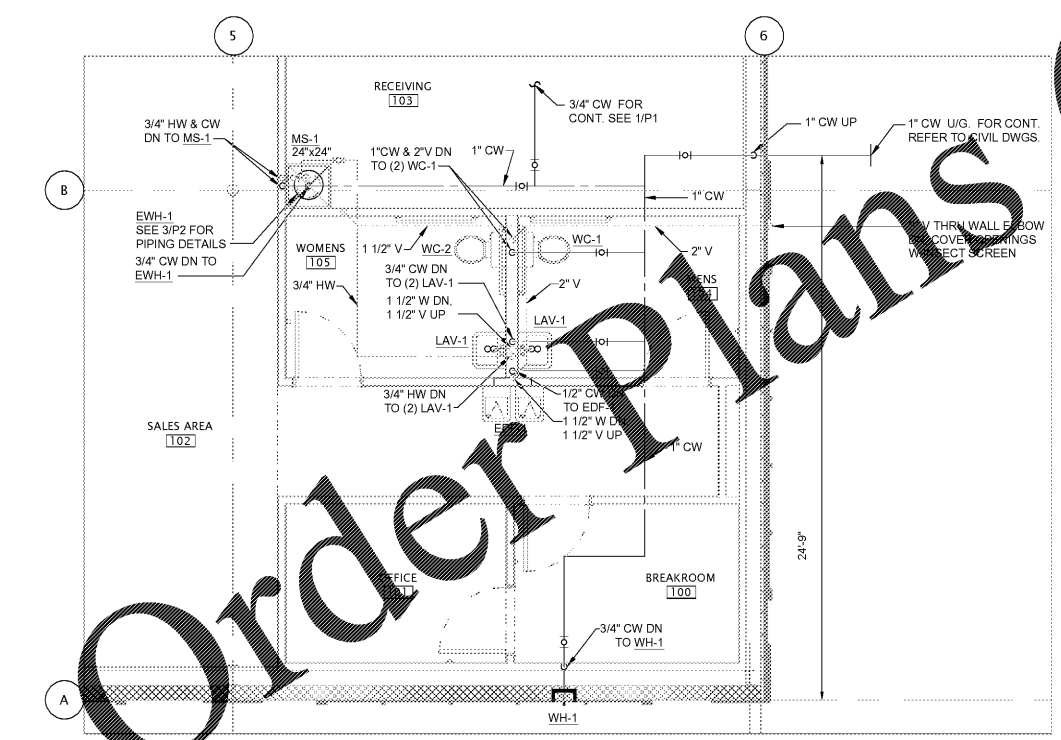
LEGEND

SS	SANITARY SEWER
---	DOMESTIC COLD WATER
----	DOMESTIC HOT WATER
SD	CONDENSATE DRAIN
---	PLUMBING VENT
	UNION
>	PLUG COCK
G	ELBOW - TURNED DOWN
O	ELBOW - TURNED UP
∩	TEE - TURNED DOWN
∪	TEE - TURNED UP
⊥	GATE VALVE
HOIHOI	RPBP
IOI	BALL VALVE
Z	CHECK VALVE
⊥	SHUT-OFF VALVE IN VERTICAL LINE
⊥	T & P RELIEF VALVE
○ FCO	FLOOR CLEANOUT
○ GCO	GROUND CLEANOUT
○ HB	HOSE BIBB/WALL HYDRANT
○ WCO	WALL CLEANOUT

FD	FLOOR DRAIN	HW	HOT WATER
DN	DOWN	CW	COLD WATER
VTR	VENT THRU ROOF	CONT.	CONTINUATION
U/F	UNDER FLOOR	I.E.	INVERT
SS	SANITARY SEWER	ELEVATION	
V	PLUMBING VENT	CONDENSATE	
RPBP	REDUCED PRESSURE BACKFLOW PREVENTER	DRAIN	



1 PLUMBING PLAN



2 ENLARGED RESTROOM PLAN

Order Plans @ www.dollargeneral.com